

Antrim and Newtownabbey Borough Council

Council Area Profile

**September 2019**

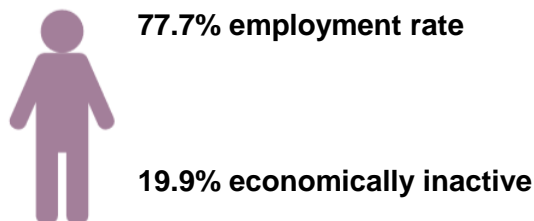
## GVA

GVA in Antrim & Newtownabbey in 2017 was £2.6bn. This represented 6.5% of the NI total.<sup>1</sup>

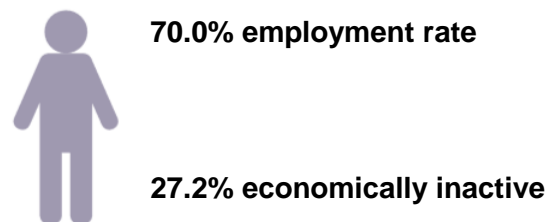
## Labour Market Structure

In 2018, the employment rate for NI was 70.0%, the economic inactivity rate was 27.2%. Antrim & Newtownabbey reported the highest employment rate (77.7%) and the lowest inactivity rate (19.9%) amongst all the Local Government Districts (LGDs).

### Antrim and Newtownabbey

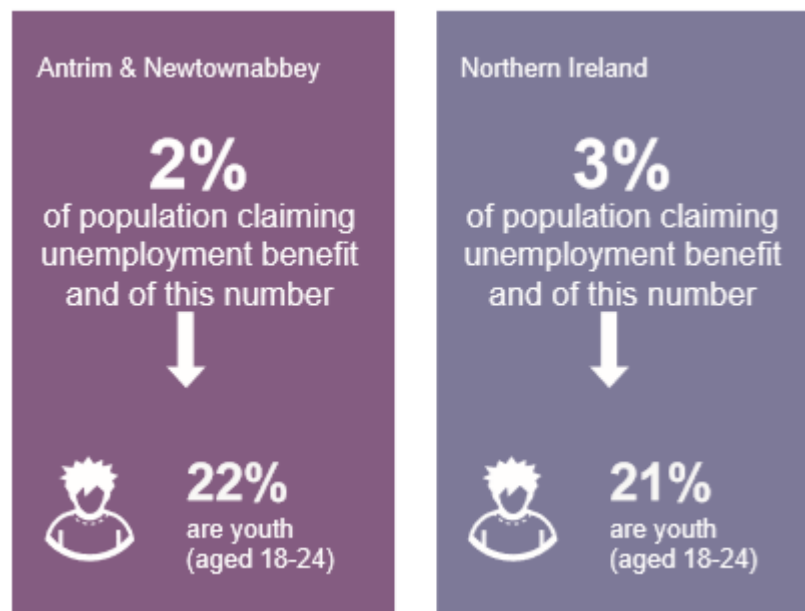


### Northern Ireland



In 2017 Antrim & Newtownabbey had a self-employment rate of 16% which was equal to the NI average of 16%.<sup>2</sup>

In 2018, 2% of the population in Antrim & Newtownabbey were claiming unemployment benefit which was one percentage point below the rate for NI. 22% of those in receipt of claiming benefits were young people (aged 18-24).<sup>3</sup>



<sup>1</sup> Office for National Statistics (ONS)

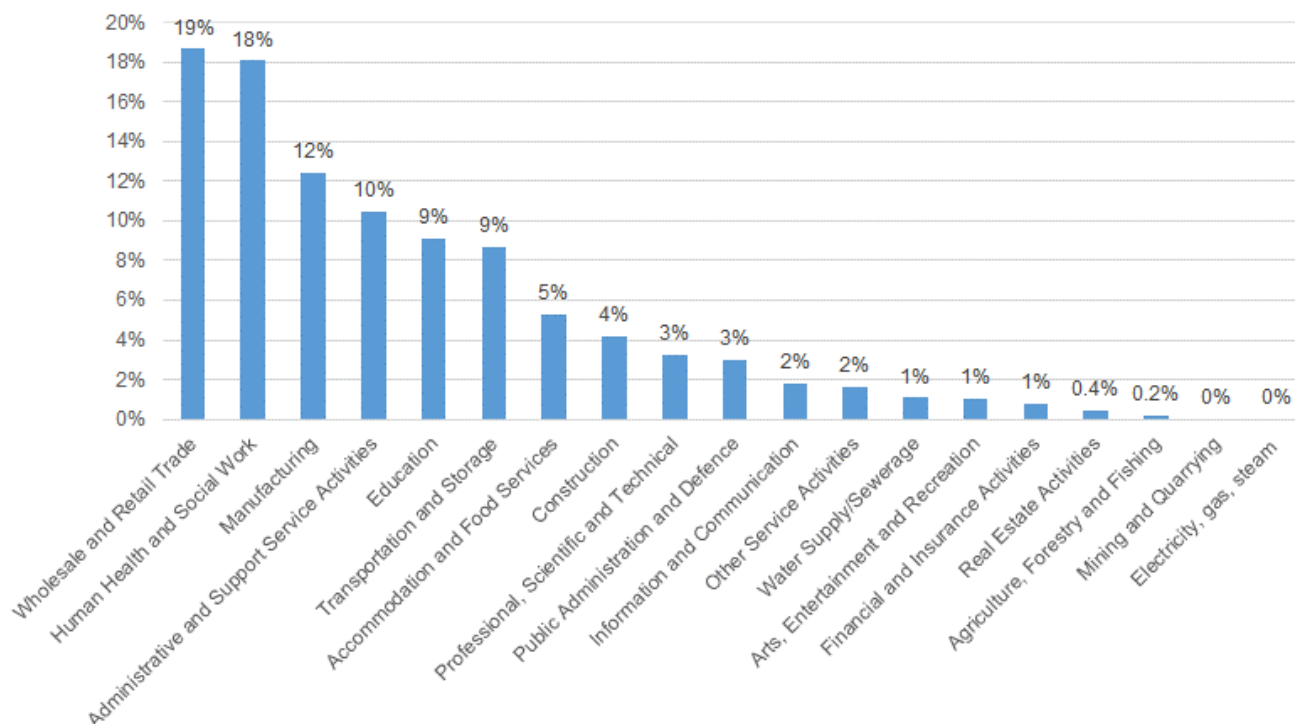
<sup>2</sup> Labour Force Survey, January-December 2018

<sup>3</sup> Claimant Count, NISRA

## Employee Jobs

In 2018, there were 59,129 jobs within Antrim & Newtownabbey representing 8% of the NI total. Wholesale and Retail is Antrim & Newtownabbey's largest sector (19%) followed by Human Health and Social Work (18%) and Manufacturing (12%)<sup>4</sup>.

**Figure 1: Employee Jobs by Industry, 2017**



The private sector accounted for 77% of all employee jobs in Antrim & Newtownabbey in 2018 compared to the NI average of 73%.<sup>5</sup>

**Table 1: Public / Private Sector, 2018**

District Council	Totals	Public Sector %	Private Sector %
Antrim & Newtownabbey	59,129	23%	77%
<b>Total</b>	<b>759,358</b>	<b>27%</b>	<b>73%</b>

<sup>4</sup> Industry statistics refer to 2017 data. Data for employee jobs by industry is published every 2 years.

<sup>5</sup> NI Business Register and Employment Survey

## Redundancies

In 2018 there were 2,498 redundancies across NI. A total of 413 redundancies were in Antrim & Newtownabbey representing 17% of the NI total.<sup>6</sup>

## Earnings

In 2018 annual median earnings by place of residence (£23,062) and by place of work (£22,516) for Antrim & Newtownabbey were higher than the median annual earnings figure for NI (£21,923).<sup>7</sup>



## Agriculture<sup>8</sup>

In total there are 872 farms in Antrim and Newtownabbey which represents 4% of total NI farms. The majority of farm businesses in Antrim and Newtownabbey are classified as very small (70%).

**Table 2: Number of farms by farm business size<sup>9</sup> and by District council in Northern Ireland, June 2018**

District Council	Average SO/farm	Number of farms					Total
	(€ '000)	V. Small	Small	Medium	Large		
Antrim and Newtownabbey	96.8	612	125	42	93	872	
<b>NI Total</b>	<b>77.6</b>	<b>19,188</b>	<b>2,824</b>	<b>1,190</b>	<b>1,693</b>	<b>24,895</b>	

<sup>6</sup> NISRA, Council Area Statistics

<sup>7</sup> Annual Survey of Hours and Earnings, NISRA

<sup>8</sup> DAERA June Agricultural Census, June 2018

<sup>9</sup> Note: Farm business size classification is calculated from Standard Labour Requirements (SLR). The total SLR for each farm is calculated by multiplying its crop areas and livestock numbers by the appropriate SLR coefficients and then summing the results for all enterprises on the farm. A standard labour unit is equivalent to 1,900 hours of work per year.

Cattle and Sheep farms constitute 76% of farms in Antrim and Newtownabbey.

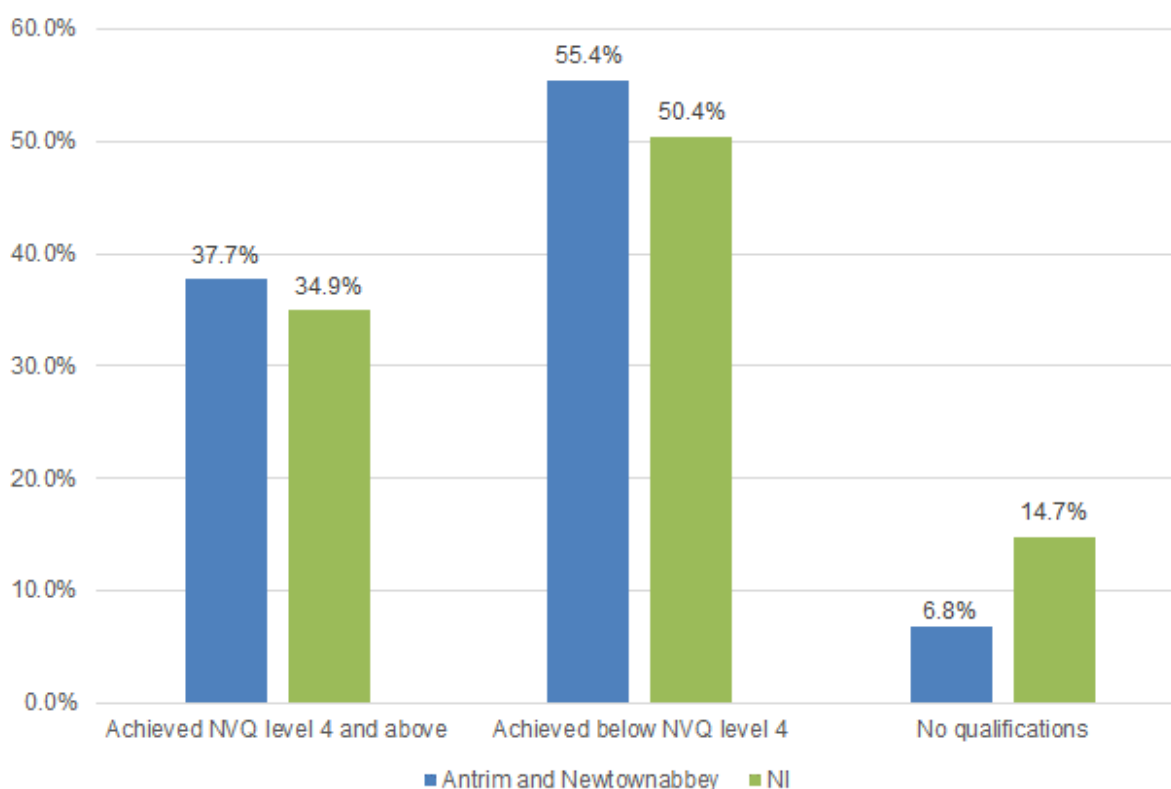
**Table 3: Top 3 farm types by number of farms by District Council in Northern Ireland, June 2018**

District Council	General cropping	Dairy	Cattle & Sheep		Total number of farms
			LFA <sup>10</sup>	lowland	
Antrim and Newtownabbey	23	106	370	297	872
<b>Councils Total</b>	<b>574</b>	<b>2,545</b>	<b>14,700</b>	<b>5,109</b>	<b>24,895</b>

## Qualifications

In 2018, Antrim & Newtownabbey had a higher than the NI average and was the fourth highest LGD in terms of 16-64 year olds achieving NVQ level 4 and above<sup>11</sup> (37.7%). Antrim & Newtownabbey had one of the lowest rates of 16-64 year olds with no qualifications (6.8%).<sup>12</sup>

**Figure 2: Qualifications based on working age population (16-64), 2018**



<sup>10</sup> Less Favoured Area

<sup>11</sup> This relates to those at degree level and above which includes foundation degrees, higher degrees, teaching and nursing degrees.

<sup>12</sup> NISRA, [Labour Force Survey 2018](#)

## Cross Border Movements

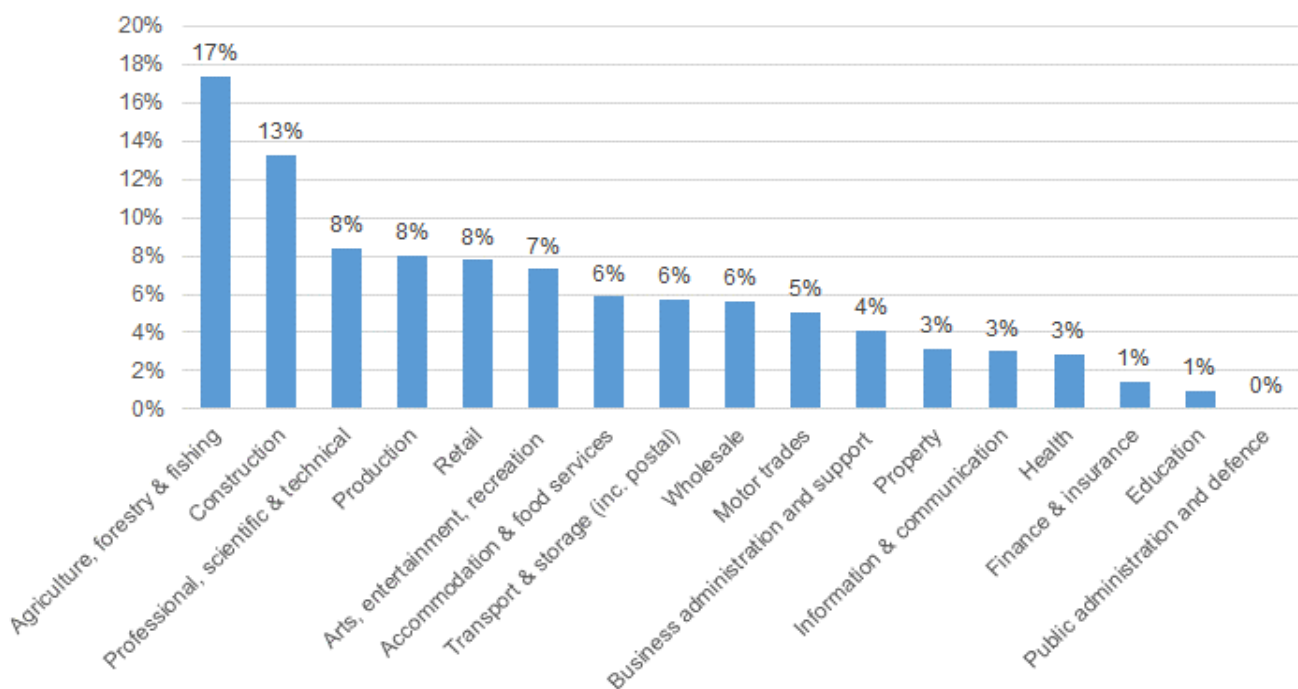
Analysis of Mobile Network Operator (MNO) information<sup>13</sup> indicates that approximately 1% of cross border trips from NI to ROI by NI residents started in Antrim and Newtownabbey Borough Council, with less than 1% of trips from ROI to NI by ROI residents ending in the borough.

On average residents made less than 1 cross border trip per fortnight. 23% of cross border travel was for work purposes and 77% was for social/leisure purposes.

## Business Profile

In 2019 there were 4,175 businesses located within Antrim & Newtownabbey representing 6% of the NI population. The vast majority (86%) are classified as micro (0-9 employees). The top 3 sectors in Antrim & Newtownabbey are: Agriculture, forestry and fishing (17%), Construction (13%) and Professional, scientific & technical (8%).<sup>14</sup>

**Figure 3: Number of VAT and/or PAYE Registered Businesses Operating in Antrim & Newtownabbey by Broad Industry Group, 2019**



## Foreign Direct Investment (FDI)

According to Invest NI's Antrim & Newtownabbey Council Briefing<sup>15</sup>, over the period 2014/15 to 2018/19, 14 externally owned businesses were offered support that contributed towards investment commitments of £79m and assisted 168 jobs in the area.

<sup>13</sup> DfE (2018) [Cross Border Movements: The movement of people across the NI-Rol border](#)

<sup>14</sup> NISRA, Inter-Departmental Business Register

<sup>15</sup> <https://secure.investni.com/static/library/invest-ni/documents/investni-support-council-area-antrim-and-newtownabbey-2019.pdf>

## **Web-links to useful data sources**

[Labour Force Survey](#)

[Claimant Count](#)

[Regional analysis and trends](#)

[Quarterly Employment Survey](#)

[Business Register and Employment Survey](#)

[Annual Business Inquiry](#)

[Redundancies](#)

[Annual Survey of Hours and Earnings](#)

[Regional Gross Value Added \(Balanced\)](#)

[NI Composite Economic Index](#)

[Broad Economy Sales and Exports Statistics](#)

[Inter Departmental Business Register](#)

[Agricultural Census 2018](#)

[Local Government Tourism Statistics](#)

[Invest NI Regional Profiles](#)

- [Eastern](#)
- [North Eastern](#)
- [North Western](#)
- [Southern](#)
- [Western](#)

[Northern Ireland Life and Times Survey 2018](#)

[Northern Ireland Trade and Investment Under 'No Deal'](#)

[The movement of people across the Northern Ireland - Republic of Ireland border](#)

[An analysis of migrant workers from the NI census](#)