

Lisburn and Castlereagh City Council

Council Area Profile

**September 2019**

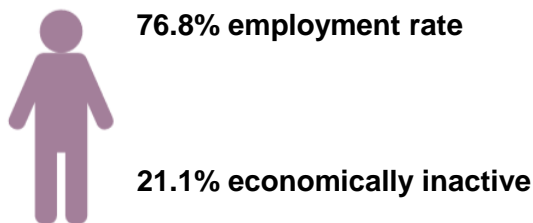
## GVA

GVA in Lisburn & Castlereagh in 2017 was £2.4bn. This represented 6% of the NI total.<sup>1</sup>

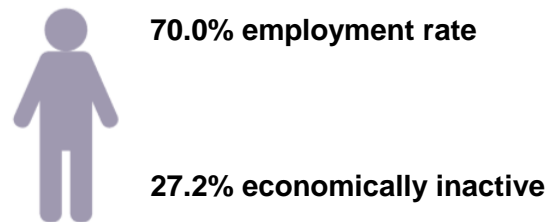
## Labour Market Structure

In 2018, the employment rate for NI was 70.0% and the economic inactivity rate was 27.2%. Lisburn & Castlereagh had one of the highest employment rates at 76.8% and one of the lowest inactivity rates at 21.1% across all council areas.

### Lisburn & Castlereagh

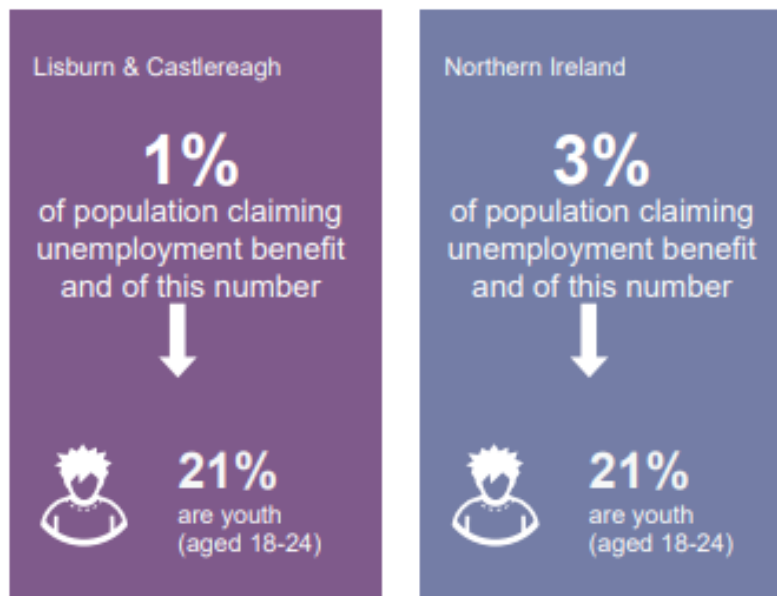


### Northern Ireland



In 2017 Lisburn & Castlereagh had a self-employment rate of 14% which was lower than the NI average of 16%.<sup>2</sup>

In 2018 Lisburn & Castlereagh had the lowest proportion of the population claiming unemployment benefits at 1%. Approximately one-fifth of those in receipt of claiming benefits were young people (aged 18-24).<sup>3</sup>



<sup>1</sup> Office for National Statistics (ONS)

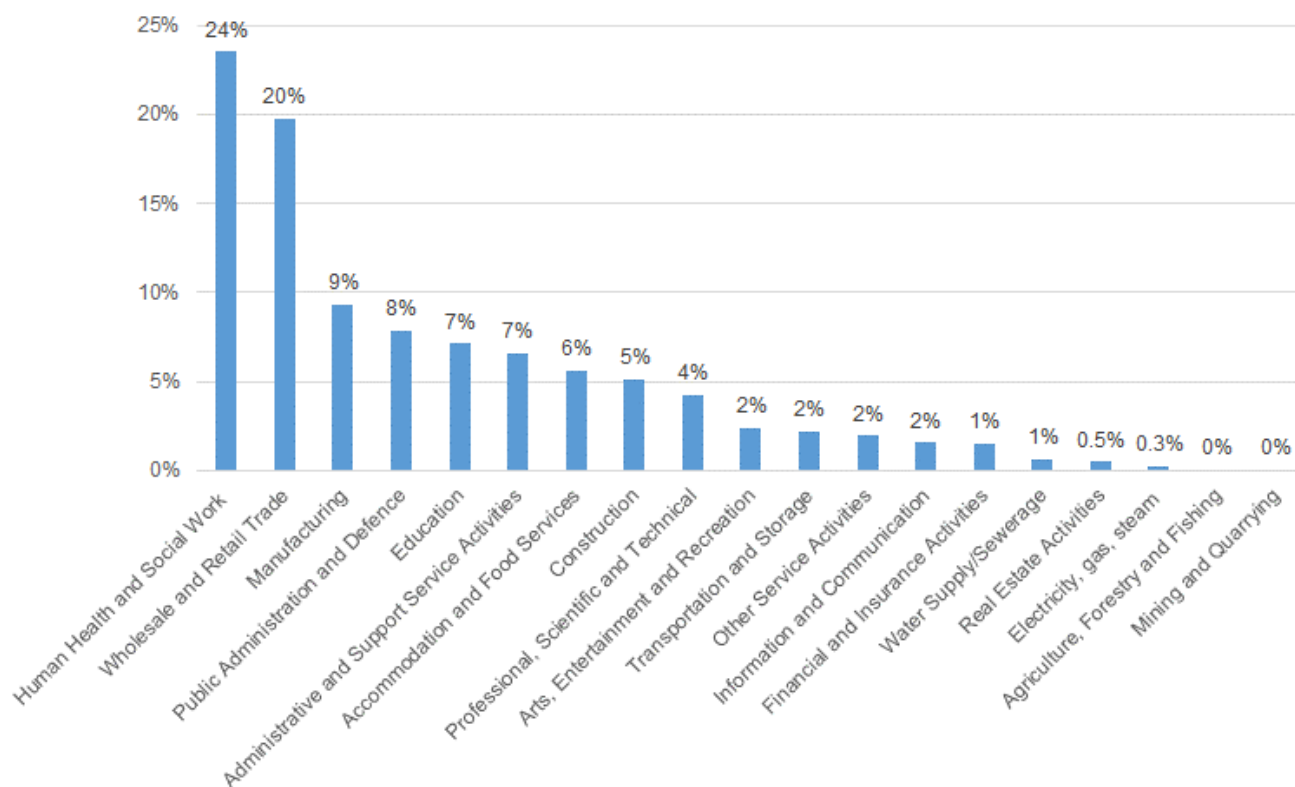
<sup>2</sup> Labour Force Survey, January-December 2018

<sup>3</sup> Claimant Count, NISRA

## Employee Jobs

In 2018, there were 57,888 jobs within Lisburn & Castlereagh representing 8% of the NI total. Human Health and Social work activities is Lisburn & Castlereagh's largest sector (24%) followed by Wholesale and Retail (20%).<sup>4</sup>

**Figure 1: Employee Jobs by Industry, 2017**



The private sector accounted for 68% of all employee jobs in Lisburn & Castlereagh in 2018 compared to the NI average of 73%.<sup>5</sup>

**Table 1: Public / Private Sector, 2018**

District Council	Totals	Public Sector %	Private Sector %
Lisburn and Castlereagh	57,888	32%	68%
<b>Total</b>	<b>759,358</b>	<b>27%</b>	<b>73%</b>

<sup>4</sup> Industry statistics refer to 2017 data. Data for employee jobs by industry is published every 2 years.

<sup>5</sup> NI Business Register and Employment Survey

## Redundancies

In 2018 there were 2,498 redundancies across NI. A total of 129 redundancies were in Lisburn & Castlereagh representing 5% of the NI total.<sup>6</sup>

## Earnings

In 2018 Lisburn & Castlereagh had the highest annual median earnings by place of residence at £24,934 and the second highest median earnings by place of work at £23,109, both above the NI average of £21,923.<sup>7</sup>



## Agriculture<sup>8</sup>

In total there are 842 farms in Lisburn and Castlereagh which represents 3% of total NI farms. Of those, the majority of farm businesses in Lisburn & Castlereagh are classified as very small (73%).

**Table 2: Number of farms by farm business size<sup>9</sup> and by District Council in Northern Ireland, June 2018**

District Council	Average SO/farm (€ '000)	Number of farms					Total
		V. Small	Small	Medium	Large		
Lisburn and Castlereagh	93.4	615	90	51	86	842	
<b>NI Total</b>	<b>77.6</b>	<b>19,188</b>	<b>2,824</b>	<b>1,190</b>	<b>1,693</b>	<b>24,895</b>	

<sup>6</sup> NISRA, Council Area Statistics

<sup>7</sup> Annual Survey of Hours and Earnings, NISRA

<sup>8</sup> DAERA June Agricultural Census, June 2018

<sup>9</sup> Note: Farm business size classification is calculated from Standard Labour Requirements (SLR). The total SLR for each farm is calculated by multiplying its crop areas and livestock numbers by the appropriate SLR coefficients and then summing the results for all enterprises on the farm. A standard labour unit is equivalent to 1,900 hours of work per year.

Cattle and Sheep farms constitute 69% of farms in Lisburn & Castlereagh.

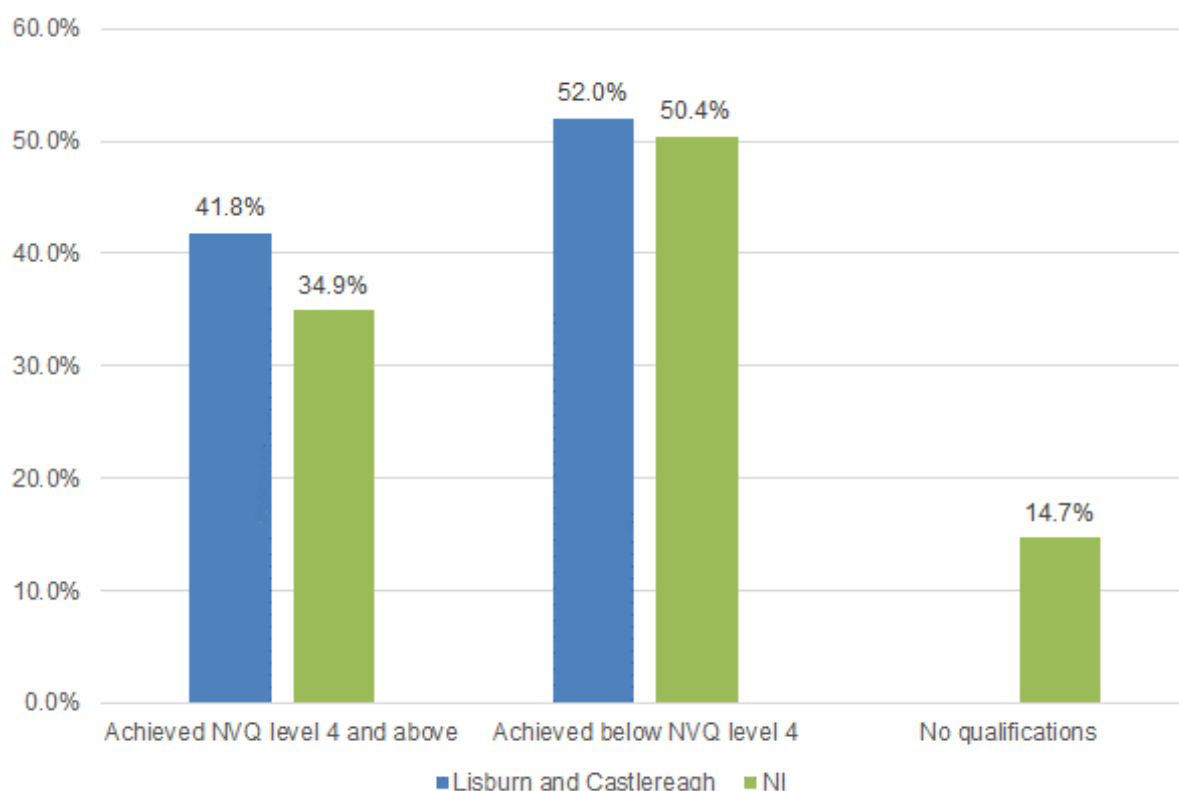
**Table 3: Top 3 farm types by number of farms by District council in Northern Ireland, June 2018**

District Council	General cropping	Dairy	Cattle & Sheep		Total number of farms
			LFA <sup>10</sup>	Lowland	
Lisburn and Castlereagh	34	100	231	347	842
<b>NI Total</b>	<b>574</b>	<b>2,545</b>	<b>14,700</b>	<b>5,109</b>	<b>24,895</b>

## Qualifications

Lisburn & Castlereagh was the highest LGD in terms of NVQ level 4 and above<sup>11</sup> at 41.8% within the working age population which was well above the NI average of 34.9%.<sup>12 13</sup>

**Figure 2: Qualifications based on working age population (16-64), 2018**



<sup>10</sup> Less Favoured Area

<sup>11</sup> This relates to those at degree level and above which includes foundation degrees, higher degrees, teaching and nursing degrees.

<sup>12</sup> NISRA, [Labour Force Survey 2018](#)

<sup>13</sup> No figure available for 'no qualifications' as the sample size was too small for a reliable estimate.

## Cross Border Movements

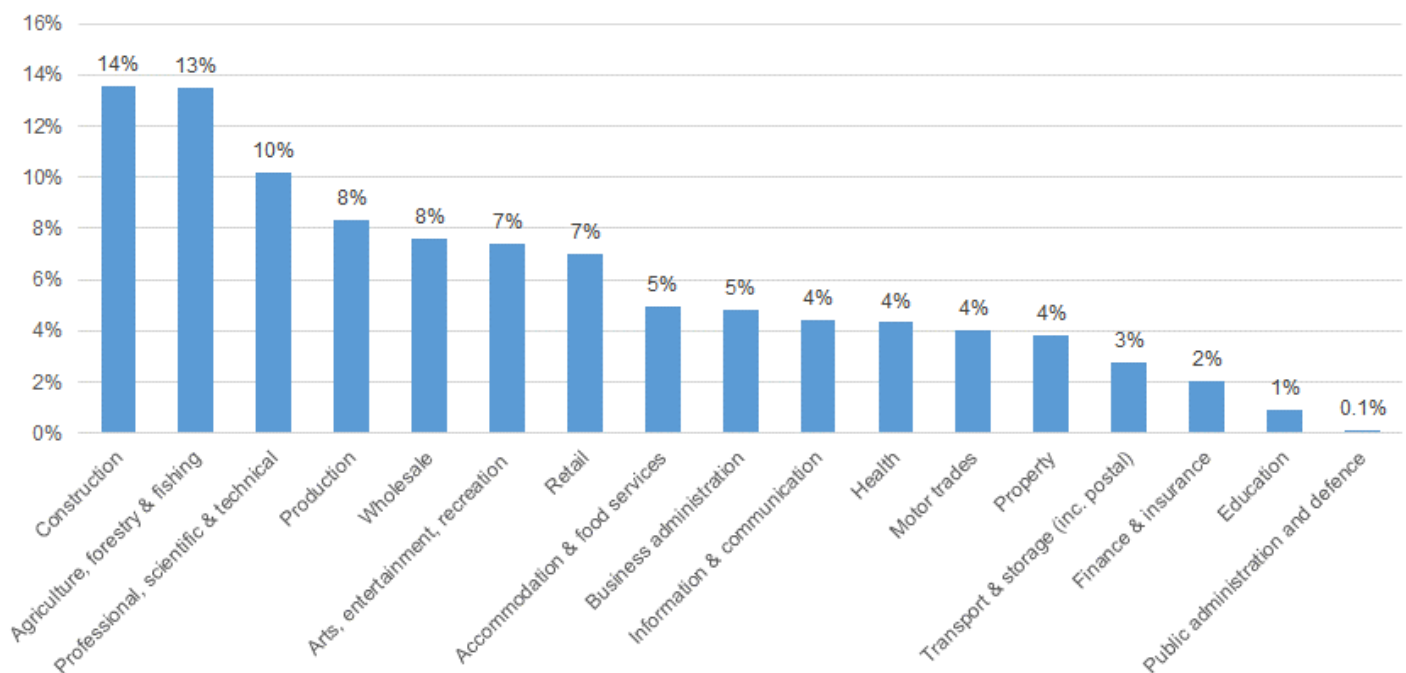
Analysis of Mobile Network Operator (MNO) information<sup>14</sup> indicates that approximately 1% of border crossings from NI to ROI by NI residents started in Lisburn and Castlereagh City Council. Around 1% of trips to NI from ROI by ROI residents ended in Lisburn and Castlereagh.

On average residents made around 1 cross border trip per month. 27% of cross border travel was for work purposes and 73% was for social/leisure purposes.

## Business Profile

In 2019 there were 4,855 businesses located within Lisburn & Castlereagh representing 6% of the NI population. The vast majority (87%) are classified as micro (0-9 employees). The top 3 sectors in Lisburn & Castlereagh are: Construction (14%), Agriculture, forestry & fishing (13%) and Professional, scientific & technical (10%).<sup>15</sup>

**Figure 3: Number of VAT and/or PAYE Registered Businesses Operating in Lisburn & Castlereagh by Broad Industry Group, 2019**



## Foreign Direct Investment (FDI)

According to Invest NI's Lisburn & Castlereagh Council Briefing<sup>16</sup>, over the period 2014/15 to 2018/19, 30 externally owned businesses were offered support that contributed towards investment commitments of £30m and assisted 274 jobs in the area.

<sup>14</sup> DfE (2018) [Cross Border Movements: The movement of people across the NI-Rol border](#)

<sup>15</sup> NISRA, Inter-Departmental Business Register

<sup>16</sup> <https://secure.investni.com/static/library/invest-ni/documents/investni-support-council-area-lisburn-and-castlereagh-2019.pdf>

## **Web-links to useful data sources**

[Labour Force Survey](#)

[Claimant Count](#)

[Regional analysis and trends](#)

[Quarterly Employment Survey](#)

[Business Register and Employment Survey](#)

[Annual Business Inquiry](#)

[Redundancies](#)

[Annual Survey of Hours and Earnings](#)

[Regional Gross Value Added \(Balanced\)](#)

[NI Composite Economic Index](#)

[Broad Economy Sales and Exports Statistics](#)

[Inter Departmental Business Register](#)

[Agricultural Census 2018](#)

[Local Government Tourism Statistics](#)

[Invest NI Regional Profiles](#)

- [Eastern](#)
- [North Eastern](#)
- [North Western](#)
- [Southern](#)
- [Western](#)

[Northern Ireland Life and Times Survey 2018](#)

[Northern Ireland Trade and Investment Under 'No Deal'](#)

[The movement of people across the Northern Ireland - Republic of Ireland border](#)

[An analysis of migrant workers from the NI census](#)