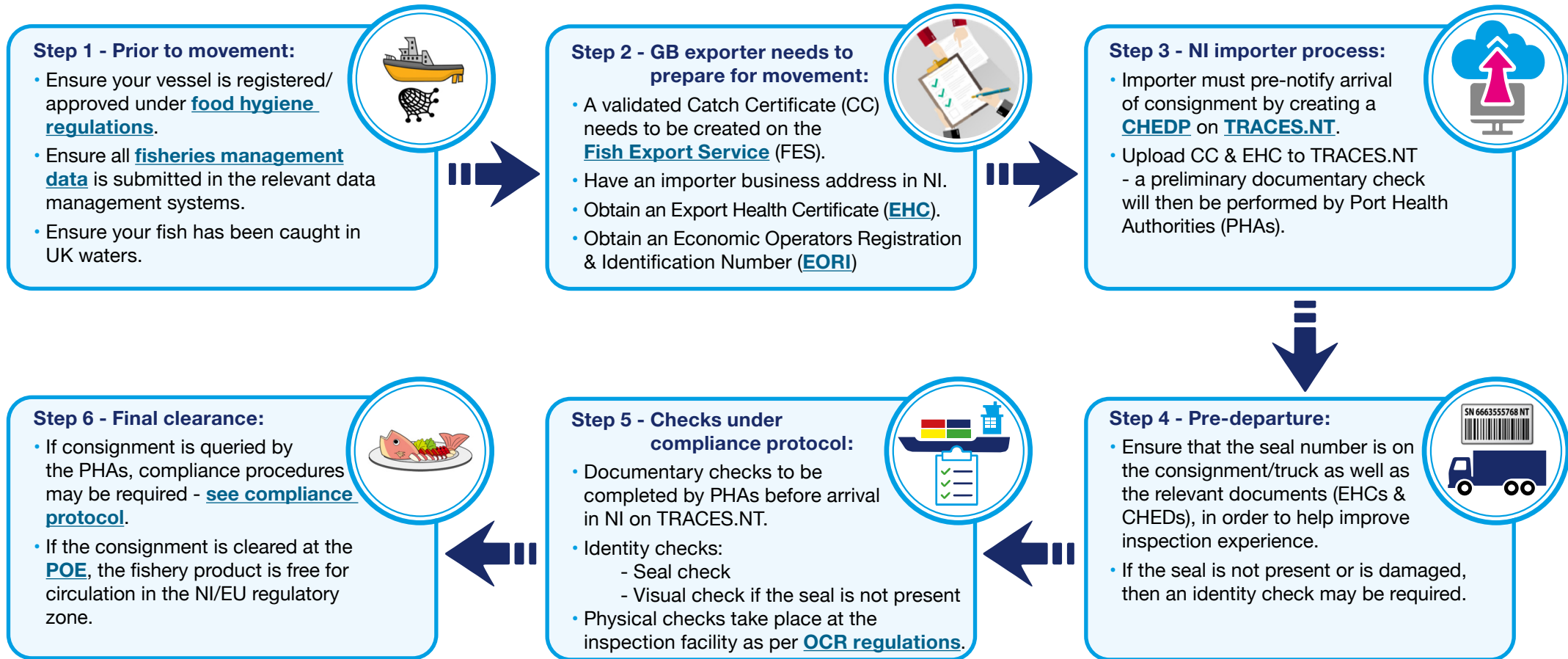


# Key steps required to move UK caught fish through Northern Ireland Points of Entry (POEs)



For further information on the requirements for Products of Animal Origin (POAO) Fish and Fishery products for human consumption - Movements in and out of Northern Ireland - please visit our DAERA Fisheries Webpage at this [link](#)

*Sustainability at the heart of a living, working, active landscape valued by everyone.*



Department of  
**Agriculture, Environment  
and Rural Affairs**

[www.daera-ni.gov.uk](http://www.daera-ni.gov.uk)



**INVESTORS  
IN PEOPLE**