

INFORMATION
ANALYSIS
DIRECTORATE



Northern Ireland Waiting Time Statistics: Inpatient and Day Case Waiting Times Quarter Ending March 2018

Reader Information

Purpose: This statistical release presents information on waiting times for admission for either inpatient or day case treatment in Northern Ireland and reports on the performance of the Health and Social Care (HSC) Trusts against the 2017/18 Ministerial waiting time target which states that:

“By March 2018, 55% of patients should wait no longer than 13 weeks for inpatient/day case treatment, with no patient waiting longer than 52 weeks.”

This statistical release details information on the number of patients waiting, and length of time waiting, for inpatient and day case admissions in HSC Trusts at 31st March 2018. Data are presented by HSC Trust, specialty and time band. It also includes inpatient and day case activity commissioned by the Health Service during the quarter ending March 2018.

Statistical Quality: The ‘*Inpatient and Day Case Waiting Times Publication – Supporting Documentation*’ booklet details the technical guidance and definitions used, as well as notes on how to use the data contained within this statistical release. This booklet is available to view or download from:

<https://www.health-ni.gov.uk/publications/northern-ireland-waiting-time-statistics-inpatient-waiting-times-march-2018>

Internet: <https://www.health-ni.gov.uk/articles/inpatient-waiting-times>

Authors: Jennifer Finlay, Jennifer McCrea, Siobhán Morgan

Publication Date: Thursday 31st March 2018

Reporting Period: 1st January 2018 – 31st March 2018

Issued by: Hospital Information Branch
Information & Analysis Directorate
Department of Health
Stormont Estate, Belfast, BT4 3SQ

Contact Information and further copies: statistics@health-ni.gov.uk

Target audience: Department of Health (DoH), Chief Executives of the HSC Board and Trusts in Northern Ireland, health care professionals, Health & Social Care stakeholders, academics, the media and the general public.

Price: Free

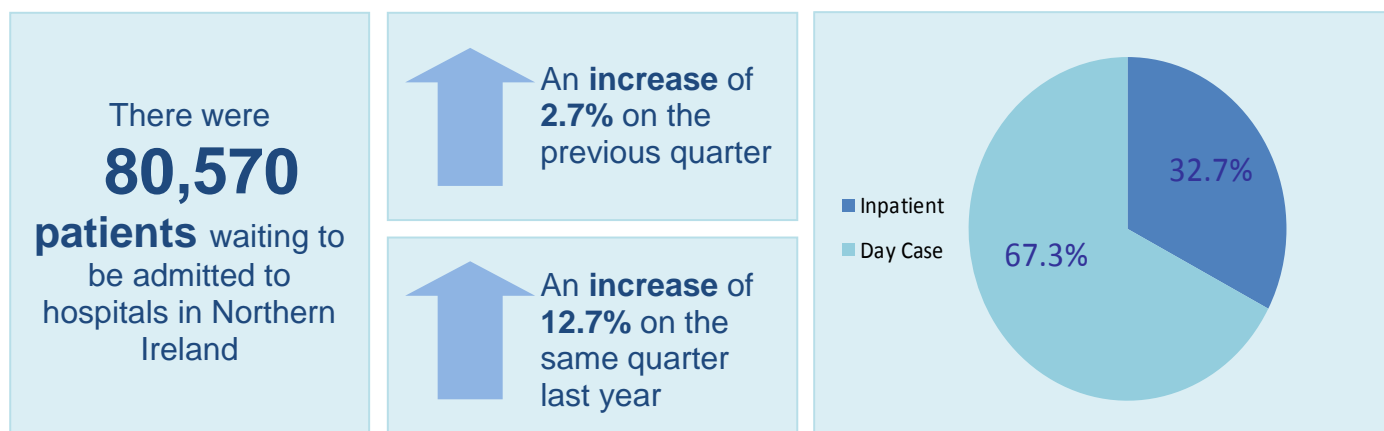
Copyright: This publication is Crown copyright and may be reproduced free of charge in any format or medium. Any material used must be acknowledged, and the title of the publication specified.

Contents

Total number of patients waiting for Inpatient and Day Case Admissions	4
Patients waiting longer than 13 weeks for Inpatient and Day Case Admissions.....	5
Patients waiting longer than 52 weeks for Inpatient and Day Case Admissions.....	6
Completed waits for Inpatient and Day Case Activity commissioned by the Health Service...	7
Appendix 1: Tables.....	8
Appendix 2: Explanatory Notes.....	11

By March 2018, 55% of patients should wait no longer than 13 weeks for inpatient/day case treatment, with no patient waiting longer than 52 weeks.

Total number of patients waiting at 31st March 2018



Source: DoH Inpatient Waiting Times Dataset

At 31st March 2018, a total of 80,570 patients were waiting to be admitted to hospitals in Northern Ireland, 2.7% (2,130) more than at 31st December 2017 (78,440), and 12.7% (9,087) more than at 31st March 2017 (71,483) (Table 1).

Almost one third (32.7%, 26,339) of those waiting for admission at 31st March 2018 were waiting for an inpatient admission, with the remaining 67.3% (54,231) waiting for a day case admission (Table 1).



Source: DoH Inpatient Waiting Times Dataset

A number of inpatient and day case services may not be provided at a patient's local HSC Trust, and instead are provided at a single regional centre for Northern Ireland. As patients are reported against the HSC Trust responsible for the service that will be providing treatment, users should be cautious in how they use these data (see explanatory note 11).

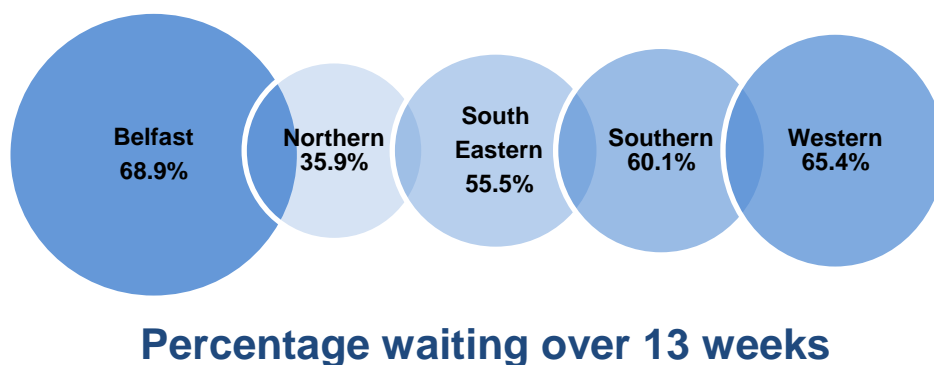
Over two fifths (43.5%) were waiting to be admitted in the Belfast HSC Trust, with a further 20.6% waiting in the Western HSC Trust, 14.8% in the Southern HSC Trust, 12.5% in the South Eastern HSC Trust and 8.6% in the Northern HSC Trust (Table 2a).

Over three quarters (79.8%, 64,257) of the 80,570 patients were waiting for admission in one of the following specialties: General Surgery (15,764); Trauma and Orthopaedic (T&O) Surgery (15,261); Ophthalmology (8,701); Ear, Nose and Throat (ENT) (7,909); Urology (7,526); Gynaecology (5,208) and Gastroenterology (3,888) (Table 3a).

Patients waiting more than 13 weeks at 31st March 2018

This element was **not achieved** by Northern Ireland as a whole

62.3%
of patients were waiting longer than 13 weeks



Percentage waiting over 13 weeks

Source: DoH Inpatient Waiting Times Dataset

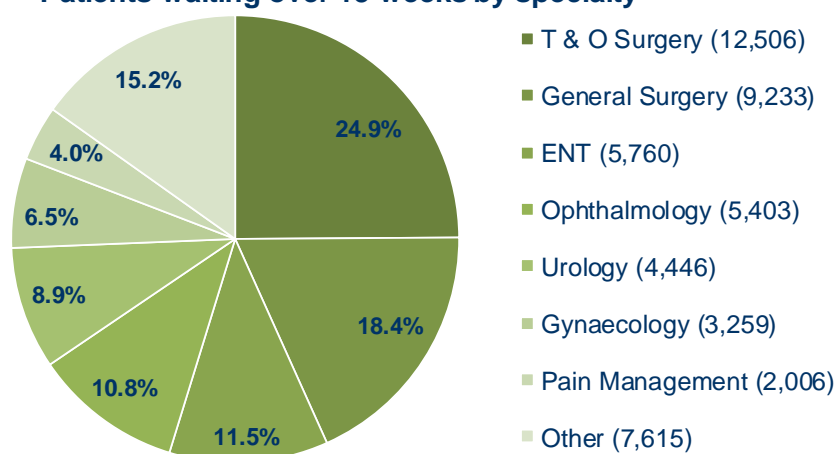
Achievement of the 13 week target requires that less than 45% of patients should be waiting over 13 weeks for inpatient or day case admission.

At 31st March 2018, 62.3% (50,228) of patients were waiting more than 13 weeks to be admitted for treatment, compared with 61.2% (48,003) at 31st December 2017 and 56.0% (40,037) at 31st March 2017 (Table 1).

At 31st March 2018, the 13 week element of the target was not achieved by Northern Ireland as a whole (Table 2a). The Northern HSC Trust did meet this element of the target, however, data users should be aware that many inpatient and day case services are not provided at every HSC Trust (see explanatory note 11).

Over three quarters (77.1%, 20,307) of patients waiting for an inpatient admission, were waiting over 13 weeks. This is compared with 55.2% (29,921) waiting over 13 weeks for a day case admission (Table 1).

Patients waiting over 13 weeks by specialty



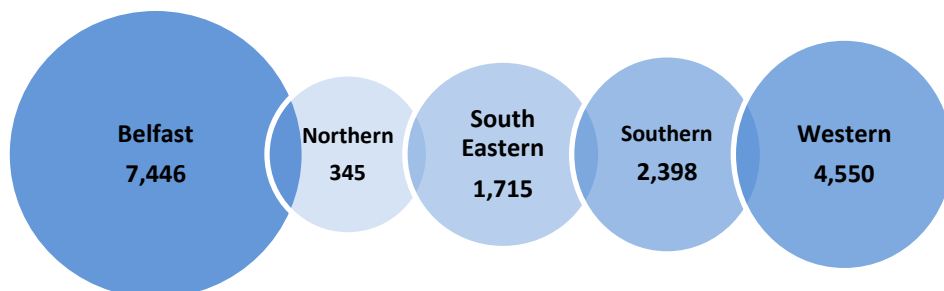
Just over four fifths (84.8%, 42,613) of the 50,228 patients waiting more than 13 weeks at 31st March 2018 were in one of the following specialties: Trauma and Orthopaedic (T&O) Surgery; General Surgery; Ear, Nose and Throat (ENT); Ophthalmology; Urology; Gynaecology; and Pain Management (Table 3a).

Source: DoH Inpatient Waiting Times Dataset

Patients waiting more than 52 weeks at 31st March 2018

This element was **not achieved** by Northern Ireland as a whole

16,454
patients were waiting longer than 52 weeks



Number waiting over 52 weeks

Source: DoH Inpatient Waiting Times Dataset

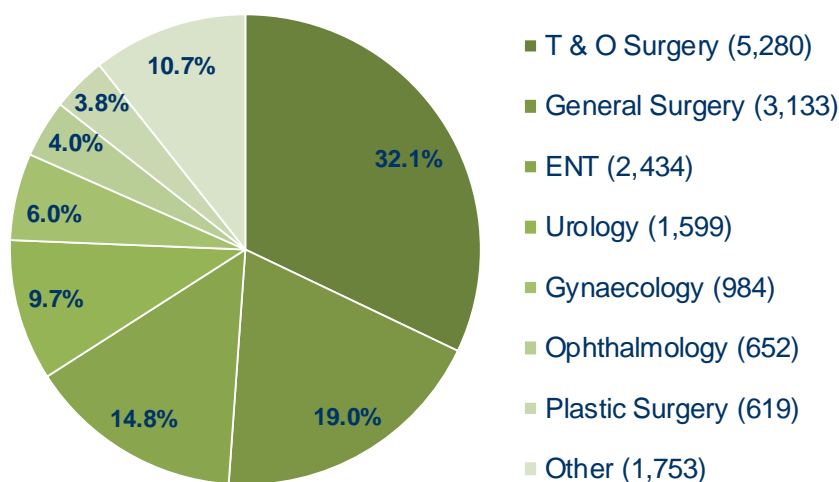
At 31st March 2018, 20.4% (16,454) of patients were waiting more than 52 weeks for either an inpatient or day case admission, compared with 19.1% (14,979) at 31st December 2017, and 13.5% (9,615) at 31st March 2017 (Table 1).

At 31st March 2018, the 52 week element of the target was not achieved by Northern Ireland as a whole or by any individual HSC Trust (Table 2a). Data users should be aware that many inpatient and day case services are not provided at every HSC Trust (see explanatory note 11).

Over a quarter (27.4%, 4,550) of patients in the Western HSC Trust were waiting longer than 52 weeks at 31st March 2018, 21.3% (7,446) in the Belfast HSC Trust, 20.1% (2,398) in the Southern HSC Trust, 17.0% (1,715) in the South Eastern HSC Trust, and 5.0% (345) in the Northern HSC Trust (Table 2a).

Of those waiting more than 52 weeks, 8,631 were waiting for an inpatient admission and 7,823 were waiting for a day case admission (Table 1).

Patients waiting over 52 weeks by specialty



A total of 89.3% (14,701) of the 16,454 patients waiting more than 52 weeks to be admitted were in one of the following specialties: Trauma and Orthopaedic (T&O) Surgery; General Surgery; Ear, Nose and Throat (ENT); Urology; Gynaecology; Ophthalmology and Plastic Surgery (Table 3a).

Source: DoH Inpatient Waiting Times Dataset

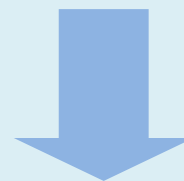
Completed waits for inpatient and day case activity during quarter ending 31st March 2018

There were
44,303

admissions for inpatient and day case treatment in Northern Ireland commissioned by the Health Service



A **decrease of 1.3%** on the previous quarter

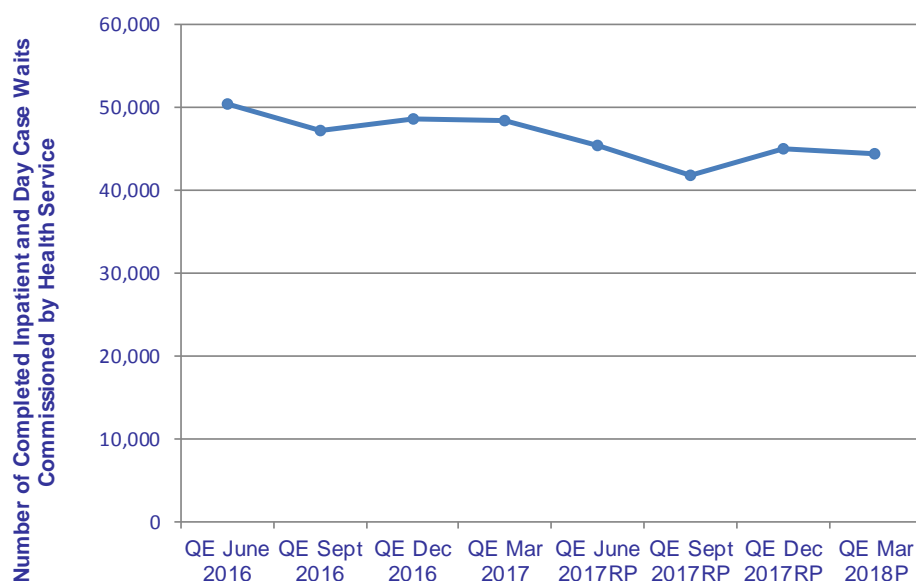


A **decrease of 8.2%** on the same quarter last year

Source: Hospital Inpatient System & IS1 Part 2 Return

A total of 41,515 patients were admitted to Health Service hospitals in Northern Ireland during the quarter ending March 2018, 6.4% (2,837) less than during the quarter ending December 2017 (44,352), and 6.8% (3,026) less than during the quarter ending March 2017 (44,541) (Table 4).

During the quarter ending March 2018, 2,788 patients received inpatient or day case treatment commissioned by the Health Service, within the Independent Sector, over four times (2,247) the number seen during the quarter ending December 2017 (541), and 25.0% (931) less than the same quarter last year (3,719) (Table 4).



Source: Hospital Inpatient System & IS1 Part 2 Return
^P Data are currently provisional
^R Revised figures

When the number of completed inpatient and day case waits within the Independent Sector during the quarter ending March 2018 (2,788) is combined with those treated in Health Service hospitals during the same period (41,515), provisional figures indicate that 44,303

inpatients and day cases received treatment in Northern Ireland commissioned by the Health Service. This was a 1.3% (590) decrease in the number of completed waits commissioned by the Health Service between the quarter ending December 2017 (44,893) and the quarter ending March 2018 (44,303) and a decrease of 8.2% (3,957) compared to quarter ending March 2017 (48,260) (Table 4).

Appendix 1: Tables

Table 1: Quarterly inpatient and day case waiting lists – 31st March 2018¹

Type of Admission		Current Quarter (31 st Mar 2018)	Previous Quarter (31 st Dec 2017)	Same Quarter Last Year (31 st Mar 2017)
Inpatient	Total Patients Waiting	26,339	25,460	23,168
	Number waiting over 13 weeks	20,307	19,243	16,859
	<i>Percentage waiting over 13 weeks</i>	77.1%	75.6%	72.8%
	Number waiting over 52 weeks	8,631	8,180	5,270
Day Case	Total Patients Waiting	54,231	52,980	48,315
	Number waiting over 13 weeks	29,921	28,760	23,178
	<i>Percentage waiting over 13 weeks</i>	55.2%	54.3%	48.0%
	Number waiting over 52 weeks	7,823	6,799	4,345
All Admissions	Total Patients Waiting	80,570	78,440	71,483
	Number waiting over 13 weeks	50,228	48,003	40,037
	<i>Percentage waiting over 13 weeks</i>	62.3%	61.2%	56.0%
	Number waiting over 52 weeks	16,454	14,979	9,615

Source: DoH Inpatient Waiting Times Dataset

¹Refer to Explanatory Notes 1–14

Table 2a: Number of patients waiting for inpatient and day case admissions by HSC Trust and weeks waiting – 31st March 2018¹

HSC Trust	Patients Waiting for Admission by Weeks Waiting						Total Waiting for Admission
	0 - 6	>6 - 13	>13 - 21	>21 - 26	>26-52	>52	
Belfast	5,298	5,596	4,973	2,788	8,916	7,446	35,017
Northern	2,688	1,772	1,014	362	778	345	6,959
South Eastern	2,586	1,900	1,488	689	1,699	1,715	10,077
Southern	2,795	1,974	1,636	838	2,299	2,398	11,940
Western	3,153	2,580	2,045	964	3,285	4,550	16,577
Total	16,520	13,822	11,156	5,641	16,977	16,454	80,570

Source: DoH Inpatient Waiting Times Dataset

¹Refer to Explanatory Notes 1–14

Table 2b: Percentage of patients waiting for inpatient and day case admissions by HSC Trust and weeks waiting – 31st March 2018¹

HSC Trust	Patients Waiting for Admission by Weeks Waiting					
	0 - 6	>6 - 13	>13 - 21	>21 - 26	>26-52	>52
Belfast	15.1%	16.0%	14.2%	8.0%	25.5%	21.3%
Northern	38.6%	25.5%	14.6%	5.2%	11.2%	5.0%
South Eastern	25.7%	18.9%	14.8%	6.8%	16.9%	17.0%
Southern	23.4%	16.5%	13.7%	7.0%	19.3%	20.1%
Western	19.0%	15.6%	12.3%	5.8%	19.8%	27.4%
Total	20.5%	17.2%	13.8%	7.0%	21.1%	20.4%

Source: DoH Inpatient Waiting Times Dataset

¹Refer to Explanatory Notes 1–14

Table 3a: Number of patients waiting for inpatient and day case admissions by weeks waiting and specialty – 31st March 2018¹

Specialty	Patients Waiting for Admission by Weeks Waiting						Total Waiting for Admission
	0 - 6	>6 - 13	>13 - 21	>21 - 26	>26-52	>52	
General Surgery	3,807	2,724	2,215	1,087	2,798	3,133	15,764
T & O Surgery	738	2,017	1,868	1,137	4,221	5,280	15,261
Ophthalmology	1,601	1,697	1,463	786	2,502	652	8,701
ENT	1,016	1,133	950	521	1,855	2,434	7,909
Urology	1,832	1,248	1,248	517	1,082	1,599	7,526
Gynaecology	1,062	887	750	372	1,153	984	5,208
Gastroenterology	1,844	1,079	536	138	251	40	3,888
General Medicine	1,445	700	372	156	512	239	3,424
Pain Management	351	325	386	231	825	564	2,682
Cardiology	682	589	422	183	380	237	2,493
Plastic Surgery	356	333	207	104	429	619	2,048
Oral Surgery	255	243	130	102	242	203	1,175
Paediatric Surgery	129	148	129	70	275	235	986
GP Other	371	122	78	38	12	0	621
Dermatology	224	103	103	44	36	12	522
Paediatrics	44	62	66	70	184	7	433
Rheumatology	158	99	18	5	11	40	331
Neurosurgery	55	65	67	25	55	5	272
Neurology	76	46	31	13	21	81	268
Other	474	202	117	42	133	90	1,058
All Specialties	16,520	13,822	11,156	5,641	16,977	16,454	80,570

Source: DoH Inpatient Waiting Times Dataset

¹Refer to Explanatory Notes 1–14

Table 3b: Percentage of patients waiting for inpatient and day case admissions by weeks waiting and specialty – 31st March 2018¹

Specialty	Percentage of Patients Waiting for Admission by Weeks Waiting					
	0 - 6	>6 - 13	>13 - 21	>21 - 26	>26-52	>52
General Surgery	24.1%	17.3%	14.1%	6.9%	17.7%	19.9%
T & O Surgery	4.8%	13.2%	12.2%	7.5%	27.7%	34.6%
Ophthalmology	18.4%	19.5%	16.8%	9.0%	28.8%	7.5%
ENT	12.8%	14.3%	12.0%	6.6%	23.5%	30.8%
Urology	24.3%	16.6%	16.6%	6.9%	14.4%	21.2%
Gynaecology	20.4%	17.0%	14.4%	7.1%	22.1%	18.9%
Gastroenterology	47.4%	27.8%	13.8%	3.5%	6.5%	1.0%
General Medicine	42.2%	20.4%	10.9%	4.6%	15.0%	7.0%
Pain Management	13.1%	12.1%	14.4%	8.6%	30.8%	21.0%
Cardiology	27.4%	23.6%	16.9%	7.3%	15.2%	9.5%
Plastic Surgery	17.4%	16.3%	10.1%	5.1%	20.9%	30.2%
Oral Surgery	21.7%	20.7%	11.1%	8.7%	20.6%	17.3%
Paediatric Surgery	13.1%	15.0%	13.1%	7.1%	27.9%	23.8%
Dermatology	59.7%	19.6%	12.6%	6.1%	1.9%	0.0%
GP Other	42.9%	19.7%	19.7%	8.4%	6.9%	2.3%
Paediatrics	10.2%	14.3%	15.2%	16.2%	42.5%	1.6%
Rheumatology	47.7%	29.9%	5.4%	1.5%	3.3%	12.1%
Neurology	20.2%	23.9%	24.6%	9.2%	20.2%	1.8%
Neurosurgery	28.4%	17.2%	11.6%	4.9%	7.8%	30.2%
Other	44.8%	19.1%	11.1%	4.0%	12.6%	8.5%
All Specialties	20.5%	17.2%	13.8%	7.0%	21.1%	20.4%

Source: DoH Inpatient Waiting Times Dataset

¹Refer to Explanatory Notes 1–14

Table 4: Number of completed inpatient and day case waits commissioned by the Health Service: QE March 2016 - QE March 2018²

Quarter Ending	Number of Completed Inpatient and Day Case Waits		
	Within Health Service Hospitals	Independent Sector*	Total Commissioned by Health Service
QE Mar 2016	44,109	4,883	48,992
QE June 2016	45,776	4,517	50,293
QE Sept 2016	42,939	4,118	47,057
QE Dec 2016	45,843	2,589	48,432
QE Mar 2017	44,541	3,719	48,260
QE June 2017 ^{RP}	44,645	677	45,322
QE Sept 2017 ^{RP}	41,466	336	41,802
QE Dec 2017 ^{RP}	44,352	541	44,893
QE Mar 2018 ^P	41,515	2,788	44,303

Source: Hospital Inpatient System & IS1 Part 2 Return

^PData are currently provisional

^RData has been revised

*Not National Statistics

²Refer to Explanatory Notes 1, 4 & 15-17

Appendix 2: Explanatory Notes

1. The sources for the data contained in this release are the DoH Inpatient Waiting Times Dataset, Hospital Inpatient System and IS1 Part 2 Return. These returns collect information from Health and Social Care Trusts on a quarterly basis.

2. The '*Inpatient and Day Case Waiting Times Publication – Supporting Documentation*' booklet details the technical guidance and definitions used, as well as notes on how to use the data contained within this statistical release. This booklet is available to view or download from: <https://www.health-ni.gov.uk/publications/northern-ireland-waiting-time-statistics-inpatient-waiting-times-march-2018>.

3. All of the data contained in the tables are available on a quarterly basis and can be supplied by individual specialty or Provider HSC Trust if this level of detail is required. In addition, quarterly data relating to inpatient and day case waiting times have been published in spreadsheet format (CSV), split by HSC Trust, Specialty, Programme of Care and Intended Management of the patient (i.e. Inpatient Admission or Day Case), in order to aid secondary analysis. These data are available at <https://www.health-ni.gov.uk/articles/inpatient-waiting-times-march-2018>.

4. Information includes patients living outside Northern Ireland and privately funded patients waiting for treatment in Health Service hospitals in Northern Ireland.

5. Inpatient and day case waiting list data comprise the number of patients waiting for inpatient admission to hospital and the number of patients waiting for day case treatment.

6. Inpatient admissions can include both (a) patients admitted electively with the expectation that they will remain in hospital for at least one night, and (b) non-elective admissions (e.g. emergency admissions). A patient who is admitted with either of the above intentions, but who leaves hospital for any reason without staying overnight, is still counted as an inpatient admission.

7. Day Cases are patients admitted electively during the course of a day with the intention of receiving care who do not require the use of a hospital bed overnight and who return home as scheduled. If this original intention is not fulfilled and the patient stays overnight, such a patient is counted as an inpatient admission.

8. The inpatient and day case waiting list figures do not include:

- Patients admitted as emergency cases;
- Outpatients;

- Patients undergoing a planned programme of treatment e.g. a series of admissions for chemotherapy;
- Patients waiting for admission as a regular day or night attender
- Maternity (specialties 510 and 520);
- Patients currently receiving inpatient treatment in hospitals who are included on other waiting lists;
- Patients who are temporarily suspended from waiting lists.

9. Waiting time begins from the date the clinician decided to admit the patient. Patients who cannot attend (CNA) have their waiting time adjusted to commence on the date they informed the HSC Trust they could not attend, while patients who do not attend (DNA) have their waiting time adjusted to commence on the date of the DNA.

10. Some people will be waiting on more than one waiting list or be on the waiting list for more than one outpatient appointment/admission/diagnostic test at the same time due to having more than one condition.

11. The Ministerial target, for inpatient and day case waiting times, as set out in the Health and Social Care (Commissioning Plan) Direction states that, by March 2018, at least 55% of patients should wait no longer than 13 weeks for inpatient or day case treatment, with no patient waiting longer than 52 weeks.

12. A number of inpatient and day case services may not be provided at a patient's local HSC Trust or at each of the five HSC Trusts, and instead are provided at a single regional centre for Northern Ireland. In such circumstances, patients from one HSC Trust area will be waiting to be seen at a service provided at another HSC Trust. Users should therefore be cautious in how they use these data. For example, they should not be used to calculate the total number of patients waiting per head of the population residing within each Trust area, as HSC Trusts that provide services for the whole of Northern Ireland will have a higher number of patients waiting per head of the population than those that provide more localised services. Neither should the actual number of patients waiting longer than the recommended waiting time be used as indicator of poor performance within an individual HSC Trust. Users who require an indication of the latter are advised to refer to the commentary section of the publication which provides an indication of the percentage of total waiters that have been waiting over the maximum recommended waiting times, within each HSC Trust.

13. For Tables 2a, 2b, 3a and 3b, each inpatient and day case waiting time band relates to the number of completed weeks a patient has been waiting for admission for treatment. For example, a patient waiting exactly 6 weeks would be included in the 0-6 week time band and a patient waiting 6 weeks

and 1 day would be included in the >6-13 (greater than 6 weeks but waiting no longer than 13 weeks) week time band. Patients waiting 'more than 13 weeks' includes all patients in the >13-21, >21-26, >26-52 and >52 time bands. Patients waiting 'more than 52 weeks' includes all patients in the >52 time band.

14. Patients waiting for day case endoscopies are included within both inpatient and diagnostic waiting times; as such, figures should not be added together.

15. The total number of completed inpatient waits within HSC hospitals each quarter is sourced from the Hospital Inpatient System. During the financial year, data from the Hospital Inpatient System will be marked as provisional. This is because information on inpatient admissions continuously improves during the year before being finalised. Consequently, quarterly information from the Hospital Inpatient System, for the most recent financial year, will be revised on a quarterly basis.

16. The number of completed inpatient waits within HSC hospitals each quarter do not include:

- Elective planned patients
- Emergency patients
- Maternity (specialties 510 and 520)
- Private patients
- Amenity patients
- Mental Health and Learning Disability patients
- Others (including transfers)

17. The numbers of patients who received inpatient treatment, commissioned by the Health Service, in the Independent Sector, are provided by the HSC Board. They are not National Statistics and they have not been validated by the Department, however, they have been included to provide users with a comprehensive view of completed inpatient waits during each quarter.

18. HIB surveyed data providers during 2011/12 to ascertain the cost of producing, validating and submitting the information required for this publication. This relates to the time taken to generate, validate and submit data, over and above what is already required by their organisation for internal performance management purposes. The annual cost to data providers of compliance with HIB's requirements for this publication, based on HSC salary costs, was £1,670.

19. Figures relating to inpatient and day case waiting times for the quarter ending 30th June 2018 will be released on Thursday 30th August 2018.

Further information on Inpatient and Day Case Waiting Times in Northern Ireland is available from:

Jennifer Finlay

Hospital Information Branch
Information & Analysis Directorate
Department of Health
Stormont Estate
Belfast, BT4 3SQ

✉ Email: statistics@health-ni.gov.uk

This Statistical bulletin and others published by Hospital Information Branch are available to download from the DoH Internet site at:

<https://www.health-ni.gov.uk/publications/type/statisticalreports>