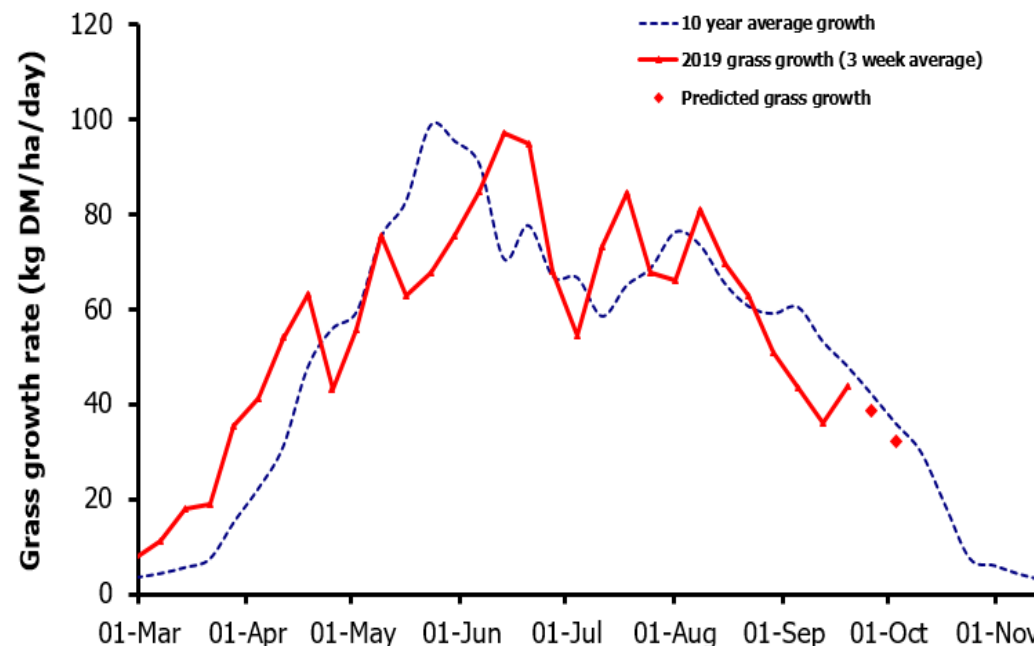
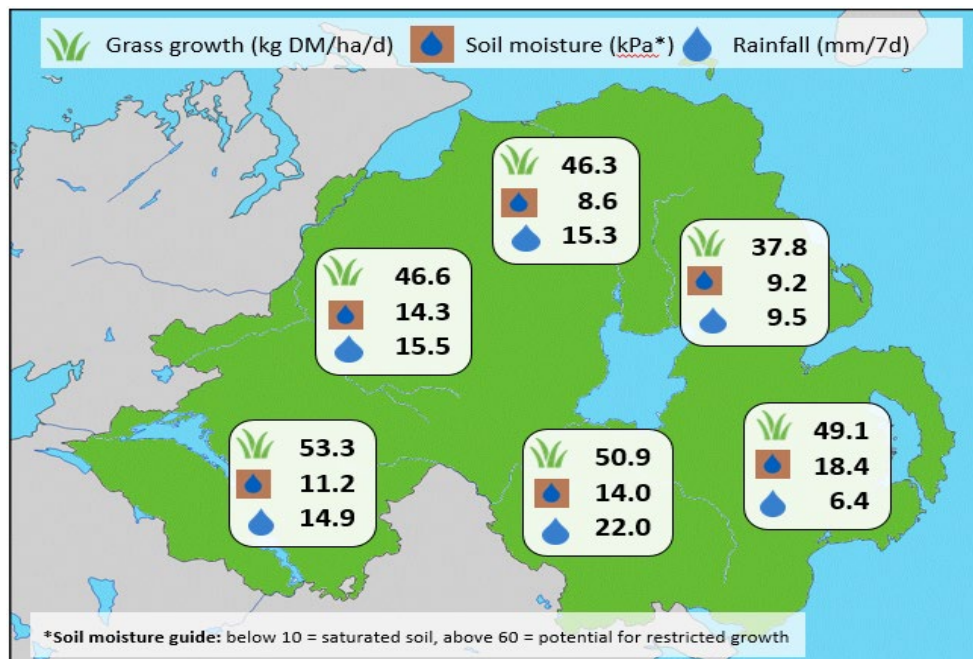


Week Beginning 16 September 2019



Weekly Grass Growth (kg DM/ha/day)		
GrassCheck plots		43.6
Dairy farms*		48.0
Beef & sheep farms*		47.0
Forecast	7 day	38.6
	14 day	32.0

	Grass Quality	
	Plots	On-farm
DM (%)	15.5	14.8
ME (MJ/kg DM)	10.9	10.8
CP (% DM)	17.9	18.4
WSC (% DM)	12.6	9.9

MANAGEMENT NOTES:

- Average grass growth has stayed around the long-term expected value for mid-September over the last 7 days, and rotations will be lengthening as growth slows. With on-farm growth rates across NI ranging between 25 and 80 kg DM/ha/d it is important to assess growth rates on your own grazing platform regularly.
- With fair weather forecast for the next week, make the most of good grazing and ground conditions to get swards grazed out cleanly to your target residuals.
- Currently, average soil temperatures are 13.7 °C. A good response should be seen to slurry applications, providing valuable N, P and K for grass growth.

*On-farm grass growth data supplied by AgriNet

GrassCheck plots receive 270 kgN/ha/year

