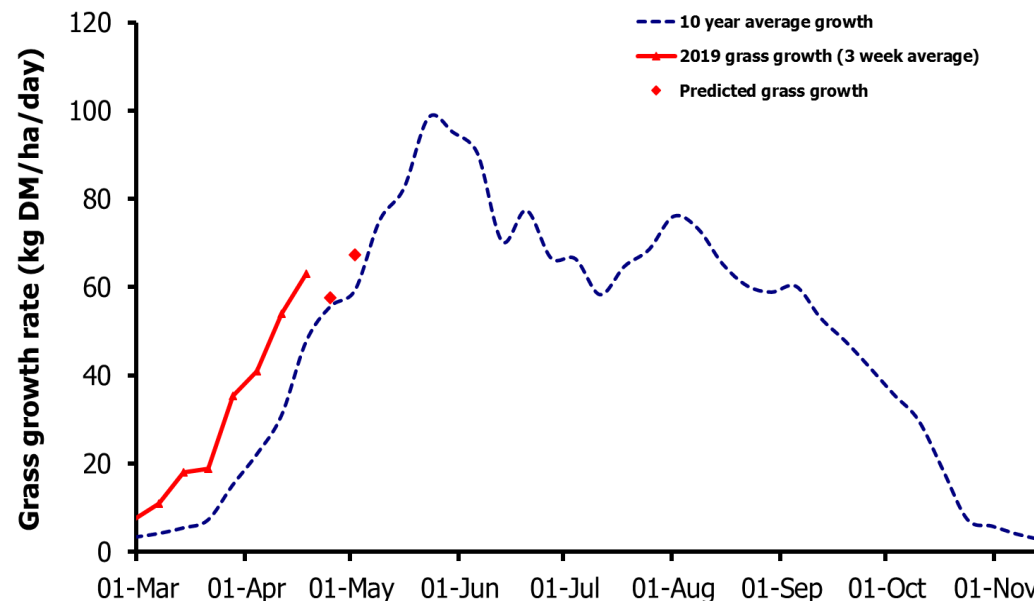
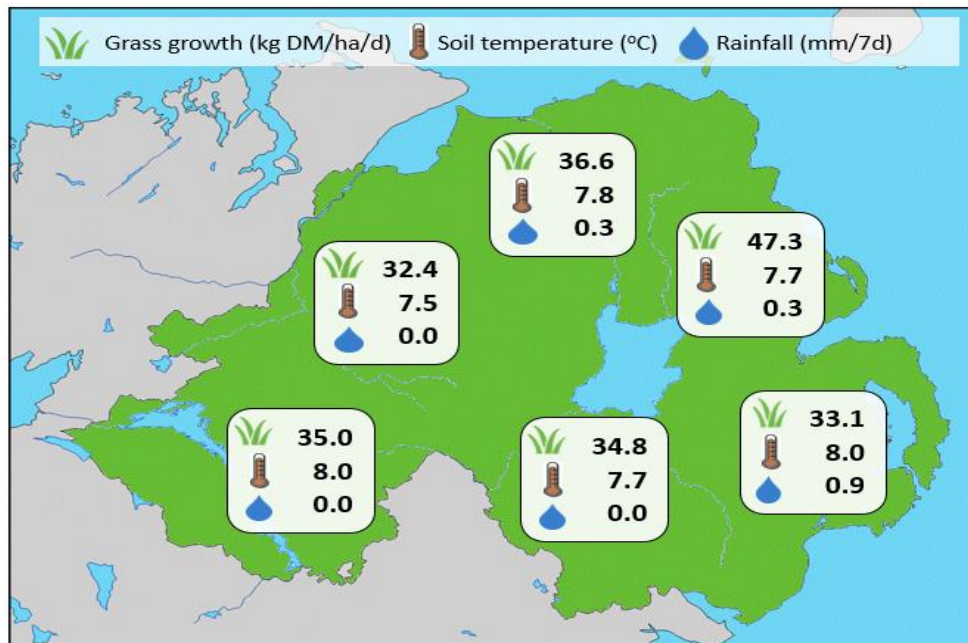


Week Beginning 15 April 2019



Weekly Grass Growth (kg DM/ha/day)		
GrassCheck plots		63.1
Dairy farms*		38.8
Beef & sheep farms*		34.3
Forecast	7 day	57.6
	14 day	67.4

	Grass Quality	
	Plots	On-farm
DM (%)	21.4	21.3
ME (MJ/kg DM)	12.3	12.0
CP (% DM)	19.4	18.7
WSC (% DM)	18.3	16.1

MANAGEMENT NOTES:

- Grass growth rates remain high on the GrassCheck plots however growth on farms is more typical of average conditions for this time of year.
- While grass growth remains good on ungrazed areas, growth rates on re-growth have been checked by the cooler weather this past week. The improved forecast for the coming weeks should stimulate growth in these areas again.
- A dry week has meant ground conditions continue to improve with good opportunities to graze out swards.
- A series of 4 GrassCheck farm walks will be held from 24 – 1 May. Further details are available on the agrisearch website www.agrisearch.org.

*On-farm grass growth data supplied by AgriNet

GrassCheck plots receive 270 kgN/ha/year



@GrassCheck