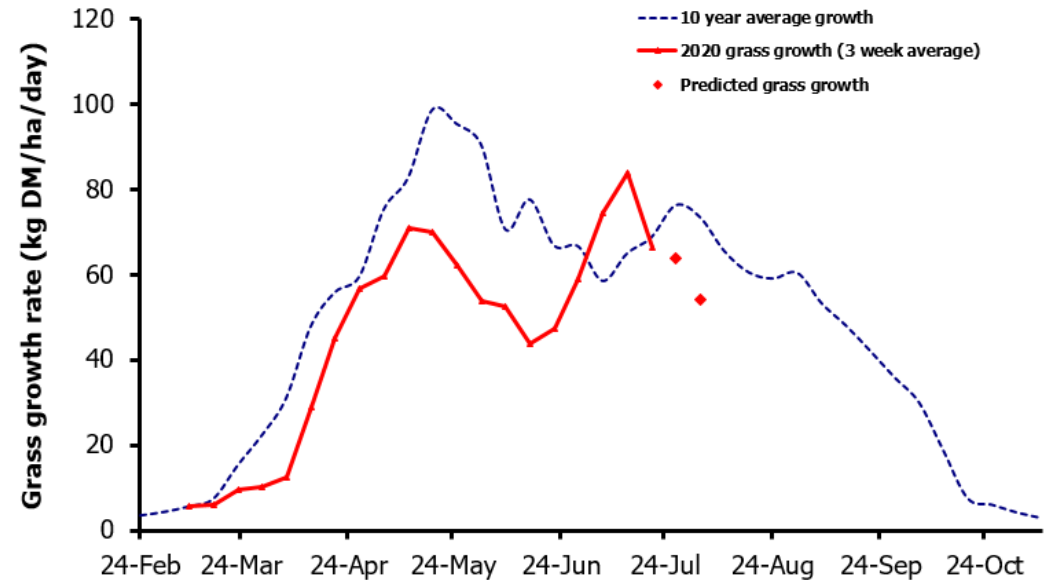
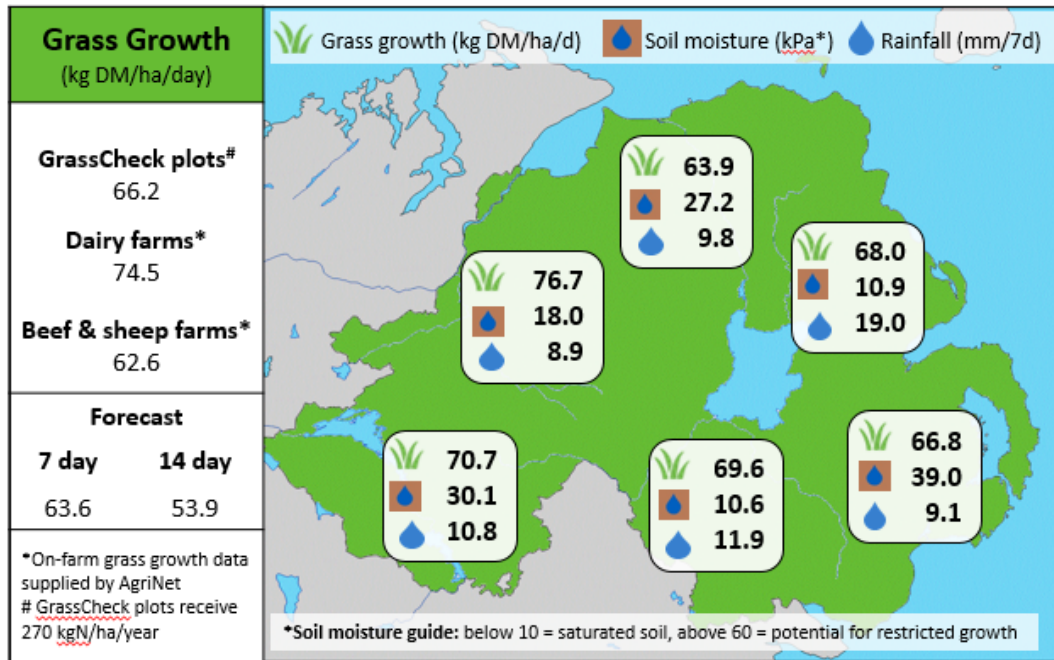


## Week Beginning 20<sup>th</sup> July 2020



### MANAGEMENT NOTES:

- Some mostly dry weather and average daily air temperatures in the low-teens in the current 14-day weather forecast are generating grass growth rate predictions showing a decline over the next two weeks. Current growth rates recorded on both GrassCheck farms (69.3 kg) and plots (66.2 kg) this week are close to the long-term seasonal average of 68.6 kg DM/ha/d.
- Grass quality is very similar to typical values for this time of year, but ME is slightly lower at 11.5 MJ/kg DM compared to 11.8 MJ in the long-term GrassCheck data. Consider pre-mowing paddocks through this rotation to reinstate clean residuals if needed, to improve quality at the next rotation.

Value of Grass		Grass Quality	
Dairy – maintenance plus (M+) (kg/cow/day)*	17.3	DM (%)	17.5
Growing animals – daily live weight gain (kg/head/day)**	1.02	ME (MJ/kg DM)	11.5
*M+ calculated assuming: 650kg cow, Maintenance=75 MJ/day, 5.3 MJ/kg and 14.5 kg DMI		CP (% DM)	16.2
**Beef daily gain assuming: 300 kg beef steer, Maintenance=35 MJ/day, 40 MJ/kg gain, and 6.6 kg DMI		WSC (% DM)	14.8