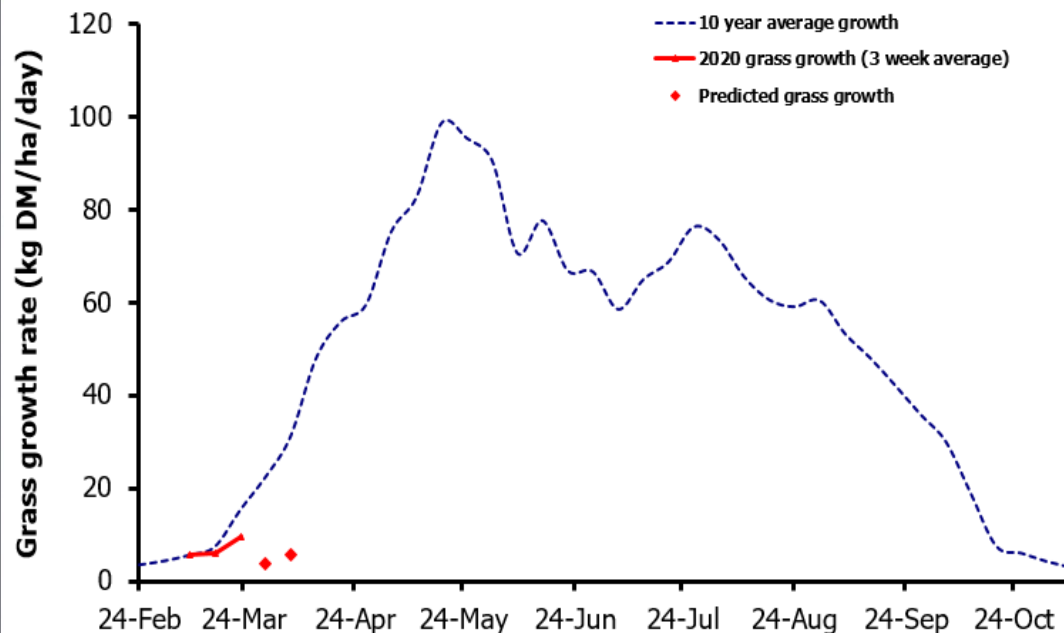
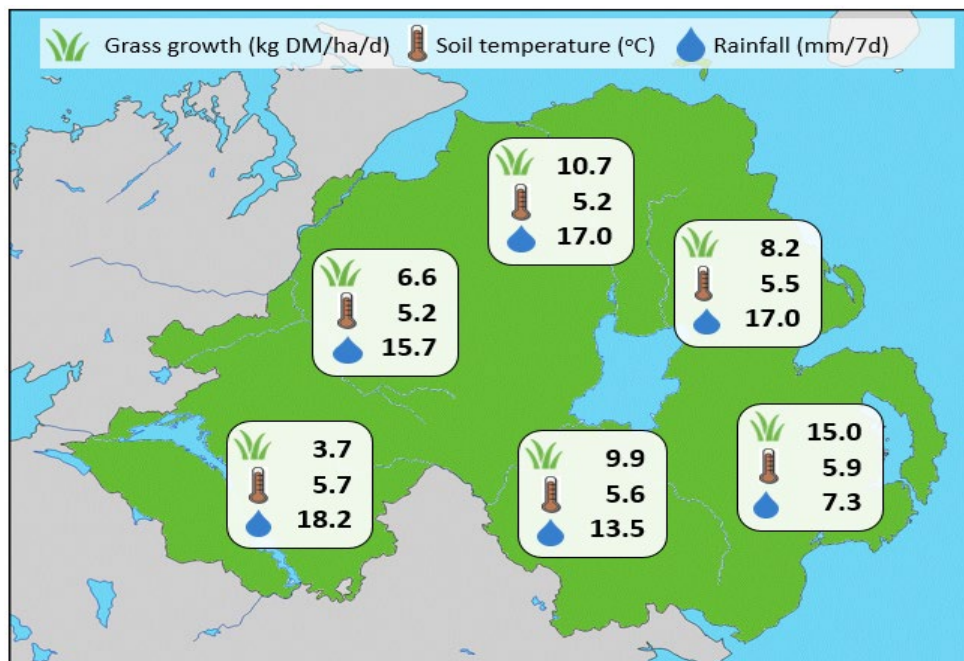


## Week Beginning 23 March 2020



Weekly Grass Growth (kg DM/ha/day)		
GrassCheck plots#	9.7	
Dairy farms*	11.5	
Beef & sheep farms*	7.0	
Forecast	7 day	3.8
	14 day	5.5

Grass Quality	
DM (%)	22.9
ME (MJ/kg DM)	11.7
CP (% DM)	18.8
WSC (% DM)	16.6

### MANAGEMENT NOTES:

- After an incredibly wet and late start to the 2020 grazing season, soil temperatures are currently averaging just 5.5 °C and at 9.7 kg DM/ha/d plot growth is just 64% of the long-term average (15.1 kg DM/ha) for late March.
- Wet ground conditions have been challenging over the last few months, but as soils begin to dry some opportunities for grazing are now opening up. On-off grazing can help to utilise available grass whilst reducing damage to swards and soils.
- Despite cooler conditions being forecast, average farm covers across the GrassCheck network are good. Opportunities for grazing even at lower covers should be taken as soon as ground conditions allow to stimulate growth.

\*On-farm grass growth data supplied by AgriNet

# GrassCheck plots receive 270 kgN/ha/year

