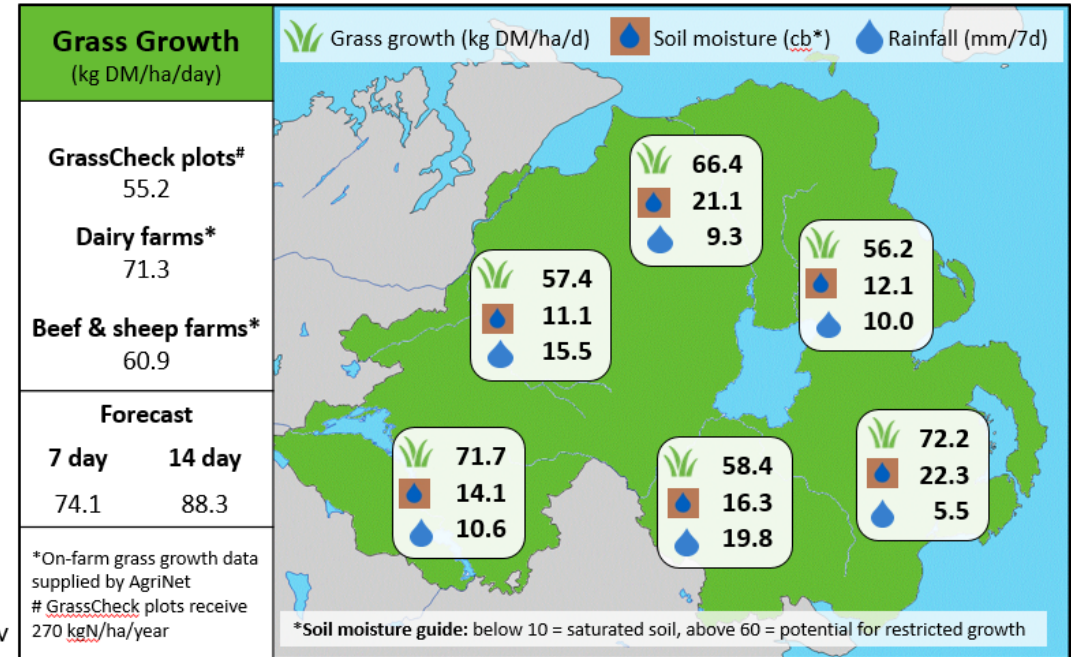
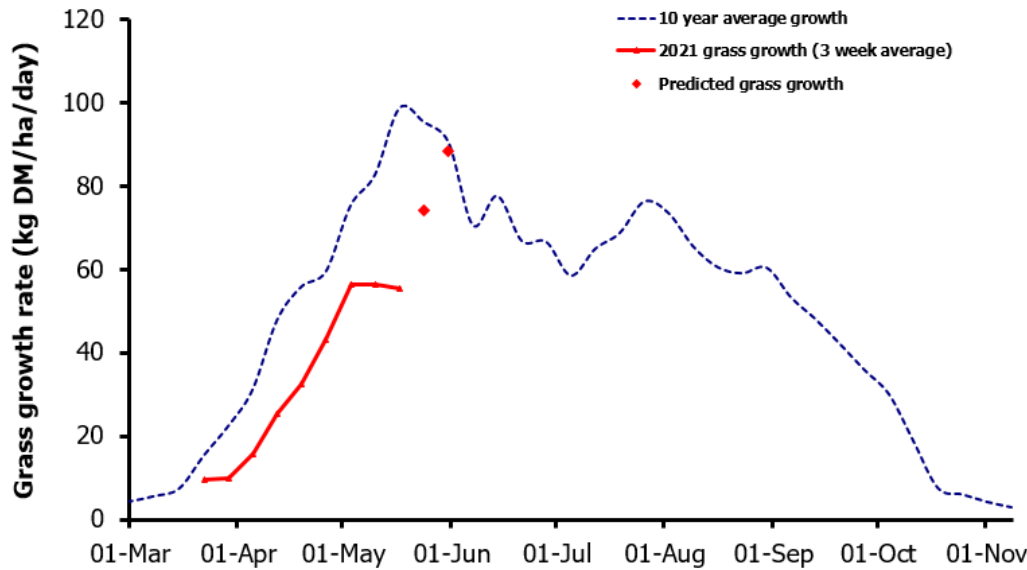


## Week Beginning 17<sup>th</sup> May 2021



### MANAGEMENT NOTES:

- Grass growth on farms have exceeded plot growth this week, potentially due to longer rotation lengths. Soil moisture content is no longer a limiting factor and grass growth is expected to increase this week as swards reach heading.
- First-cut silage for many has been slightly delayed due to the spring but is now complete or well-underway on many farms. Consider trailing shoe or dribble bar for post first cut slurry application to maximise nitrogen return.
- If possible measure farm grass covers every 5 days as we approach peak growth. Silage aftermaths on the grazing platform may allow for clean grazing whilst other grazed paddocks are mown out and ensiled.
- With grass ME averaging 12.3 MJ/kg DM this week, grazing should continue to support high levels of performance, with M+ 23.0 and an ADG of 1.15 kg.

	Value of Grass	Grass Quality	
Dairy – maintenance plus (M+) (kg/cow/day)*	23.0	DM (%)	19.7
Growing animals – daily live weight gain (kg/head/day)**	1.15	CP (% DM)	16.5
*M+ calculated assuming: 650kg cow, and 16 kg DMI. Maintenance=75 MJ/day, 5.3 MJ/kg milk		WSC (% DM)	17.0
**Beef daily gain assuming: 300 kg beef steer, and 6.6 kg DMI. Maintenance=35 MJ/day, 40 MJ/kg gain		ME (MJ/kg DM)	12.3