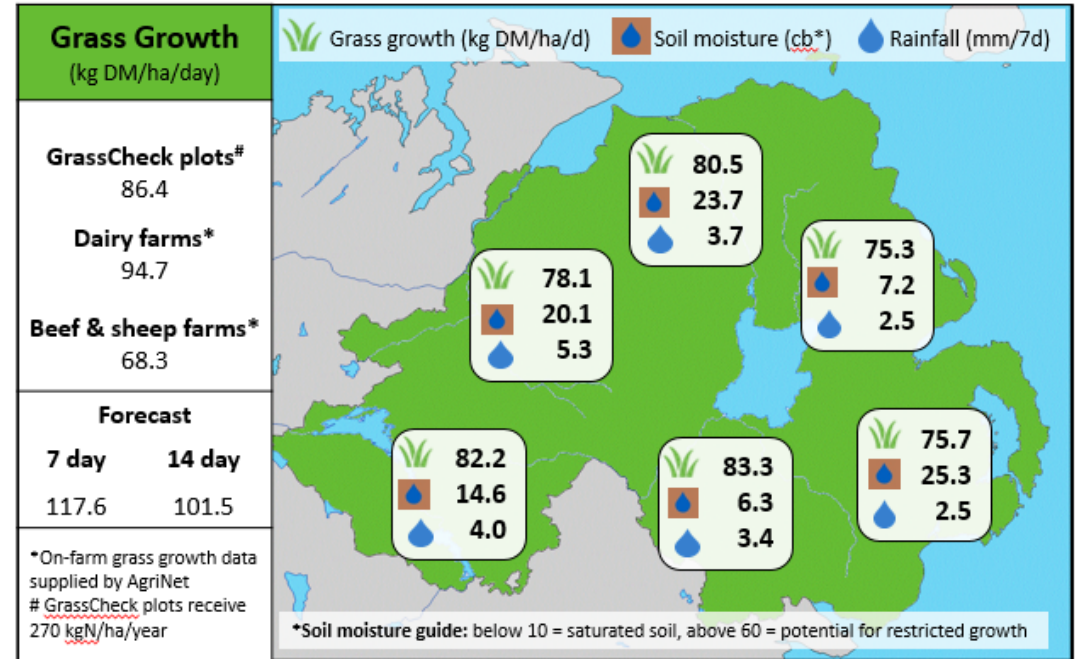
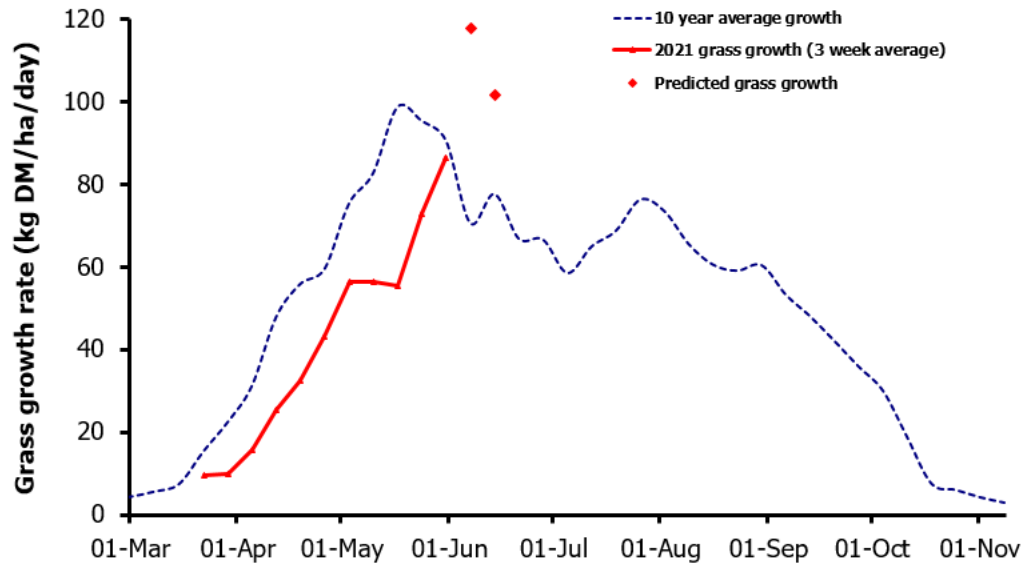


Week Beginning 31st May 2021



MANAGEMENT NOTES:

- Grass growth has increased significantly and is predicted to reach 117 kg DM/ha this week due to better conditions and adequate soil moisture.
- Grass DM yields to-date from the GrassCheck plots are 1.59 t DM/ha below the long-term March-May average, with just 67% of typical growth.
- Measure the grazing platform every 5 days to best control peak growth.
- Identify and remove surplus grass quickly either by increasing the grazing demand by increasing stock numbers or reducing supplement feed, or reducing the grazing area by removing surplus grass as baled silage.
- Performance from grass has reduced slightly, due to a small drop in ME (MJ/kg DM). Maintaining tight grazing residuals throughout this peak growth stage will determine grass quality in the next grazing rotation.

Value of Grass		Grass Quality	
Dairy – maintenance plus (M+) (kg/cow/day)*	21.5	DM (%)	18.2
Growing animals – daily live weight gain (kg/head/day)**	1.07	CP (% DM)	14.9
*M+ calculated assuming: 650kg cow, and 16 kg DMI. Maintenance=75 MJ/day, 5.3 MJ/kg milk		WSC (% DM)	16.3
**Beef daily gain assuming: 300 kg beef steer, and 6.6 kg DMI. Maintenance=35 MJ/day, 40 MJ/kg gain		ME (MJ/kg DM)	11.8