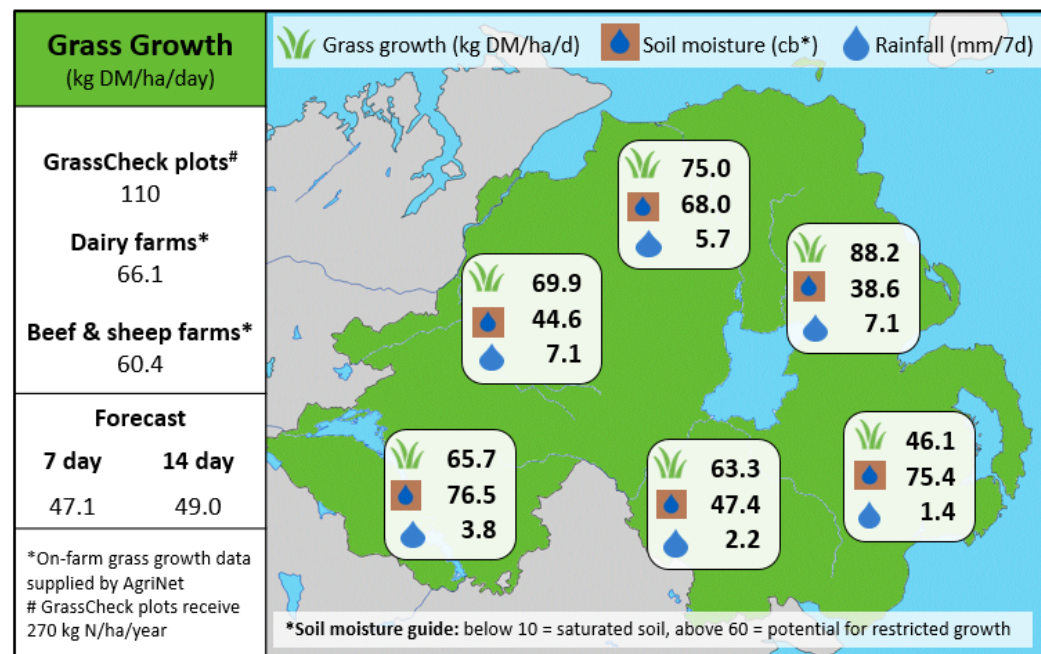
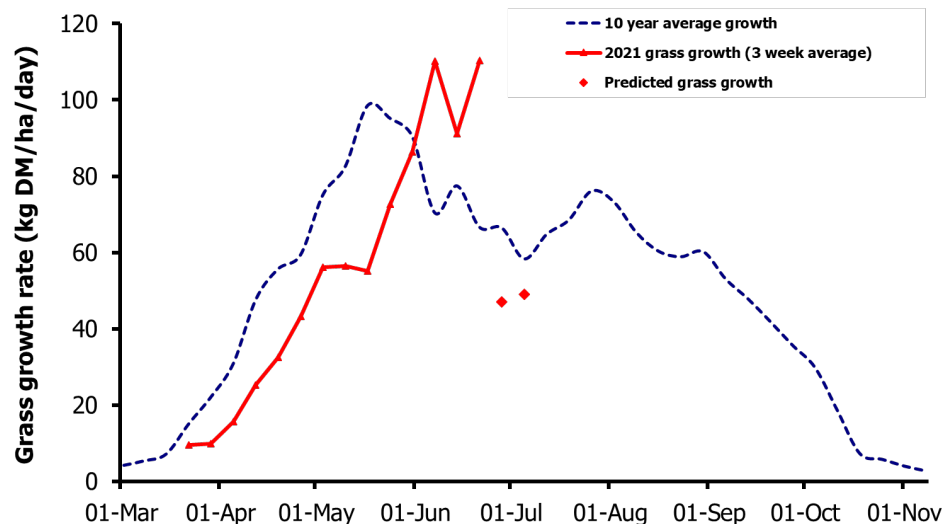


Week Beginning 21st June 2021



MANAGEMENT NOTES:

- Grass growth is predicted to drop below the 10 year average over the next 14 days. The main contributing factor is a soil moisture deficit, with some very high readings in eastern areas. It is difficult to know whether the rain forecast for later in the week will be enough to correct soil moisture in the short term.
- Grass quality has declined and is reflected in the animal performance expected from grass. On farm, a wide range of grass qualities can be seen.
- Managing the high variation in grass growth over short periods of time at this time of year makes it very challenging to maintain grass supply and quality.
- Continue to measure grass regularly, as a few days can bring a lot of change.
- Regularly access your grazing demand, remembering that growing cattle will have an increased demand now than when turned out and adjust as required.

Value of Grass		Grass Quality	
Dairy – maintenance plus (M+) (kg/cow/day)*	17.3	DM (%)	18.0
Growing animals – daily live weight gain (kg/head/day)**	0.96	CP (% DM)	17.3
*M+ calculated assuming: 650kg cow, and 15 kg DMI. Maintenance=75 MJ/day, 5.3 MJ/kg milk **Beef daily gain assuming: 300 kg beef steer, and 6.6 kg DMI. Maintenance=35 MJ/day, 40 MJ/kg gain		WSC (% DM)	13.7
		ME (MJ/kg DM)	11.1