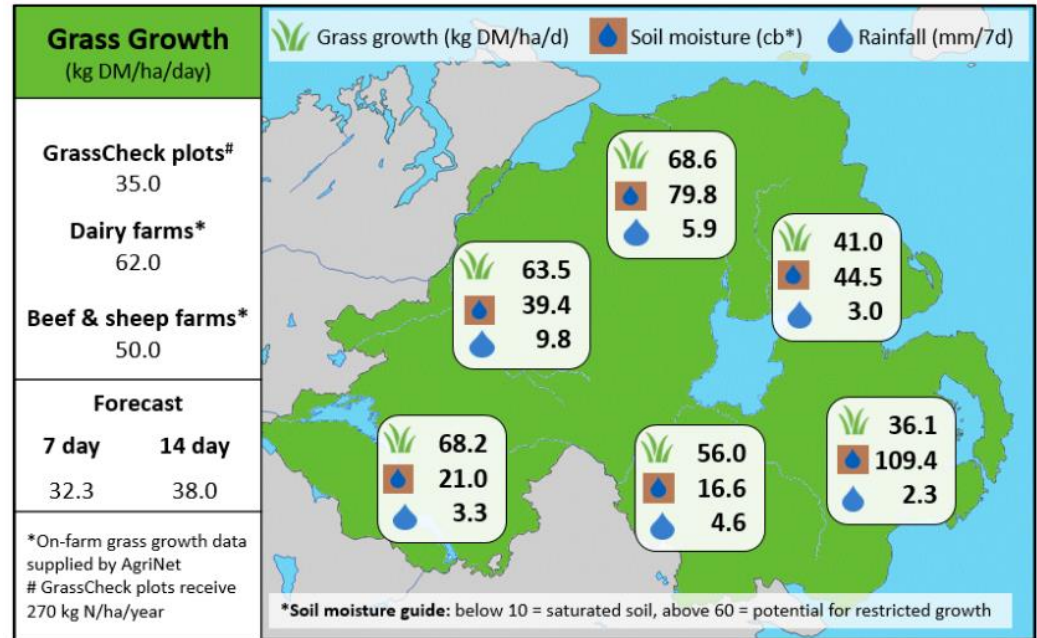
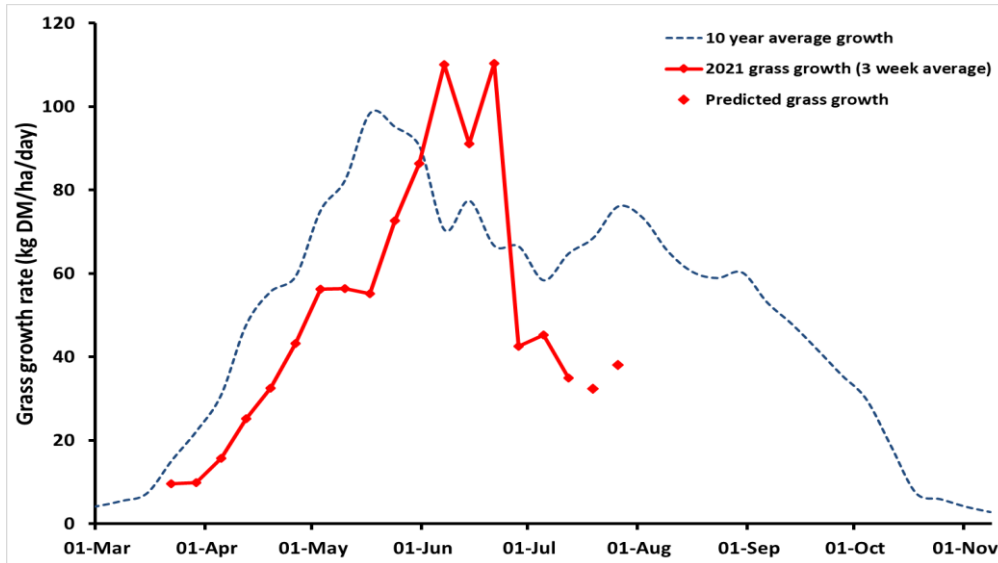


Week Beginning 12th July 2021



MANAGEMENT NOTES:

- This week again sees growth rates significantly limited by soil moisture deficit, as a result of little or no rainfall. Unfortunately, with very little rain expected during the next two weeks, grass growth forecasting models are predicting current conditions to persist.
- Grazing fields have headed out and grass is becoming stemmy. Topping will be necessary to get quality back into swards for the next rotation.
- Revise winter feed budgets now to allow time to source alternative forage options, if necessary, for the winter months.
- Where reseeds have been sown but haven't yet germinated, seeds should still be viable and should germinate when sufficient moisture is present.

Value of Grass		Grass Quality	
Dairy – maintenance plus (M+) (kg/cow/day)*	17.5	DM (%)	18.7
Growing animals – daily live weight gain (kg/head/day)**	0.97	CP (% DM)	15.3
*M+ calculated assuming: 650kg cow, and 15 kg DMI. Maintenance=75 MJ/day, 5.3 MJ/kg milk **Beef daily gain assuming: 300 kg beef steer, and 6.6 kg DMI. Maintenance=35 MJ/day, 40 MJ/kg gain		WSC (% DM)	15.2
		ME (MJ/kg DM)	11.2