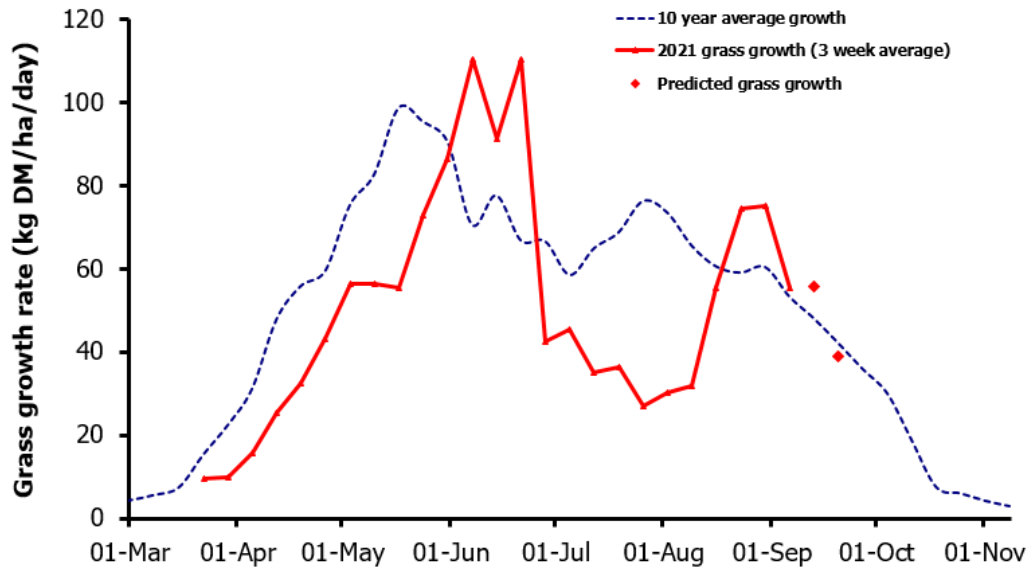
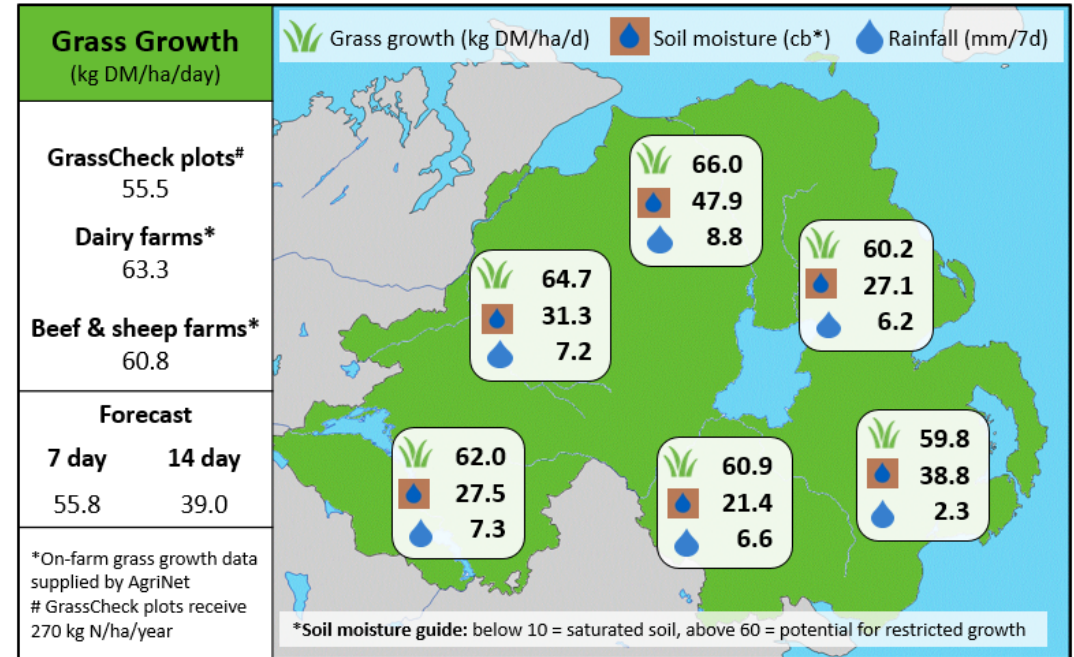


Week Beginning 6th September 2021



MANAGEMENT NOTES:

- Grass growth rates have reduced back to the seasonal average and this trend is predicted to broadly continue over the next two weeks.
- With ground conditions remaining good, aim to graze paddocks out cleanly to ensure a good supply of high-quality grass into late autumn and early spring. Strip grazing paddocks can help to achieve target residuals and reduce wastage, especially when grazing heavy covers.
- The deadline for spreading Nitrogen fertiliser is 15th September. Take advantage of the current favourable conditions to spread any final fertiliser applications for the year, to boost autumn growth and help to build covers ahead of winter.



Value of Grass		Grass Quality	
Dairy – maintenance plus (M+) (kg/cow/day)*	10.3	DM (%)	15.1
Growing animals – daily live weight gain (kg/head/day)**	0.91	CP (% DM)	18.7
*M+ calculated assuming: 650kg cow, and 13.5 kg DMI. Maintenance=75 MJ/day, 5.3 MJ/kg milk **Beef daily gain assuming: 300 kg beef steer, and 6.6 kg DMI. Maintenance=35 MJ/day, 40 MJ/kg gain		WSC (% DM)	9.3
		ME (MJ/kg DM)	10.8