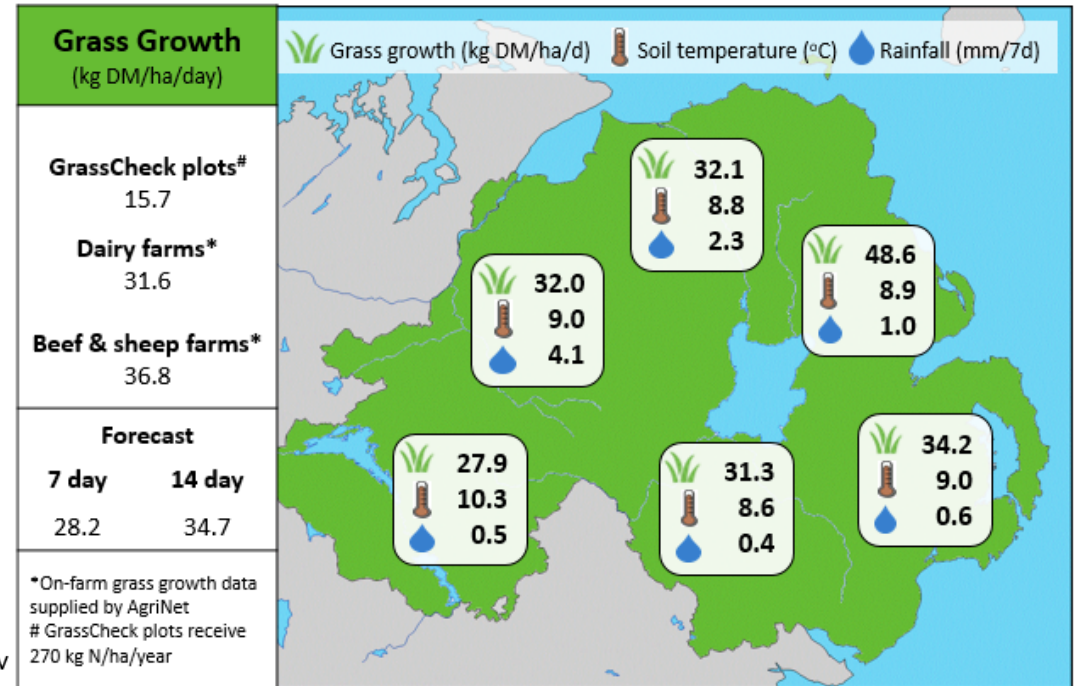
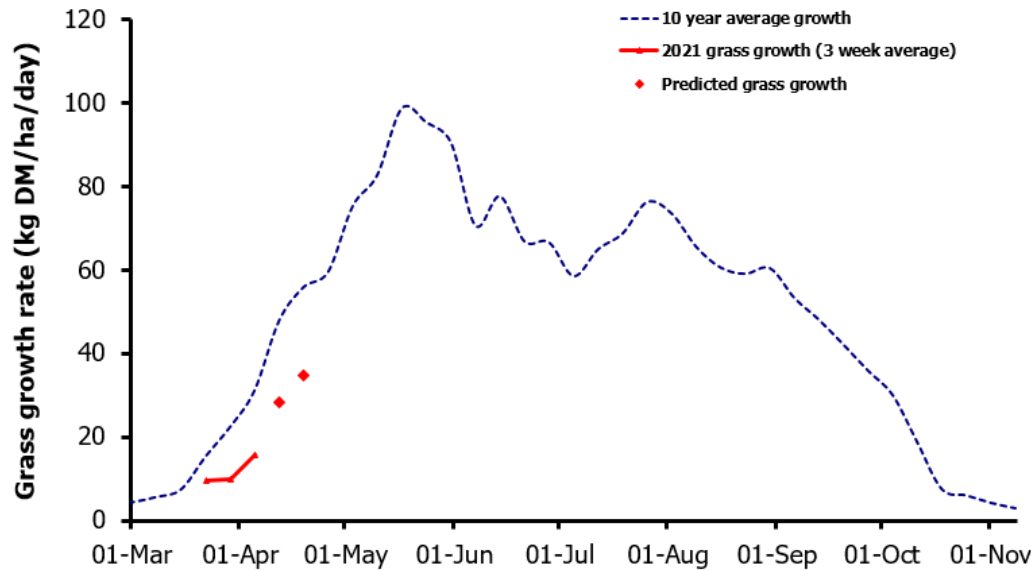


Week Beginning 5th April 2021



MANAGEMENT NOTES:

- Following a dry, settled and mild spell of weather, we see the return of colder temperatures combined with higher wind speeds and some snow
- Grass growth is predicted to remain stagnant for the incoming number of days as a result of soil temperatures remaining low
- Prioritise maintaining grass in animal's diet, focusing on ensuring the animal is well fed firstly and grazing residuals second in inclement weather
- This week will see the commencement of the second grazing round for some, it is important Average Farm Cover remains above 2150 Kg DM/ha
- It is important to know how much grass you have available for grazing, your grazing demand and your silage reserves to budget accordingly

Value of Grass		Grass Quality	
Dairy – maintenance plus (M+) (kg/cow/day)*	22.1	DM (%)	17.9
Growing animals – daily live weight gain (kg/head/day)**	1.11	CP (% DM)	22.3
*M+ calculated assuming: 650kg cow, and 16 kg DMI. Maintenance=75 MJ/day, 5.3 MJ/kg milk **Beef daily gain assuming: 300 kg beef steer, and 6.6 kg DMI. Maintenance=35 MJ/day, 40 MJ/kg gain		WSC (% DM)	12.5
		ME (MJ/kg DM)	12.0