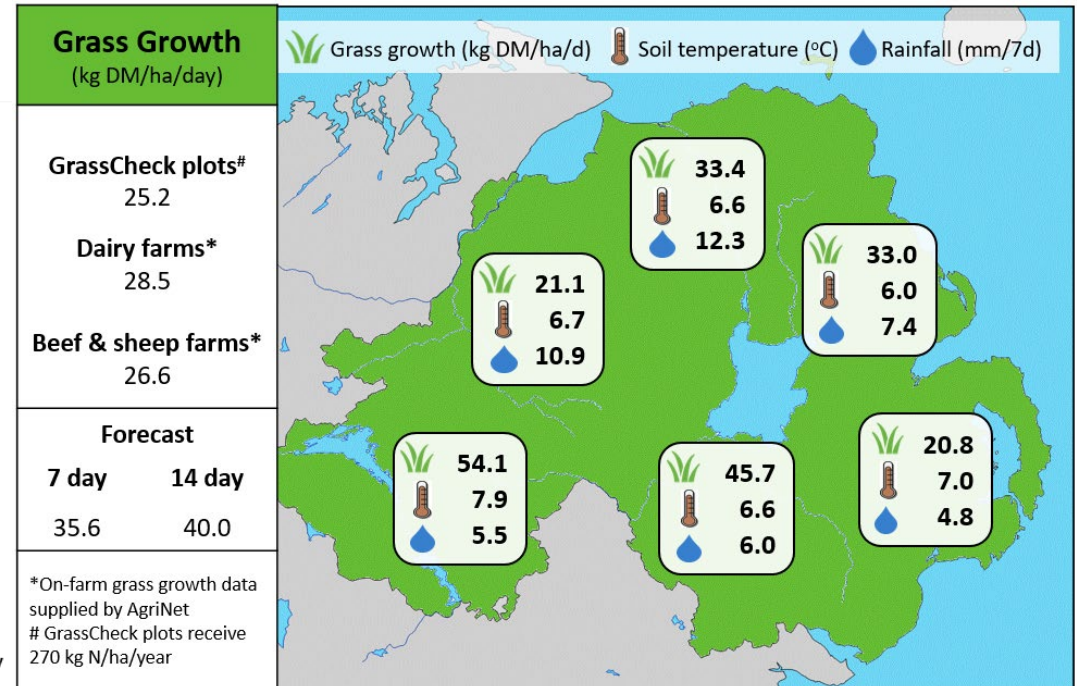
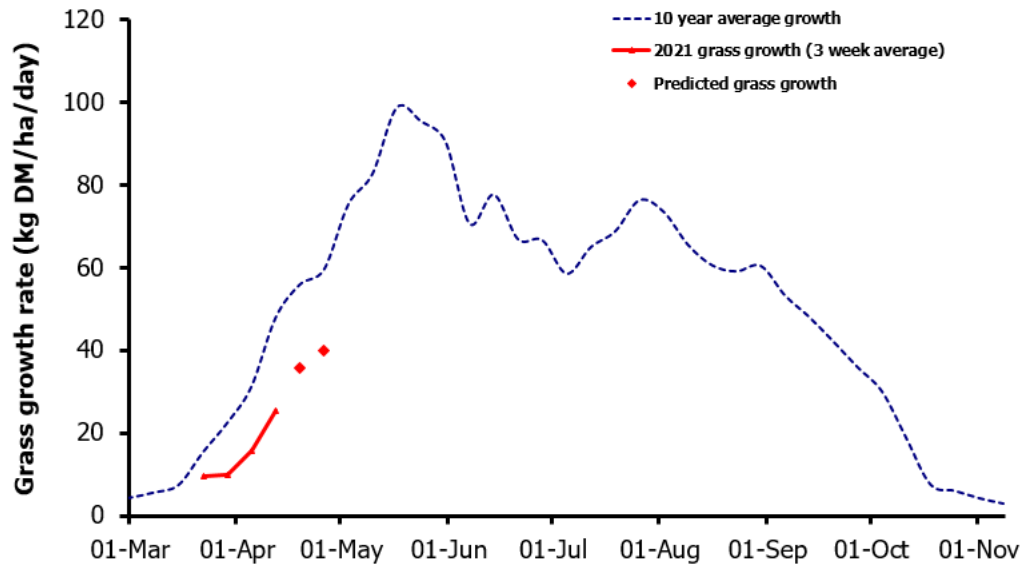


Week Beginning 12th April 2021



MANAGEMENT NOTES:

- Expected animal intake and consequently M+ values have been revised downwards this week due to cold weather hindering grass supply and hampering animal intake rates, which may be 10-20% lower than expected.
- Due to the prolonged spell of below average temperatures, grass growth on farms and plots is still lagging well behind the long-term average at present. Continue to walk the farm weekly to assess regrowths and grass availability.
- To manage slow growth rates, consider increasing the size of the grazing area, if possible, or utilise silage stores for buffer feeding to slow the rotation if needed.
- Continue to take advantage of the relatively dry spell to graze higher covers or heavier parts of the farm.

	Value of Grass	Grass Quality	
Dairy – maintenance plus (M+) (kg/cow/day)*	15.0	DM (%)	19.8
Growing animals – daily live weight gain (kg/head/day)**	0.91	CP (% DM)	17.6
*M+ calculated assuming: 650kg cow, and <u>13 kg</u> DMI. Maintenance=75 MJ/day, 5.3 MJ/kg milk		WSC (% DM)	16.6
**Beef daily gain assuming: 300 kg beef steer, and <u>6.0 kg</u> DMI. Maintenance=35 MJ/day, 40 MJ/kg gain		ME (MJ/kg DM)	11.9