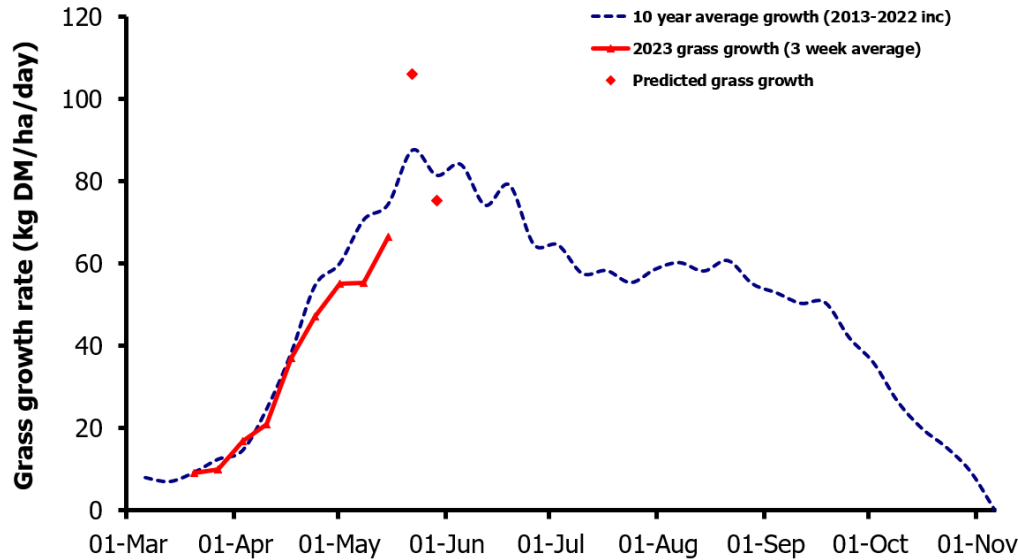
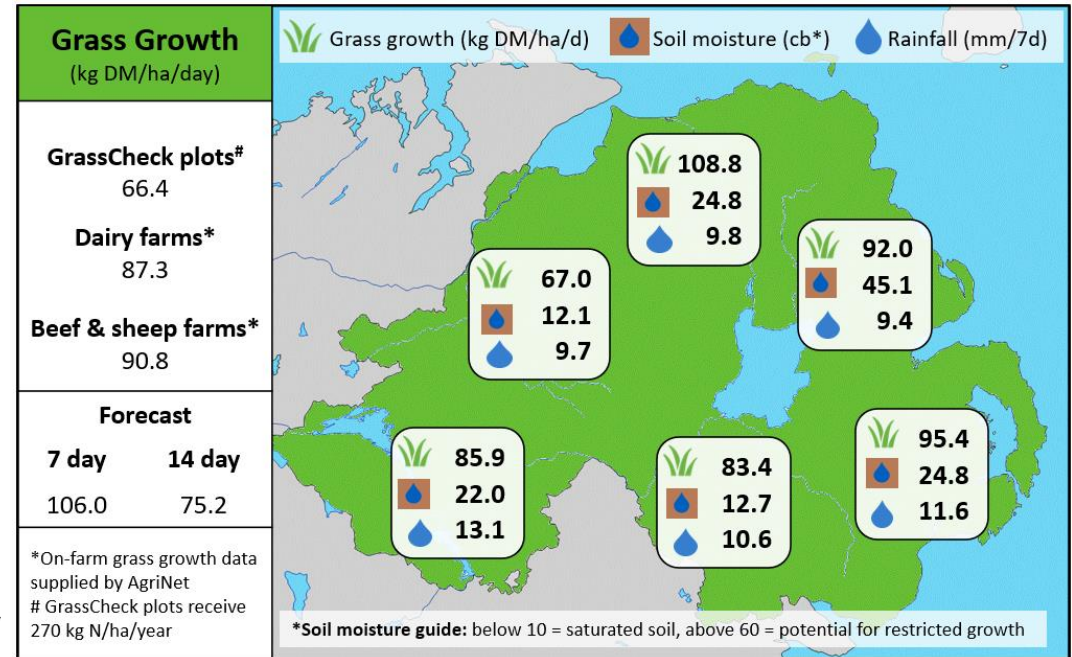


Week Beginning 15th May 2023



MANAGEMENT NOTES:

- On farm grass growth continues to follow grass growth predictions, with growth rate forecast to reach its highest so far this season in 7 days' time.
- Measure grass at least once per week, as swards can change rapidly under present conditions. Make use of grass budgeting tools, to help identify a grass surplus. Removing grazing area for silage will help correct a grass surplus and can also clean up areas with previously poor grazing residuals.
- A grass surplus must be removed quickly, to avoid a deficit in 21 days' time.
- Grass quality across GC farms has remained good. Stem content in grass is increasing and many grass varieties will be approaching their heading dates shortly. Target grazing residuals now that conditions are more favourable.



| | Value of Grass | Grass Quality | |
|---|----------------|---------------|------|
| Dairy – maintenance plus (M+) (kg/cow/day)* | 20.3 | DM (%) | 17.9 |
| Growing animals – daily live weight gain (kg/head/day)** | 1.01 | CP (% DM) | 17.0 |
| *M+ calculated assuming: 650kg cow, and 15 kg DMI. Maintenance=75 MJ/day, 5.3 MJ/kg milk **Beef daily gain assuming: 300 kg beef steer, and 6.6 kg DMI. Maintenance=35 MJ/day, 40 MJ/kg gain | | WSC (% DM) | 15.0 |
| | | ME (MJ/kg DM) | 11.4 |