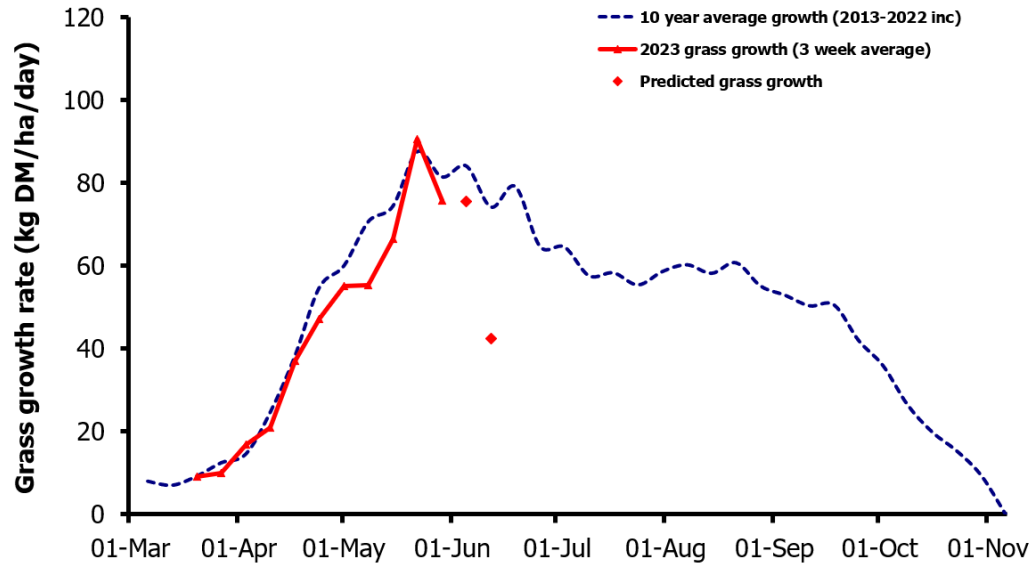
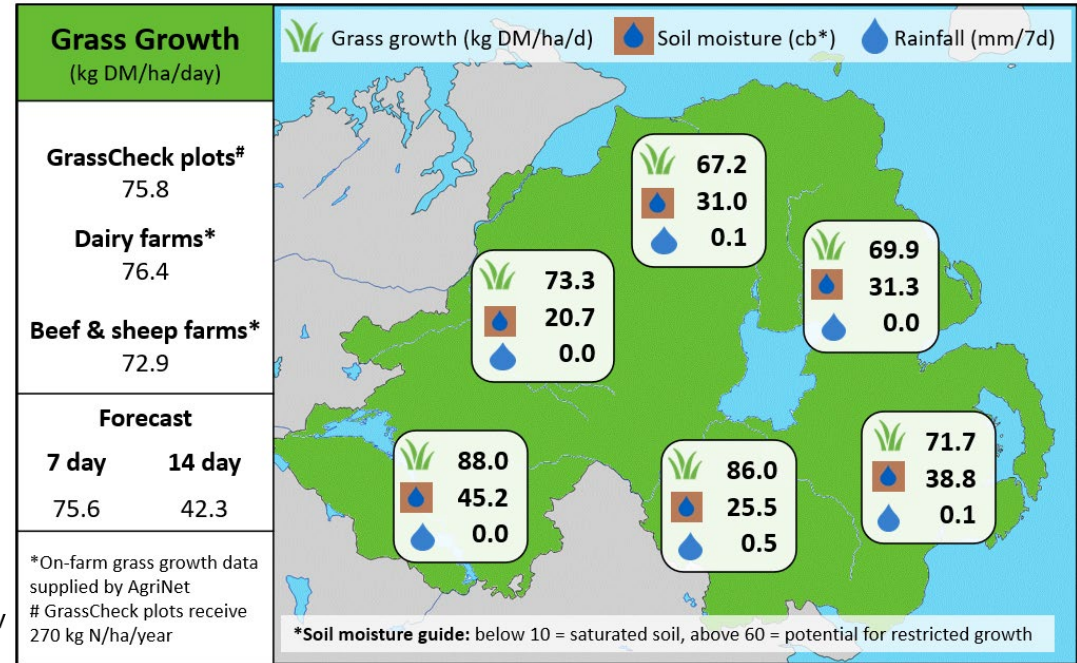


Week Beginning 29th May 2023



MANAGEMENT NOTES:

- Growth rates across the province have been slightly below the LT. average and are predicted to fall again whilst the warm, dry conditions continue.
- Soil Moisture deficits and low overnight temps are contributing to the decrease in growth rates - measure growth regularly and consider your opportunities to lengthen the rotation if a shortfall in forage is predicted.
- Some parts of the province will see growth fall below demand in the next few weeks, take early action in decreasing stocking rate or increasing supplementation, do not let AFC drop below 2,100kgDM/ha.
- Results show a decrease in the average CP of samples taken, monitor closely and review the CP of in-parlour feeding to maintain CP requirements.



Value of Grass		Grass Quality	
Dairy – maintenance plus (M+) (kg/cow/day)*	20.3	DM (%)	19.2
Growing animals – daily live weight gain (kg/head/day)**	1.01	CP (% DM)	14.3
*M+ calculated assuming: 650kg cow, and 15 kg DMI. Maintenance=75 MJ/day, 5.3 MJ/kg milk **Beef daily gain assuming: 300 kg beef steer, and 6.6 kg DMI. Maintenance=35 MJ/day, 40 MJ/kg gain		WSC (% DM)	17.1
		ME (MJ/kg DM)	11.4