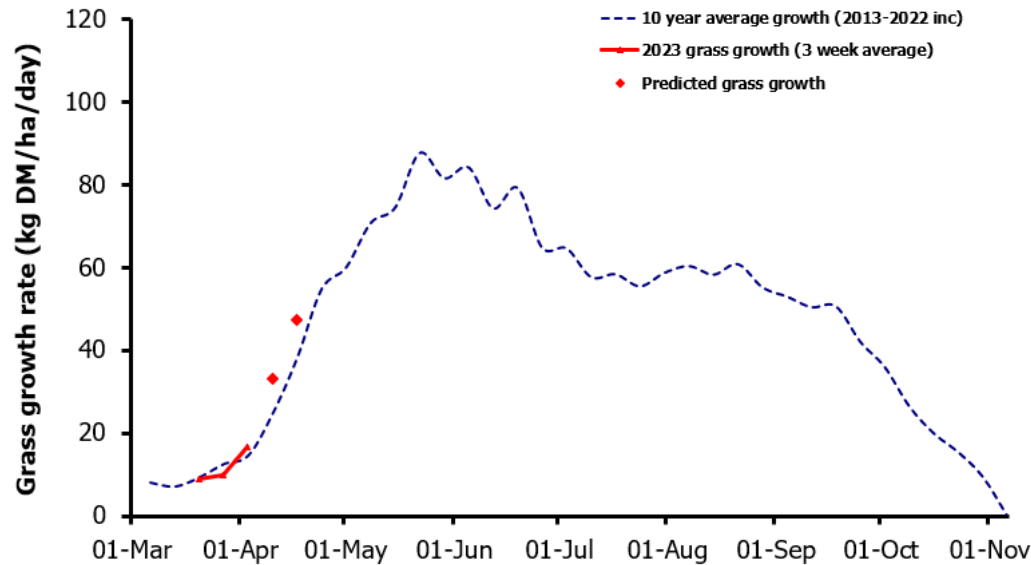
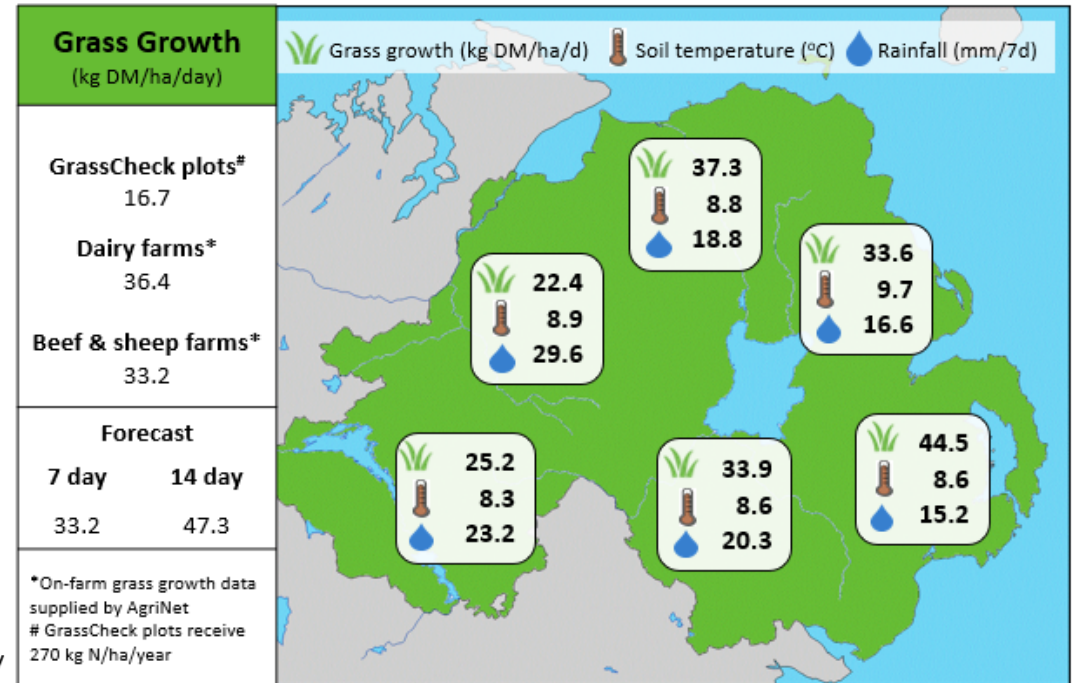


Week Beginning 3rd April 2023



MANAGEMENT NOTES:

- Grass growth is forecast to increase dramatically over the next fortnight.
- For those farms which have a limited area grazed to date, this will create a big challenge to establish a good grazing wedge and maintain grass quality.
- In this situation, maximise grazing demand as conditions improve where possible, targeting drier areas and lowers covers to get a larger area grazed.
- If a large proportion of the first rotation has been grazed, consider starting the second rotation if the first paddocks grazed are above 2,700 kg DM/ha.
- Measure grass on a weekly basis and have an accurate measure of demand.
- It is impossible to make good grazing decisions when standing on concrete.
- With current grass quality, grazed grass is a valuable resource



Value of Grass		Grass Quality	
Dairy – maintenance plus (M+) (kg/cow/day)*	19.8	DM (%)	21.4
Growing animals – daily live weight gain (kg/head/day)**	1.11	CP (% DM)	17.4
*M+ calculated assuming: 650kg cow, and 15 kg DMI. Maintenance=75 MJ/day, 5.3 MJ/kg milk **Beef daily gain assuming: 300 kg beef steer, and 6.6 kg DMI. Maintenance=35 MJ/day, 40 MJ/kg gain		WSC (% DM)	17.7
		ME (MJ/kg DM)	12.0