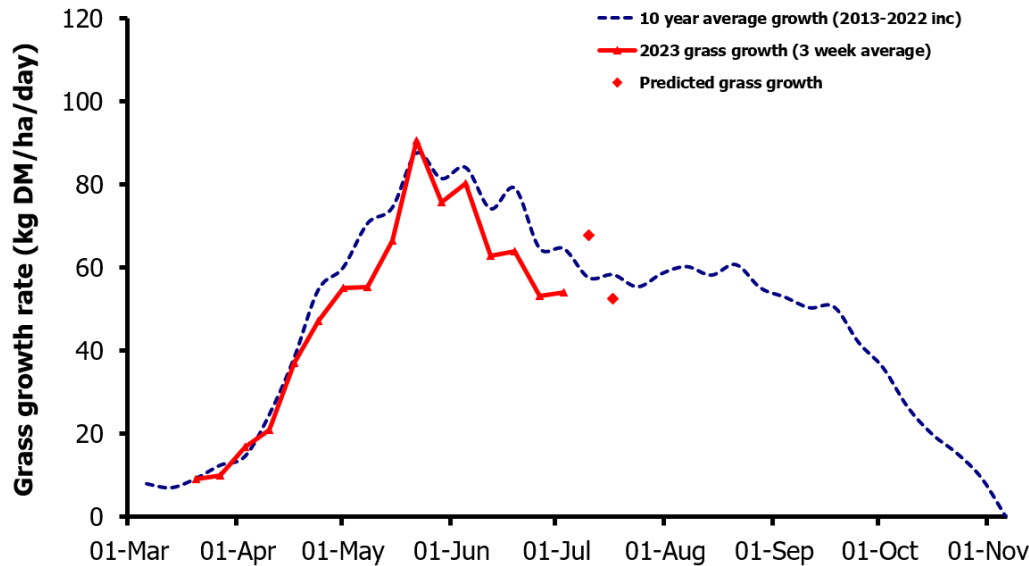
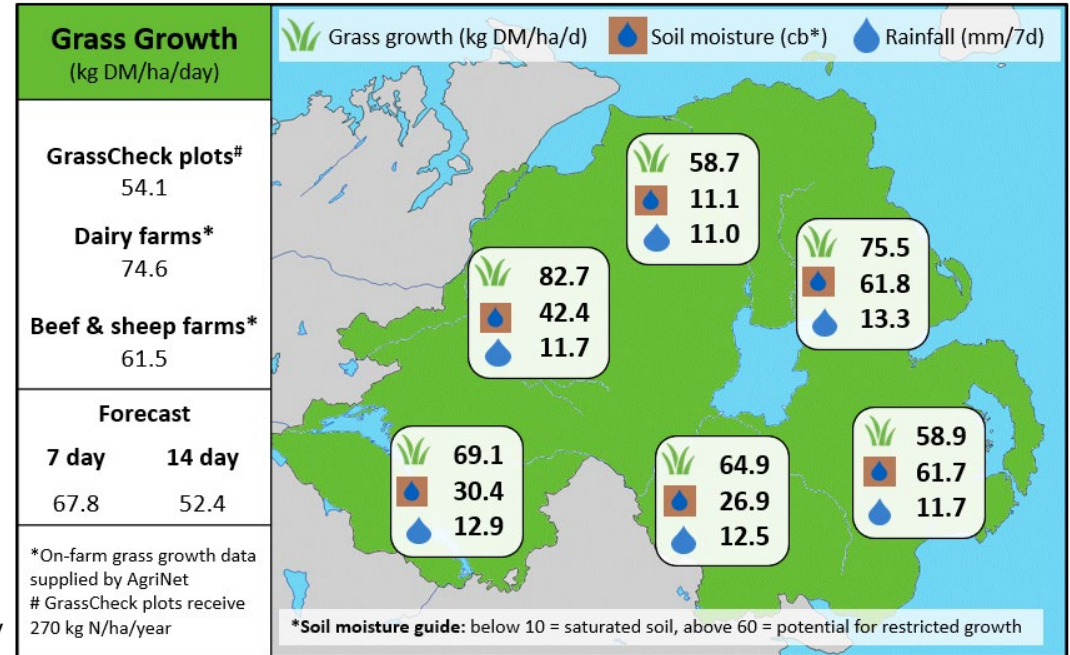


## Week Beginning 3<sup>rd</sup> July 2023



### MANAGEMENT NOTES:

- Grass growth has now risen on most farms and is close or above the long term average – especially in Antrim and Tyrone.
- Covers can build quickly with demand reducing in autumn calving dairy herds as dry cows are removed from the grazing platform.
- Measure covers regularly and remove surpluses as big bales.
- Grass quality has changed with DM down and CP up. Ensure area allocations reflect this to maintain high grass dry matter intakes.
- Top paddocks after grazing if quality has fallen with dry weather.



Value of Grass		Grass Quality	
Dairy – maintenance plus (M+) (kg/cow/day)*	16.7	DM (%)	19.2
Growing animals – daily live weight gain (kg/head/day)**	0.92	CP (% DM)	19.1
*M+ calculated assuming: 650kg cow, and 15 kg DMI. Maintenance=75 MJ/day, 5.3 MJ/kg milk **Beef daily gain assuming: 300 kg beef steer, and 6.6 kg DMI. Maintenance=35 MJ/day, 40 MJ/kg gain		WSC (% DM)	11.4
		ME (MJ/kg DM)	10.9