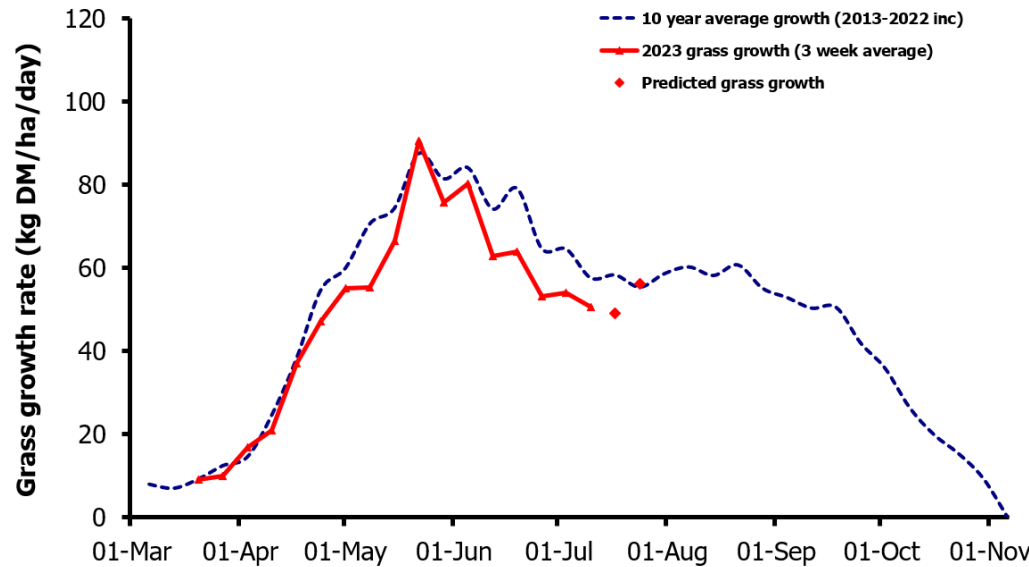
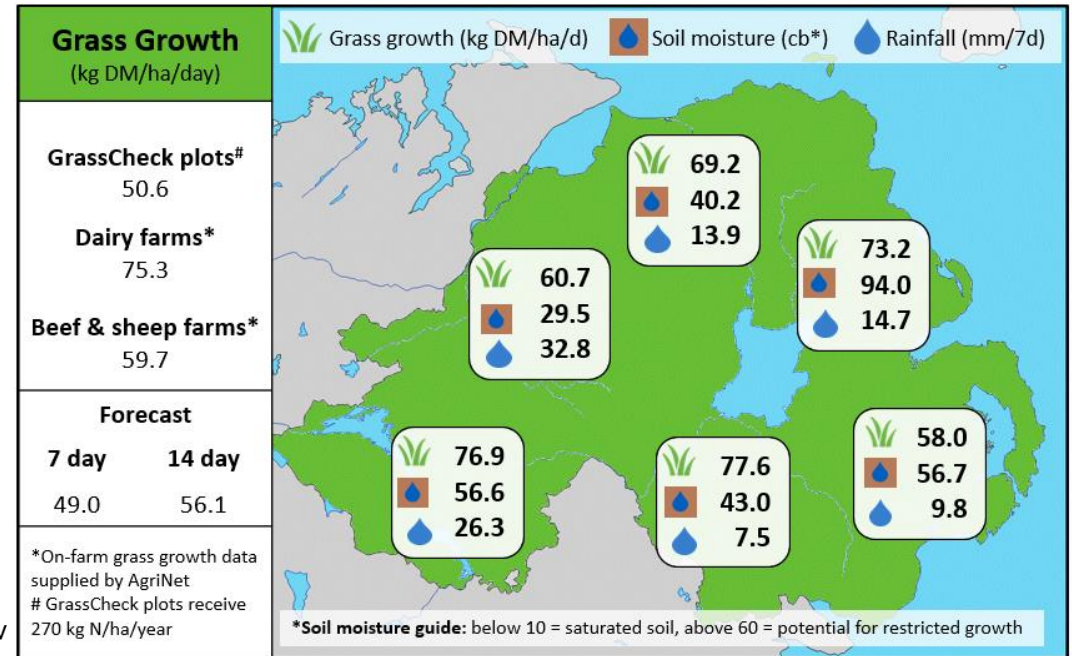


## Week Beginning 10<sup>th</sup> July 2023



### MANAGEMENT NOTES:

- Grass growth forecast is below the LT av. for the next 7 days at 49 kg DM/ha
- Grass quality is below normal on many farms and lower grass DM (%) will compound this issue by reducing animals dry matter intakes (DMI's).
- Despite the recent heavy showers, some farms continue to suffer from soil moisture deficits and reduced growth as a result. Measure weekly to manage.
- Target clean outs as much as possible over the next few weeks, both by grazing, topping and removing surplus as bales where possible, before starting to think about building grass covers for the autumn grazing rotations.
- Reduce chemical N applications now to half rate on paddocks with a good clover content (>20%), as established clover should be providing available N.



Value of Grass		Grass Quality	
Dairy – maintenance plus (M+) (kg/cow/day)*	17.3	DM (%)	17.8
Growing animals – daily live weight gain (kg/head/day)**	0.96	CP (% DM)	18.3
*M+ calculated assuming: 650kg cow, and 15 kg DMI. Maintenance=75 MJ/day, 5.3 MJ/kg milk **Beef daily gain assuming: 300 kg beef steer, and 6.6 kg DMI. Maintenance=35 MJ/day, 40 MJ/kg gain		WSC (% DM)	12.5
		ME (MJ/kg DM)	11.1