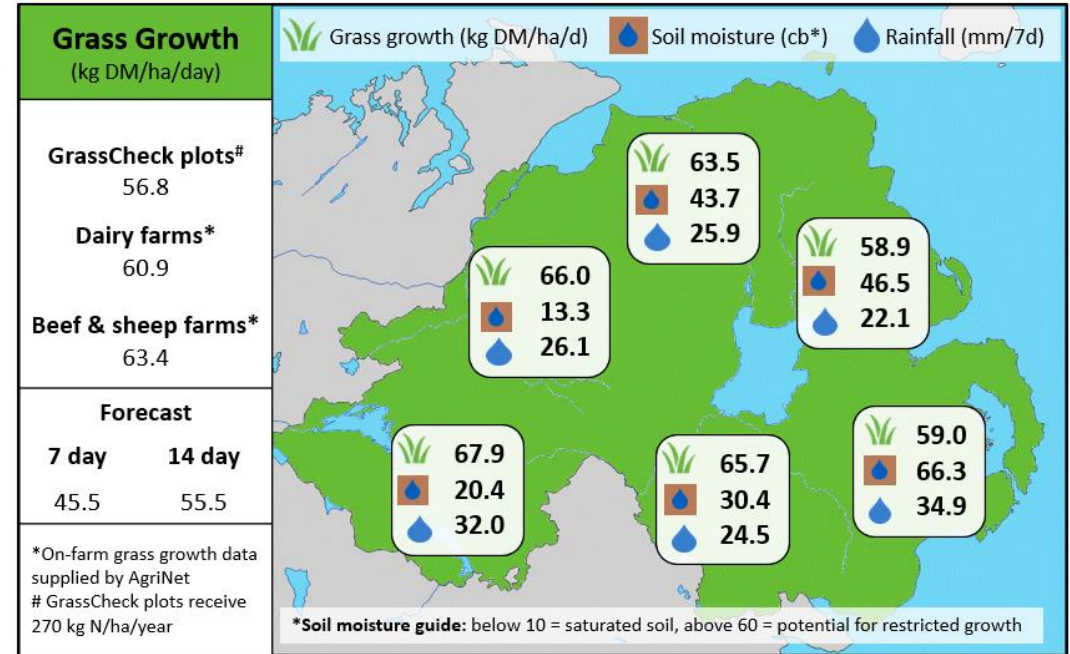
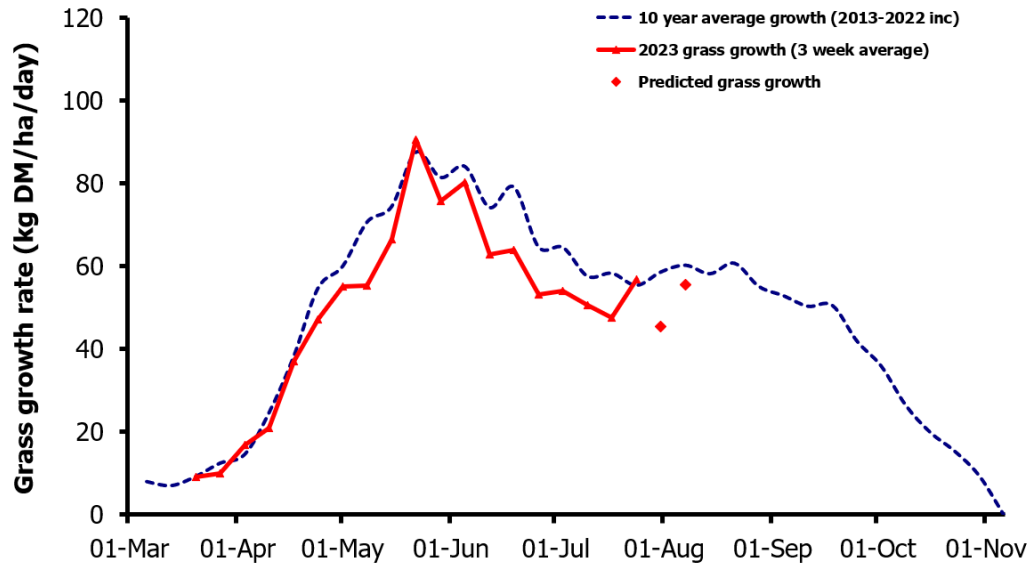


Week Beginning 24th July 2023



MANAGEMENT NOTES:

- Grass DM remains low and animals will require more grass to satisfy them.
- High rainfall over the past week will have made grazing conditions difficult for many. Use wet weather grazing techniques such as spur roads, 12-hour allocations and on-off grazing to reduce poaching and get better cleanouts.
- Planning for extending the grazing season should begin now. Before beginning to build covers and increase rotation length at the end of August, swards should be clean to the base of the sward and free from dead material.
- Assess grazing infrastructure weaknesses highlighted by the recent wet weather and make any necessary upgrades to help improve management in the autumn, eg. extra entry/exit points, additional spur roads & water access.

Value of Grass		Grass Quality	
Dairy – maintenance plus (M+) (kg/cow/day)*	17.5	DM (%)	16.3
Growing animals – daily live weight gain (kg/head/day)**	0.97	CP (% DM)	18.0
*M+ calculated assuming: 650kg cow, and 15 kg DMI. Maintenance=75 MJ/day, 5.3 MJ/kg milk **Beef daily gain assuming: 300 kg beef steer, and 6.6 kg DMI. Maintenance=35 MJ/day, 40 MJ/kg gain		WSC (% DM)	12.3
		ME (MJ/kg DM)	11.2