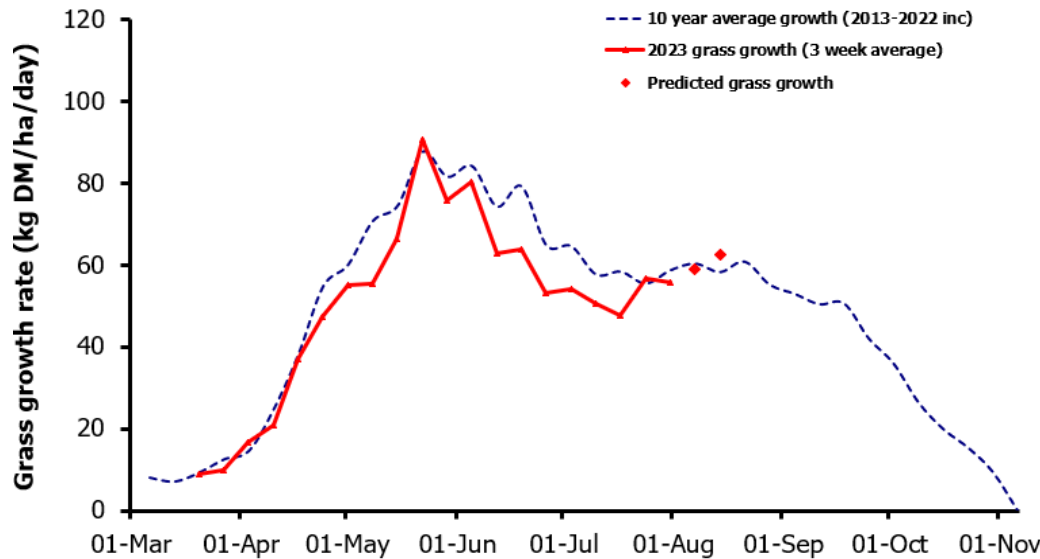
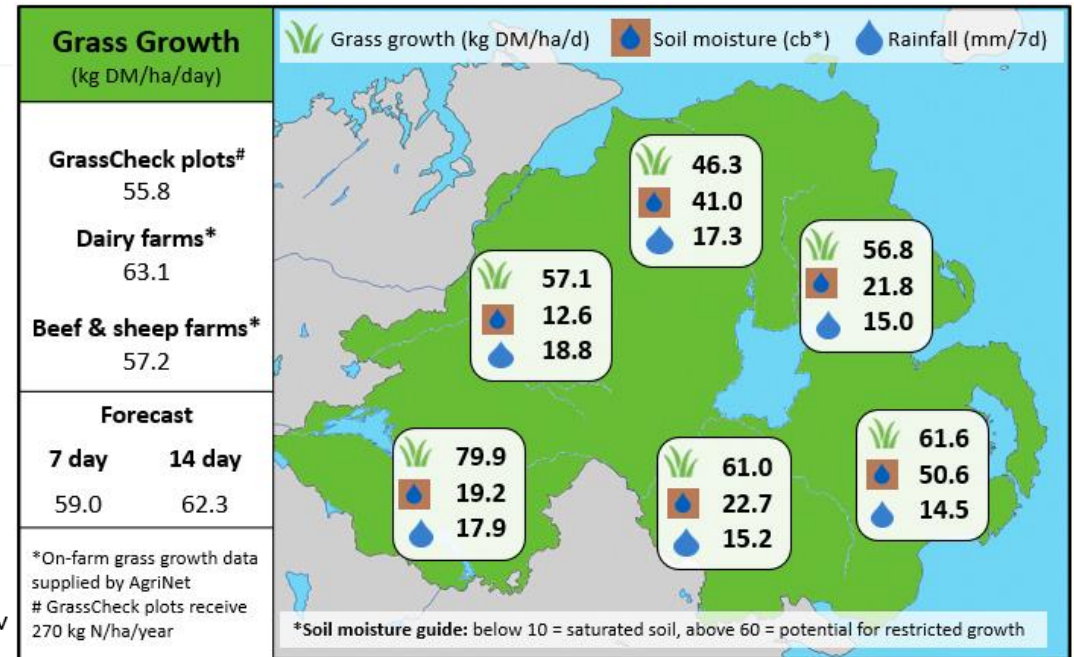


## Week Beginning 31<sup>st</sup> July 2023



### MANAGEMENT NOTES:

- Total av. grass growth to the end of July 2023 was 7.06 T DM/ha, 88.6% of the LT. av. for the same period, which is 7.97 T DM/ha. This will vary between counties.
- The large amount of consistent rainfall in July has led to difficult conditions for many, especially on low-lying or heavy soils, in terms of grazing and silage harvesting.
- Remember this will hopefully be temporary and land will dry out if given a chance.
- Use wet weather grazing techniques including on-off grazing, spur roads and shorter allocations. If animals must be housed due to ground conditions temporarily, feed your best quality silage and extra meal if necessary. Measure grass weekly and access ground conditions regularly to resume full time grazing as soon as possible.
- August is key for grass growth. Start to build grass covers now, especially if higher stocked



Value of Grass		Grass Quality	
Dairy – maintenance plus (M+) (kg/cow/day)*	14.1	DM (%)	16.0
Growing animals – daily live weight gain (kg/head/day)**	0.96	CP (% DM)	17.8
*M+ calculated assuming: 650kg cow, and 13.5 kg DMI. Maintenance=75 MJ/day, 5.3 MJ/kg milk **Beef daily gain assuming: 300 kg beef steer, and 6.6 kg DMI. Maintenance=35 MJ/day, 40 MJ/kg gain		WSC (% DM)	12.7
		ME (MJ/kg DM)	11.1