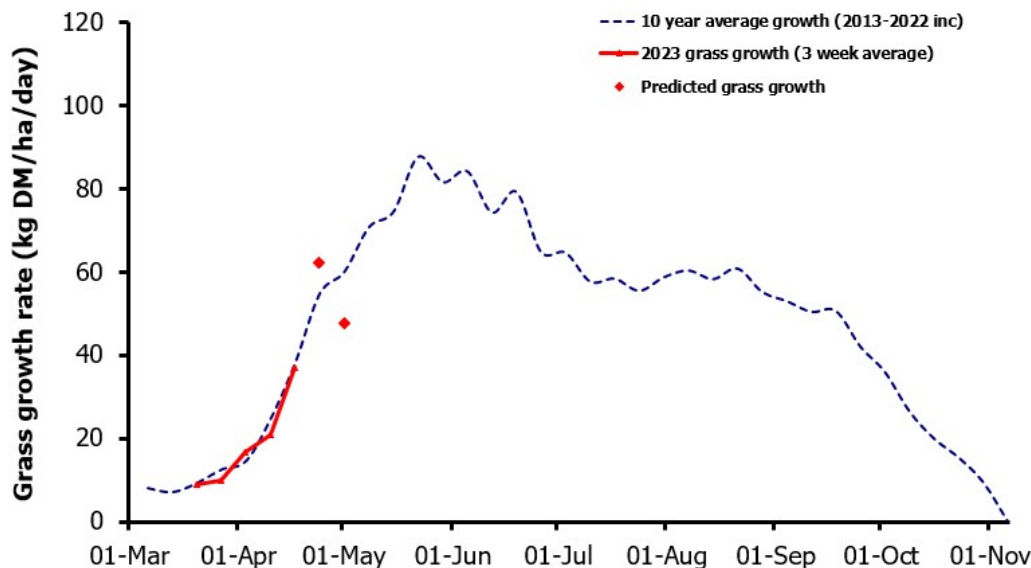
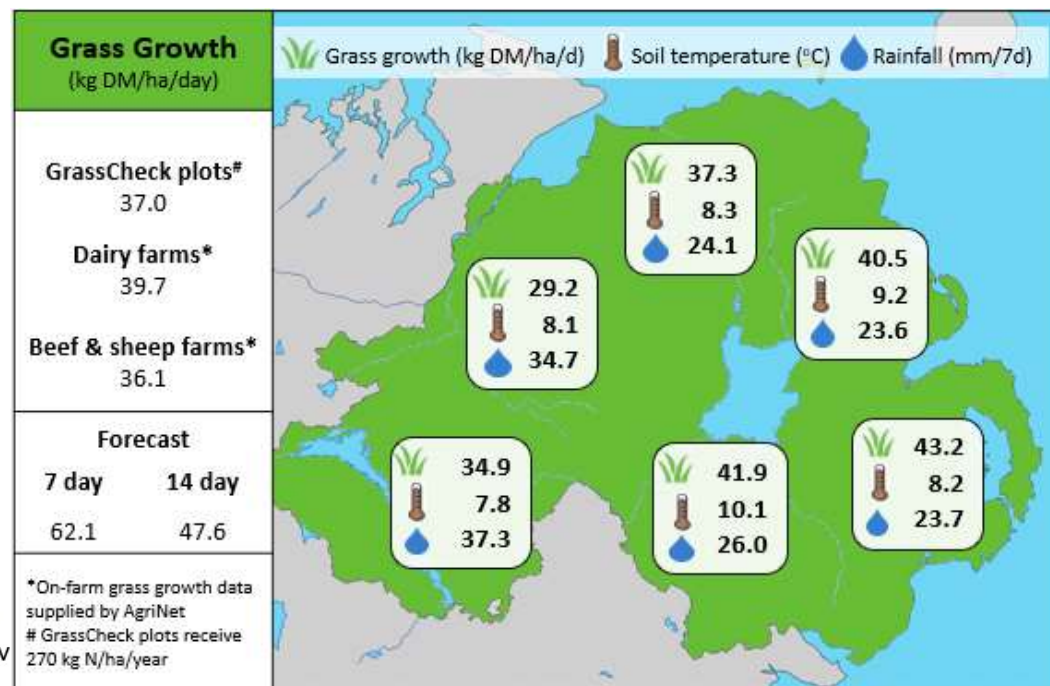


Week Beginning 17th April 2023



MANAGEMENT NOTES:

- Grass growth is predicted to rise over the next 7 days, before taking a hit the week after, due to colder conditions forecast to move in once again.
- Ground conditions are still tricky in places, making back fencing and using spur roads still necessary to keep grass in cow's diet and reduce damage.
- Good grazing infrastructure makes a big difference at times like this to be able to get cows in and out of fields quickly and easily with minimal mess.
- Now is a good time to make a note of improvements that could be made to tracks, fencing and water troughs to utilise more grass and improve cow flow.
- Monitor av. farm cover weekly. Use a grass budgeting tool to allow you to predict the grass wedge forward, to help in decisions with a surplus or deficit.



	Value of Grass	Grass Quality	
Dairy – maintenance plus (M+) (kg/cow/day)*	20.6	DM (%)	20.7
Growing animals – daily live weight gain (kg/head/day)**	1.02	CP (% DM)	19.1
*M+ calculated assuming: 650kg cow, and 15 kg DMI. Maintenance=75 MJ/day, 5.3 MJ/kg milk **Beef daily gain assuming: 300 kg beef steer, and 6.6 kg DMI. Maintenance=35 MJ/day, 40 MJ/kg gain		WSC (% DM)	15.6
		ME (MJ/kg DM)	11.5