



Department of
**Agriculture, Environment
and Rural Affairs**

www.daera-ni.gov.uk



INVESTOR IN PEOPLE

Northern Ireland

Agricultural Market Report

A National Statistics Publication

Volume 80 Quarter 4

(2017)

Enquiries to : William Taylor
Economics & Evaluations Branch
Room 817 Dundonald House
Upper Newtownards Road
Ballymiscaw
Belfast BT4 3SB

Telephone (028) 90524640
Email aeb.econstats@daera-ni.gov.uk
Twitter @ DAERAstats

This report is also available Free of
Charge on the Department's website -
www.daera-ni.gov.uk

If you have a hearing difficulty you can contact the
Department via the textphone on (028) 90524420



National Statistics are produced to professional standards as set out in the National Statistics Code of Practice. They undergo regular quality assurance reviews to ensure that they meet customer needs. They are produced free from any political interference. You can find National Statistics on the Internet - go to www.statistics.gov.uk

@ Crown Copyright 2017

A National Statistics publication

1. FINISHED CATTLE (pence per kg deadweight)

Average deadweight prices from meat plants for EU price reporting purposes.

Week ending: 30 Dec 17

Steers	No.	Price	% change from		Young Bulls	No.	Price	% change from	
			23 Dec 17	24 Dec 16				23 Dec 17	24 Dec 16
U2	111	363.90	+1.1%	+2.1%	U2	19	353.10	+1.6%	+5.0%
U3	249	365.10	-0.2%	+1.8%	U3	28	358.10	+0.1%	+3.2%
U4	42	359.20	-2.2%	+1.5%	R2	31	349.80	+0.8%	+0.8%
R3	385	362.40	+0.2%	+1.5%	R3	31	352.10	+0.6%	+1.4%
R4	154	360.30	-0.4%	+0.5%	O2	56	331.40	+1.6%	+3.0%
O3	405	354.50	+0.6%	+2.0%	O3	31	334.20	-0.3%	+1.6%
O4	148	354.90	+0.3%	+1.7%	All Grades	265	338.02	+0.5%	+3.3%
All Grades	1,860	355.41	+0.6%	+1.9%					
Heifers					Cows				
U2	40	361.70	+0.7%	+1.2%	R3	48	308.00	+2.0%	+13.0%
U3	160	366.00	+0.5%	+1.8%	R4	40	305.50	+1.8%	+11.7%
U4	79	360.30	-0.6%	+0.3%	O2	22	277.60	+2.8%	+13.5%
R2	62	360.50	+1.5%	+2.1%	O3	105	278.70	+0.1%	+9.2%
R3	362	361.60	-0.2%	+1.6%	O4	54	280.90	+0.7%	+9.1%
R4	294	358.30	-0.2%	+1.0%	P2	65	236.40	+1.2%	+10.6%
O2	35	345.20	-0.5%	+2.2%	P3	39	253.90	+0.0%	+8.0%
O3	227	358.40	+1.9%	+2.9%	All Grades	473	273.13	+6.6%	+16.8%
O4	202	355.80	+1.7%	+1.7%					
All Grades	1,582	357.15	+1.1%	+2.1%					

2. FINISHED CLEAN SHEEP (pence per kg deadweight)

Week ending: 30 Dec 17

Average deadweight prices from both liveweight & deadweight centres.

Lambs	3,696	379.89	+3.5%	-
Hoggets	-	-	-	-
	3,696	379.89	+3.5%	-

3. FINISHED CLEAN PIGS (pence per kg deadweight)

Week ending: 30 Dec 17

Estimated average deadweight prices.

147.93 -0.2% +3.8%

4. BROILER CHICKENS (pence per kg liveweight)

Week ending: 30 Dec 17

Average liveweight producer prices from poultry slaughterers.

75.45 +1.2% +6.5%

5. HAY, STRAW & SILAGE (£ per bale)

Month:

Oct 17

	Price	% change from			Price	% change from	
		Aug 17	Sep 16			Aug 17	Sep 16
Hay (small square)	2.69	+1.9%	+12.1%	Straw (small square)	2.25	+4.7%	+20.3%
Silage	25.50	+12.3%	+64.5%	Straw (large round)	21.10	+12.2%	+50.7%

6. POTATOES (£ per tonne)

Month: Sep 17

Average ex-farm producer prices, including potatoes sold under contract, from a survey of processors & merchants.

	Price	% change from	
		Jul 17	Aug 16
First earlies	139.87	-32.2%	-0.1%
Washing Sample	140.30	-14.6%	-11.2%
Processing	146.94	+2.1%	+5.0%
Merchant trade	-	-	-

7. CEREALS (£ per tonne)

Delivered price as quoted in AHDB NI Market Report.

		% change from	
		23 Dec 17	24 Dec 16
Wheat	-	-	-
Barley	-	-	-

8. BREEDING AND STORE LIVESTOCK (£ per head)

Average producer prices from a panel of livestock marts.

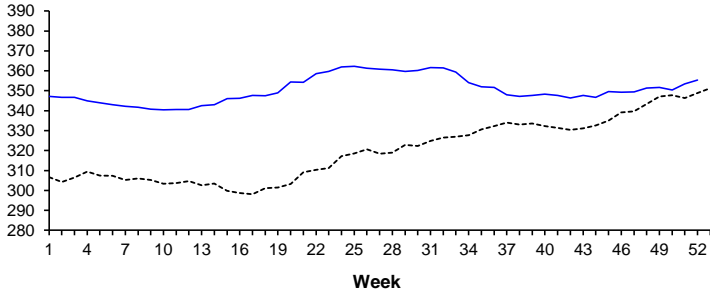
			Week ending: 30 Dec 17		% change from			
			Number	Price Range	Av. Price	23 Dec 17	24 Dec 16	
STORE CATTLE	Steers:	150-300 kg	-	-	-	-	-	
		300-400 kg	-	-	-	-	-	
	Heifers:	400-500 kg	-	-	-	-	-	
		Over 500 kg	-	-	-	-	-	
		150-300 kg	-	-	-	-	-	
SUCKLED CALVES	Steers:	300-400 kg	-	-	-	-	-	
		400-500 kg	-	-	-	-	-	
	Heifers:	Over 500 kg	-	-	-	-	-	
		Under 200 kg	-	-	-	-	-	
BREEDING CATTLE	Dairy:	Over 200 kg	-	-	-	-	-	
		Under 200 kg	-	-	-	-	-	
		Over 200 kg	-	-	-	-	-	
	Sucklers:	Cows/heifers in milk	-	-	-	-	-	
		Cows in calf	-	-	-	-	-	
		Springing heifers	-	-	-	-	-	
OTHER CATTLE	Dairy:	Cows/heifers & calf at foot	-	-	-	-	-	
		Cows in calf	-	-	-	-	-	
		Springing heifers	-	-	-	-	-	
BREEDING SHEEP	Ewes/Hoggets:	Cull cows for slaughter	-	-	-	-	-	
		Dropped calves for rearing	-	-	-	-	-	
	Ewe Lambs:	Blackface/Blackface cross	-	-	-	-	-	
		Other Breeds	-	-	-	-	-	
	Ewes/Hoggets with Lamb(s) at Foot:	Blackface/Blackface cross	-	-	-	-	-	
		Other Breeds	-	-	-	-	-	
	OTHER SHEEP	Cull Ewes:	Blackface/Blackface cross	-	-	-	-	-
			Other Breeds	-	-	-	-	-
	Cull rams	-	-	-	-	-		
	Store lambs	-	-	-	-	-		

**Livestock Markets
closed for the
Hoilday Period**

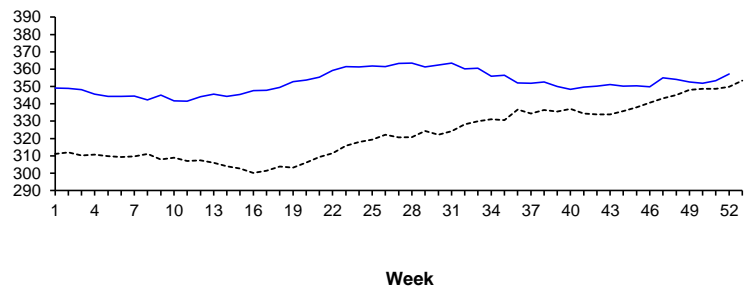
PRICE TRENDS 2016-2017

----- 2016 ———— 2017

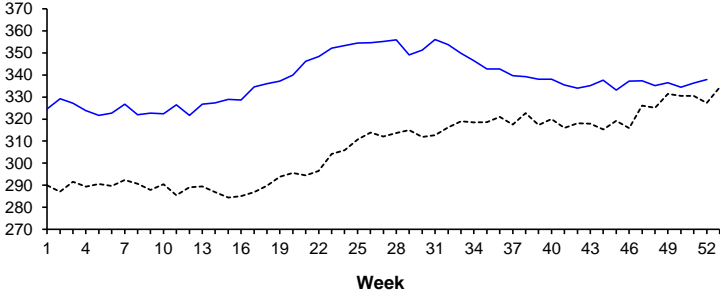
FINISHED STEERS - Deadweight prices (pence/kg)



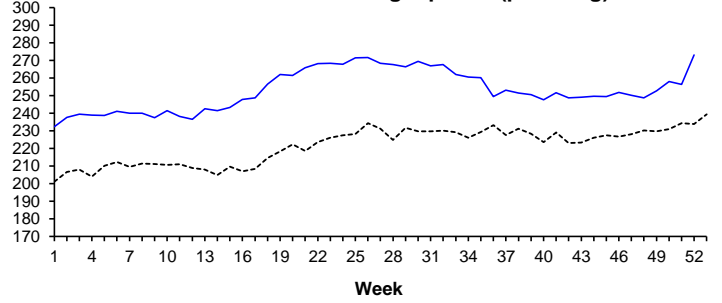
FINISHED HEIFERS-Deadweight prices (pence/kg)



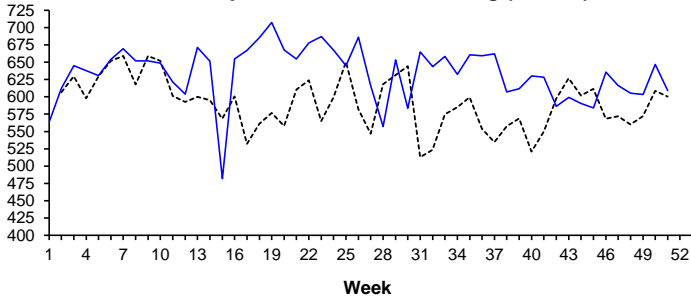
FINISHED YOUNG BULLS - Deadweight prices (pence/kg)



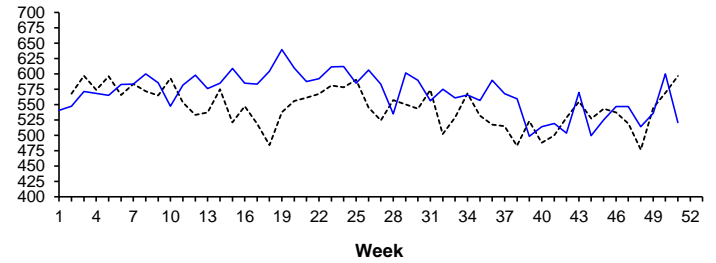
FINISHED COWS - Deadweight prices (pence/kg)



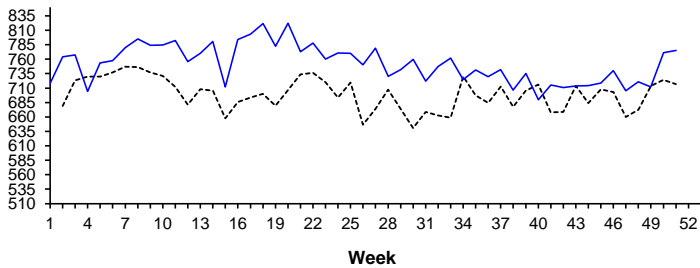
STORES - Av.price of steers 150-300 kg (£/head)



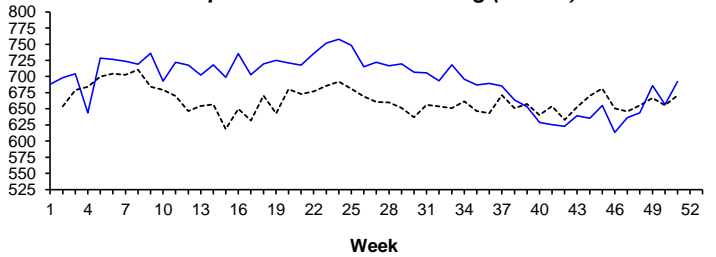
STORES - Av.price of heifers 150-300 kg (£/head)



STORES - Av.price of steers 300-400 kg (£/head)

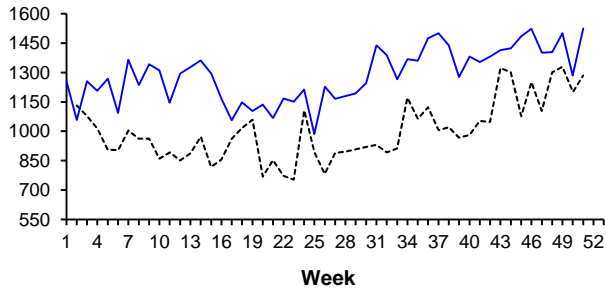


STORES - Av.price of heifers 300-400 kg (£/head)

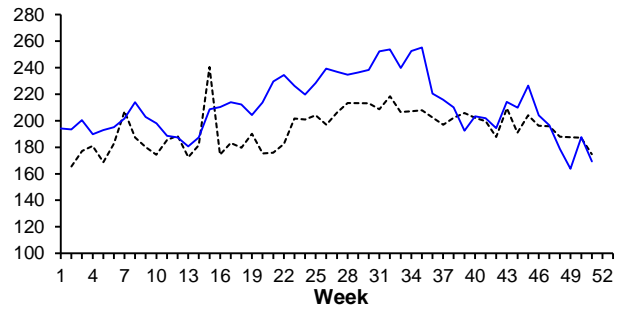




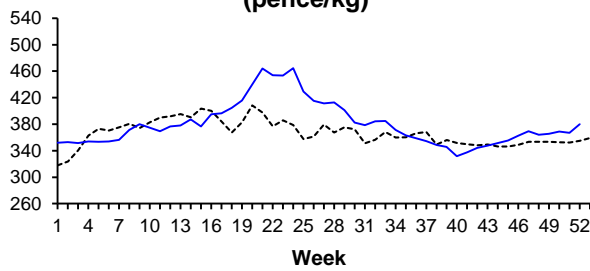
DAIRY COWS & HEIFERS IN MILK (£/head)



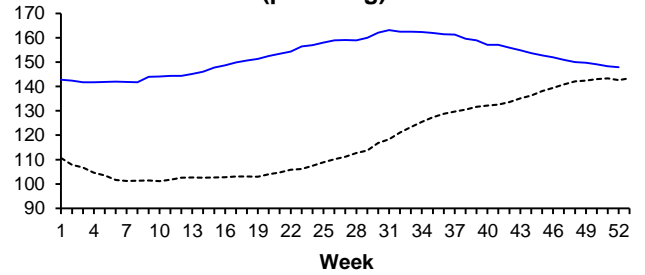
DROPPED CALVES (£/head)



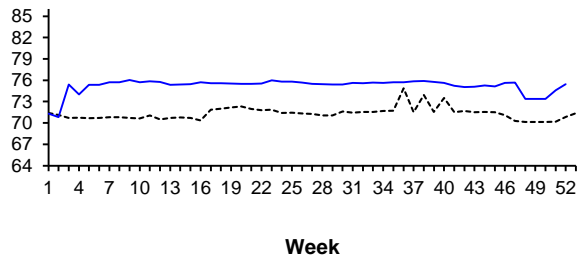
FINISHED SHEEP - Deadweight price (pence/kg)



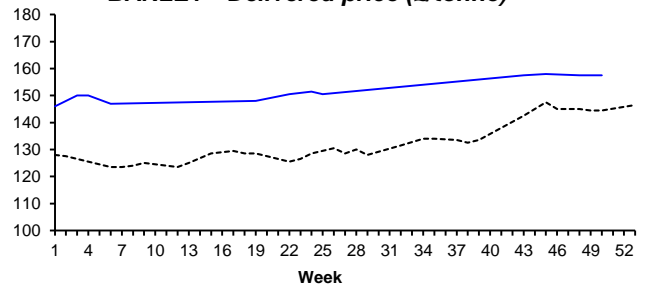
FINISHED PIGS - Deadweight price (pence/kg)



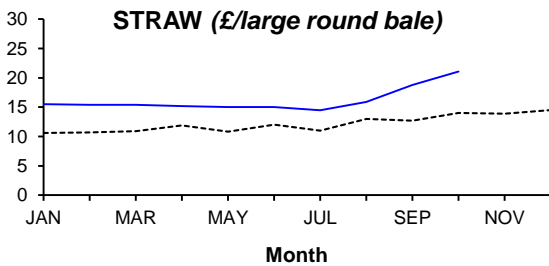
BROILER CHICKENS - Liveweight price (pence/kg)



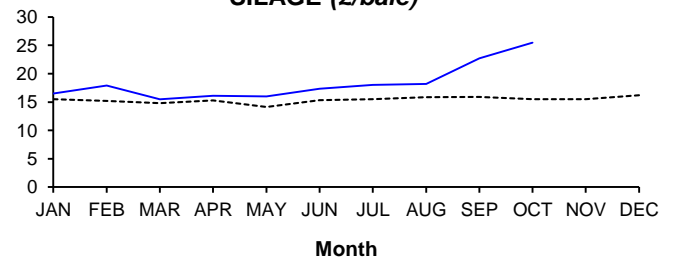
BARLEY - Delivered price (£/tonne)



STRAW (£/large round bale)



SILAGE (£/bale)



Notes : All graphs are based on average prices published in DAERA's weekly Agricultural Market Report.
All week numbers are based on a calendar year.