



Department of
**Agriculture, Environment
and Rural Affairs**
www.daera-ni.gov.uk



INVESTOR IN PEOPLE

Northern Ireland

Agricultural Market Report

A National Statistics Publication

Volume 85 Quarter 4 (2022)

Enquiries to : Paul Keatley
Economics & Evaluations Branch
Room 555 Dundonald House
Upper Newtownards Road
Ballymiscaw
Belfast BT4 3SB

Telephone (028) 90524640

Email aeb.econstats@daera-ni.gov.uk

Twitter @ DAERAstats

This report is also available Free of
Charge on the Department's website -
www.daera-ni.gov.uk

If you have a hearing difficulty you can contact the
Department via the textphone on (028) 90524420



National Statistics are produced to professional standards as set out in the National Statistics Code of Practice. They undergo regular quality assurance reviews to ensure that they meet customer needs. They are produced free from any political interference. You can find National Statistics on the Internet - go to www.statistics.gov.uk

@ Crown Copyright 2023

A National Statistics publication

1. FINISHED CATTLE (pence per kg deadweight)

Average deadweight prices from meat plants for EU price reporting purposes.

Week ending: 31 Dec 22

Steers	No.	Price	% change from		Young Bulls	No.	Price	% change from	
			24 Dec 22	01 Jan 22				24 Dec 22	01 Jan 22
U2	70	456.80	+1.5%	+12.5%	U2	48	443.20	+0.7%	+13.7%
U3	151	458.90	+1.6%	+12.3%	U3	18	444.10	+1.7%	+14.0%
U4	26	454.40	+1.3%	+12.6%	R2	49	437.40	+1.3%	+13.8%
R3	260	455.00	+1.6%	+12.2%	R3	30	441.80	+1.9%	+13.3%
R4	77	454.00	+1.9%	+12.5%	O2	43	424.40	+3.5%	+14.9%
O3	419	442.90	+1.9%	+12.9%	O3	48	426.00	+1.9%	+14.5%
O4	95	440.10	+1.6%	+12.4%	All Grades	323	429.08	+3.0%	+12.6%
All Grades	1,528	443.98	+1.7%	+12.0%					
Heifers					Cows				
U2	45	457.10	+1.1%	+11.6%	R3	19	385.00	+2.3%	+21.3%
U3	153	459.70	+1.2%	+12.1%	R4	19	378.10	+1.0%	+19.0%
U4	92	456.30	+1.6%	+12.8%	O2	39	356.90	+4.2%	+23.5%
R2	51	451.60	+1.9%	+11.2%	O3	82	361.60	+2.2%	+20.6%
R3	287	454.90	+1.2%	+12.2%	O4	44	363.70	+2.2%	+21.1%
R4	262	452.30	+1.4%	+12.5%	P2	143	318.20	+1.5%	+25.4%
O2	47	437.60	+0.9%	+16.0%	P3	72	337.60	+1.5%	+21.6%
O3	231	439.50	+0.6%	+11.3%	All Grades	579	335.13	+4.3%	+20.5%
O4	220	440.30	+1.1%	+11.5%					
All Grades	1,547	446.58	+1.9%	+12.3%					

2. FINISHED CLEAN SHEEP (pence per kg deadweight)

Week ending: 31 Dec 22

Average deadweight prices from both liveweight & deadweight centres.

Lambs	4,247	534.89	+5.6%	+0.3%
Hoggets	-	-	-	-
	4,247	534.89	+5.6%	+0.3%

3. FINISHED CLEAN PIGS (pence per kg deadweight)

Week ending: 31 Dec 22

Estimated average deadweight prices.

200.17 -0.0% +38.4%

4. BROILER CHICKENS (pence per kg liveweight)

Week ending: 31 Dec 22

Average liveweight producer prices from poultry slaughterers (All bird types)

127.20 -0.3% +23.7%

5. HAY, STRAW & SILAGE (£ per bale)

Month:

Nov 22

	Price	% change from			Price	% change from	
		Oct 22	Nov 21			Oct 22	Nov 21
Hay (small square)	3.25	+3.2%	+11.7%	Straw (small square)	2.82	+0.0%	+13.7%
Silage	26.63	+5.5%	+42.4%	Straw (large round)	20.75	+1.2%	+4.3%

6. POTATOES (£ per tonne)

Month: Oct 22

Average ex-farm producer prices, including potatoes sold under contract, from a survey of processors & merchants.

	Price	% change from	
		Sep 22	Oct 21
First earlies	-	-	-
Washing Sample	233.11	+8.2%	+28.7%
Processing	198.04	-0.1%	+16.8%
Merchant trade	-	-	-

7. CEREALS (£ per tonne)

Delivered price as quoted in AHDB NI Market Report.

	Price	% change from	
		24 Dec 22	01 Jan 22
Wheat	-	-	-
Barley	-	-	-

8. BREEDING AND STORE LIVESTOCK (£ per head)

Average producer prices from a panel of livestock marts.

	Number	Price Range	Av. Price	% change from	
				24 Dec 22	01 Jan 22
STORE CATTLE					
Steers:					
150-300 kg	-	-	-	-	-
300-400 kg	-	-	-	-	-
400-500 kg	-	-	-	-	-
Over 500 kg	-	-	-	-	-
Heifers:					
150-300 kg	-	-	-	-	-
300-400 kg	-	-	-	-	-
400-500 kg	-	-	-	-	-
Over 500 kg	-	-	-	-	-
SUCKLED CALVES					
Steers:					
Under 200 kg	-	-	-	-	-
Over 200 kg	-	-	-	-	-
Heifers:					
Under 200 kg	-	-	-	-	-
Over 200 kg	-	-	-	-	-
BREEDING CATTLE					
Dairy:					
Cows/heifers in milk	-	-	-	-	-
Cows in calf	-	-	-	-	-
Springing heifers	-	-	-	-	-
Sucklers:					
Cows/heifers & calf at foot	-	-	-	-	-
Cows in calf	-	-	-	-	-
Springing heifers	-	-	-	-	-
OTHER CATTLE					
Cull cows for slaughter	-	-	-	-	-
Dropped calves for rearing	-	-	-	-	-

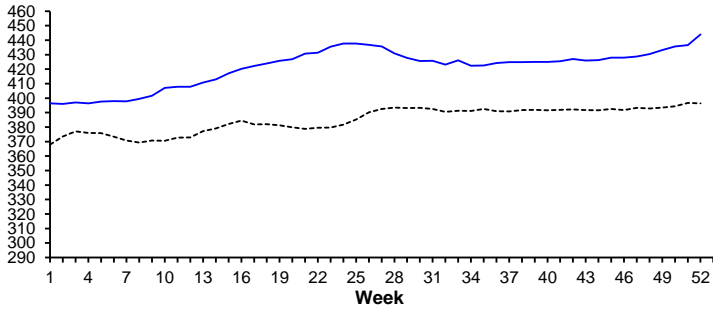
No livestock data to report as marts were closed during the holiday period

BREEDING SHEEP	Ewes/Hoggets:	Blackface/Blackface cross	-	-	-	-
		Other Breeds	-	-	-	-
	Ewe Lambs:	Blackface/Blackface cross	-	-	-	-
		Other Breeds	-	-	-	-
	Ewes/Hoggets with Lamb(s) at Foot:	Blackface/Blackface cross	-	-	-	-
		Other Breeds	-	-	-	-
OTHER SHEEP	Cull Ewes:	Blackface/Blackface cross	-	-	-	-
		Other Breeds	-	-	-	-
	Cull rams		-	-	-	-
	Store lambs		-	-	-	-

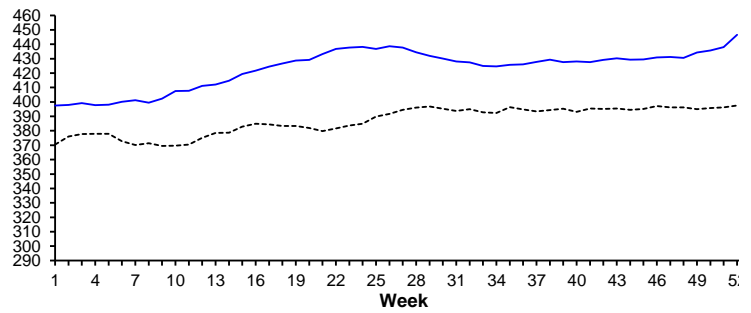
PRICE TRENDS 2021-2022

----- 2021 ———— 2022

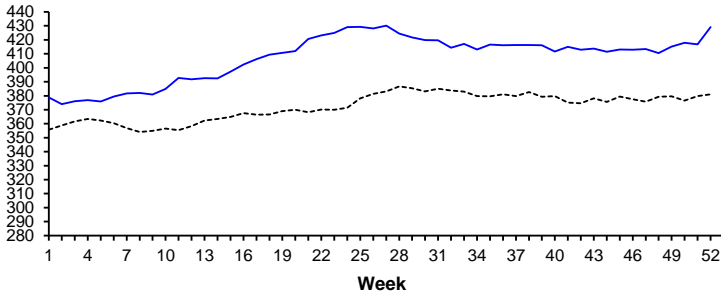
FINISHED STEERS - Deadweight prices (pence/kg)



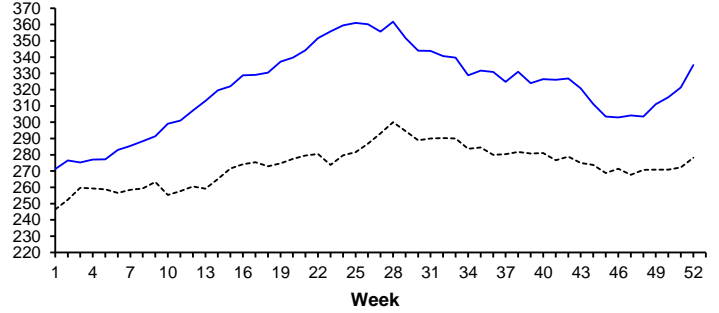
FINISHED HEIFERS-Deadweight prices (pence/kg)



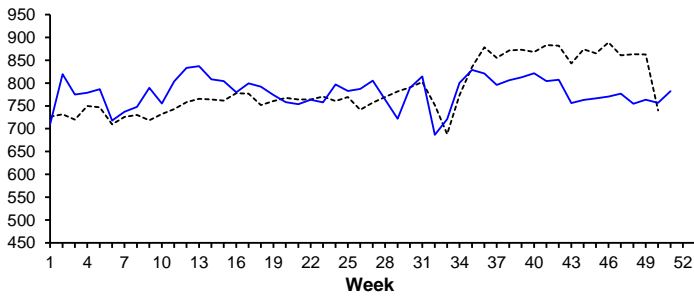
FINISHED YOUNG BULLS - Deadweight prices (pence/kg)



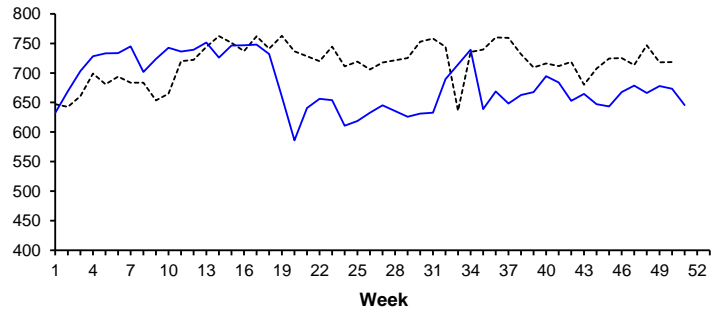
FINISHED COWS - Deadweight prices (pence/kg)



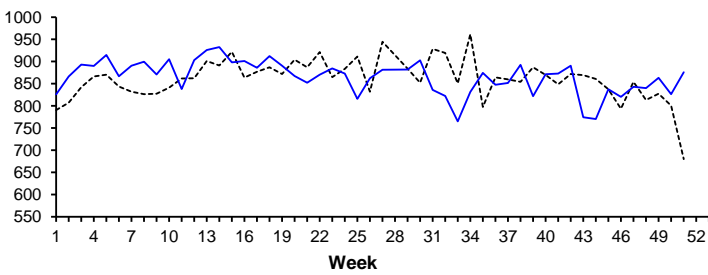
STORES - Av.price of steers 150-300 kg (£/head)



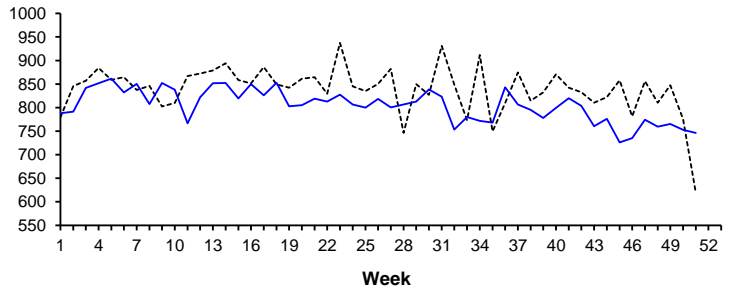
STORES - Av.price of heifers 150-300 kg (£/head)



STORES - Av.price of steers 300-400 kg (£/head)

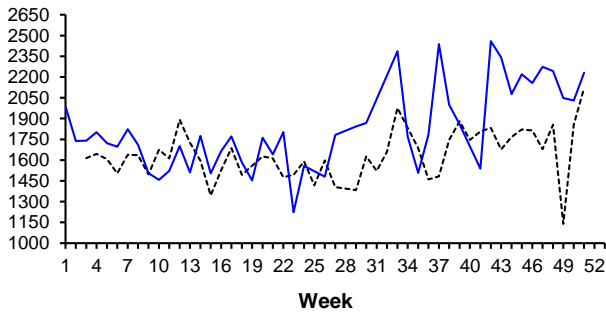


STORES - Av.price of heifers 300-400 kg (£/head)

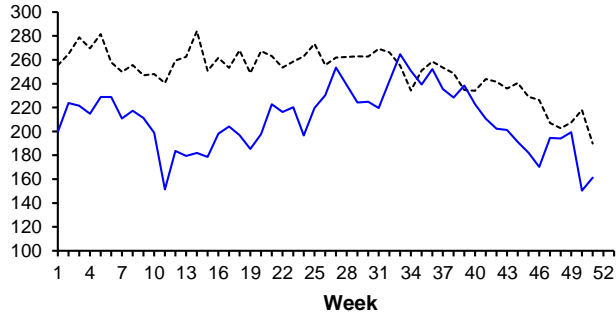


----- 2021 ——— 2022

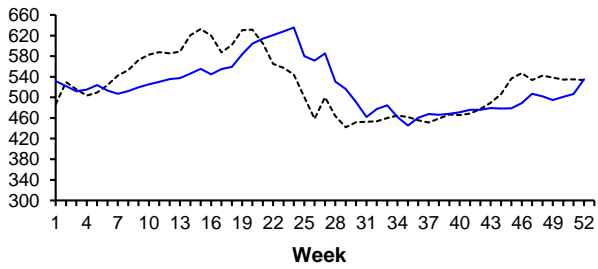
DAIRY COWS & HEIFERS IN MILK (£/head)



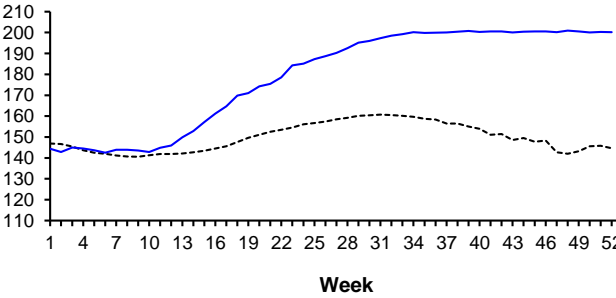
DROPPED CALVES (£/head)



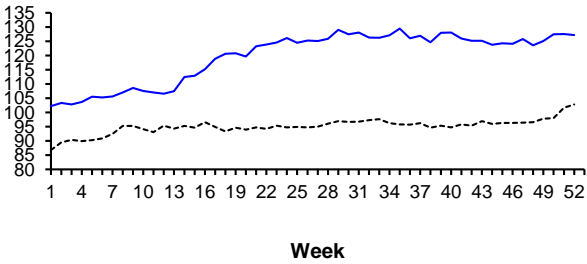
FINISHED SHEEP - Deadweight price (pence/kg)



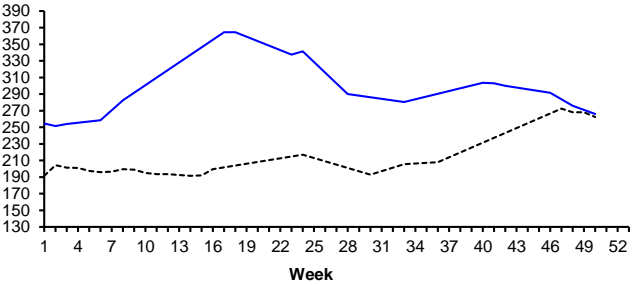
FINISHED PIGS - Deadweight price (pence/kg)



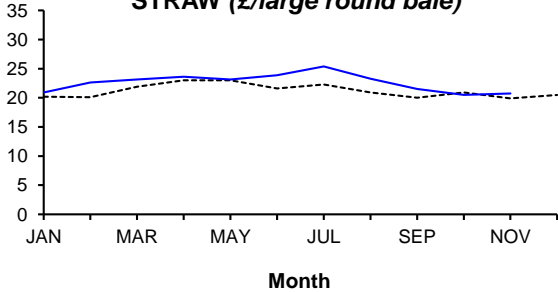
BROILER CHICKENS - Liveweight price (pence/kg)



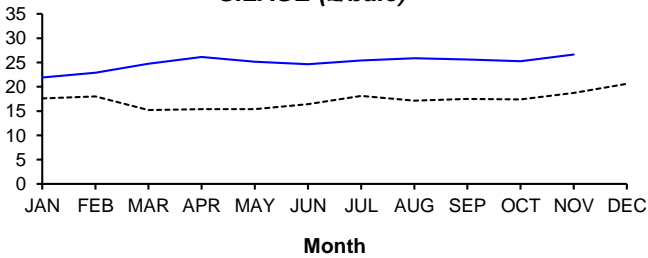
BARLEY - Delivered price (£/tonne)



STRAW (£/large round bale)



SILAGE (£/bale)



Notes : All graphs are based on average prices published in DAERA's weekly Agricultural Market Report.
All week numbers are based on a calendar year.