



Department of  
**Agriculture, Environment  
and Rural Affairs**  
[www.daera-ni.gov.uk](http://www.daera-ni.gov.uk)



INVESTOR IN PEOPLE

# Northern Ireland

## Agricultural Market Report

### A National Statistics Publication

### Volume 86 Quarter 3 ( 2023 )

Enquiries to : Paul Keatley  
Economics & Evaluations Branch  
Room 555 Dundonald House  
Upper Newtownards Road  
Ballymiscaw  
Belfast BT4 3SB

Telephone (028) 90524640  
Email [aeb.econstats@daera-ni.gov.uk](mailto:aeb.econstats@daera-ni.gov.uk)  
Twitter @ DAERAstats  
This report is also available Free of  
Charge on the Department's website -  
[www.daera-ni.gov.uk](http://www.daera-ni.gov.uk)

If you have a hearing difficulty you can contact the  
Department via the textphone on (028) 90524420



National Statistics are produced to professional standards as set out in the National Statistics Code of Practice. They undergo regular quality assurance reviews to ensure that they meet customer needs. They are produced free from any political interference. You can find National Statistics on the Internet - go to [www.statistics.gov.uk](http://www.statistics.gov.uk)

**@ Crown Copyright 2023**

## A National Statistics publication

## 1. FINISHED CATTLE (pence per kg deadweight)

Average deadweight prices from meat plants for EU price reporting purposes.

Week ending: 05 Aug 23

Steers	No.	Price	% change from		Young Bulls	No.	Price	% change from	
			29 Jul 23	06 Aug 22				29 Jul 23	06 Aug 22
U2	129	460.90	-0.7%	+5.3%	U2	135	452.70	-0.5%	+5.2%
U3	175	465.10	-0.8%	+4.7%	U3	63	454.10	-1.0%	+4.7%
U4	22	459.70	-1.7%	+5.7%	R2	197	445.20	-0.5%	+5.1%
R3	450	460.00	-1.4%	+5.4%	R3	88	448.20	-0.3%	+4.8%
R4	114	460.50	-1.1%	+5.2%	O2	145	426.80	-0.7%	+5.6%
O3	558	449.20	-0.9%	+6.1%	O3	63	429.80	-1.5%	+5.0%
O4	113	447.60	-1.5%	+5.9%	All Grades	886	438.79	-0.6%	+4.6%
All Grades	2,382	449.57	-0.9%	+5.6%					
<b>Heifers</b>					<b>Cows</b>				
U2	40	461.70	-0.2%	+5.1%	R3	47	360.30	-1.3%	-7.7%
U3	97	462.60	-1.6%	+4.6%	R4	58	361.70	-1.1%	-6.8%
U4	48	460.80	-1.3%	+5.0%	O2	59	330.60	-4.1%	-10.0%
R2	64	455.40	-0.3%	+5.4%	O3	202	340.70	-2.6%	-8.3%
R3	284	460.40	-0.9%	+5.6%	O4	127	344.50	-1.8%	-7.9%
R4	250	458.30	-1.1%	+5.3%	P2	334	305.60	-2.3%	-8.2%
O2	89	443.60	-1.2%	+5.6%	P3	137	317.90	-3.2%	-10.2%
O3	429	448.40	-0.7%	+5.5%	All Grades	1,551	306.15	-3.9%	-11.0%
O4	242	445.90	-1.1%	+5.1%					
All Grades	1,744	448.63	-1.6%	+4.8%					

## 2. FINISHED CLEAN SHEEP (pence per kg deadweight)

Week ending: 05 Aug 23

Average deadweight prices from both liveweight &amp; deadweight centres.

Lambs	11,192	488.70	-1.0%	+5.8%
Hoggets	-	-	-	-
	11,192	488.70	-1.0%	+5.8%

## 3. FINISHED CLEAN PIGS (pence per kg deadweight)

Week ending: 05 Aug 23

Estimated average deadweight prices.

222.44 +0.1% +12.7%

## 4. BROILER CHICKENS (pence per kg liveweight)

Week ending: 05 Aug 23

Average liveweight producer prices from poultry slaughterers (All bird types)

111.73 -0.7% -12.8%

## 5. HAY, STRAW &amp; SILAGE (£ per bale)

Month: Jun 23

	Price	% change from			Price	% change from	
		May 23	Jun 22			May 23	Jun 22
Hay (small square)	3.28	+0.0%	+1.2%	Straw (small square)	2.73	+0.0%	-5.2%
Silage	27.13	+0.0%	+10.2%	Straw (large round)	21.75	+6.1%	-8.9%

## 6. POTATOES (£ per tonne)

Month: Jun 23

Average ex-farm producer prices, including potatoes sold under contract, from a survey of processors &amp; merchants.

	Price	% change from	
		May 23	Jun 22
First earlies	1056.71	-	-
Washing Sample	-	-	-
Processing	355.71	+51.1%	+157.6%
Merchant trade	-	-	-

## 7. CEREALS (£ per tonne)

Week ending: 05 Aug 23

Delivered price as quoted in AHDB NI Market Report.

		% change from	
		29 Jul 23	06 Aug 22
Wheat	225.00	-	-
Barley	208.00	-	-

## 8. BREEDING AND STORE LIVESTOCK (£ per head)

Week ending: 05 Aug 23

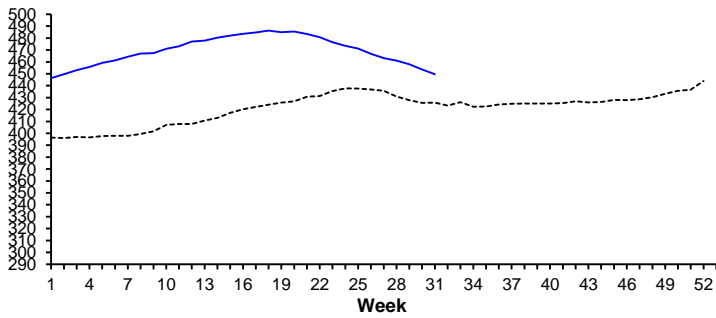
Average producer prices from a panel of livestock marts.

			Number	Price Range	Av. Price	% change from	
						29 Jul 23	06 Aug 22
<b>STORE CATTLE</b>	Steers:	150-300 kg	-	-	-	-	-
		300-400 kg	29	485-1120	864	-6.1%	+3.4%
		400-500 kg	156	600-1500	997	-1.0%	+4.6%
	Heifers:	Over 500 kg	306	770-2160	1,365	+1.6%	+4.6%
		150-300 kg	13	350-880	592	-13.8%	-6.5%
		300-400 kg	51	450-1090	790	-7.0%	-4.0%
		400-500 kg	134	690-1445	1,014	+3.3%	+5.5%
<b>SUCKLED CALVES</b>	Steers:	Over 500 kg	152	900-1790	1,350	-1.9%	+3.1%
		Under 200 kg	24	190-660	329	-21.4%	-
	Heifers:	Over 200 kg	146	200-2000	906	+11.7%	+5.7%
		Under 200 kg	11	260-505	419	-	-
<b>BREEDING CATTLE</b>	Dairy:	Over 200 kg	140	190-1270	787	-0.2%	+0.2%
		Cows/heifers in milk	10	1050-1900	1,447	-	-
		Cows in calf	-	-	-	-	-
	Sucklers:	Springing heifers	-	-	-	-	-
		Cows/heifers & calf at foot	32	700-2000	1,433	-0.0%	-0.7%
		Cows in calf	-	-	-	-	-
<b>OTHER CATTLE</b>	Springing heifers	-	-	-	-	-	
	Cull cows for slaughter	314	76-1935	864	-4.3%	-16.5%	
<b>BREEDING SHEEP</b>	Ewes/Hoggets:	Dropped calves for rearing	950	1-900	252	-10.3%	+14.7%
		Blackface/Blackface cross	8	85-95	90.87	-	-
	Ewe Lambs:	Other Breeds	3521	125-380	188.03	-	-6.0%
		Blackface/Blackface cross	-	-	-	-	-
	Ewes/Hoggets with Lamb(s) at Foot:	Other Breeds	1045	78-175	112.11	-	-1.1%
		Blackface/Blackface cross	-	-	-	-	-
		Other Breeds	-	-	-	-	-
<b>OTHER SHEEP</b>	Cull Ewes:	Blackface/Blackface cross	1084	1-184	75.28	-3.8%	+4.3%
		Other Breeds	916	20-256	94.63	-3.5%	+2.6%
	Cull rams	-	-	-	-	-	
Store lambs	2324	35-95.5	81.65	+1.9%	-2.0%		

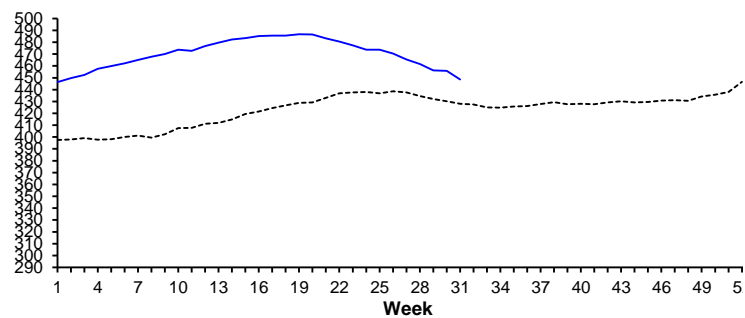
# PRICE TRENDS 2022-2023

----- 2022      ———— 2023

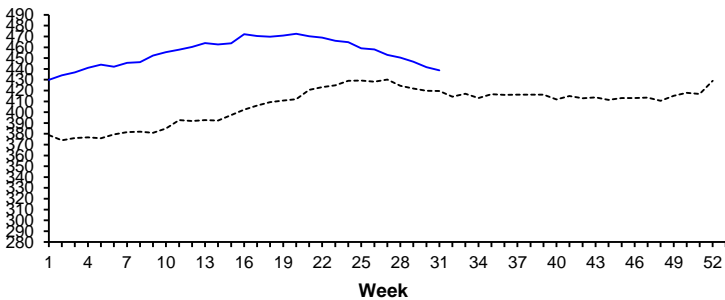
**FINISHED STEERS - Deadweight prices (pence/kg)**



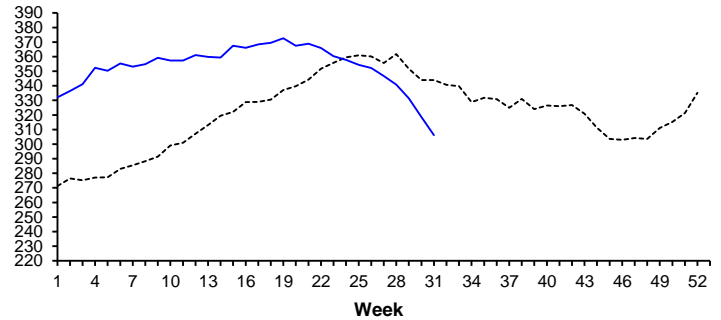
**FINISHED HEIFERS-Deadweight prices (pence/kg)**



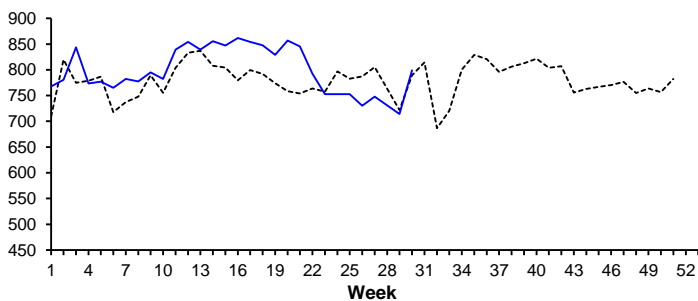
**FINISHED YOUNG BULLS - Deadweight prices (pence/kg)**



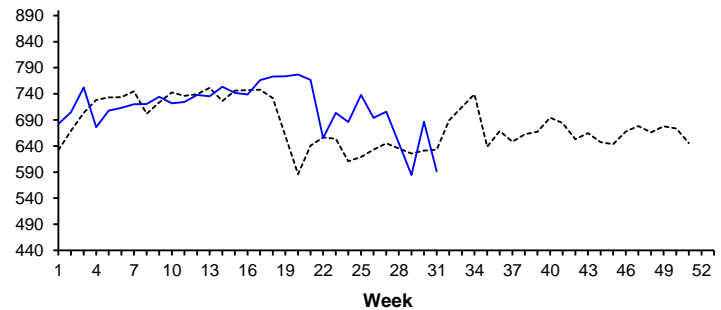
**FINISHED COWS - Deadweight prices (pence/kg)**



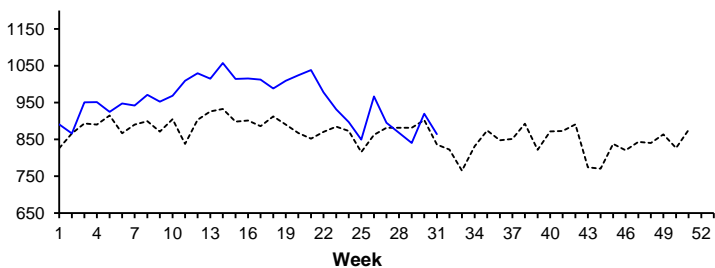
**STORES - Av.price of steers 150-300 kg (£/head)**



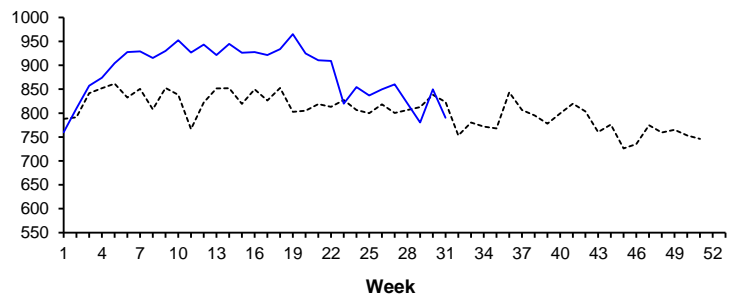
**STORES - Av.price of heifers 150-300 kg (£/head)**



**STORES - Av.price of steers 300-400 kg (£/head)**

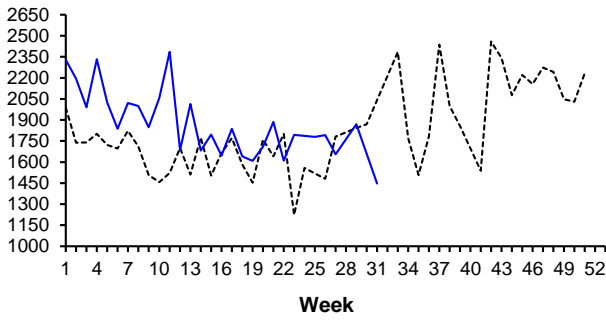


**STORES - Av.price of heifers 300-400 kg (£/head)**

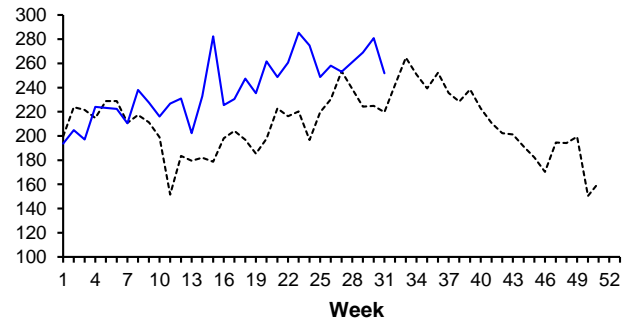




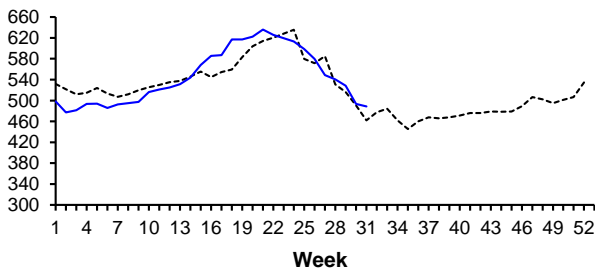
**DAIRY COWS & HEIFERS IN MILK (£/head)**



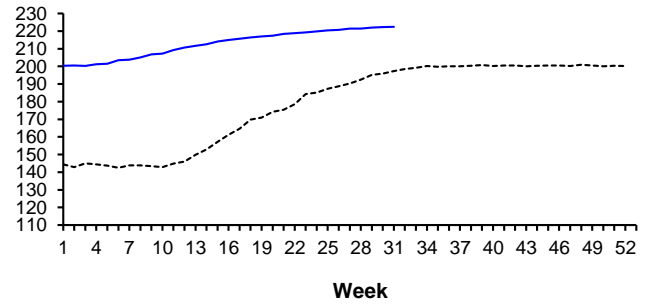
**DROPPED CALVES (£/head)**



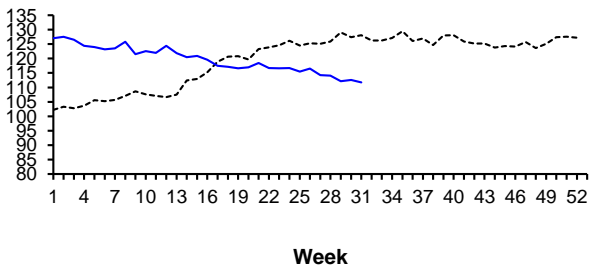
**FINISHED SHEEP - Deadweight price (pence/kg)**



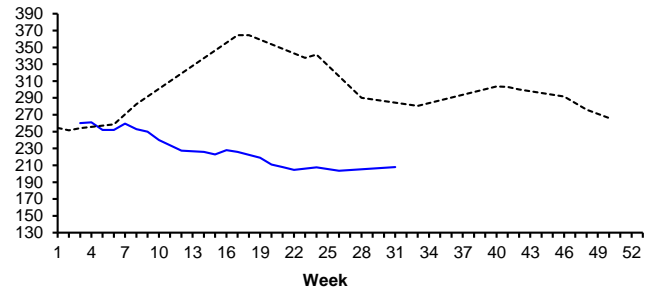
**FINISHED PIGS - Deadweight price (pence/kg)**



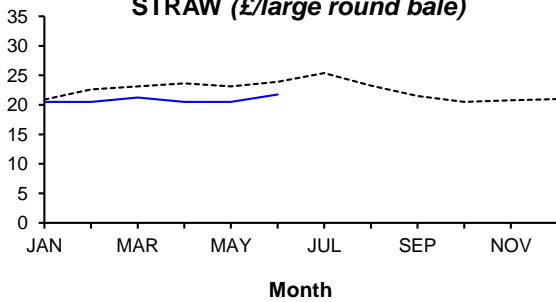
**BROILER CHICKENS - Liveweight price (pence/kg)**



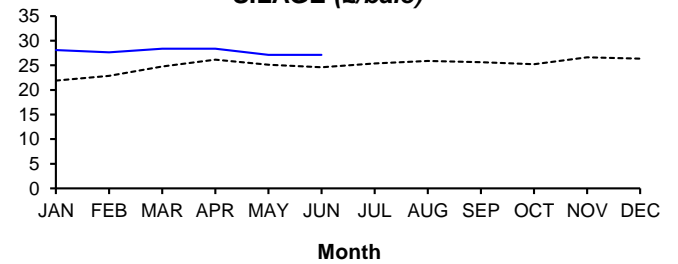
**BARLEY - Delivered price (£/tonne)**



**STRAW (£/large round bale)**



**SILAGE (£/bale)**



Notes : All graphs are based on average prices published in DAERA's weekly Agricultural Market Report.  
All week numbers are based on a calendar year.