

DEADWEIGHT CATTLE TRADE

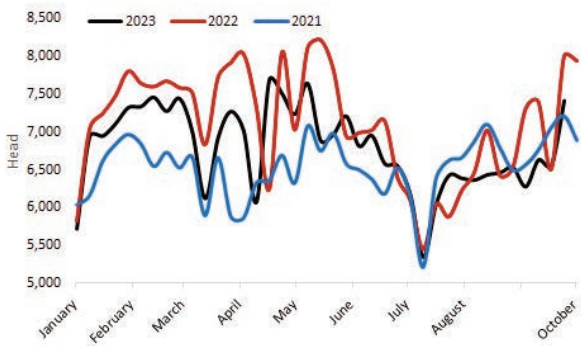
NI FACTORY BASE QUOTES FOR CATTLE

(P/KG DW)	This Week 02/10/23	Next Week 09/10/23
Prime		
U-3	446 - 454p	446 - 456p
R-3	440 - 448p	440 - 450p
O+3	434 - 442p	434 - 444p
P+3	378 - 386p	378 - 388p
Including bonus where applicable		
Cows		
O+3	335 - 360p	324 - 360p

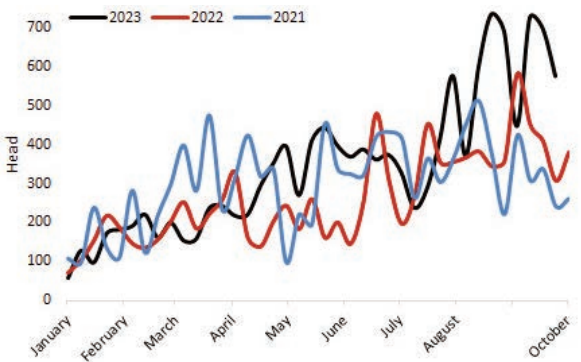
Cow quotes vary depending on weight and grade. Pricing policies vary from plant to plant. Producers are advised to check pricing policies before presenting cattle for slaughter.

Prime Cattle Throughput to date 2021-2023.

Source: DAERA.



Prime Cattle Imports from ROI for direct slaughter to date 2021-2023. Source: DAERA.



REPORTED COW PRICES NI - P/KG

W/E 30/09/23	Weight Bands			
	<220kg	220-250kg	250-280kg	>280kg
P1	239.9	254.2	267.0	282.5
P2	265.9	283.7	308.6	322.7
P3	268.6	303.9	326.1	330.8
O3	-	323.1	337.6	350.1
O4	303.9	-	341.1	350.9
R3	-	-	-	366.8

Deadweight Cattle Trade

Base quotes for in spec U-3 prime cattle ended this week ranging from 446-454p/kg, and 335-360p/kg for O+3 cows. Next week quotes of 446-456p/kg are expected for prime cattle and quotes of 324-360p/kg are expected for O+3 cows with just one plant quoting below 324p/kg.

Last week the local cattle kill increased to a 2023 peak of 7,414, the highest level of prime cattle kill since the middle of May 2023. Cow throughput levels also achieved a calendar year high with 2,496 passing through the NI plants last week, the largest weekly kill of cows since December 2022. Prime cattle imports from ROI for direct slaughter last week came to a total of 577 with an addition of 232 cows, both prime and cow imports for direct slaughter from ROI have slightly declined from the previous week. In NI, deadweight prime cattle trade strengthened with increases reported across all prime cattle categories from the week previous. The average R3 steer prices are up 0.3p/kg to 468.2p/kg, the average R3 heifer price was up 1.7p/kg to 467.5p/kg and lastly an increase of 2.8p/kg brought the average R3 young bull price up to 456.5p/kg. In contrast to a declining deadweight cow trade in NI with the average O3 graded cow back 1.7p/kg to 348.9p/kg.

GB has reported declines over all grades of cows with the O3 graded cow average back 0.7p/kg to 364.3p/kg. Prices of R3 young bulls have dropped across the whole of GB, with the most notable decline of 11p/kg reported in Southern England. The average R3 steer in GB increased 2.2p/kg to 488.5p/kg. The average R3 heifer price increased 2.3 p/kg to 487.1p/kg. Deadweight cattle trade in ROI reported declines in sterling prices across most of the cattle categories. The average prices for steers and heifers dropped 0.7p/kg and 0.5p/kg in ROI. Declines were also reported for R3 young bull prices which were back 0.2p/kg to 398.8p/kg and O3 grade cows back 0.6p/kg to 343.7p/kg last week.

LAST WEEK'S DEADWEIGHT CATTLE PRICES (UK / ROI)

W/E 30/09/23		Northern Ireland	Rep of Ireland	Scotland	Northern England	Midlands & Wales	Southern England	GB
Steers	U3	470.9	415.8	498.6	491.3	489.1	494.7	493.8
	R3	468.2	406.6	498.9	489.3	482.9	484.6	488.5
	R4	466.9	407.3	497.8	490.8	480.3	488.5	492.5
	O3	457.2	391.2	483.0	473.4	464.2	466.0	469.5
	AVG	459.2	-	494.7	481.8	470.3	471.7	480.0
Heifers	U3	472.4	419.8	505.4	494.8	496.7	493.7	498.8
	R3	467.5	410.7	493.3	487.8	484.9	484.7	487.1
	R4	464.8	409.9	498.2	488.9	484.7	486.4	492.3
	O3	457.6	400.9	475.0	465.1	460.2	459.2	462.5
	AVG	458.0	-	495.0	478.0	469.0	466.9	477.9
Young Bulls	U3	462.1	408.8	490.1	474.4	486.4	461.0	482.3
	R3	456.5	398.8	477.2	477.3	478.8	465.0	477.6
	O3	438.7	382.6	439.6	449.9	445.2	444.3	445.3
	AVG	445.3	-	473.2	464.6	464.2	448.0	464.6
Prime Cattle Price Reported		5,789	-	6,196	6,787	7,175	4,736	24,894
Cows	O3	348.9	343.7	384.1	364.2	360.9	363.6	364.3
	O4	350.2	343.6	389.0	367.7	360.4	361.8	366.6
	P2	312.6	307.1	336.8	328.7	319.2	325.4	323.8
	P3	328.5	329.5	348.4	345.9	330.4	345.6	339.3
	AVG	308.1	-	378.5	341.2	323.7	322.0	332.6

Notes: (i) Prices are p/kg Sterling-ROI prices converted at 1 euro=86.72p Stg
(ii) Shading indicates a lower price than the previous week.
(iii) AVG is the average of all grades in the category, not just those listed

LIVEWEIGHT CATTLE TRADE

LATEST LIVEWEIGHT CATTLE MART PRICES NI

W/E 30/09/23	1st QUALITY			2nd QUALITY		
	From	To	Avg	From	To	Avg
Finished Cattle (p/kg)						
Steers	265	305	285	205	264	235
Friesians	-	-	-	-	-	-
Heifers	260	298	274	200	259	225
Beef Cows	215	272	230	170	214	188
Dairy Cows	140	180	150	65	139	100
Store Cattle (p/kg)						
Bullocks up to 400kg	300	358	320	210	299	255
Bullocks 400kg - 500kg	265	336	300	215	264	240
Bullocks over 500kg	255	326	290	200	254	220
Heifers up to 450kg	260	329	280	210	259	225
Heifers over 450kg	230	284	260	175	229	205
Dropped Calves (£/head)						
Continental Bulls	375	550	450	230	370	300
Continental Heifers	300	430	365	150	295	225
Friesian Bulls	145	230	170	40	140	75
Holstein Bulls	70	125	95	10	65	35

DEADWEIGHT SHEEP TRADE

NI SHEEP BASE QUOTES

(P/Kg DW)	This Week 02/10/23	Next Week 09/10/23
R3 Lambs up to 21kg	510 - 515p	510 - 515p

REPORTED SHEEP PRICES

(P/KG)	W/E 16/09/23	W/E 23/09/23	W/E 30/09/23
NI L/W Lambs	477.6	483.3	474.1
NI D/W Lambs	517.9	518.7	520.1
GB D/W Lambs	546.4	553.1	549.7
ROI D/W	529.8	532.0	534.6

Deadweight Sheep Trade

An average deadweight price of 520.1p/kg was paid for lambs in NI last week, an increase of 1.4p/kg from the previous week. Base quotes ended this week in the regions of 510-515p/kg for R3 lambs up to 21kg. Similar quotes are expected early next week with just one plant quoting 510p/kg for next week. The lamb kill in NI continues to reach calendar year highs with figures last week totalling 11,627. Meanwhile, a total of 6,789 lambs were exported to ROI for direct slaughter last week, bringing the total exports to ROI for direct slaughter to 73,193 for the third quarter of this year. Deadweight trade for sheep in NI continues to go from strength to strength with an increase of 1.4p/kg bringing the deadweight lamb price up to 520.1p/kg last week. An increase of 2.6p/kg in deadweight sheep trade was also reported in ROI, with lambs priced at 534.6p/kg last week. As for GB on the other hand, which reported a decline of 3.4p/kg in deadweight lamb prices to 549.7p/kg last week.

Liveweight Sheep Trade

Strong numbers passed through the marts last week, while the trade was slightly softer compared to the previous week. Strong numbers of fat ewes also continue to pass through the marts with a top reported price of £236 last week.

LIVEWEIGHT SHEEP TRADE

LATEST SHEEP MARTS (P/KG LW)

From: 30/09/23		Lambs			
To: 05/10/23		No	From	To	Avg
Saturday	Omagh	1190	489	536	-
	Swatragh	1700	425	470	-
Monday	Kilrea	1000	470	505	-
	Markethill	1340	450	483	-
Tuesday	Saintfield	900	460	500	-
	Rathfriland	1012	450	530	471
Wednesday	Ballymena	2332	450	502	469
	Enniskillen	1289	450	522	-
	Armoyle	490	455	480	-

IT'S BUSINESS AS USUAL AT LMC

Livestock and Meat Commission (LMC) Interim Chief Executive, Colin Smith, is confirming that it will be very much 'business as usual' for the organisation over the coming months.

Colin comments: "Our business plan for 2023/24 was agreed some months ago: work continues to ensure it is implemented in full. "It relates a planned programme of work, covering the various pillars of activity undertaken by the Commission. "These are: the co-ordination of the Northern Ireland Beef & Lamb Farm Quality Assurance Scheme (NIBL FQAS); the effective marketing of farm quality assured beef and lamb on home and export markets, communicating the nutritional benefits of farm quality beef and lamb, courtesy of our successful schools' programme, LMC's market information and price reporting services and our active involvement in preparing for the rolling out of Northern Ireland's Carbon Programme. "

Colin continued: "All of this work continues apace." But Colin Smith also recognises that key strategic decisions will have to be taken by a fully constituted LMC board in the very near future. "Recent months have seen former LMC chair, plus four other board members complete their terms of office." The full board comprises of an independently appointed chairperson plus five other board members, again all independently appointed through the public appointments process. Colin Smith again: "I am hopeful that the outstanding board appointments will be made in the very near future. "Having a full cohort of board members in place will allow for agreement on a number of key issues that will impact directly on



the future policies implemented by LMC."

Chief among these will be the ratification of a strategic plan for the three-year period: 2024 to 2027. Colin Smith explained: "The work provides the framework for the broad direction that LMC will want to take at a time when all sectors of farming in Northern Ireland are facing up to fundamental change. "Its agreement will require a detailed level of interaction with LMC's key stakeholders. "It is vitally important that our key stakeholders support the principles established with the plan."

"LMC has a very strong track record in delivering for Northern Ireland's beef and sheep sectors over many years. "It's important that all of this is built on for the future. "The coming years will see fundamental change in the way that government support is made available to the farming sectors.

"This evolution will be centred around improving the sustainability of Northern Ireland's farming businesses. "LMC will have a key role to play as these issues impact on Northern Ireland's beef and sheep industries."

Carbon Surveys: Research & Development phase continues

Livestock and Meat Commission (LMC) Interim Chief Executive, Colin Smith is confirming that 100 of 250 carbon surveys of NIBL FQAS farms have been completed as part of a carbon data collection Research and Development exercise.

"The remaining 150 surveys will be completed during the months of October, November and December," he further explained. "The information gathered will be used to test the process of carbon data collection on farm and if data quality is sufficient can be used to determine a carbon footprint for each individual business. The initial surveys will specifically provide a carbon baseline for each business that is surveyed."

The information gathered from the research and development phase will also be used to continually refine and improve the carbon survey process. Colin Smith again: "Large numbers of farm quality beef and sheep farms operate other enterprises within their businesses: dairy, pigs, poultry arable etc. "As a consequence, surveying these farms, across all of their enterprises will allow a carbon calculation on a whole farm basis."

The carbon surveys are carried out as a 'bolt-on' to a scheduled farm quality assurance inspection. Colin Smith continued: "Each of the farmers taking

part in this research and development work is selected at random. The farmer is supplied with a check list with helpful templates to aid preparation ahead of the farm visit. "If the checklist has been completed prior to the actual survey taking place then the additional time required to complete the process on the day of the inspection will be in the region of 90- minutes. "The farmers will also be contacted by LMC beforehand giving an opportunity to secure whatever advice they need. "Some red meat and dairy processors have also committed to assist farmers in advance of the farm visit."

Colin went on to point out that LMC is carrying out these surveys on behalf of Northern Ireland's Carbon Steering Group (CSG). The CSG has been set up to represent farmers and the agri-food industry, and progress with the carbon element of Northern Ireland's sustainability agenda. The collaboration has been built on the recognition that an industry wide co-ordinated approach is the most effective way to ensure the farming sectors are heard and that the best solutions are achieved for everyone in Northern Ireland.

"The farming industry must establish a base line carbon footprint, which will be important in evidencing our sustainability credentials. "The research and development phase is the first step in this process. Beyond this industry and government are looking at a more extensive body of work to identify the carbon footprint of agriculture in Northern Ireland. "The information gathered in this way must be relevant and accurate across the industry as a whole."

LMC EDUCATION PROGRAMME IS IN FULL SWING

It is all hands on deck for the LMC Education Team with lots of exciting projects and events in the pipeline for roll out over the Autumn and Winter months.

Post Primary Cookery Demonstrations

Annually the Commission offers 375 cookery demonstrations to post primary schools across Northern Ireland. "All available demonstrations were booked up within 48 hours of the booking system opening," confirmed LMC interim chief executive, Colin Smith. "Our education programme continues to grow in popularity and we are pleased to this year have been able to offer at least one demonstration to each school which requested a booking."

"Demonstrations are underway across all counties in Northern Ireland," Colin remarked. He added that no two demonstrations are the same, noting, "Our 10 fully qualified professional cookery demonstrators work with teachers to tailor the content of the demonstration to align with the learning outcomes for the class. Common themes covered include, macro and micronutrients, healthy lifestyle, Northern Ireland Farm Quality Assured (NIFQA) and traceability through the supply chain."

Hilary Stevenson one of LMC's demonstrators, said, "I love that my job gives me an opportunity to engage with pupils. Seeing their interest during the demonstration translate into an eagerness to recreate nutritional beef and lamb recipes at home is testament to the importance of our work." At the end of each demonstration pupils are invited to sample a freshly cooked NIFQA beef or lamb dish, with many reflecting to demonstrators that they thoroughly enjoyed the dish and the

demonstration. Pupils are also provided with a copy of LMC's recipe book which is packed full of information relevant to topics covered in class and has a host of quick, tasty and nutritious beef and lamb recipes. A new recipe book is due to be launched in the coming weeks, keep an eye on LMC's website for updates.

Red Meat Skills Workshops

This month will see a number of Food and Nutrition teachers travel to Magherafelt High School to participate in LMC's Red Meat Skills Workshop. "Run in conjunction with the British Nutrition Foundation, our Red Meat Skills Workshops aim to upskill teachers in their practical and theoretical knowledge of using beef and lamb in the classroom," Colin said. Further dates and locations for workshops will be announced in due course by LMC.

Meat4Schools

The Meat4Schools competition is currently live offering schools across Northern Ireland a chance to win a £100 hamper full of NIFQA beef and lamb.

Encouraging teachers and pupils to get involved, LMC interim chief executive, Colin Smith said, "At LMC we are passionate about promoting the positive credentials of NIFQA beef and lamb to pupils of all ages. The Meat4Schools competition is a great way for pupils to get creative and showcase their theoretical knowledge in a fun and interactive way."

Further details on how to enter and the Key Stage entry topics are available on our Food4Life website, www.food4life.org.uk/meat4schools/

FINAL DEADLINE FOR FREE AMR TRAINING SESSIONS

Free training courses on the responsible use of antimicrobials on beef and sheep farms come to an end on

31st OCTOBER 2023

AMR training is a requirement for NIBL FQAS participants, LMC is encouraging those who have not yet partaken in the training to register for a free upcoming training session before the deadline.

Details on upcoming training dates can be found on the CAFRE website at:

www.cafre.ac.uk/business-courses/responsible-use-of-antimicrobials-on-beef-and-sheep-farms or by contacting AI Services on (028) 9083 3123.

Attendees must pre-register in order to attend a session. Attendance certificates for AMR training must be kept and shown at FQAS inspection.



Contact us:

W: www.lmcni.com

T: 028 9263 3000

LMC does not guarantee the accuracy or completeness of any third party information provided in or included with this publication. LMC hereby disclaims any responsibility for error, omission or inaccuracy in the information, misinterpretation or any other loss, disappointment, negligence or damage caused by reliance on third party information.

Not for further publication or distribution without prior permission from LMC