

DEADWEIGHT CATTLE TRADE

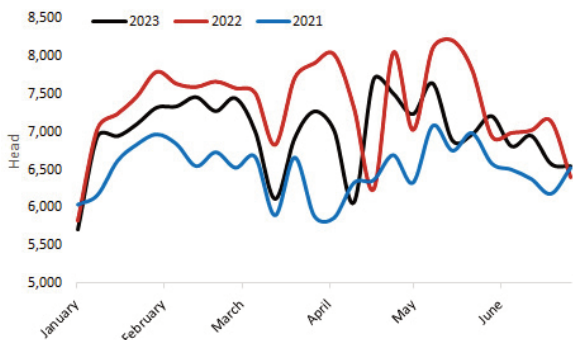
NI FACTORY BASE QUOTES FOR CATTLE

(P/KG DW)	This Week 03/07/23	Next Week 10/07/23
Prime		
U-3	454 - 460p	454 - 460p
R-3	448 - 454p	448 - 454p
O+3	442 - 448p	442 - 448p
P+3	386 - 392p	386 - 392p
Including bonus where applicable		
Cows		
O+3	358 - 370p	354 - 370p

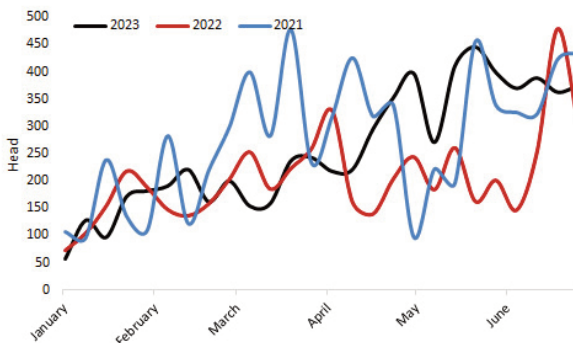
Cow quotes vary depending on weight and grade. Pricing policies vary from plant to plant. Producers are advised to check pricing policies before presenting cattle for slaughter.

Prime Cattle Throughput to date 2021-2023

Source: DAERA



Prime Cattle Imports from ROI for direct slaughter to date 2021-2023 Source: DAERA



REPORTED NI CATTLE PRICES - P/KG

W/E 01/07/23	Steers	Heifers	Young Bulls
U3	485.0	484.7	475.3
R3	477.5	479.7	469.6
O+3	470.7	472.9	457.7

*Prices exclude AA, HER and Organic cattle

REPORTED COW PRICES NI - P/KG

W/E 01/07/23	Weight Bands			
	<220kg	220-250kg	250-280kg	>280kg
P1	270.4	286.0	299.9	310.2
P2	278.5	320.6	337.2	354.6
P3	321.8	335.0	354.4	362.9
O3	326.0	348.0	373.7	380.7
O4	-	351.1	384.1	388.3
R3	-	-	-	401.4

Deadweight Cattle Trade

This week a further softening was seen in the local deadweight cattle trade with base quotes for in-spec prime cattle ranging from 454-460p/kg. Base quotes for O+3 grading cows early next week are expected to range from 354-370p/kg with just one plant quoting at the upper end. Prices paid have declined in correspondence with the base quotes published by LMC, however producers are reminded quotes should be used as a starting point for negotiation with higher prices available for good quality cattle.

Last week the average price paid for an R3 grading steer in NI was 479p/kg, back 4.2p/kg on the previous week. The trade for young bulls recorded a similar decline to steers while the heifer trade decreased by a lesser amount. The R3 heifer price in NI last week remained steady from the previous week at 481.6p/kg. According to the major processors consumer demand for minced meat remains strong and this has somewhat supported the cow trade in recent weeks however prices do continue to fall, with the O3 cow price in NI last week back 5.6p/kg on the previous week to 379.4p/kg.

It has been reported beef import volumes into the EU have been 9 per cent higher during the first quarter of 2023 relative to the corresponding period last year suggesting food service demand has been strong. However food service demand is now weakening as consumer spending comes under more pressure following the withdrawal of government supports for energy (Gira Meat Club Mid Year Update).

LAST WEEK'S DEADWEIGHT CATTLE PRICES (UK / ROI)

W/E 01/07/23	Northern Ireland	Rep of Ireland	Scotland	Northern England	Midlands & Wales	Southern England	GB	
Steers	U3	485.2	442.3	493.2	493.0	490.6	491.4	492.1
	R3	479.0	432.2	491.4	486.2	481.7	483.1	484.6
	R4	477.8	433.1	493.0	493.0	481.4	485.9	490.3
	O3	466.7	419.3	476.0	470.5	466.8	461.8	466.9
	AVG	466.8	-	488.9	480.0	473.4	470.3	477.6
Heifers	U3	484.9	454.4	498.2	492.2	495.5	490.5	494.2
	R3	481.6	437.4	489.6	484.5	484.7	478.6	483.5
	R4	478.6	439.4	493.5	488.8	481.5	480.4	487.6
	O3	467.7	427.8	462.7	467.6	457.9	456.0	460.4
	AVG	470.4	-	490.4	478.7	470.5	464.7	475.3
Young Bulls	U3	474.3	436.0	483.6	484.6	487.9	485.4	484.8
	R3	467.7	424.2	478.2	479.4	481.3	473.7	479.3
	O3	451.6	406.8	456.4	440.7	450.9	448.0	448.4
	AVG	458.1	-	478.9	468.4	470.2	469.1	472.3
	Prime Cattle Price Reported	5,383	-	5,060	6,720	7,466	5,156	24,402
Cows	O3	379.4	350.3	402.2	400.6	399.7	396.9	399.6
	O4	387.8	350.0	401.4	402.3	396.5	395.9	398.7
	P2	339.4	316.0	363.1	361.2	358.2	355.3	357.9
	P3	358.4	337.2	378.5	380.8	372.5	370.0	373.0
	AVG	352.1	-	399.0	380.8	372.3	356.9	372.5

Notes: (i) Prices are p/kg Sterling-ROI prices converted at 1 euro=86.10p Stg
(ii) Shading indicates a lower price than the previous week.
(iii) AVG is the average of all grades in the category, not just those listed

LIVEWEIGHT CATTLE TRADE

LATEST LIVEWEIGHT CATTLE MART PRICES NI

W/E 01/07/23	1st QUALITY			2nd QUALITY		
	From	To	Avg	From	To	Avg
Finished Cattle (p/kg)						
Steers	260	312	285	210	259	235
Friesians	208	233	223	150	204	181
Heifers	250	292	265	205	249	225
Beef Cows	220	265	235	170	219	195
Dairy Cows	130	170	150	44	129	100
Store Cattle (p/kg)						
Bullocks up to 400kg	300	379	330	220	299	240
Bullocks 400kg - 500kg	250	357	290	190	249	225
Bullocks over 500kg	250	296	270	208	248	225
Heifers up to 450kg	245	329	280	170	244	205
Heifers over 450kg	250	290	270	160	249	200
Dropped Calves (£/head)						
Continental Bulls	400	570	450	225	395	310
Continental Heifers	375	605	420	225	370	300
Friesian Bulls	100	240	195	35	85	60
Holstein Bulls	-	-	-	7	7	7

DEADWEIGHT SHEEP TRADE

NI SHEEP BASE QUOTES

(P/Kg DW)	This Week 03/07/23	Next Week 10/07/23
R3 Lambs up to 21kg	580 - 590p	570 - 580p

REPORTED SHEEP PRICES

(P/KG)	W/E 17/06/23	W/E 24/06/23	W/E 01/07/23
NI L/W Lambs	599.5	580.5	557.8
NI D/W Lambs	634.0	626.5	612.0
GB D/W Lambs	655.7	635.2	646.2
ROI D/W	647.6	652.5	644.5

Deadweight Sheep Trade

Base quotes from the three major plants for R3 grade lambs have come under further pressure this week as increased supplies become available for slaughter. The major processors were quoting 570-585p/kg for lambs up to 21kg mid-week with a similar trade expected early next week.

Lamb throughput in local plants last week totalled 9,569 head an increase of 397 head from the previous week. Meanwhile lamb exports to ROI for direct slaughter were back 1,881 head on the previous week to total 4,452 head. Last week in NI ewe slaughterings were at the lowest levels during the year to date totalling 106 head with 236 ewes exported, also back on the previous week.

The deadweight lamb price in NI last week was back by a notable 14.5p/kg to 612p/kg, well ahead of the 585.6p/kg paid during the corresponding week last year. In ROI the deadweight lamb price was back by the equivalent of 8p/kg to 644.5p/kg.

Liveweight Sheep Trade

Last week strong shows of lambs passed through the local sales rings with an average price of 532p/kg reported for fat lambs in both Rathfriland and Ballymena.

LIVEWEIGHT SHEEP TRADE

LATEST SHEEP MARTS (P/KG LW)

From: 01/07/23		Lambs			
To: 06/07/23		No	From	To	Avg
Saturday	Swatragh	750	500	544	-
Monday	Kilrea	700	520	543	-
	Markethill	930	530	562	-
Tuesday	Saintfield	680	525	555	-
	Rathfriland	619	500	546	532
Wednesday	Ballymena	1366	508	572	532
	Enniskillen	502	500	542	-
	Armooy	373	550	590	-