

## DEADWEIGHT CATTLE TRADE

### NI FACTORY BASE QUOTES FOR CATTLE

(P/KG DW)	This Week 20/11/23	Next Week 27/11/23
<b>Prime</b>		
U-3	440 - 446p	440 - 448p
R-3	434 - 440p	434 - 442p
O+3	428 - 434p	428 - 436p
P+3	372 - 378p	372 - 380p
<b>Cows</b>		
O+3	298 - 336p	298 - 320p

Cow quotes vary depending on weight and grade. Pricing policies vary from plant to plant. Producers are advised to check pricing policies before presenting cattle for slaughter.

### REPORTED NI CATTLE PRICES - P/KG

W/E 18/11/23	Steers	Heifers	Young Bulls
U3	466.7	469.6	450.9
R3	460.5	461.0	447.7
O+3	453.6	454.6	432.7
<b>11/11/23</b>			
U3	464.5	468.9	443.1
R3	461.0	462.1	445.4
O+3	455.3	449.0	439.5
<b>04/11/23</b>			
U3	468.1	469.5	-
R3	463.6	465.9	454.0
O+3	456.5	462.4	-

\*Prices exclude AA, HER and Organic cattle

Recent editions of the LMC Bulletin now include deadweight cattle prices excluding premiums, and are available to view at <https://www.lmcni.com/publications-bulletins>

### DECEMBER MART SUPPORT

Monday 4th (Day) ~ Omagh Livestock Mart

Friday 8th (Day) ~ Ballymena Livestock Mart

Tuesday 12th (Day) ~ Markethill Livestock Mart

LMC FQAS Farm Liaison Officer, Terry White, will be available at the above cattle sales during December to assist FQAS members or applicants with any scheme related queries.

### REPORTED COW PRICES NI - P/KG

W/E 18/11/23	Weight Bands			
	<220kg	220-250kg	250-280kg	>280kg
P1	201.4	214.8	225.6	237.8
P2	231.8	248.8	267.4	283.7
P3	259.0	265.3	284.5	293.5
O3	180.0	273.5	302.9	312.4
O4	-	269.8	290.0	315.6
R3	-	-	-	335.7

### Deadweight Cattle Trade

Base quotes from the major processors for in spec U-3 grading steers and heifers ended the week at 440-446p/kg with base quotes for good quality O+3 cows ranging from 298-320p/kg. Early next week stronger quotes are expected for clean cattle.

Prime cattle supplies remained high last week with 8,354 head slaughtered locally. While this was back 372 head on the week prior, it remained 99 head stronger than during the same week last year. Last week cow throughput in local plants increased by 199 head from the previous week to total 3,049 head. The highest weekly cow throughput recorded in NI during the year to date.

Last week in NI the trade for steers was softer on the previous week with an average price of 452.7p/kg reported, back almost 2p/kg from the previous week. By category steers reported the largest and most consistent declines, however within the category the price paid for U3 grade steers was up 0.7p/kg week on week. The average price paid for heifers last week was 454.1p/kg, up almost half a penny from the previous week, while the average young bull price was up 0.9p/kg to 436p/kg. The deadweight cow trade showed signs of recovery in NI last week with the average price paid for cows up 1.1p/kg to 269.3p/kg, while the average price paid for an O3 cow was up 1.4p/kg to 310.6p/kg.

Across the water a softer trade was reported with the majority of prime cattle grades reporting declines from the previous week. By category in GB the cow trade recorded the largest decline from the previous week, back by 6.9p/kg on average. On the other hand, in ROI the deadweight trade for cattle strengthened for the second consecutive week in both euro and sterling terms. The R3 steer price in ROI last week was the equivalent 408.5p/kg, up 5.2p/kg from the previous week. The R3 heifer price in ROI reported a 4.3p/kg increase to 412.7p/kg, meanwhile, the average O3 cow last week was 331.3p/kg, remaining 20.7p/kg ahead of the equivalent price in NI.

### LAST WEEK'S DEADWEIGHT CATTLE PRICES (UK / ROI)

W/E 18/11/23		Northern Ireland	Rep of Ireland	Scotland	Northern England	Midlands & Wales	Southern England	GB
		Steers	U3	466.3	416.4	505.8	494.1	491.8
	R3	462.6	408.5	500.1	489.6	485.9	485.8	489.7
	R4	462.0	406.2	500.4	490.8	479.3	487.1	492.9
	O3	453.0	394.9	487.3	476.5	465.6	463.8	470.5
	AVG	452.7	-	498.2	483.3	473.2	473.4	481.7
Heifers	U3	466.3	423.4	508.7	490.6	496.8	496.9	498.6
	R3	463.0	412.7	498.6	488.3	486.0	484.1	488.0
	R4	460.5	414.5	498.4	487.8	483.3	484.2	490.7
	O3	453.6	407.3	486.1	467.1	457.5	461.7	463.4
	AVG	454.1	-	496.1	479.2	463.1	465.0	475.0
Young Bulls	U3	450.0	410.3	490.2	480.8	470.3	486.0	482.3
	R3	445.9	402.7	483.8	469.9	474.0	473.3	474.9
	O3	431.5	385.9	461.1	443.9	449.2	450.8	450.6
	AVG	436.0	-	472.9	459.7	455.5	457.9	460.0
Prime Cattle Price Reported		6,924	-	5,615	6,602	7,807	4,959	24,983
Cows	O3	310.6	331.3	339.0	325.2	320.3	316.1	322.9
	O4	314.5	331.8	344.3	328.4	323.7	315.8	326.4
	P2	271.0	285.4	296.2	287.0	281.7	280.4	282.8
	P3	290.0	312.2	310.5	306.5	298.3	298.2	299.7
	AVG	269.3	-	332.1	302.6	281.1	274.3	289.0

Notes: (i) Prices are p/kg Sterling-ROI prices converted at 1 euro=87.30p Stg  
(ii) Shading indicates a lower price than the previous week.  
(iii) AVG is the average of all grades in the category, not just those listed

## LIVEWEIGHT CATTLE TRADE

### LATEST LIVEWEIGHT CATTLE MART PRICES NI

W/E 18/11/23	1st QUALITY			2nd QUALITY		
	From	To	Avg	From	To	Avg
<b>Finished Cattle (p/kg)</b>						
Steers	270	308	283	215	269	240
Friesians	203	216	212	184	202	194
Heifers	241	287	254	200	240	220
Beef Cows	200	258	218	140	199	165
Dairy Cows	121	159	128	50	120	80
<b>Store Cattle (p/kg)</b>						
Bullocks up to 400kg	275	369	305	205	274	235
Bullocks 400kg - 500kg	260	420	280	200	259	225
Bullocks over 500kg	224	287	252	170	220	190
Heifers up to 450kg	275	409	300	215	274	240
Heifers over 450kg	260	363	300	177	259	210
<b>Dropped Calves (£/head)</b>						
Continental Bulls	350	515	410	225	345	275
Continental Heifers	300	600	370	150	295	215
Friesian Bulls	100	170	130	40	95	60
Holstein Bulls	60	150	100	5	55	30

## DEADWEIGHT SHEEP TRADE

### NI SHEEP BASE QUOTES

(P/Kg DW)	This Week 20/11/23	Next Week 27/11/23
R3 Lambs up to 22kg	530p	530 - 545p

### REPORTED SHEEP PRICES

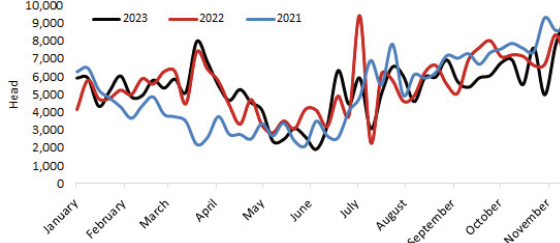
(P/KG)	W/E 04/11/23	W/E 11/11/23	W/E 18/11/23
NI L/W Lambs	475.8	472.5	479.2
NI D/W Lambs	-	525.0	528.7
GB D/W Lambs	569.8	577.9	589.9
ROI D/W	549.8	553.1	559.9

### Sheep Trade

Last week lamb throughput in local plants totalled 10,703 head. A further 9,478 lambs were exported from NI for direct slaughter in ROI plants last week, the largest weekly export consignment recorded during the year to date. This week in the marts average prices in the region of 490 - 492p/kg were reported for slaughter type lambs in Rathfriland and Ballymena respectively, an improved trade on the previous week with a tighter supply reported. Base quotes from the major lamb processors ended this week ranging from 530-545p/kg up to 22kg. Early next week base quotes of 530-545p/kg are expected across the major meat plants, with producers reminded to use these base quotes as a starting point for negotiation.

Direct slaughter lamb exports from NI to ROI 2021-2023.

Source: DAERA



## LIVEWEIGHT SHEEP TRADE

### LATEST SHEEP MARTS (P/KG LW)

From: 18/11/23		Lambs			
To: 23/11/23		No	From	To	Avg
Saturday	Omagh	908	492	519	-
	Swatragh	1100	463	505	-
Monday	Kilrea	1100	482	510	-
	Markethill	850	460	490	-
Tuesday	Saintfield	880	488	544	-
	Rathfriland	709	477	533	490
Wednesday	Ballymena	2506	480	527	492
	Enniskillen	608	480	520	-
	Armoyle	649	465	512	-