



# Coronavirus (COVID-19)

---

# Weekly Epidemiological Bulletin



**Northern Ireland**

## Summary - Up to week 23 (13 June 2021)

To week 23, there have been a total of 123,246 laboratory confirmed cases<sup>1</sup> of COVID-19, including 2,976 registered COVID-19 deaths<sup>2</sup> in Northern Ireland (NI).

### COVID-19 case epidemiology



- 123,246 laboratory confirmed cases (16.1% from HSC laboratories)
- 53.3% of total cases are female
- In week 23, those aged 15-44 had the highest case rate (64.1 per 100,000 population; 5.1% positivity)
- In week 23, Derry and Strabane had the highest case rate (79.3 per 100,000 population; 6.2% positivity)

### Confirmed COVID-19 care home outbreaks



- 570 confirmed COVID-19 outbreaks reported in total; includes 1 reported in week 23
- Involving 333 care homes (69.1% of all NI care homes)
- The highest proportion of outbreaks (73.1%) were reported from the Southern Trust area

### Sentinel testing



- Testing started 27 April 2020
- Number of individuals tested in total: 1,118 (3.6% positivity)

<sup>1</sup> Virological reports and the National Testing Programme.

<sup>2</sup> NISRA; 2020-21 - up to 04 June 2021

## COVID centres



- Testing started 15 June 2020 (one COVID centre: BHSCT)
- Virology data from the COVID centre became available from 01 July 2020
- Number of individuals tested 15 - 30 June 2020: 182 (all negative)
- Number of individuals tested 01 July – 22 November 2020: 864 (1.6% positivity)

## Critical care surveillance



- 585 confirmed COVID-19 individuals
- The majority of reported critical care cases were male (69.4%)
- Median age of cases was 61 years (range <1 – 90 years)

## Schools Surveillance



- 2,310 COVID-19 incidents reported in 944 schools (63.8% of all NI schools)
- 52.6% of incidents have been single cases, 35.1% were clusters of 2-5 cases; 12.3% were clusters of 6 or more cases
- Since schools opened, the highest proportion of incidents have been reported in Belfast and Derry and Strabane (both 75%)

## Mortality surveillance

- In week ending 04 June 2021, the proportion of COVID-19 deaths registered was 0.7%. From the 19 March 2020 to



week ending 04 June 2021 the proportion was 13.9%

- Excess deaths were reported in 2020 in weeks 13-20, 22 and 45 and in 2021 in week 2; mainly in those over 65 years old

### Testing surveillance virology



- Number of individuals tested in total: 1,388,643 (8.9% positivity)
- Number of individuals tested in:
  - HSC laboratories: 429,468 (30.9% of total tests)
  - National Testing Programme: 959,175 (69.1% of total tests)

## Introduction

COVID-19 is a new illness that can affect your lungs and airways. It's caused by a virus called SARS-CoV2 (a member of the coronavirus family).

The Public Health Agency (PHA) Health Protection team has developed this report with the primary focus of looking at the demographic characteristics (age, sex and geographical location) of people affected by the virus. It also looks at some of the wider impacts of the virus on the healthcare system, comparing recent trends in activity with historic norms. There is a large amount of data being regularly published regarding COVID-19 (for example, [the Department of Health COVID-19 Daily Dashboard Updates](#) and the [NISRA Deaths Registered Dashboard](#)). This report presents data from existing and newly developed PHA Health Protection surveillance systems that monitor COVID-19 activity in NI and complements the range of existing data currently available.

As this is an emerging pandemic the systems used will constantly evolve and the complexity of the analysis will increase. Any updates will be documented in a “what’s new” section.

Unless otherwise stated, data are presented using epidemiological weeks (a standardised method of counting weeks [Monday-Sunday] to allow for the comparison of data year after year). This is dependent on the data available and annual comparisons are not yet possible as the virus only emerged in 2020.

The data included in this report are the most up to date data available at the time of the report; however this is subject to change as the data are subject to ongoing quality assurance.

## What's New

- There has been an update to the total number of NI schools. The total number of schools reflect the current situation and this change can be accounted for by events including closures or amalgamations, amongst others
- There have been updates to the total numbers of care homes mentioned in this report

## Contact tracing

Contact tracing is the process of identifying, assessing, and managing people who have been exposed to a disease to prevent onward transmission ([WHO](#)). Contact tracing can help break the chains of transmission of COVID-19 and is an essential public health tool for controlling the virus.

Contact tracing seeks to limit and prevent the spread of infections such as COVID-19. It works by identifying a confirmed case and asking them who they have been in contact with. Individual contacts are considered high risk if they have spent more than 15 minutes in close contact with a confirmed case without personal protection. This means that those who have casually passed by someone on the street will not be considered high risk. The person with a confirmed infection and their close contacts will be given advice regarding symptom management and the need to self-isolate to prevent wider spread of the virus. This advice is based on information available on the PHA [website](#) and includes social distancing, handwashing and cleaning in the home to help protect people who are at risk. We can also advise people on how to best look after those in their care.

The most up-to-date contact tracing management service update (issued 10 June 2021) can be found [here](#)\*

The StopCOVID NI contact tracing app is now [available](#) from the Google or Apple App store.

\*These are experimental performance and activity data and provide a snapshot of contact tracer activity. Data reported relates to a live operational system which includes case and contact activity in progress or in a queue. It is based on manually recorded information and data extracted from current contact tracing systems and reporting methods and parameters may change over time.

Automatic reporting in future may create a discontinuity in figures. New IT systems and data outputs often take some time to bed in. Data should therefore be treated with caution while the system and understanding of the data develops. At this stage, there is a risk of data entry errors or delay, which may require that data are revised and updated in future. The process of finding and removing duplicate records may also need refining, which could result in revisions to the data.

## Clusters

### Definition:

A cluster is currently defined as two or more laboratory confirmed cases of COVID-19 among individuals associated with a key setting, who have illness onset dates within a 14 day period. Key settings in which clusters have occurred include: workplaces, retail, hospitality and leisure premises as well as educational settings<sup>3</sup>.

### Comment:

Number of all clusters (open and closed) that have been recorded by the contact tracing service up to 12pm Sunday 13 June 2021. Please note that the reporting window for clusters has changed compared to previous bulletins.

There have been 21 new clusters since Monday 7 June 2021<sup>4,5</sup>. In total, up to 13 June 2021, a total of 513 clusters with greater than five people have been identified in the following council areas; Antrim and Newtownabbey (n=46), Ards and North Down (n=18), Armagh City, Banbridge and Craigavon (n=70), Belfast City (n=107), Causeway Coast and Glens (n=22), Derry City and Strabane (n=46), Fermanagh and Omagh (n=30), Lisburn and Castlereagh City (n=33), Mid and East Antrim(n=39), Mid Ulster (n=63) and Newry, Mourne and Down (n=39). In addition, there have been 1,936 clusters across Northern Ireland with fewer than five people.

*Source: Contact Tracing Service / PHA Health Protection Service*

---

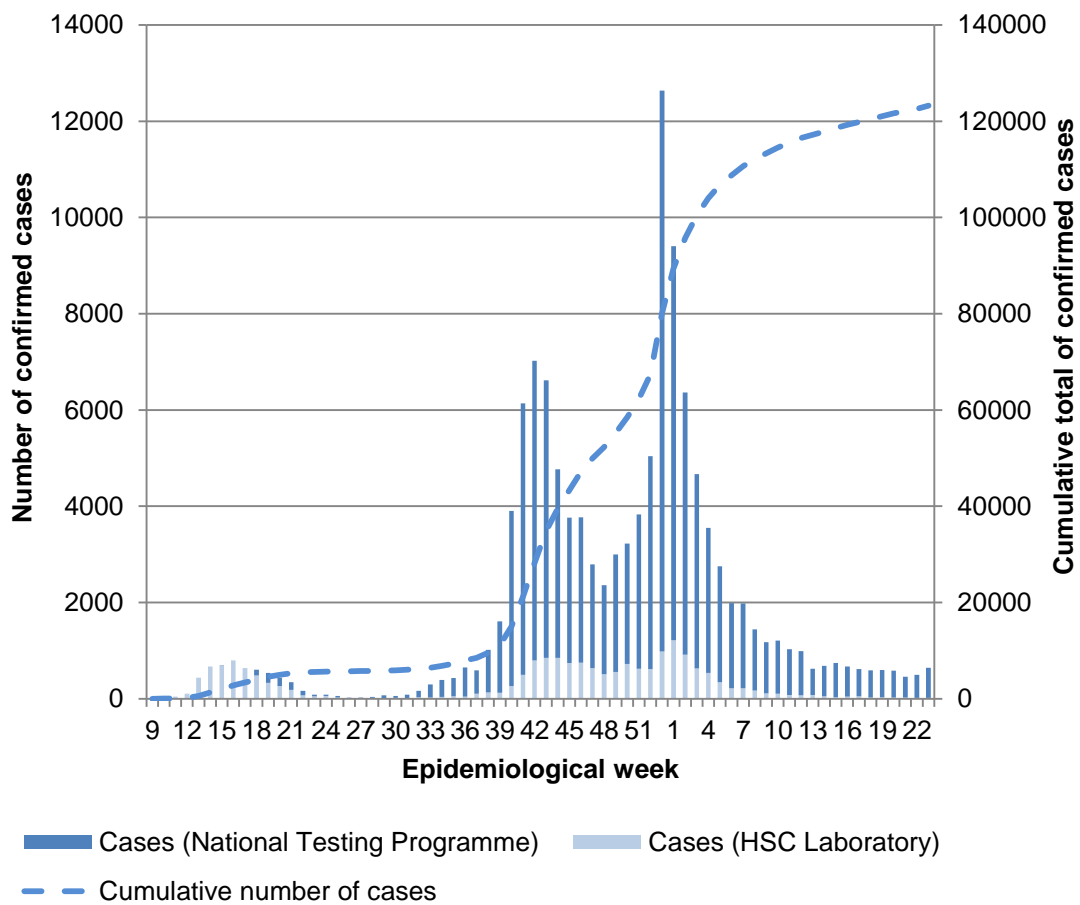
<sup>3</sup> COVID-19 transmission is most common in household settings. The number of affected households is not reported.

<sup>4</sup> Some clusters may overlap (larger clusters may contain or overlap with several smaller clusters).

<sup>5</sup> From week to week the number of clusters may change due to ongoing updates to the source information following detailed risk assessments. For this reason, we would discourage making direct comparisons between the cumulative number of clusters reported each week, with the number reported in the current week the most accurate at the time of the report.



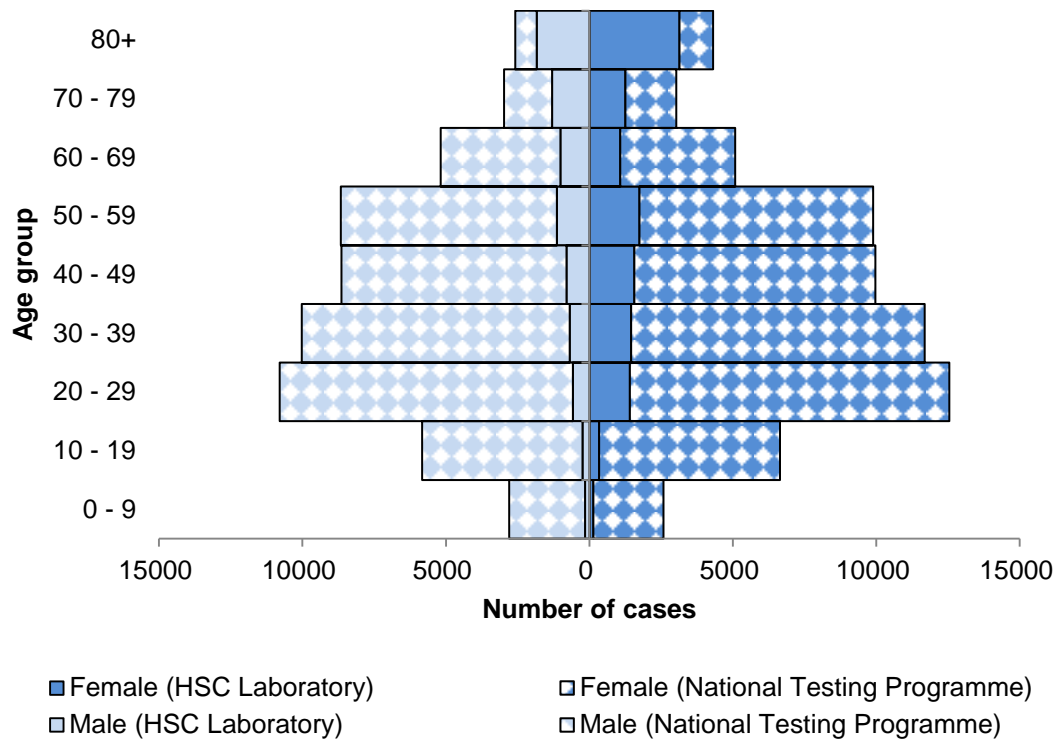
## Case epidemiology



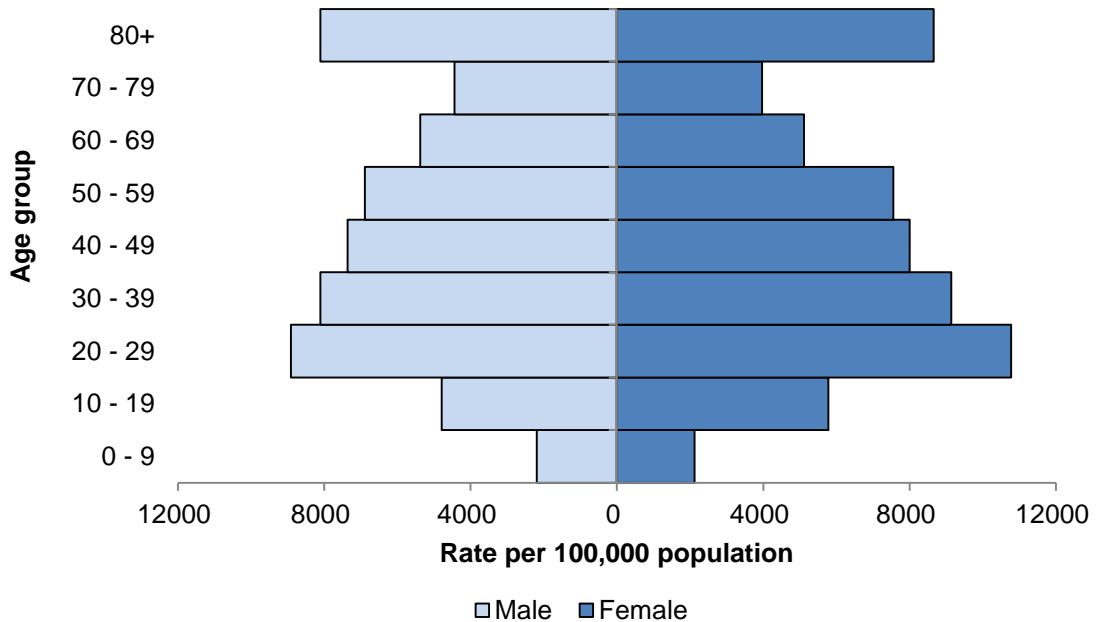
**Figure 1. Laboratory confirmed COVID-19 cases by epidemiological week and source (HSC Laboratory testing and the National Testing Programme), 2020-21**

Figure 1 represents the number of new weekly cases reported to the PHA (bars) and the cumulative number of cases (dashed line). Reporting is likely to be incomplete for the most recent week due to natural delays in samples reaching the labs, being tested and the information being reported. From week 40 there was an initial increase in cases, peaking at week 42 and followed by a decrease to week 45. The number of weekly cases peaked in week 53.

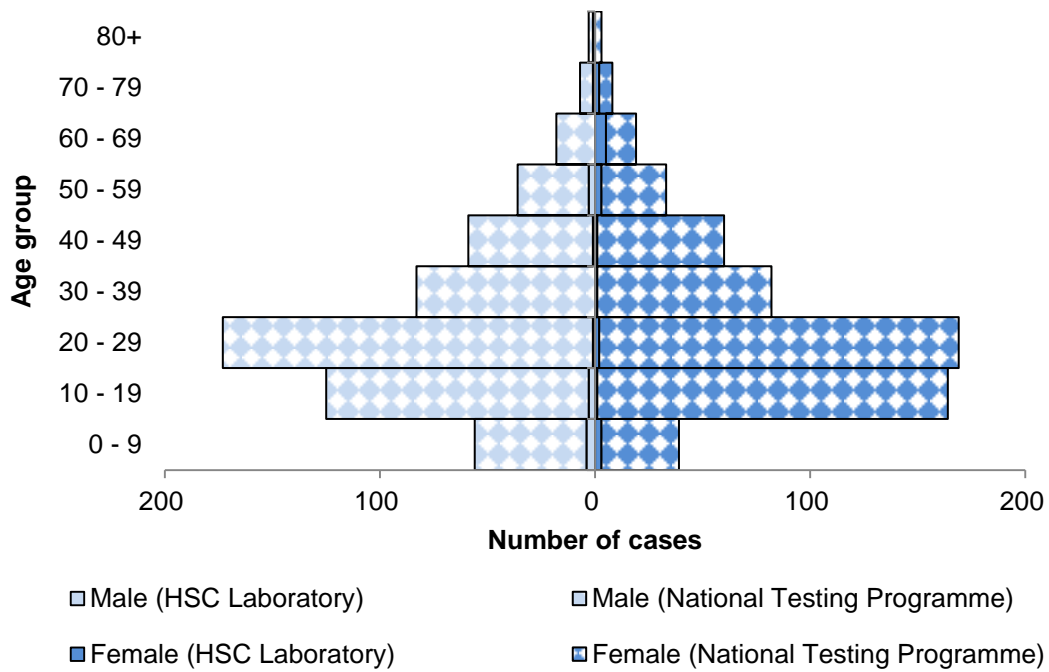
Although there has been a general downward trend in the number of weekly cases since week 53, there have been fluctuations in recent weeks. There has now been an increase in the number of weekly cases since week 21.



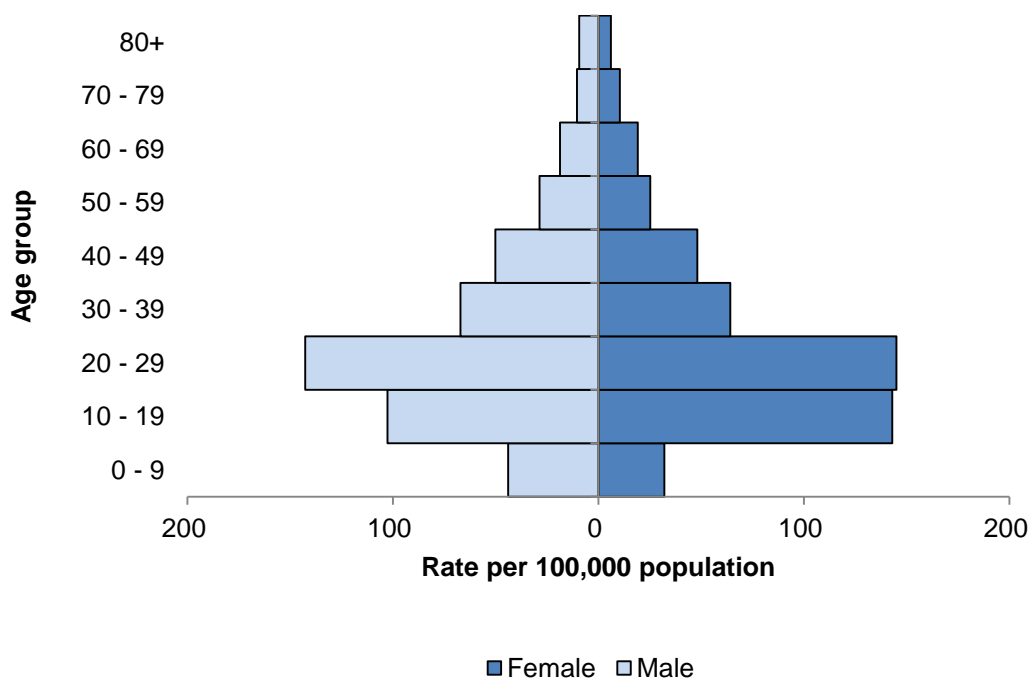
**Figure 2. Laboratory confirmed cases, by age, sex and source (HSC Laboratory testing and the National Testing Programme), 2020-21**



**Figure 3. Laboratory confirmed cases per 100,000 population, by age and sex, for all testing data combined, 2020-21**



**Figure 4. Laboratory confirmed cases, by age, sex and source (HSC Laboratory testing and the National Testing Programme), for weeks 22 and 23**



**Figure 5. Laboratory confirmed cases per 100,000 population, by age and sex, for all testing data combined, for weeks 22 and 23**

Figures 2 and 3 represents the cumulative number of cases reported by HSC laboratories and the National Testing Programme, and overall case rates per 100,000 population, respectively. HSC laboratory cases were mainly detected at the beginning of the pandemic in hospital settings, resulting in higher cases and rates among the older age groups. With the introduction of the National Testing Programme it has become the main source of case data as a result of enhanced community testing, which has enabled detection of a greater spectrum of disease. From this data we have seen a higher number of cases among the 20-29 age group.

Figures 4 and 5 show similar findings to the cumulative numbers but restricted to the previous two epidemiological weeks. These show how the age groups of cases in the most recent weeks differ from the overall cumulative cases presented in figures 2 and 3; in particular the lower case rates in older age groups in recent weeks. Also, more cases are being detected outside of hospital settings as part of the National Testing Programme.

Table 1. Total laboratory confirmed COVID-19 cases, by sex, for all testing data combined			
Age group	Sex		
	Male	Female	Total*
0 - 9	2,794	2,582	5,376
10 - 19	5,832	6,636	12,468
20 - 29	10,801	12,545	23,346
30 - 39	10,024	11,678	21,702
40 - 49	8,648	9,967	18,615
50 - 59	8,664	9,891	18,555
60 - 69	5,187	5,077	10,264
70 - 79	2,974	3,025	5,999
80+	2,582	4,309	6,891
Unknown	-	2	2
<b>Total</b>	<b>57,506</b>	<b>65,712</b>	<b>123,218</b>

\*Unknown sex for 28; these are not included in the total figures

Table 2. Laboratory confirmed COVID-19 cases, by Trust				
Trust Area	Epidemiological Week			
	21	22	23	Total
Belfast	4	9	3	5,719
Northern	10	2	0	4,198
South Eastern	0	2	1	2,467
Southern	3	1	5	3,191
Western	4	2	7	1,677
Other*	435	478	630	105,909
Unknown	-	-	-	85
<b>Northern Ireland</b>	<b>456</b>	<b>494</b>	<b>646</b>	<b>123,246</b>

\*Other cases includes those from the National Testing Programme, NIAS, private nursing home residents, pathology services, GPs and hospices

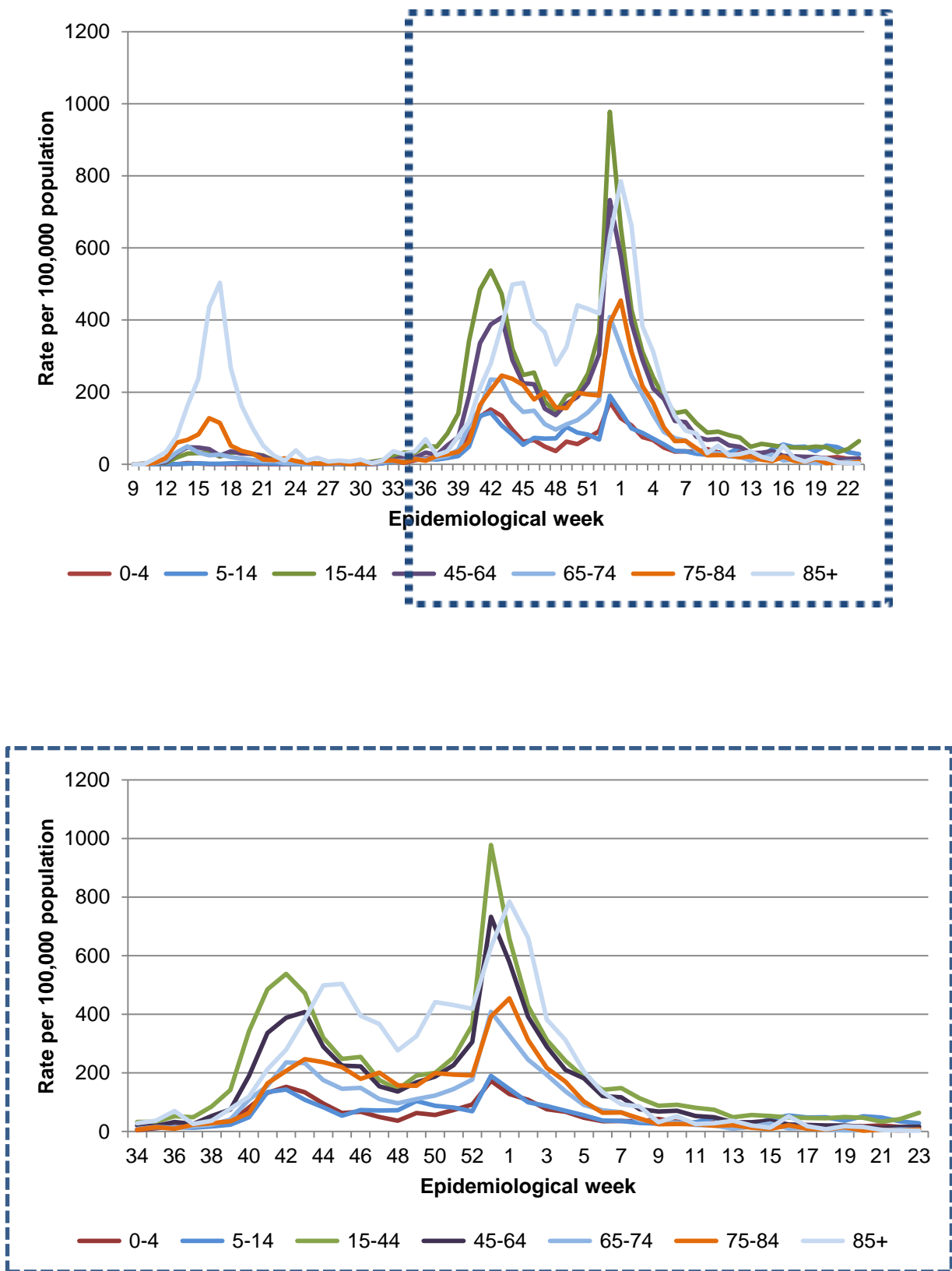
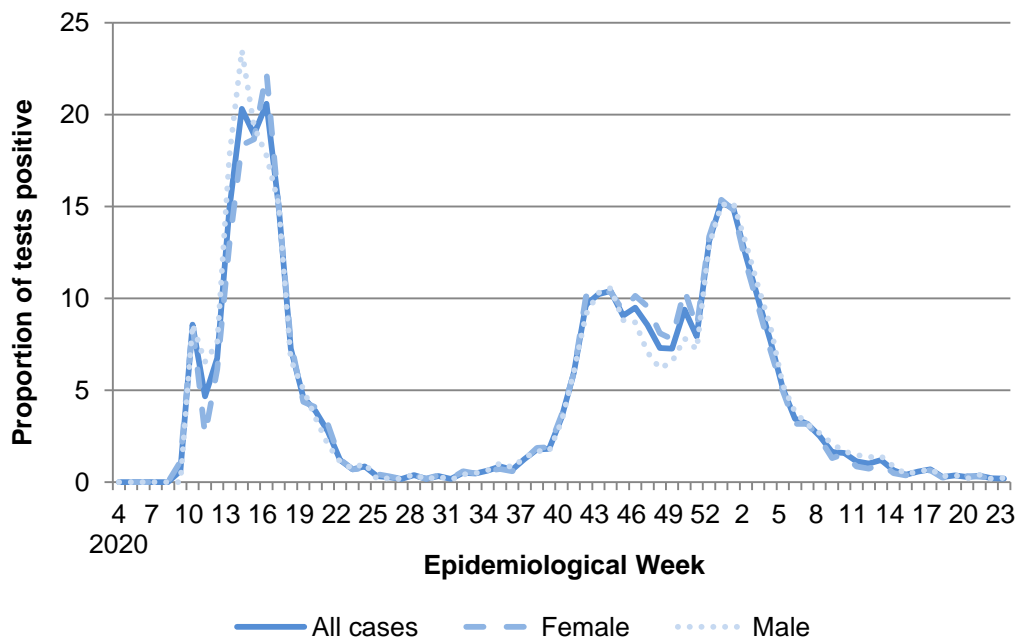


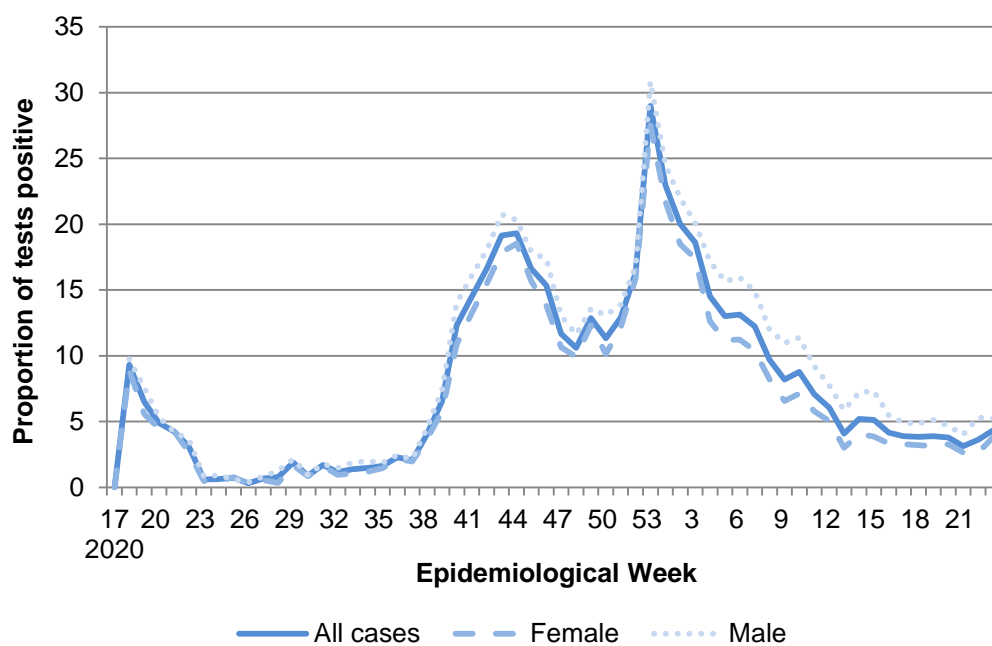
Figure 6. Weekly laboratory confirmed case rates per 100,000 population, by age group, for all testing data combined, 2020-21

The case rates decreased in week 23 compared to the previous week in the 5-14 and 65-74 age groups, and remained the same in the 85+ age group. The case rates increased in the remaining age groups. The highest case rates were seen in the 15-44 age group (64.1 per 100,000). This is lower than the peak of 970.1 per 100,000 in the 15-44 age group in week 53 (27 December 2020-03 January 2021).

In week 23, positivity was highest in the 15-44 age group (5.1%). The lowest positivity was observed in the 85+ age group (0.1%).

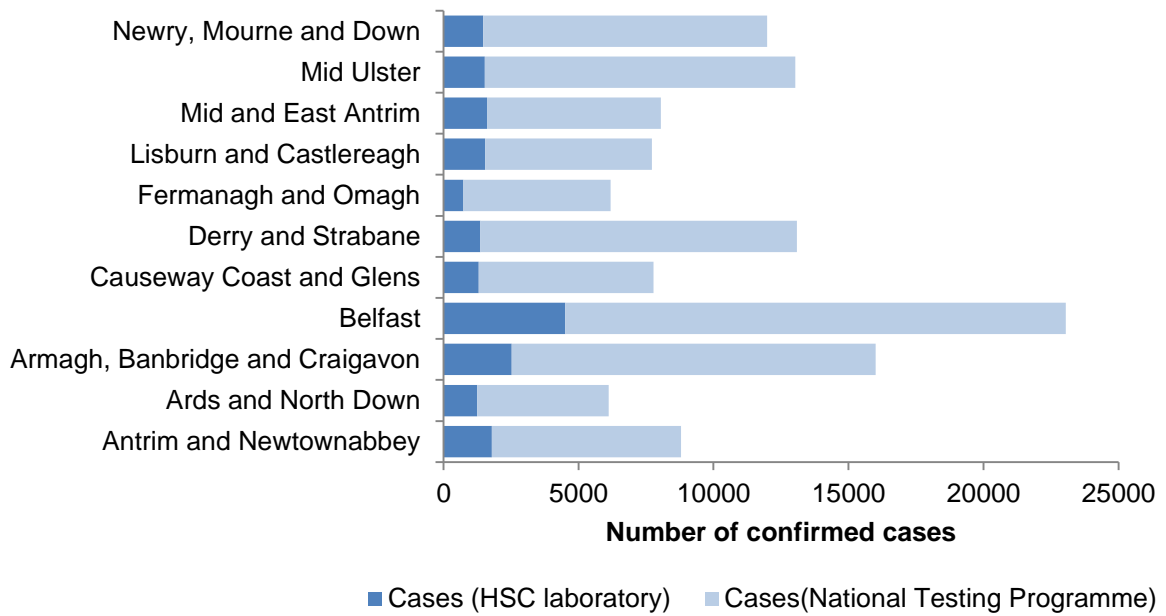


**Figure 7. Positivity (%) of laboratory confirmed COVID-19 cases by epidemiological week, overall and by sex (HSC Laboratory testing), 2020-21**

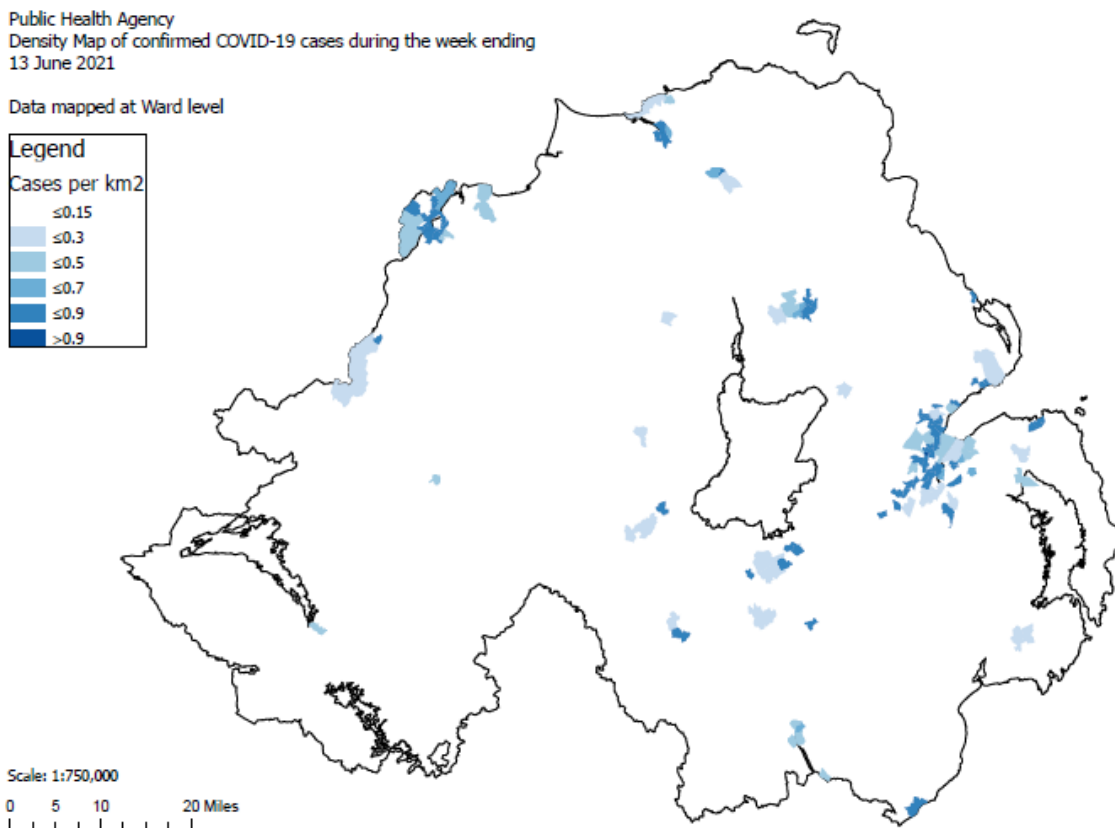


**Figure 8. Positivity (%) of laboratory confirmed COVID-19 cases by epidemiological week, overall and by sex (National Testing programme), 2020-21**



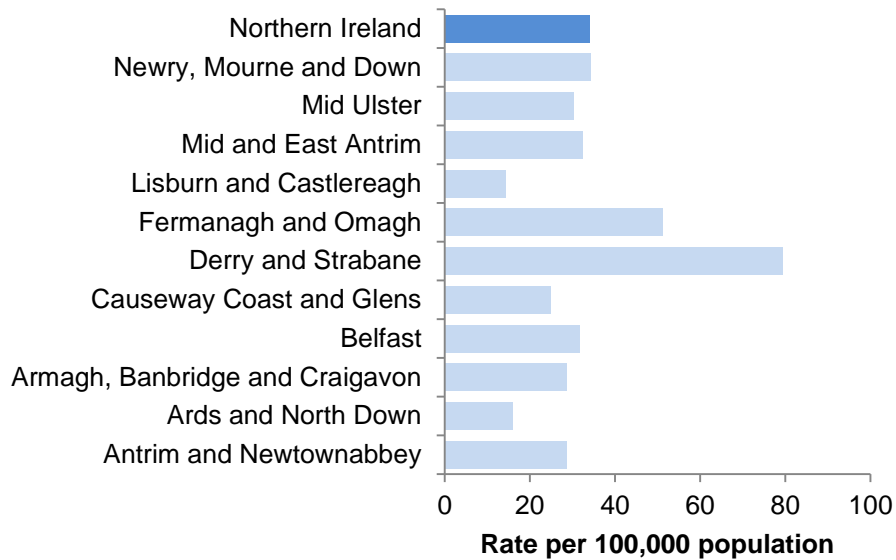
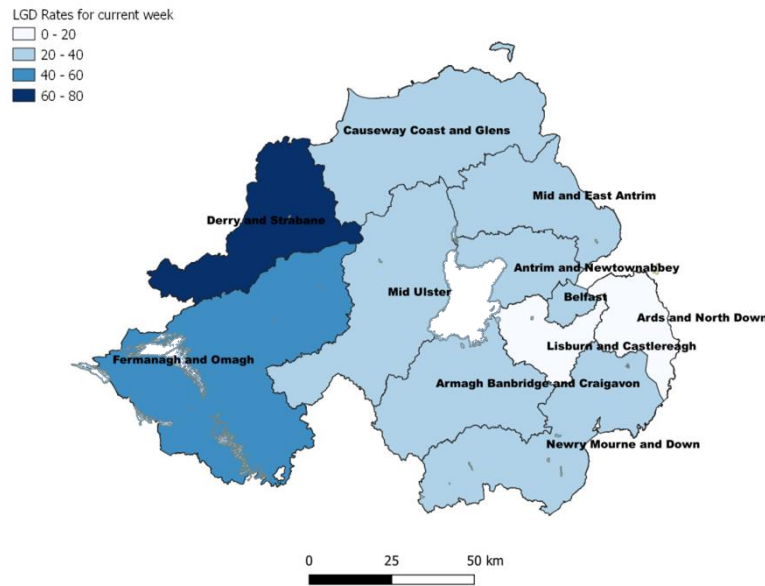


**Figure 9. Total laboratory confirmed cases, by Local Government District (LGD) and source (HSC Laboratory testing and the National Testing Programme), 2020-21**



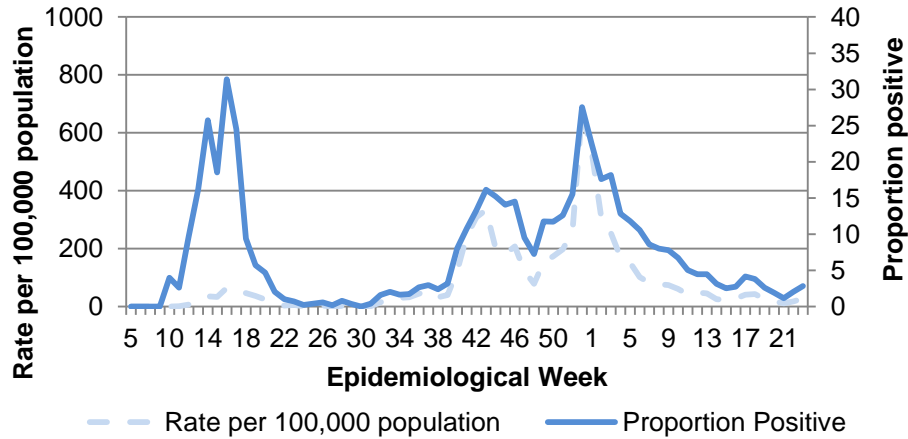
**Figure 10. Density map of confirmed COVID-19 cases, for all testing combined, 2020-21**

Figure 10 shows a density map based on the number of confirmed COVID-19 cases in week 23, in which data is aggregated at Ward level. The coloured shading on the map indicates density of cases, with the darkest shade of blue indicating where there is the greatest density of cases. However, information should be interpreted with caution as identified rates are based on testing which is not evenly spread across the region.

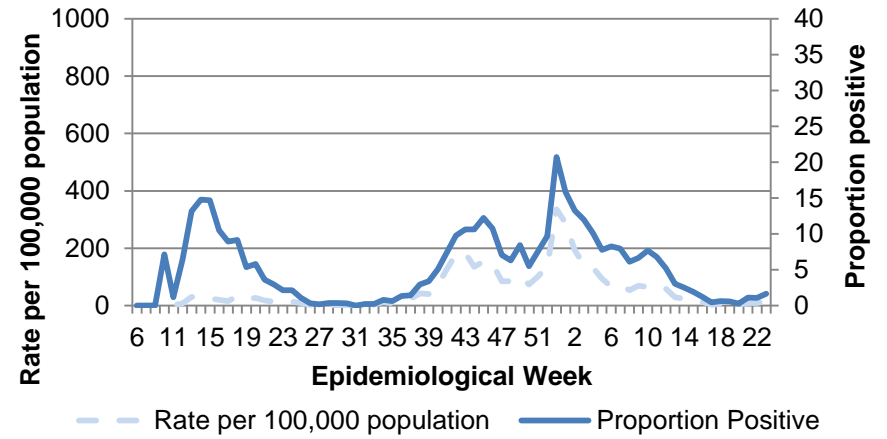


**Figure 11. Total laboratory confirmed cases per 100,000 population, by Local Government District (LGD), for all testing data combined, week 23 (07 - 13 June 2021)**

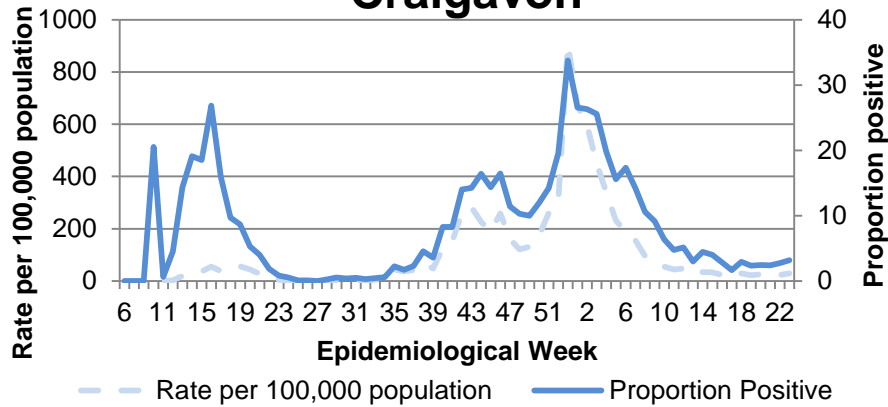
### Antrim and Newtownabbey



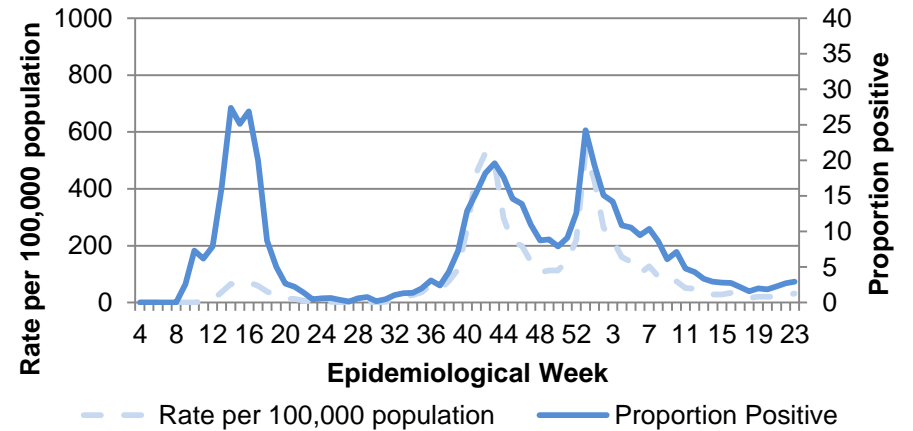
### Ards and North Down



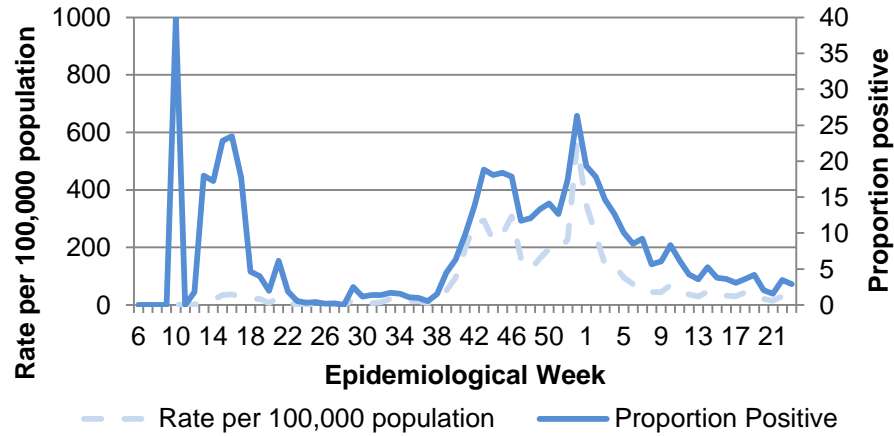
### Armagh, Banbridge and Craigavon



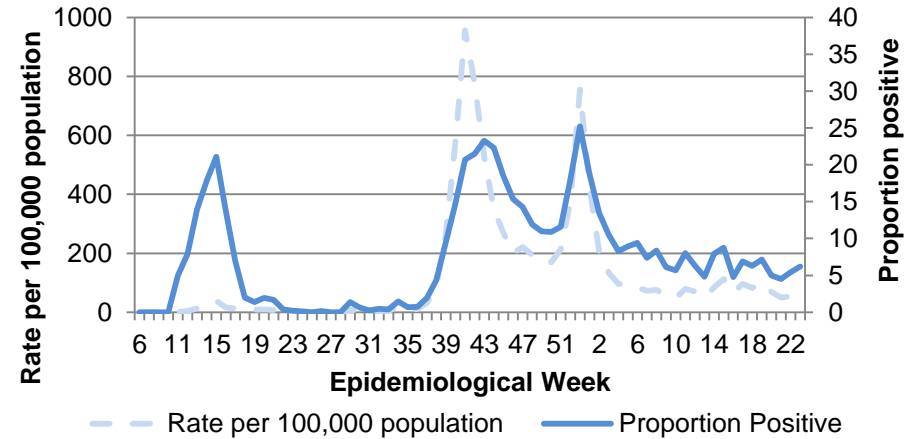
### Belfast



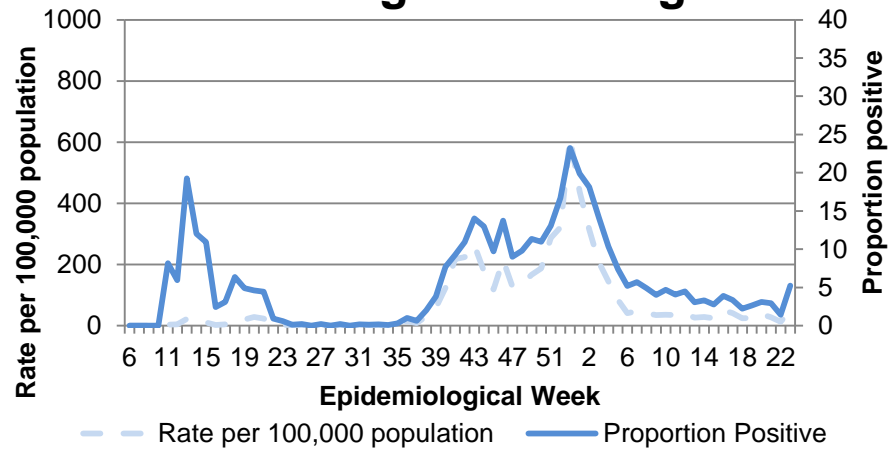
### Causeway Coast and Glens



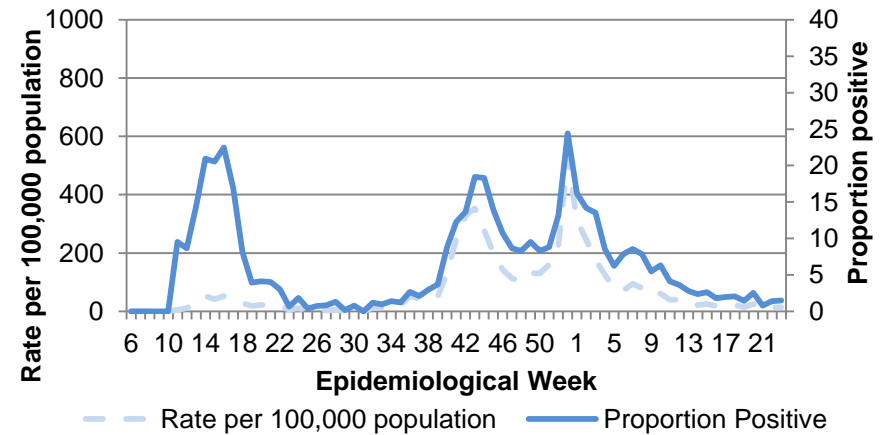
### Derry and Strabane



### Fermanagh and Omagh



### Lisburn and Castlereagh



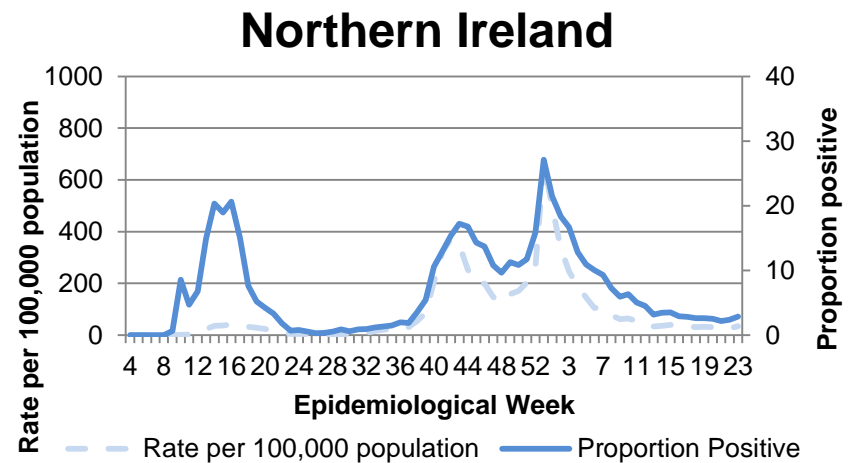
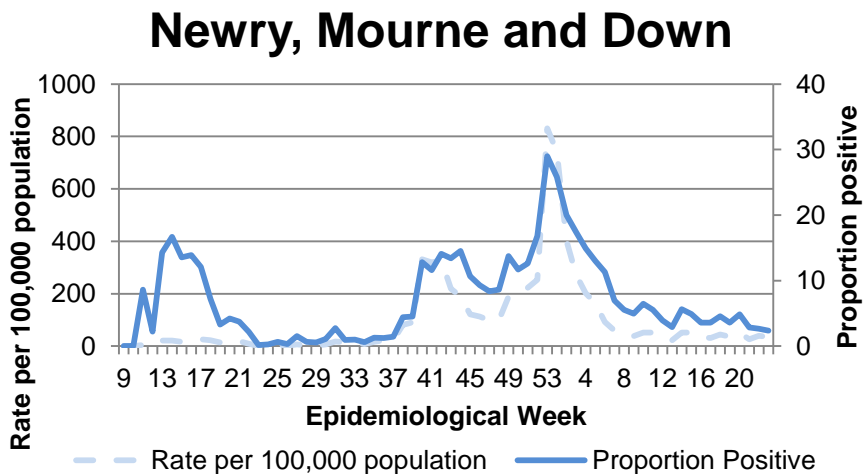
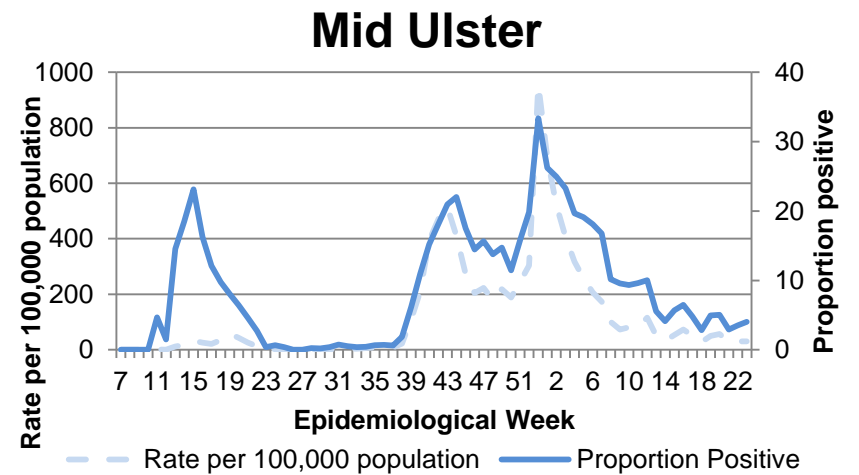
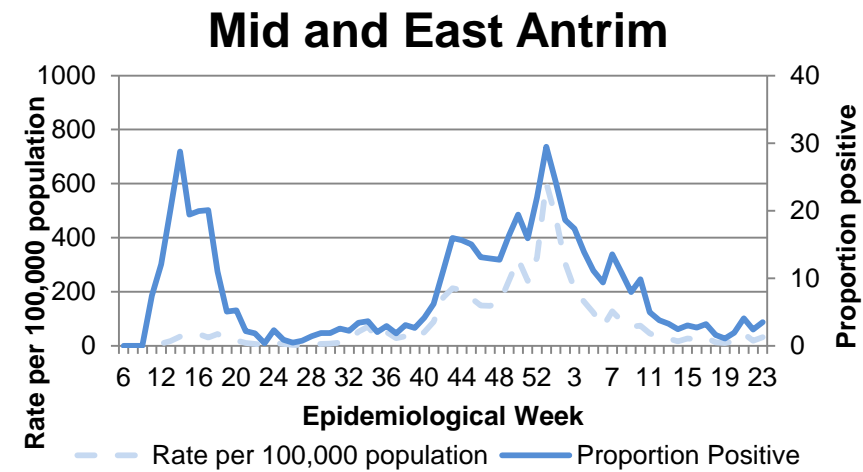


Figure 12. Weekly laboratory confirmed cases per 100,000 population and proportion positive, by Local Government District (LGD) and Northern Ireland, for all testing data combined, 2020-2021

The case rates decreased in Causeway Coast and Glens and Newry Mourne and Down in week 23 compared to week 22. Case rates remained the same in Mid Ulster and increased in all other areas. Derry and Strabane had the highest rate in week 23 compared to other Local Government Districts (79.3 per 100,000 population). The overall NI rate increased from 26.1 to 34.1 per 100,000 population between weeks 22 and 23.

The highest positivity occurred in Derry City and Strabane (6.2%). NI's proportion positive in week 23 was 2.9%, an increase from 2.4% in week 22. This is lower than the peak positivity of 26.4% reported across NI in week 53 (27 December 2020 – 03 January 2021).

*Source: HSC Trust laboratory reports and the National Testing Programme*

## Deprivation

An analysis of COVID-19 related health inequalities relating positive test cases and COVID-19 related admissions between the most and least deprived areas of NI, including variations across age, sex and urban and rural areas was [published](#) by Department of Health on 16 December 2020.

## Care home outbreaks

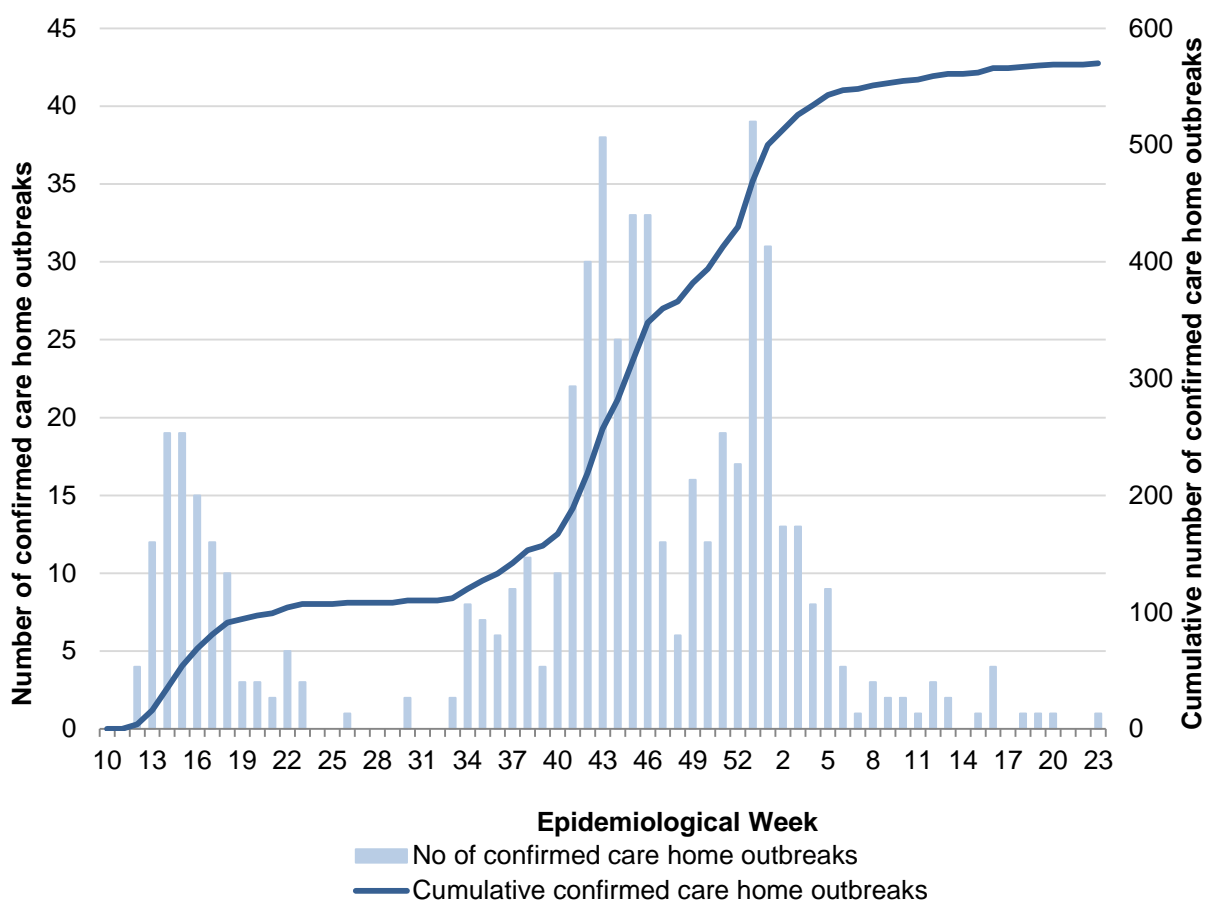
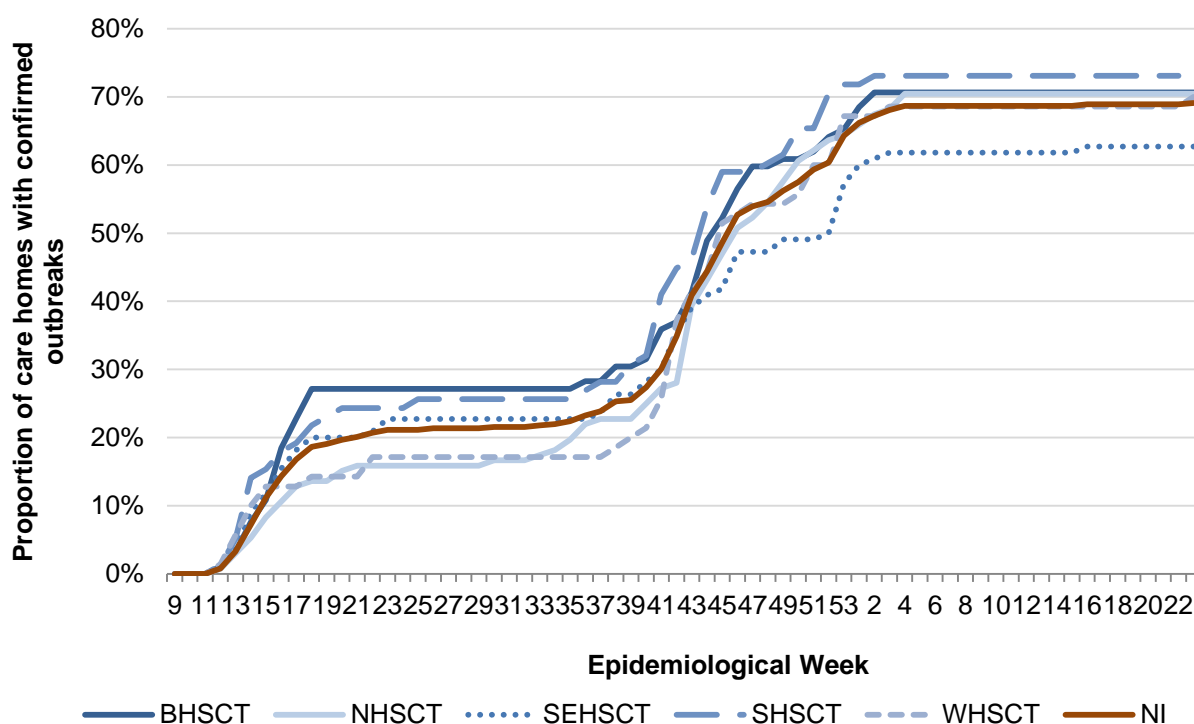


Figure 13. Confirmed COVID-19 care home outbreaks in Northern Ireland, 2020-21



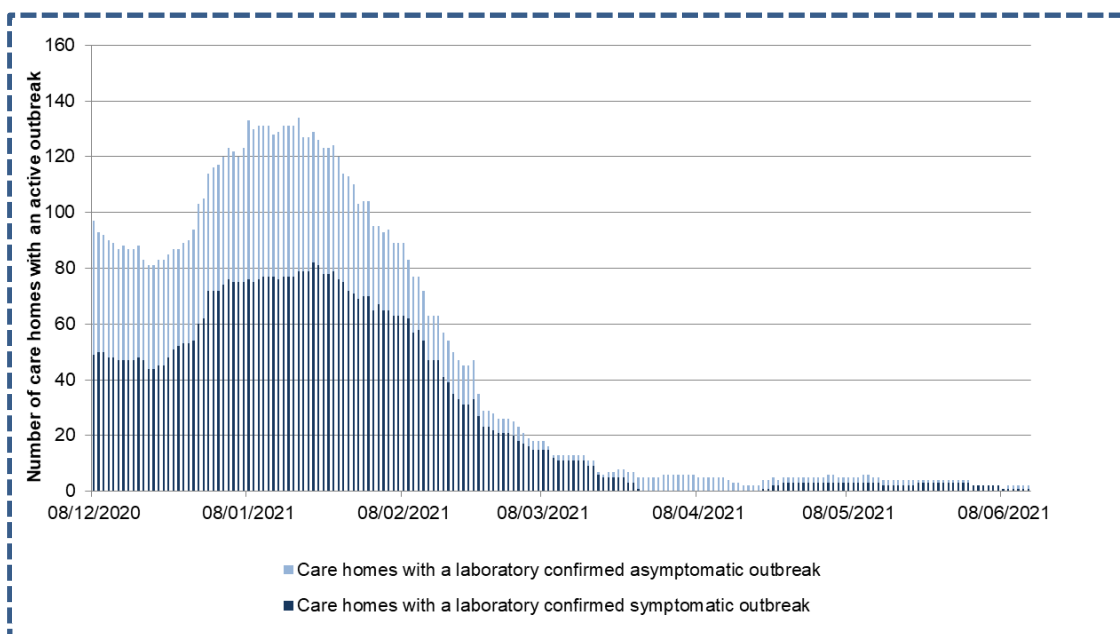
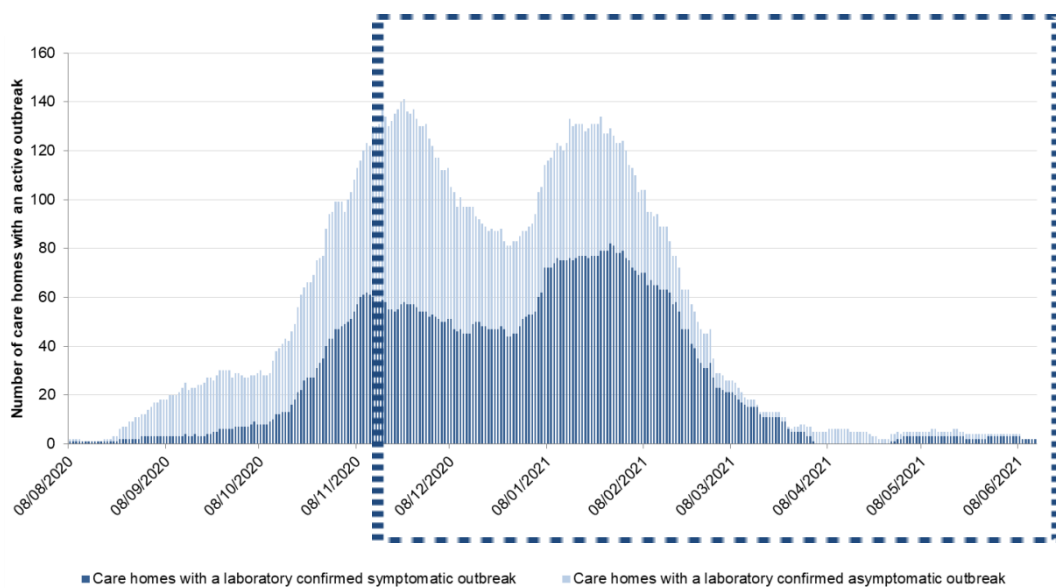
**Figure 14. Proportion of care homes with confirmed COVID-19 in Northern Ireland by Trust area, 2020-21**

Table 3. Proportion of care homes with confirmed COVID-19 outbreaks in Northern Ireland, by Trust Area			
Trust Area	Cumulative total of care homes with outbreaks in 2020-21	% of care homes with outbreaks	Total number of care homes
<b>Belfast</b>	65	70.7%	92
<b>Northern</b>	93	70.5%	132
<b>South Eastern</b>	69	62.7%	110
<b>Southern</b>	57	73.1%	78
<b>Western</b>	49	70.0%	70
<b>Northern Ireland</b>	333	69.1%	482

*\*Please note the total number of care homes has been updated and may differ when compared to previous weeks*

To week 23, a total of 570 confirmed COVID-19 care home outbreaks were reported, involving 333 care homes (69.1% of all NI care homes). The highest proportion of care homes with confirmed COVID-19 outbreaks (73.1%) were reported from the Southern Trust area.





**Figure 15. Number of care homes with a confirmed active symptomatic or asymptomatic COVID-19 outbreak<sup>6</sup> in Northern Ireland, 2020-21**

*Source: PHA Health Protection duty room reports from care homes*

<sup>6</sup> PHA began recording confirmed Covid-19 outbreaks as either symptomatic or asymptomatic on 1 August 2020. This means the numbers represented on the graph may not equal the total active confirmed COVID-19 outbreaks. Confirmed COVID-19 outbreaks reported prior to 1 August 2020 and are still ongoing are not included in this graph. Additionally, other respiratory outbreaks are not included.

## Sentinel testing

Table 4. COVID-19 activity in Northern Ireland Sentinel GP Practices*, week 23, 2021			
Period	Individuals tested	Number positive	Proportion positive
Current week	24	0	0%
<b>Total</b>	<b>1,118</b>	<b>40</b>	<b>3.6%</b>

\*Sentinel testing started 27 April 2020; excludes care home residents and healthcare workers

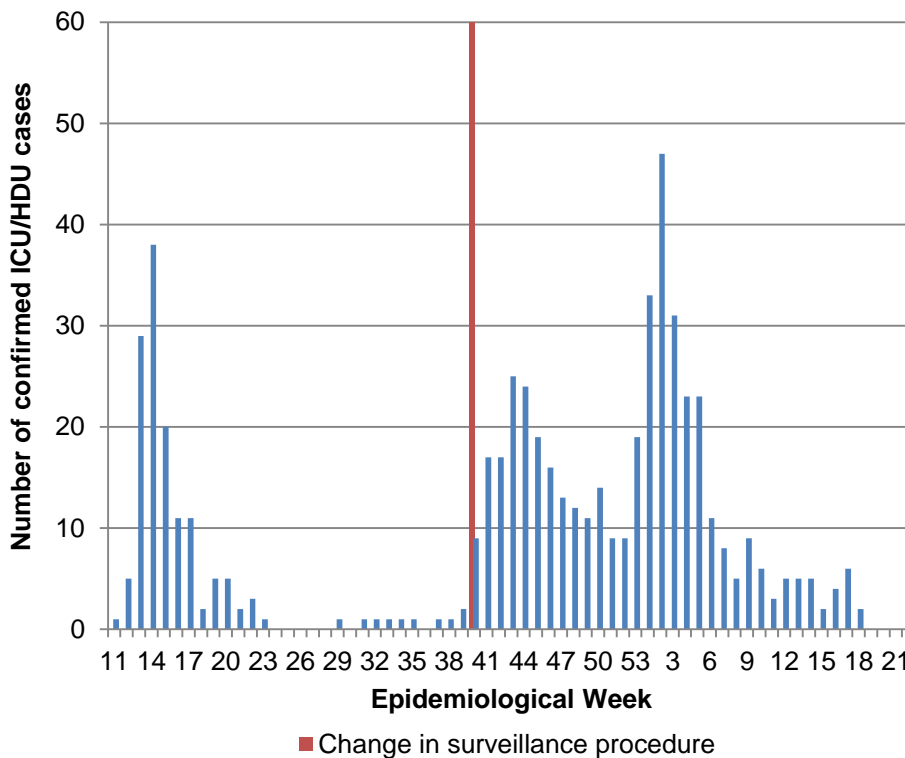
## COVID centre testing

Table 5. COVID-19 activity in Northern Ireland COVID Centres*, week 23, 2021			
Period	Individuals tested	Number positive	Proportion positive
Current week	-	-	N/A
<b>Total</b>	<b>864</b>	<b>14</b>	<b>1.6%</b>

\* One COVID centre operational from 15 June 2020 (BHSC); virology data in table above from 1 July 2020. Data provided from the COVID centre directly reported 182 individuals tested between 15 June and 30 June 2020 inclusive. All results were negative. This data is subject to change as we continue to quality assure the COVID centre information against virology.

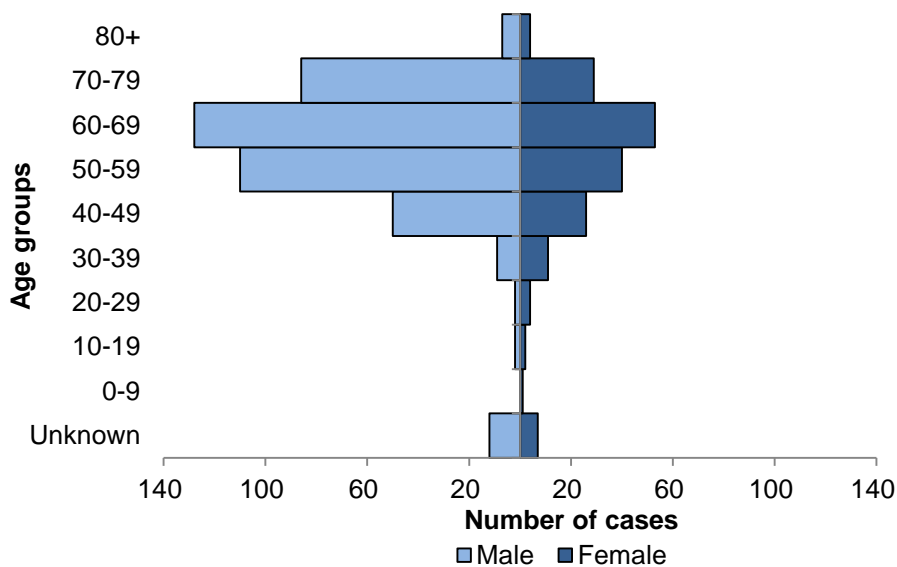
Source: HSC Trust laboratory reports and the National Testing Programme

## Critical care surveillance



\*Since start of week 40 (28 September 2020), data collection for critical care surveillance has been streamlined to coincide with the well-established surveillance of influenza patients in critical care in conjunction with the Critical Care Network Northern Ireland (CaNNI). For weeks 11-40 in 2020, Epidemiological week refers to the week the positive specimen was obtained. Post week 40 it refers to the week in which the individual was admitted to ICU.

**Figure 16. ICU/HDU COVID-19 cases by sample result week, 2020-21**



**Figure 17. ICU/HDU COVID-19 cases, by age and sex, 2020-21**

To week 23, there have been 585 individuals admitted to critical care with confirmed SARS-CoV2 reported to the PHA. Week 2 had the highest number of ICU reports with a positive result (n=47). Of the 585 individuals 69.4% (n=406) were male. The ages ranged from <1 year to 90 years, with a median age of 61 years.

*Source: PHA COVID-19 critical care surveillance online reporting system and the Critical Care Network Northern Ireland (CaNNI)*

The Intensive Care National Audit and Research Centre (ICNARC) publish a report on patients critically ill with COVID-19 (<https://www.icnarc.org/Our-Audit/Audits/Cmp/Reports>). There is also a specific report which can be downloaded presenting analysis of data on patients critically ill with confirmed COVID-19 reported to ICNARC up to 23:59 on 02 June 2021 from critical care units in NI participating in the Case Mix Programme (the national clinical audit for adult critical care).

## School Surveillance

Information on school COVID-19 incidents is based on situations reported to PHA COVID-19 School Team.

These include:

- **Single confirmed case** of COVID-19 in a student or member of staff in the school setting.

The incident is closed after 14 days if there have been no further cases.

- **Cluster of two or more confirmed cases** of COVID-19 (in a student or member of staff in the school setting within a 14 day period).

The incident is closed after 14 days if there have been no further cases from the last case

The PHA COVID-19 School Team carries out contact tracing of cases that attend a school in collaboration with PHA Test and Trace Programme. Clusters are also further investigated by the School Team in liaison with local partners.

Data are collected on the number of COVID-19 school incidents reported to the PHA COVID-19 School Team since schools reopened on 24 August 2020.

The number of cases that have been reported by schools to the PHA School Team is also included in this section to provide high level information on cases broken down by pupil and staff status. It is important to note that the definitive source for the number of COVID-19 confirmed cases in school aged children is from the HSC Laboratory testing and the National Testing Programme. Direct comparisons should not be made with laboratory data as the School Team's figures may provide an underestimate of laboratory data.

Table 6 shows the number of school incidents by type of school that have been reported to the PHA School Team up to the end of week 23.

The figures are a snapshot of incidents recorded at the time of data extraction. A school may have had more than one incident since opening. Figures should not be compared from week to week as the number will include new reports and further cases of existing incidents.

<b>Table 6. Number of COVID-19 Incidents in Schools</b>		
<b>School Type</b>	<b>Total to Date</b>	<b>Proportion of Total to Date</b>
<b>Preschool</b>	<b>133</b>	<b>5.8%</b>
<b>Primary</b>	<b>1,322</b>	<b>57.2%</b>
<b>Post Primary</b>	<b>703</b>	<b>30.4%</b>
<b>Special</b>	<b>152</b>	<b>6.6%</b>
<b>Total</b>	<b>2,310</b>	

Table 7 shows the number of school incidents by type of school and also type of incident i.e. single case in a 14 day period or cluster of cases within a 14 day period.

Clusters have been further broken down into those with 2 to 5 cases and 6 or more cases.

<b>Table 7. Number of Incidents by School and Incident Type</b>			
<b>Incident Type</b>	<b>School Type</b>	<b>Total to Date</b>	<b>Proportion</b>
<b>Single Case</b>	<b>Preschool</b>	<b>97</b>	<b>8.0%</b>
	<b>Primary</b>	<b>768</b>	<b>63.2%</b>
	<b>Post Primary</b>	<b>271</b>	<b>22.3%</b>
	<b>Special</b>	<b>79</b>	<b>6.5%</b>
	<b>All</b>	<b>1,215</b>	
<b>Cluster(2-5 cases)</b>	<b>Preschool</b>	<b>33</b>	<b>4.1%</b>
	<b>Primary</b>	<b>456</b>	<b>56.3%</b>
	<b>Post Primary</b>	<b>264</b>	<b>32.6%</b>
	<b>Special</b>	<b>57</b>	<b>7.0%</b>
	<b>All</b>	<b>810</b>	
<b>Cluster(&gt;5 cases)</b>	<b>Preschool</b>	<b>3</b>	<b>1.1%</b>
	<b>Primary</b>	<b>98</b>	<b>34.4%</b>
	<b>Post Primary</b>	<b>168</b>	<b>58.9%</b>
	<b>Special</b>	<b>16</b>	<b>5.6%</b>
	<b>All</b>	<b>285</b>	

## Cumulative number of schools affected by at least one case of COVID-19

A school may have had more than one incident since opening on 24 August 2020. Table 8 shows the cumulative number of schools that have had at least one school incident up to the end of week 23.

The 2,310 school incidents have occurred in 944 schools in NI. Overall 63.8% of schools have had at least one COVID-19 case in a pupil or member of staff.

School Type	No. Schools that have had at least one case	Total number of schools in Northern Ireland	Proportion of schools in Northern Ireland that have had at least one case
Preschool	106	457	23.2%
Primary	611	791	77.2%
Post Primary	191	193	99.0%
Special	36	39	92.3%
<b>Total</b>	<b>944</b>	<b>1,480</b>	<b>63.8%</b>

*\*Please note the total number of schools has been updated and may differ when compared to previous weeks*



### Trend of school incidents

The following information includes the number of incidents in schools since they first reopened until the end of week 23 (13 June 2021).

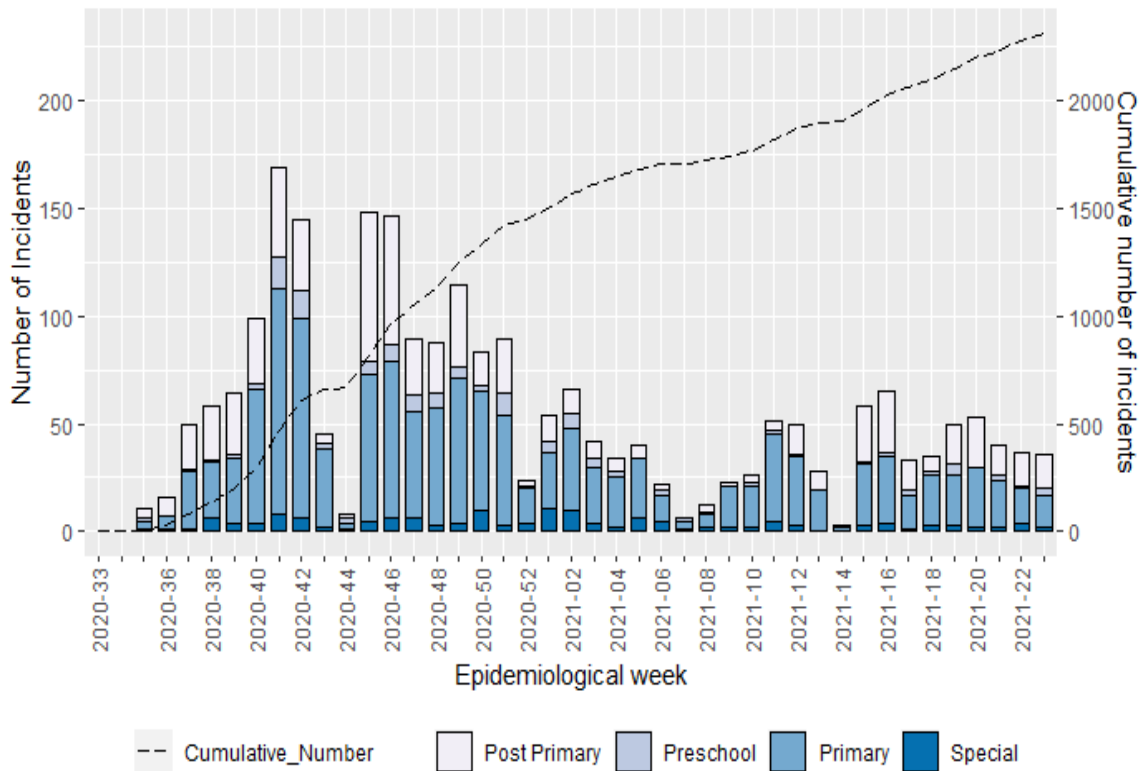
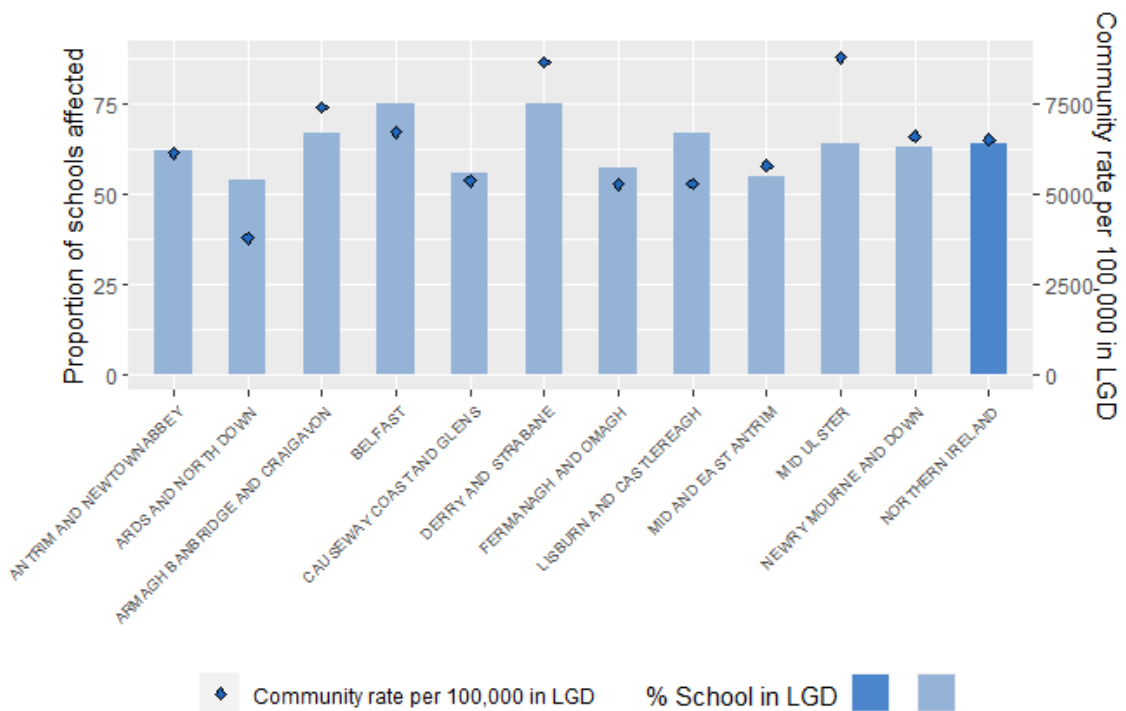


Figure 18. Number of COVID-19 incidents in schools, by school type, week 33 - 23

## Cumulative School Incidents by Local Government District

The following information includes the cumulative number of incidents in schools by LGD since they first reopened until the end of week 23 (13 June 2021).

The cumulative community rate per 100,000 population is also shown in the figure.



**Figure 19. Proportion of schools with a COVID-19 incident and overall background community rate by 100,000 (2020) by Local Government District (LGD)**

## Cumulative number of COVID-19 cases reported by schools to PHA School Team

Since schools opening on 24 August 2020 until the end of week 23 2021, there have been 6,956 confirmed COVID-19 cases that occurred at any point during this time reported by schools to the PHA School Team.

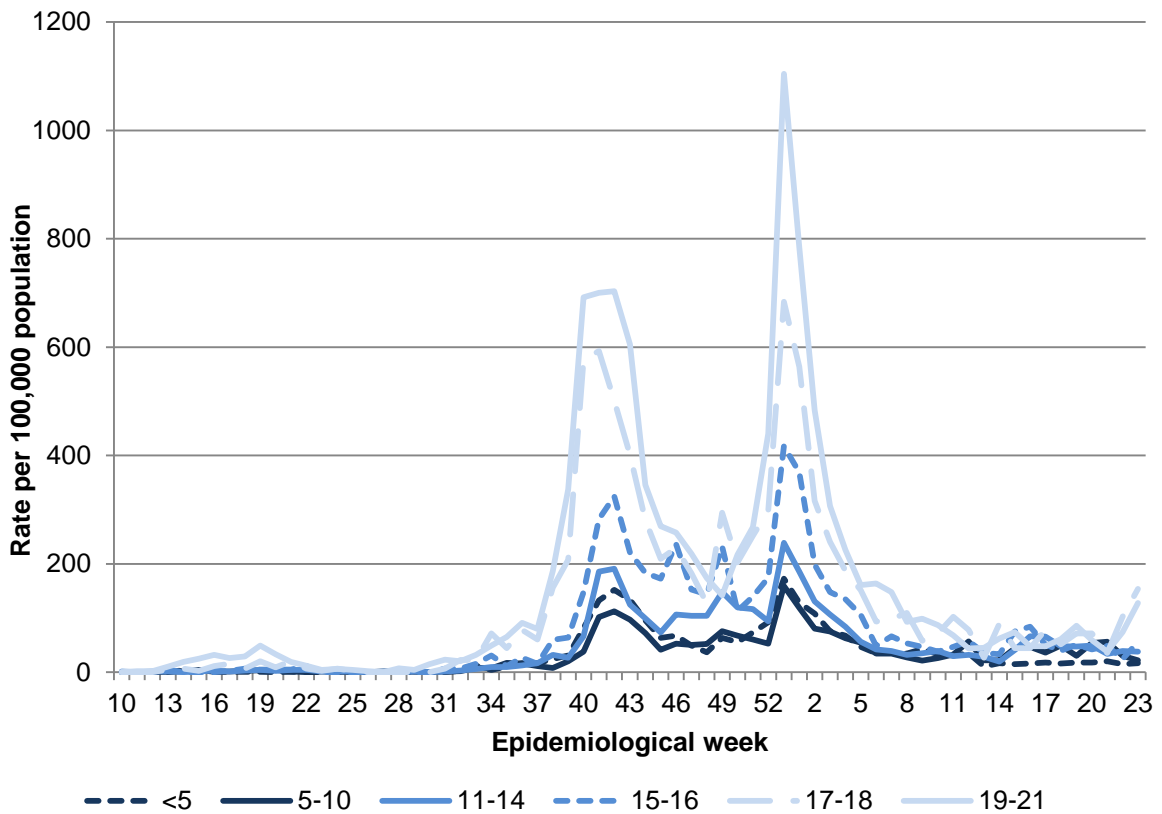
The definitive source for the number of COVID-19 confirmed cases in school aged children is from the HSC Laboratory testing and the National Testing Programme. Direct comparisons should not be made with laboratory data.

Staff member includes teaching and non-teaching staff.

Table 9. Number of COVID-19 cases reported by schools where information is available on pupil / status, up to week 23				
School Type	Pupil Case	Staff Case	Total	Proportion of all cases that are pupils
Preschool	91	118	209	43.5%
Primary	1,866	1,150	3,016	61.9%
Post Primary	2,657	692	3,349	79.3%
Special	130	252	382	34.0%
<b>Total</b>	<b>4,744</b>	<b>2,212</b>	<b>6,956</b>	<b>68.2%</b>

<b>Table 10. Number of COVID-19 cases in school aged children reported by schools where information is available as a proportion of all school age children, up to week 23</b>		
<b>School Type</b>	<b>Pupil Case</b>	<b>Proportion of all school aged pupils in Northern Ireland</b>
<b>Preschool</b>	<b>91</b>	<b>0.03%</b>
<b>Primary</b>	<b>1,866</b>	<b>0.54%</b>
<b>Post Primary</b>	<b>2,657</b>	<b>0.78%</b>
<b>Special</b>	<b>130</b>	<b>0.04%</b>
<b>Total</b>	<b>4,744</b>	<b>1.38%</b>

*Source: PHA COVID-19 School Team, Department of Education school statistics*



**Figure 20. Weekly COVID-19 laboratory confirmed case rates per 100,000 population, by age group, for all testing data combined, in those aged 21 and under, 2020-21**

Compared to week 22, in week 23 case rates for the 5-10 and 11-14 age groups decreased. Case rates increased for the remaining age groups. The 17-18 age group had the highest case rates (153.7 per 100,000), followed by the 19-21 age group (127.4 per 100,000).

*Source: HSC Trust laboratory reports and the National Testing Programme*

## Mortality Surveillance

### Medical Certificate of Cause of Death for confirmed / suspected COVID-19

The Northern Ireland Statistics and Research Agency (NISRA) provide the weekly number of **registered respiratory and COVID-19 deaths each Friday ([here](#))**. In week ending 04 June 2021, the proportion of COVID-19 deaths registered was 0.7%, and from 19 March 2020 to week ending 04 June 2021 the proportion of COVID-19 deaths registered was 13.9%.

Weekly published data are provisional and is based on registrations of deaths, not occurrences. The majority of deaths are registered within five days in NI. Respiratory deaths include any death where terms directly relating to respiratory causes were mentioned anywhere on the death certificate (this includes COVID-19 deaths). This is not directly comparable to the ONS figures relating to 'deaths where the underlying cause was respiratory disease'. Figures relate to all deaths registered up to 04 June 2021 with a mention of COVID-19 on the death certificate. Please note: Where COVID-19 is mentioned in part 1 it may not be the underlying cause of death. COVID-19 deaths include any death where Coronavirus or COVID-19 (suspected or confirmed) was mentioned anywhere on the death certificate. NISRA quarterly statistics provide detail of underlying cause following coding to ICD-10 rules; figures are available [here](#). Figures may be impacted by General Registration Office closures over public holidays.

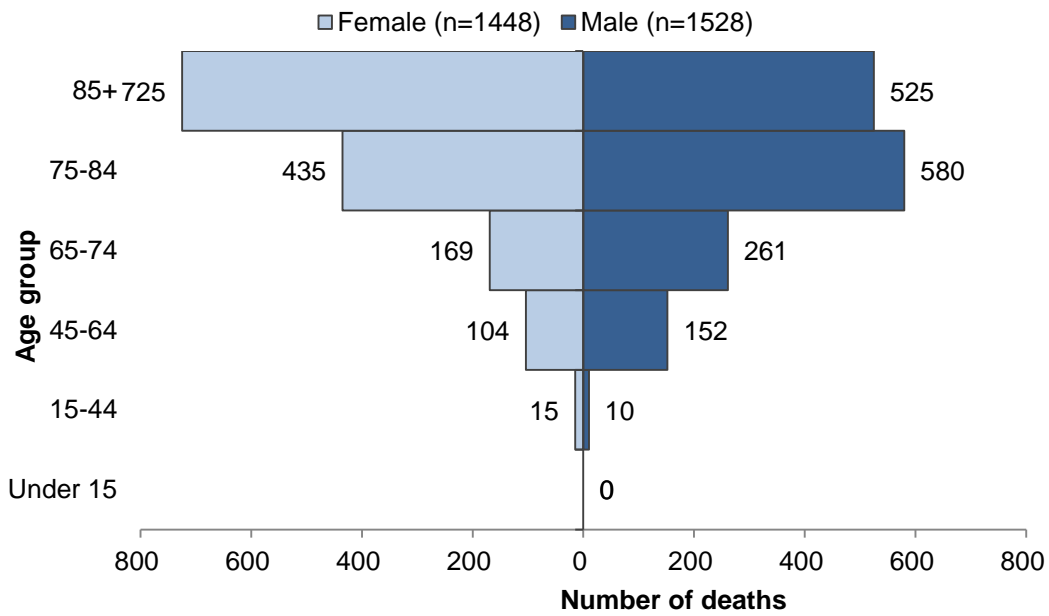
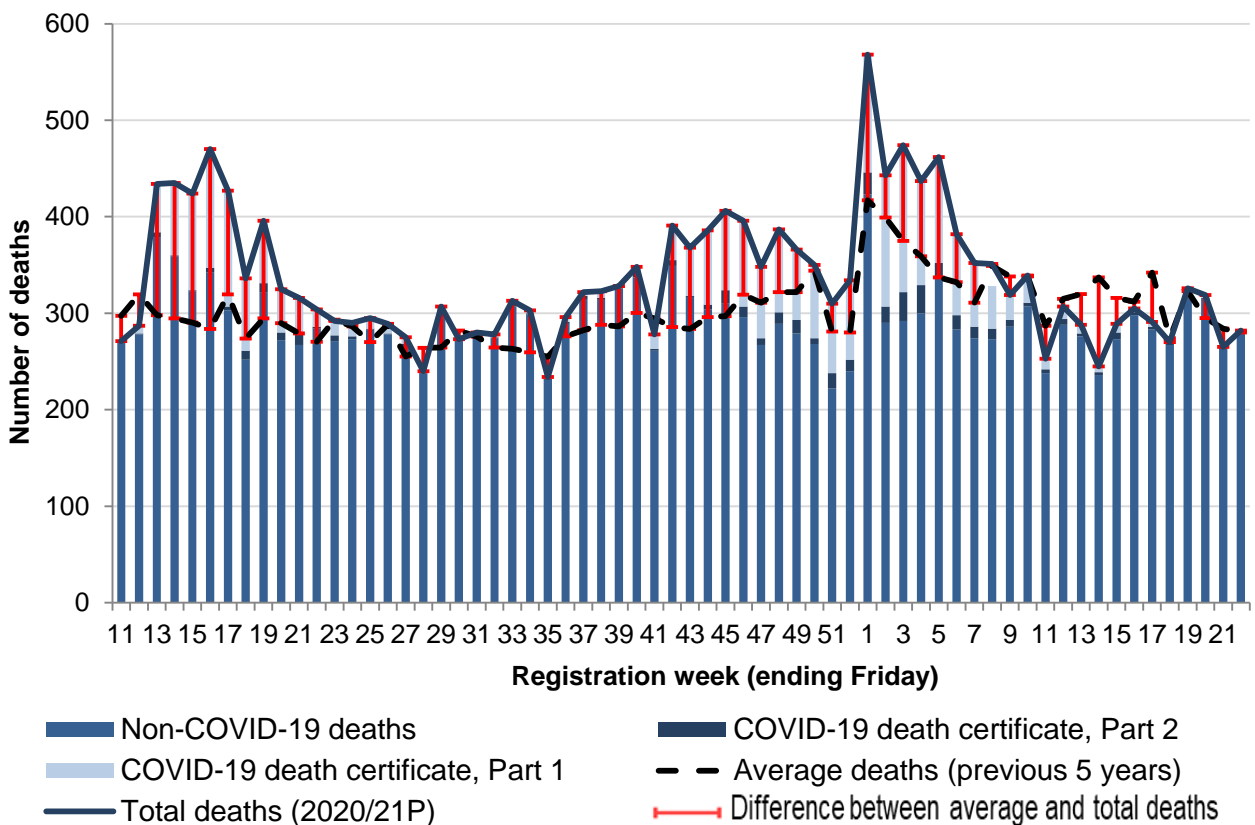


Figure 21. NISRA registered COVID-19 deaths by sex and age group, up to week ending 04 June 2021



Up to week 52, the Average deaths (previous 5 years) period ranged from 2015-2019. From 2021 week 1 onwards, this period ranges from 2016-2020

Figure 22. Northern Ireland registered deaths, including COVID-19 associated deaths, Week 11 (ending 20 March 2020) to Week 22 (ending 04 June 2021)

**Table 11.1 Northern Ireland registered deaths, including COVID-19 associated deaths, Week 11 (ending 20 March 2020) to Week 52 (ending 01 January 2021)**

Registration week (ending Friday)	11	12	13	14	15	16	17	18	19	20	21	22	23	24	25	26	27	28	29	30	31	32	33	34	35	36	37	38	39	40	41	42	43	44	45	46	47	48	49	50	51	52
COVID-19 death certificate, Part 1	0	8	50	75	100	123	120	75	65	45	35	18	15	14	11	10	7	0	6	1	4	3	4	3	2	5	4	7	1	6	15	36	50	77	82	89	74	86	73	76	72	82
COVID-19 death certificate, Part 2	1	1	5	1	1	5	4	9	9	8	14	2	6	3	1	1	2	2	1	0	1	1	2	1	1	2	4	2	1	5	2	6	1	5	14	11	7	12	14	6	16	12
Non-COVID-19 deaths	270	278	379	359	323	342	303	252	322	272	267	284	271	273	283	278	266	238	300	272	275	274	307	299	231	289	314	314	326	337	261	349	317	304	310	296	267	289	279	268	222	240
Average deaths (previous 5 years)	297	320	298	295	290	284	320	274	295	290	279	271	293	286	270	288	255	264	265	282	276	265	263	259	255	276	282	288	286	300	295	286	284	296	297	319	311	322	322	344	281	280
Total deaths (2020)	271	287	434	435	424	470	427	336	396	325	316	304	292	290	295	289	275	240	307	273	280	278	313	303	234	296	322	323	328	348	278	391	368	386	406	396	348	387	366	350	310	334

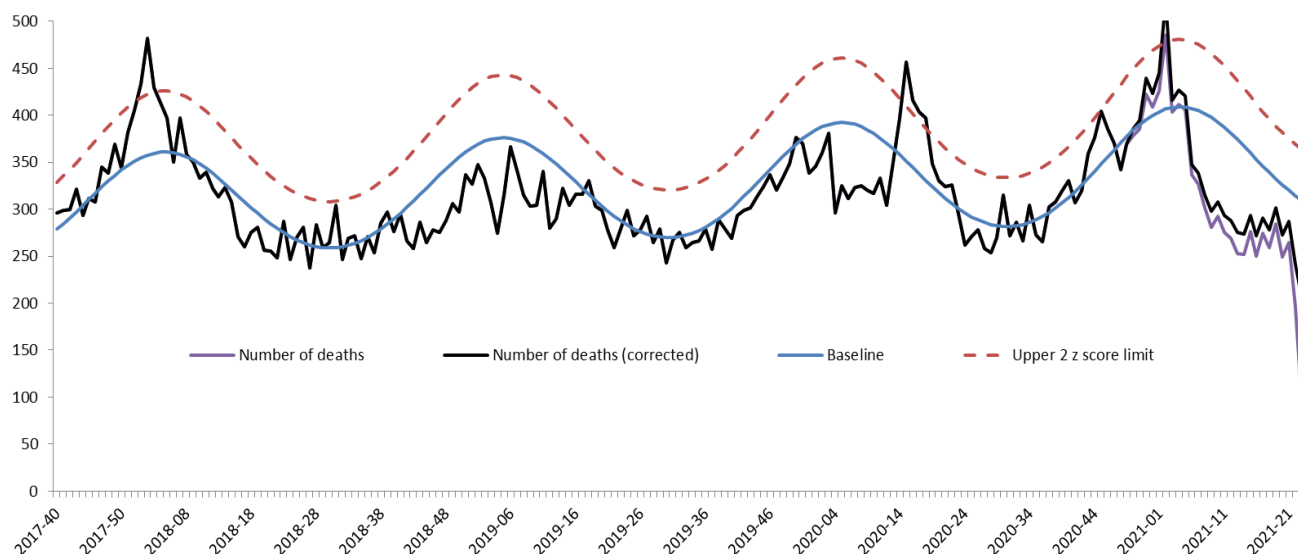
**Table 11.2 Northern Ireland registered deaths, including COVID-19 associated deaths, Week 1 (ending 08 January 2021) to Week 22 (ending 04 June 2021)**

Registration week (ending Friday)	1	2	3	4	5	6	7	8	9	10	11*	12	13	14	15	16	17	18	19	20	21	22
COVID-19 death certificate, Part 1	122	136	152	108	110	84	66	44	26	28	11	16	9	6	9	4	5	2	4	3	2	1
COVID-19 death certificate, Part 2	23	17	30	29	16	15	12	11	7	4	4	3	3	3	7	3	3	1	3	1	1	1
Non-COVID-19 deaths	423	290	292	300	336	283	274	273	286	307	238	288	276	236	273	298	283	267	319	315	263	280
Average deaths (previous 5 years)	417	399	375	359	337	332	311	349	338	338	287	315	320	337	316	312	342	274	323	295	284	280
Total deaths (2021P)	568	443	474	437	462	382	352	351	319	339	253	307	288	245	289	305	291	270	326	319	265	282

Source: Northern Ireland Statistical Research Agency (NISRA)



## All-cause excess deaths

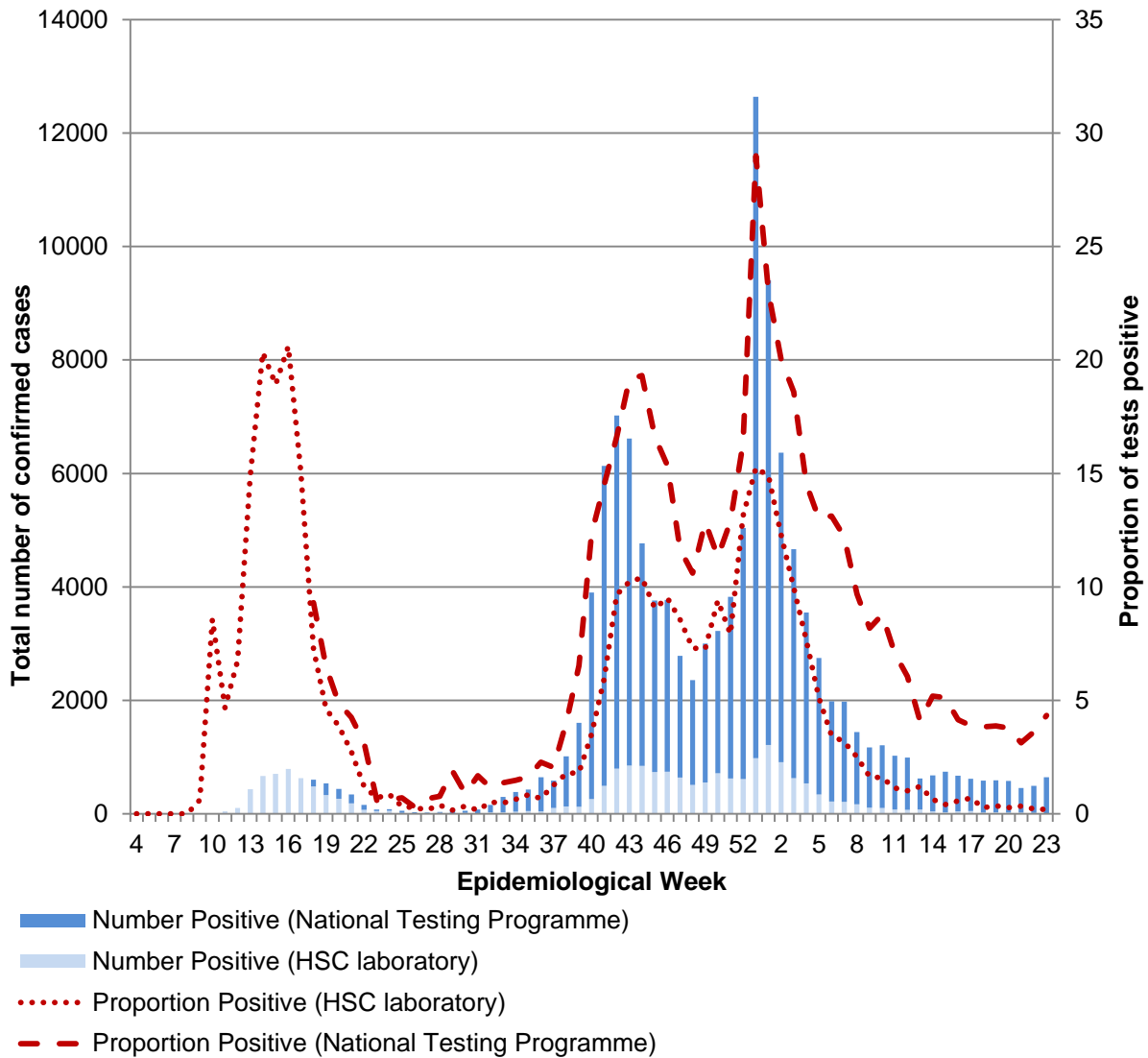


**Figure 23. Weekly observed and expected number of all-cause deaths in all ages, week 40 2017 - week 22 2021**

In 2020, excess all-cause deaths were reported in epidemiological weeks 13 to 20, week 22 and 45. During 2021, excess deaths were reported in week 2 (11 – 17 January). This increase in deaths happened outside the influenza season and at a time when we know flu was not circulating ([here](#)).

While these more recent excesses have occurred within the flu season, [reports](#) show flu was not widely circulating. This suggests the excess mortality may in part be related to COVID-19 deaths and to a fall in presentation to hospital with other conditions (data not shown). Excess deaths were mainly in those over 65 years, which is in line with the age profile of COVID-19 deaths. Despite delay correction, reported mortality data are still provisional due to the time delay in registration and observations which can vary from week to week; not all registrations for the current week will have been included this bulletin.

## Virology testing surveillance



*Total individuals tested include those that were reported as indeterminate*

**Figure 24. Weekly number of individuals tested for COVID-19 and proportion positive, by source (HSC Laboratory testing and the National Testing Programme), 2020-21**

**Table 12. COVID-19 activity in Northern Ireland, for all testing data combined, week 23, 2021**

Period	Individuals tested	Number positive	Proportion positive
Current week	22,433	646	2.9%
<b>Total</b>	<b>1,388,643</b>	<b>123,246</b>	<b>8.9%</b>

**Table 13. COVID-19 activity in Northern Ireland (HSC laboratory), week 23, 2021**

Period	Individuals tested	Number positive	Proportion positive
Current week	7,894	16	0.2%
<b>Total</b>	<b>429,468</b>	<b>19,877</b>	<b>4.6%</b>

**Table 14. COVID-19 activity in Northern Ireland (National Testing Programme), week 23, 2021**

Period	Individuals tested	Number positive	Proportion positive
Current week	14,539	630	4.3%
<b>Total</b>	<b>959,175</b>	<b>103,369</b>	<b>10.8%</b>

*Source: HSC Trust laboratory reports and the National Testing Programme*

To week 23, the total number of individuals tested was 1,388,643 and positivity was 8.9%. Overall, more individuals have now been tested as part of the National Testing Programme, and positivity is now higher (10.8%) compared to HSC laboratories (4.6%).

## Global situation

As of 16 June, [WHO](#) has been notified of 176,156,662 confirmed cases of COVID-19, including 3,815,486 related deaths.

## Appendix

### PHA Health Protection COVID-19 surveillance systems

The PHA Health Protection Directorate has established the following surveillance systems to monitor COVID-19 activity across the spectrum of community and health care settings. As new systems are developed they will be added to this report.

### Case epidemiology

SARS-CoV2 testing was first developed by the National Reference Laboratory (Public Health England) for all of the United Kingdom on 24 January 2020. On 7 February 2020, SARS-CoV2 testing was developed locally by the Regional Virus Laboratory, Belfast Health and Social Care (HSC) Trust and performed testing across NI. Since 23 March, 28 March, 3 April and 13 May respectively, Northern HSC Trust, Southern HSC Trust, Western HSC and South Eastern HSC Trust laboratories, have been performing SARS-CoV2 testing.

The PHA Health Protection Directorate laboratory surveillance system collates SARS-CoV2 laboratory data on all tests from HSC Trust laboratories.

As an individual may have more than one test for clinical purposes, the laboratory data is then collated to enable monitoring of individuals rather than tests performed by laboratories. This is done using the Organism-Patient-Illness-Episode (OPIE) principle, a standard approach used across the UK.<sup>7</sup> The episode length used nationally is 6 weeks (42 days), and is being reviewed as more data becomes available.

---

<sup>7</sup> Public Health England. 2016. Laboratory reporting to Public Health England: A guide for diagnostic laboratories. [ONLINE] Available at: [https://assets.publishing.service.gov.uk/government/uploads/system/uploads/attachment\\_data/file/739854/PHE\\_Laboratory\\_Reporting\\_Guidelines.pdf](https://assets.publishing.service.gov.uk/government/uploads/system/uploads/attachment_data/file/739854/PHE_Laboratory_Reporting_Guidelines.pdf). [Accessed 21 April 2020]

If an individual is infected on two separate occasions by the same organism (within the episode of infection) they will be represented by one distinct record. It is still unclear to what extent second infections occur in COVID-19. The exception to this is where the first result is negative and is then followed by a positive result on a second occasion. In such circumstances, the later positive result will be recorded rather than the earlier negative one. If an individual is infected on two separate occasions by the same organism (outside the episode of infection with recovery implied) they will be represented by two distinct records, regardless of the test result. This is a standard approach which is taken across a range of infectious diseases.

All laboratories report a standardised data set which includes individual demographics, test result and source (location) at the time the specimen was taken. Data are collated to produce information on the number and trend of individuals tested at HSC Trust laboratories and the number and trend of confirmed cases in NI.

### National Testing Programme

The National Testing Programme in NI consists of drive through (regional test sites), mobile test unit sites, home testing and satellite testing of nursing homes.

Everyone in NI with symptoms of COVID-19 is eligible for testing. Close contacts of COVID-19 positive individuals will also be contacted to book a test.

Testing is prioritised through the website gov.uk for essential workers who are self-isolating because they are symptomatic, or have household members who are symptomatic, to help enable essential workers to return to work as soon as safe.

Testing is available for the general public through the website nhs.uk.

The StopCOVID NI contact tracing app is now [available](#) from the Google or Apple App store.

Testing for non-HSC essential workers and the general public is currently conducted in drive-through sites operating in Belfast,

Enniskillen, Craigavon, Derry/Londonderry and Antrim. In addition there are also mobile testing units currently operating within NI, and walk through test sites operating in Omagh, Newry, Lisburn, Ballymena and on Ulster University and Queen's University campuses.

Home testing can be requested by any individual meeting the criteria with a test kit(s) being mailed to the individual and household contacts.

Tests are processed in laboratories outside the normal health and social care network and data fed back to the Public Health Agency via the Business Services Organisation.

The data has been included in the case epidemiology and virology testing surveillance sections. These data should be interpreted with caution when interpreted alongside the HSC laboratory data, because they include testing undertaken as part of the outbreak response i.e. possibly asymptomatic people with a certain age, gender or area profile. Testing numbers may be skewed to different local government districts depending on whether an outbreak was detected and managed.

For more information, see [here](#).

### Care home outbreak surveillance

Care home is a term that includes all nursing homes and residential homes in Northern Ireland that are registered with the Regulation and Quality Improvement Agency (RQIA) and can either be HSC Trust or independently owned. There are 472 active care homes in NI.

All care homes have a requirement to notify the PHA Health Protection duty room of suspected outbreaks of any infectious disease. A suspected outbreak of COVID-19 occurs when two or more residents and/or staff meet the case definitions for suspected COVID-19, confirmed COVID-19, influenza-like illness or worsening shortness of breath.

The PHA Health Protection Directorate care home outbreak surveillance system collects and collates data on all initial notifications of suspected COVID-19 outbreaks from the duty room clinical records.

The care home COVID-19 outbreak surveillance system is updated every day to reflect public health management. If the risk assessment subsequently excludes an outbreak of the initial notification then the surveillance data will be updated.

Currently, care homes with multiple facilities, i.e. nursing and residential, but the same name may be reported as one outbreak, rather than two (if both units are affected) which may underestimate the number of care homes affected.

## Primary care surveillance

### Sentinel testing

The GP sentinel testing surveillance system builds on the existing flu sentinel testing system where 36 general practices ('spotter' practices), representing approximately 11% of practices across Northern Ireland, are commissioned to carry out flu testing in suspected influenza-like illness.

Individuals registered at a spotter practice with symptoms of suspected COVID-19 and who are well enough to self-care in their own home are referred to a Trust testing facility for testing. The service commenced in 13 spotter practices in Belfast and South Eastern HSC Trust locality at the end of April and is currently being rolled out to the other 23 practices in Northern, Southern and Western HSC Trust localities.

Laboratory reports from spotter practices are identified from the laboratory (virology) surveillance and are collated to produce information on the number of individuals tested and the number of confirmed cases.

### COVID centre testing

A COVID centre is a separate facility created as an extension of primary care to help direct suspected COVID positive patients for assessment.

This keeps practices free to deal with any other medical problems. Triage will still occur at the practice, most likely via phone followed by referral to the centre if required.

There are three categories of patient that might be assessed at a COVID centre:

1. patients symptomatic for COVID, or already test positive who are clinically worsening: there will also be direct pathways for investigation and/or admission from the centre
2. patients where there is diagnostic uncertainty: symptoms similar to COVID but could be another clinical problem ranging from tonsillitis to meningitis requiring an assessment to exclude or confirm
3. patients being discharged from hospital: this group will grow with time but on many occasions will still have a need for clinical assessment and follow up.

Centres are staffed by GPs, helped by other members of staff, including nurses, health care workers etc.

Centres run from 8am to 10pm and see patients after triage and referral (by CCG) from the practice.

Patients can either be seen in their car outside the centre if a straightforward examination is needed, or brought into the centre for assessment. Patients are told to wait in their car until phoned to come in to prevent any crowding or grouping of patients.

Centres are hosted by the trusts and operate in each trust area.

### **Critical care surveillance**

Until 28 September 2020, the PHA Health Protection COVID-19 critical care online reporting system captured the incidence of COVID-19 infections in critical care and aims to improve the understanding of severe disease.

This system should complement critical care data collected by the Health and Social Care Board for service planning purposes and the publicly available reports on COVID-19 in critical care NI by the Intensive Care National Audit and Research Centre (iCNARC) ([here](#)).

Since 28 September 2020, data collection for critical care surveillance has been streamlined to coincide with the well-established surveillance of influenza patients in critical care in conjunction with the Critical Care Network Northern Ireland (CaNNI).



Data is collected on all individuals admitted to an Intensive Care Unit (ICU) or High Dependency Unit (HDU) with a positive COVID-19 result, from either before or during the ICU/HDU admission.

### School Surveillance

Information on school COVID-19 incidents is based on situations reported to PHA COVID-19 School Team. These include:

- **Single confirmed case** of COVID-19 in a student or member of staff in the school setting. The incident is closed after 14 days if there have been no further cases.
- **Cluster of two or more confirmed cases** of COVID-19 in a student or member of staff in the school setting within a 14 day period. The incident is closed after 14 days if there have been no further cases from the last case

PHA COVID-19 School Team carries out contact tracing of cases that attend a school in collaboration with PHA Test and Trace Programme. All clusters are also investigated by the School Team in liaison with local partners.

Data are collected on the number of COVID-19 school incidents reported to the PHA COVID-19 School Team since schools reopened on 24 August 2020.

### Mortality surveillance

#### Medical Certificate of Cause of Death for confirmed/suspected COVID-19

The traditional method for examining the number of deaths, and the range of causes of death, takes information from death certificates that are reported to the General Registrar's Office (GRO). The death certificate contains two parts. Part 1 describes the immediate causes of death and Part 2 provides information on related conditions that may also have contributed to death. The numbers of deaths from COVID-19 are based on COVID-19 being recorded on any part of the death certificate (i.e. Part 1 or Part 2).

These include all deaths in which a doctor feels that COVID-19 was either a direct or indirect cause of death. It includes confirmed cases

(deaths with a positive laboratory result) and probable or suspected cases, where a doctor assesses that COVID-19 was a cause of death but there is either no lab test or the test was negative. It captures deaths in all settings, such as hospitals, care homes, hospices and the community. It takes up to five days for most deaths to be certified by a doctor, registered and the data processed, meaning these deaths will be reported on about a week after they occurred.

Inclusion of references to COVID-19 in Part 2 of the death certificate may slightly over estimate the number of individuals where COVID-19 is a significant contributor to death.

### All-cause excess deaths

The PHA Health Protection Directorate reports the weekly number of excess deaths from any cause for NI using the Mortality Monitoring in Europe (EuroMOMO) model. EuroMOMO provides a coordinated, timely and standardised approach to monitoring and analysing mortality data across the UK and Europe, to ensure that signals are comparable between countries. Further information is available [here](#).

Based on mortality data supplied by NISRA, EuroMOMO produces the number of expected and observed deaths every week, corrected for reporting delay and standardised for the population by age group and region. Excess mortality is reported if the number of observed deaths exceeds the number of expected deaths, and is defined as a statistically significant increase in the number of deaths reported over the expected number for a given point in time.

## Case definitions

Case definitions are determined by Public Health England, on the advice of the New and Emerging Respiratory Virus Threats Advisory Group (NERVTAG). As the pandemic evolves and more evidence emerges the definitions will change to ensure individuals are appropriately identified.

### Possible case of COVID-19 (as of 28 September 2020)

As of 02 October, case definitions for inpatient and community settings were consolidated into one list. Unusual presentations are also highlighted.

Individuals with

- new continuous cough **OR**
- high temperature **OR**
- a loss of, or change in, normal sense of smell (anosmia) or taste (ageusia)

Individuals with any of the above symptoms but who are well enough to remain in the community should follow the [stay at home guidance](#) and [get tested](#).

Clinicians should be alert to the possibility of atypical presentations in patients who are immunocompromised.

Alternative clinical diagnoses and epidemiological risk factors should be considered.

A wide variety of clinical symptoms have been associated with COVID-19.

Patients with acute respiratory infection, influenza-like illness, clinical or radiological evidence of pneumonia, or acute worsening of underlying respiratory illness, or fever without another cause should have a COVID-19 test, whether presenting in primary or secondary care.

In addition, the following situation should prompt clinicians to consider COVID-19 testing:

- Onset of delirium (acute confusion) in older people, or in those with dementia or cognitive impairment. New infections in people with dementia may manifest as delirium.

### Confirmed case of COVID-19

An individual with clinical symptoms and a positive SARS-CoV2 specimen result.

### Critical care COVID-19 case

A case that has either been admitted to an ICU/HDU in NI with a pre-existing positive result for SARS-CoV2, or received a positive result for SARS-CoV2 post-admission to ICU/HDU.

### Influenza-like illness (ILI)

Acute respiratory disease with sudden onset of symptoms and:

- at least one systemic symptom (fever  $\geq 37.8^{\circ}\text{C}$ , myalgia, malaise, headache) AND
- at least one respiratory symptom: cough (with or without sputum), shortness of breath (and/or wheezing), sore throat, nasal discharge, sneezing or congestion

### Further Information

This bulletin is produced by the Health Protection Surveillance Team on behalf of the Director of Public Health. Correspondence should be directed to: Dr Stephen Bergin, Acting Director of Public Health, Public Health Agency, 12 – 22 Linenhall Street, Belfast, BT2 8BS. Email: [Stephen.Bergin@hscni.net](mailto:Stephen.Bergin@hscni.net) .

© Public Health Agency: 16 June 2021.