

NORTHERN IRELAND CONSTRUCTION OUTPUT STATISTICS

REVISION NOTICE

CHANGES TO NEW WORK AND R&M SERIES

In the Q3 2016 NI Construction Bulletin users were advised of an historical inaccuracy in the New Work and Repair & Maintenance series. The purpose of this Notice is to explain the historical inaccuracy and to revise the series to more accurately reflect these sub-categories of construction output. **Please note that this historical inaccuracy does not affect the estimates of overall construction output previously published up to and including Q3 2016.**

Historically, the QCE questionnaire collected details of all construction projects with a value of £100,000 or more. Up to and including Q3 2016, all of these projects were classed and reported as New Work. This did not take into account that some of these projects should have been classed as Repair & Maintenance. From Q1 2013, the data collection questionnaire and data processing systems were changed to make it possible to re-classify projects with an individual value of £100,000 or more into New Work or Repair and Maintenance.

Initially, it was the plan of NISRA to collect data under the new format for a sufficient number of quarters in order to facilitate the modelling of the New Work and R&M series prior to Q1 2013 and to release figures for the whole revised series at the same time. Following recent preliminary analysis of the available data, we have determined that the shifting quarterly patterns in the splits between New Work and R&M Output levels make it difficult to reliably estimate these back series before Q1 2013.

Consequently, we have decided to only revise these series from Q1 2013 onwards. As a result of the above, there is now a discontinuity in New Work and R&M series prior to Q1 2013. Excel tables containing data before and after Q1 2013 for New Work and R&M will continue to be made available to users.

The main consequence of the re-classification of the construction projects is that the overall value of New Work is lower than before and R&M is higher. However, trends in growth rates remain broadly similar.

The revised estimates of New Work and R&M Output from Q1 2013 are contained in Tables 1.2 and 1.3 of this Notice. We have maintained the table numbering for comparison with the affected tables in the NI Construction Bulletin.

As can be seen in Figure 2, the trend in growth rates between the previously published and the revised figures for New Work is quite similar.

The revisions to the R&M series show more fluctuation in growth rates than previously published figures (Figure 3). However, some of this fluctuation is due to the revised R&M series being considered to be affected by seasonality more so than before resulting in new seasonal adjusters being applied to this series.

Tables 1.8(a), 1.8(b), 1.9 and 1.10 of the NI Construction Bulletin will also be affected by the re-classification of the construction projects. In the Q3 2016 NI Construction Bulletin, users were advised that there would be some change to the formatting of these tables as a result of changes in the QCE questionnaire. The revised tables with the new format can also be found below.

Please note that the Q4 2016 NI Construction Bulletin due to be published on 13 April 2017 will contain these new updated tables.

Further Information

Issued by: Nicola Shiels
Telephone: (028) 90 255064
E-mail: Nicola.Shiels@finance-ni.gov.uk

Central Survey Unit
Northern Ireland Statistics & Research Agency
Colby House
Stranmillis Court
Belfast BT9 5RR

Construction Output website available at:
<https://www.nisra.gov.uk/statistics/economic-output-statistics/construction-output-statistics>

Previously published bulletin and data tables available at:
<https://www.nisra.gov.uk/publications/construction-output-statistics-q3-2016>

Table 1.2 Revised Chained volume measure of New Work¹ Output in Northern Ireland²: (2013) prices, non-seasonally adjusted index numbers

| Year/Quarter | | Published 2016 Q3 Data | | Revised Data | |
|--------------|-----------|--------------------------------------|----------------------------|--------------------------------------|----------------------------|
| | | Chained Volume Measure (2013) Prices | Quarter on Quarter Growths | Chained Volume Measure (2013) Prices | Quarter on Quarter Growths |
| 2013 | Jan – Mar | 105.2 | 1.9% | 106.5 | -12.9% |
| | Apr – Jun | 99.4 | -5.5% | 98.0 | -8.0% |
| | Jul – Sep | 101.9 | 2.5% | 100.9 | 3.0% |
| | Oct – Dec | 93.5 | -8.3% | 94.6 | -6.3% |
| 2014 | Jan – Mar | 95.8 | 2.5% | 95.6 | 1.1% |
| | Apr – Jun | 98.3 | 2.6% | 99.7 | 4.3% |
| | Jul – Sep | 101.0 | 2.7% | 103.6 | 3.9% |
| | Oct – Dec | 107.6 | 6.6% | 110.1 | 6.3% |
| 2015 | Jan – Mar | 118.8 | 10.4% | 122.5 | 11.2% |
| | Apr – Jun | 122.3 | 3.0% | 127.0 | 3.7% |
| | Jul – Sep | 117.1 | -4.3% | 119.1 | -6.2% |
| | Oct – Dec | 122.4 | 4.6% | 128.5 | 7.9% |
| 2016 | Jan – Mar | 120.9 | -1.2% | 119.4 | -7.1% |
| | Apr – Jun | 130.8 | 8.1% | 131.2 | 9.9% |
| | Jul – Sep | 123.4 | -5.6% | 127.6 | -2.8% |

Figure 2 - Volume of New Work Output in NI

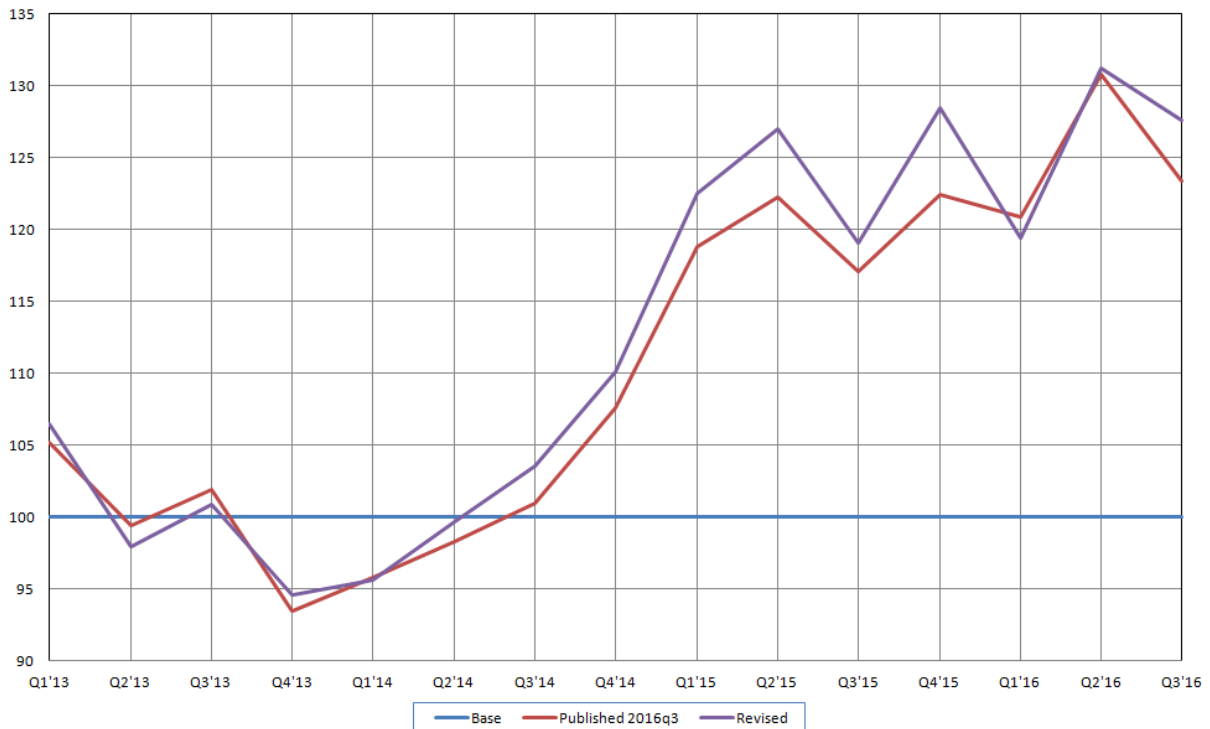


Table 1.3 Chained volume measure of Repair and Maintenance¹ Output in Northern Ireland²: (2013) prices, seasonally adjusted index numbers

| Year/Quarter | | Published 2016 Q3 Data | | Revised Data | |
|--------------|-----------|--|----------------------------|--|----------------------------|
| | | Chained Volume Measure (2013) Prices Seasonally Adjusted | Quarter on Quarter Growths | Chained Volume Measure (2013) Prices Seasonally Adjusted | Quarter on Quarter Growths |
| 2013 | Jan – Mar | 105.6 | -0.6% | 98.8 | 14.4% |
| | Apr – Jun | 98.0 | -7.2% | 97.8 | -1.0% |
| | Jul – Sep | 97.7 | -0.3% | 103.2 | 5.6% |
| | Oct – Dec | 98.7 | 1.0% | 100.2 | -2.9% |
| 2014 | Jan – Mar | 106.8 | 8.2% | 98.6 | -1.6% |
| | Apr – Jun | 101.0 | -5.4% | 98.6 | 0.0% |
| | Jul – Sep | 100.3 | -0.7% | 99.3 | 0.7% |
| | Oct – Dec | 101.7 | 1.4% | 104.5 | 5.2% |
| 2015 | Jan – Mar | 106.7 | 5.0% | 99.1 | -5.1% |
| | Apr – Jun | 101.3 | -5.1% | 100.6 | 1.5% |
| | Jul – Sep | 93.0 | -8.2% | 99.9 | -0.6% |
| | Oct – Dec | 92.3 | -0.7% | 97.5 | -2.4% |
| 2016 | Jan – Mar | 103.7 | 12.3% | 107.5 | 10.2% |
| | Apr – Jun | 100.9 | -2.7% | 110.4 | 2.7% |
| | Jul – Sep | 110.2 | 9.2% | 110.5 | 0.1% |

Figure 3 - Volume of Repair and Maintenance Output in NI

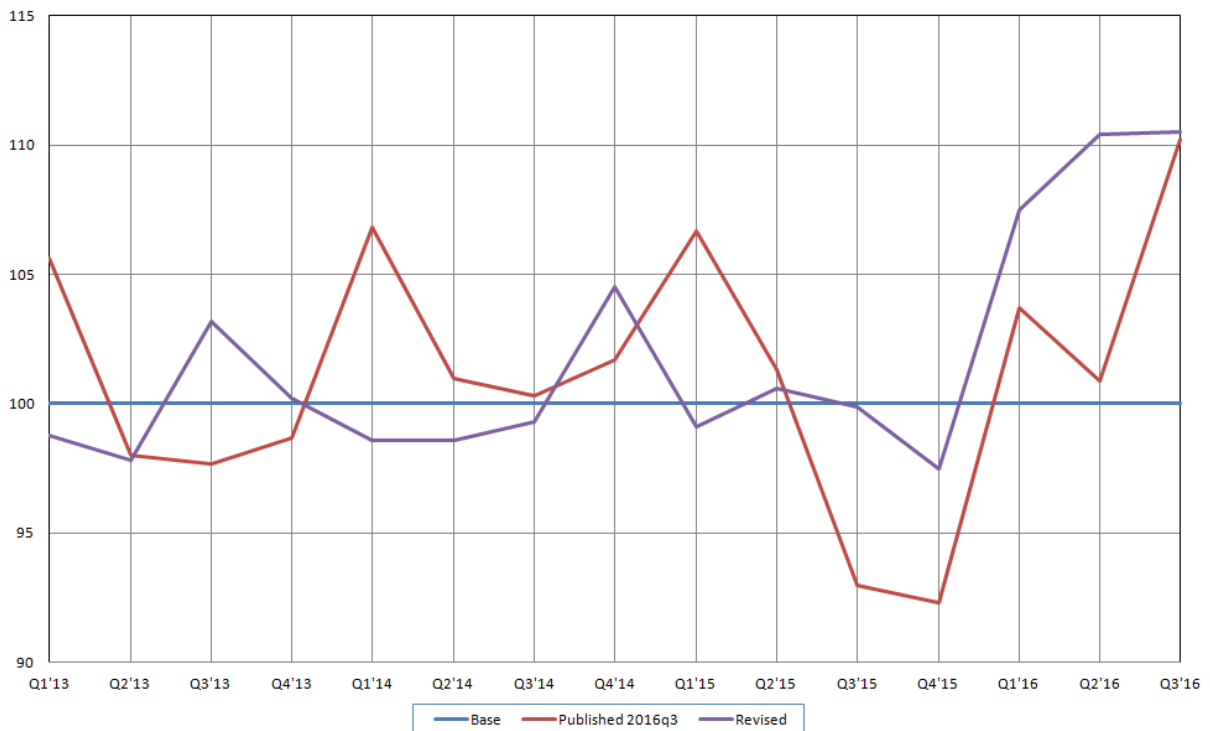


Table 1.8 (a) Volume of Output¹ in Northern Ireland by Construction Sector

Current Prices (£ million)

| YEAR/ QUARTER | New | | | | | | | All New Work | Repair and Maintenance | | | | | | All repair & maintenance | All Work |
|------------------|-----------|---------|----------------|---------|------------|---------|---------|-----------------|------------------------|--------|------------|--------|---------|------|-----------------------------|----------|
| | Housing | | Infrastructure | | Other Work | | Housing | | Infrastructure | | Other Work | | | | | |
| | Public | Private | Public | Private | Public | Private | Public | | Private | Public | Private | Public | Private | | | |
| 2013 | Jan - Mar | 36.6 | 86.9 | 60.7 | 44.1 | 57.4 | 45.1 | 330.8 | 31.9 | 40.1 | 52.6 | 8.6 | 55.1 | 36.4 | 224.7 | 555.5 |
| | Apr - Jun | 33.2 | 90.7 | 48.7 | 34.5 | 55.4 | 44.3 | 306.8 | 28.1 | 39.4 | 48.2 | 16.2 | 45.3 | 44.2 | 221.4 | 528.2 |
| | Jul - Sep | 34.2 | 90.0 | 50.2 | 40.9 | 51.1 | 52.8 | 319.3 | 27.1 | 38.1 | 46.8 | 10.2 | 51.3 | 48.8 | 222.3 | 541.6 |
| | Oct - Dec | 26.7 | 89.2 | 46.8 | 52.4 | 41.3 | 47.4 | 303.8 | 29.2 | 39.4 | 43.5 | 10.5 | 46.6 | 43.8 | 213.1 | 516.8 |
| 2014 | Jan - Mar | 25.8 | 87.3 | 51.5 | 38.4 | 58.3 | 50.8 | 312.1 | 31.4 | 40.3 | 48.9 | 12.2 | 54.8 | 45.9 | 233.5 | 545.6 |
| | Apr - Jun | 26.4 | 90.7 | 45.8 | 39.5 | 64.0 | 57.8 | 324.1 | 31.8 | 41.7 | 45.5 | 10.9 | 44.2 | 46.3 | 220.4 | 544.5 |
| | Jul - Sep | 20.2 | 92.4 | 51.6 | 36.3 | 78.3 | 60.7 | 339.6 | 35.6 | 39.0 | 38.1 | 10.6 | 45.7 | 48.2 | 217.2 | 556.8 |
| | Oct - Dec | 19.4 | 104.5 | 52.0 | 36.5 | 84.9 | 64.2 | 361.5 | 40.1 | 49.1 | 39.3 | 13.1 | 40.1 | 42.7 | 224.4 | 585.9 |
| 2015 | Jan - Mar | 19.6 | 100.8 | 67.1 | 38.7 | 112.5 | 67.1 | 405.8 | 38.7 | 41.7 | 42.8 | 12.6 | 50.8 | 50.3 | 237.0 | 642.8 |
| | Apr - Jun | 31.5 | 111.8 | 51.4 | 39.3 | 123.2 | 63.7 | 420.9 | 40.5 | 41.8 | 36.3 | 18.7 | 42.6 | 47.6 | 227.6 | 648.5 |
| | Jul - Sep | 30.0 | 113.4 | 39.9 | 44.8 | 114.1 | 59.2 | 401.4 | 35.9 | 41.3 | 37.9 | 17.7 | 40.2 | 48.4 | 221.4 | 622.8 |
| | Oct - Dec | 31.9 | 117.4 | 37.0 | 74.4 | 112.1 | 60.7 | 433.5 | 36.3 | 47.4 | 30.3 | 11.2 | 36.0 | 50.0 | 211.2 | 644.7 |
| 2016 | Jan - Mar | 28.9 | 106.3 | 31.8 | 70.2 | 108.3 | 61.2 | 406.8 | 51.4 | 38.9 | 47.3 | 12.3 | 45.0 | 62.6 | 257.7 | 664.4 |
| | Apr - Jun | 29.9 | 122.4 | 28.4 | 88.6 | 108.0 | 71.6 | 448.9 | 47.6 | 37.1 | 44.6 | 18.3 | 35.1 | 68.4 | 251.0 | 699.8 |
| | Jul - Sep | 28.3 | 117.1 | 28.4 | 90.8 | 99.9 | 72.5 | 437.1 | 43.9 | 43.2 | 42.7 | 14.1 | 42.0 | 61.7 | 247.7 | 684.7 |

¹Includes output by contractors and public sector direct labour organisations

Table 1.8 (b) Volume of Output¹ in Northern Ireland by Construction SectorChained Volume Measure (2013) Prices and Seasonally Adjusted³ (£ million)

| YEAR/ QUARTER | New | | | | | | All New Work ² | Repair and Maintenance | | | | | | All Repair & Maintenance ² | All Work ² |
|----------------|-------------|---------|----------------|---------|------------|---------|---------------------------|------------------------|---------|----------------|---------|------------|---------|---------------------------------------|-----------------------|
| | New housing | | Infrastructure | | Other Work | | | New housing | | Infrastructure | | Other Work | | | |
| | Public | Private | Public | Private | Public | Private | | Public | Private | Public | Private | Public | Private | | |
| 2013 Jan - Mar | 36.9 | 90.5 | 61.7 | 44.8 | 56.6 | 49.0 | 335.8 | 32.4 | 44.1 | 48.6 | 0.0 | 49.4 | 37.0 | 217.7 | 567.1 |
| Apr - Jun | 33.2 | 89.7 | 48.9 | 34.8 | 52.5 | 46.2 | 308.8 | 27.9 | 41.0 | 48.6 | 0.0 | 46.0 | 44.1 | 215.4 | 524.6 |
| Jul - Sep | 34.1 | 90.4 | 49.9 | 40.7 | 53.0 | 49.3 | 318.0 | 27.1 | 37.9 | 46.9 | 0.0 | 51.7 | 48.5 | 227.4 | 540.6 |
| Oct - Dec | 26.4 | 86.2 | 45.9 | 51.6 | 42.4 | 45.4 | 298.1 | 29.1 | 34.3 | 47.0 | 0.0 | 51.3 | 43.6 | 220.9 | 509.8 |
| 2014 Jan - Mar | 25.1 | 85.9 | 49.6 | 37.0 | 51.8 | 52.2 | 301.3 | 31.0 | 42.5 | 43.9 | 12.1 | 47.8 | 45.6 | 217.3 | 532.1 |
| Apr - Jun | 25.9 | 86.0 | 44.2 | 38.1 | 63.1 | 57.0 | 314.2 | 31.3 | 42.2 | 45.6 | 10.8 | 44.9 | 46.0 | 217.3 | 531.8 |
| Jul - Sep | 19.7 | 89.4 | 49.3 | 34.8 | 78.4 | 55.5 | 326.6 | 35.0 | 38.0 | 38.2 | 10.5 | 45.7 | 47.7 | 218.9 | 540.7 |
| Oct - Dec | 18.9 | 98.9 | 49.5 | 34.8 | 85.9 | 60.7 | 347.1 | 39.5 | 43.4 | 42.3 | 12.9 | 43.8 | 42.3 | 230.2 | 568.1 |
| 2015 Jan - Mar | 18.9 | 98.1 | 63.5 | 36.7 | 104.2 | 67.2 | 386.1 | 37.9 | 43.1 | 38.1 | 12.4 | 43.9 | 49.4 | 218.5 | 618.2 |
| Apr - Jun | 30.2 | 103.4 | 48.8 | 37.3 | 113.6 | 60.4 | 400.3 | 39.6 | 42.1 | 35.8 | 18.3 | 43.0 | 46.5 | 221.7 | 622.2 |
| Jul - Sep | 28.4 | 106.5 | 37.1 | 41.8 | 109.8 | 53.6 | 375.3 | 35.0 | 40.0 | 37.5 | 17.3 | 39.7 | 47.3 | 220.2 | 591.1 |
| Oct - Dec | 30.2 | 107.7 | 34.4 | 69.3 | 110.2 | 56.1 | 404.9 | 35.4 | 41.2 | 32.2 | 10.9 | 38.6 | 48.8 | 214.9 | 610.4 |
| 2016 Jan - Mar | 27.0 | 101.1 | 29.4 | 65.1 | 98.9 | 59.0 | 376.2 | 50.1 | 40.4 | 41.8 | 12.0 | 38.7 | 61.1 | 236.9 | 626.9 |
| Apr - Jun | 27.7 | 109.2 | 26.2 | 81.8 | 94.9 | 65.5 | 413.6 | 46.2 | 36.9 | 43.6 | 17.8 | 35.4 | 66.5 | 243.3 | 657.1 |
| Jul - Sep | 26.1 | 106.8 | 26.7 | 85.4 | 93.8 | 64.6 | 402.1 | 42.4 | 41.8 | 42.0 | 13.7 | 41.0 | 59.8 | 243.6 | 641.4 |

¹ Includes output by contractors and public sector direct labour departments² Figures will not tally with component series (see background notes paragraph 8)³ Some of the series in this table are no longer considered to be candidates for seasonal adjustment. For more information please see paragraph 2 in the Background Notes. All component series which are seasonally adjusted have been shaded.

Table 1.9 Volume of Output¹ in Northern Ireland (Private Contractors only) by Stratum² of Firm

Current Prices (£million)

| 3rd Quarter 2016 | | | | | | | | | | | | | | | | |
|------------------|-------------------------|-------------|--------------|----------------|-------------|-------------|-------------|--------------|------------------------|-------------|----------------|-------------|-------------|-------------|--------------------------|--------------|
| Stratum of Firm | Annual Turnover (£'000) | New | | | | | | All New Work | Repair and Maintenance | | | | | | All Repair & maintenance | All Work |
| | | New housing | | Infrastructure | | Other Work | | | New housing | | Infrastructure | | Other Work | | | |
| | | Public | Private | Public | Private | Public | Private | | Public | Private | Public | Private | Public | Private | | |
| 1 | 0-124 | 0.9 | 2.8 | 0.0 | 0.0 | 0.0 | 1.6 | 5.3 | 1.7 | 9.4 | 1.5 | 2.3 | 0.0 | 4.0 | 18.8 | 24.2 |
| 2 | 125-549 | 0.0 | 26.0 | 0.0 | 0.0 | 0.0 | 4.4 | 30.4 | 5.9 | 17.7 | 0.0 | 0.9 | 4.3 | 15.3 | 44.1 | 74.5 |
| 3 | 550-2,099 | 0.6 | 26.1 | 1.7 | 0.7 | 1.7 | 13.1 | 43.9 | 6.3 | 6.4 | 3.5 | 3.1 | 6.8 | 15.5 | 41.6 | 85.5 |
| 4 | 2,100-5,249 | 4.0 | 35.2 | 1.1 | 2.6 | 4.8 | 12.5 | 60.3 | 7.3 | 4.3 | 1.5 | 0.7 | 1.8 | 7.8 | 23.4 | 83.7 |
| 5 | 5,250-10,499 | 11.7 | 10.5 | 11.4 | 9.8 | 13.2 | 12.6 | 69.2 | 8.8 | 4.3 | 2.3 | 0.6 | 5.6 | 5.6 | 27.2 | 96.4 |
| 6 | 10,500+ | 11.0 | 16.6 | 14.3 | 77.7 | 76.2 | 28.3 | 224.1 | 9.9 | 1.1 | 24.3 | 6.7 | 13.8 | 13.5 | 69.2 | 293.2 |
| Total | | 28.3 | 117.1 | 28.4 | 90.8 | 95.9 | 72.5 | 433.1 | 39.9 | 43.2 | 33.1 | 14.1 | 32.2 | 61.7 | 224.4 | 657.5 |

¹Includes output by Contractors only

²Firms are stratified by turnover

Table 1.10 Volume of New Work Output¹ in Northern Ireland by Type of Work

Current Prices (£ million)

a) New Work for Public Sector

| Year | Housing | Infra - structure | Other Work | All public sector |
|-------------|----------------|--------------------------|-------------------|--------------------------|
| 2013 | 130.6 | 193.4 | 181.0 | 504.9 |
| 2014 | 91.8 | 200.4 | 260.7 | 552.9 |
| 2015 | 113.0 | 195.1 | 439.3 | 747.4 |

b) New Work for Private Sector

| Year | Housing | Infra - structure | Other Work | All private sector |
|-------------|----------------|--------------------------|-------------------|---------------------------|
| 2013 | 356.7 | 171.9 | 189.7 | 718.3 |
| 2014 | 374.8 | 150.7 | 233.6 | 759.1 |
| 2015 | 443.4 | 197.2 | 250.7 | 891.4 |

c) New Work for Public and Private Sector

| Year | Housing | Infra - structure | Other Work | All Public & Private Work |
|-------------|----------------|--------------------------|-------------------|--------------------------------------|
| 2013 | 487.3 | 365.2 | 370.6 | 1223.2 |
| 2014 | 466.6 | 351.1 | 494.2 | 1312.0 |
| 2015 | 556.4 | 392.4 | 690.0 | 1638.8 |

¹ Includes output by contractors only