

Welcome to CSSSC

The Controlled Schools' Support Council (CSSSC) is proud to be the first advocacy body for controlled schools.

The need for CSSSC was affirmed very quickly after we formed on 1 September 2016, and I am delighted that over 90% of controlled schools have opted-in to register with the Council.

As a new organisation, it has been our priority to build relationships with schools, DE (as our core funder) and many other organisations which make a valuable contribution to education.

In our first year we have

- recruited a dedicated and experienced team of staff
- hosted a series of listening events to give school principals and governors the opportunity to discuss their concerns
- published a detailed baseline analysis of the controlled sector
- secured €140,000 for an Erasmus+ project to enhance pupil performance in solving problems within maths
- provided advice and support to schools on a range of issues such as schools' estate planning, funding applications and liaising with other bodies

The next 12 months for Northern Ireland's controlled schools will be increasingly difficult as the education system faces substantial financial restrictions.

CSSSC's vision is to support controlled schools in providing high quality education for children and young people, to enable them to learn, develop and grow together within the values of a non-denominational Christian environment.

By working together, I am confident that we will achieve this vision.



Barry Mulholland, Chief Executive



HOW CAN WE HELP YOU?

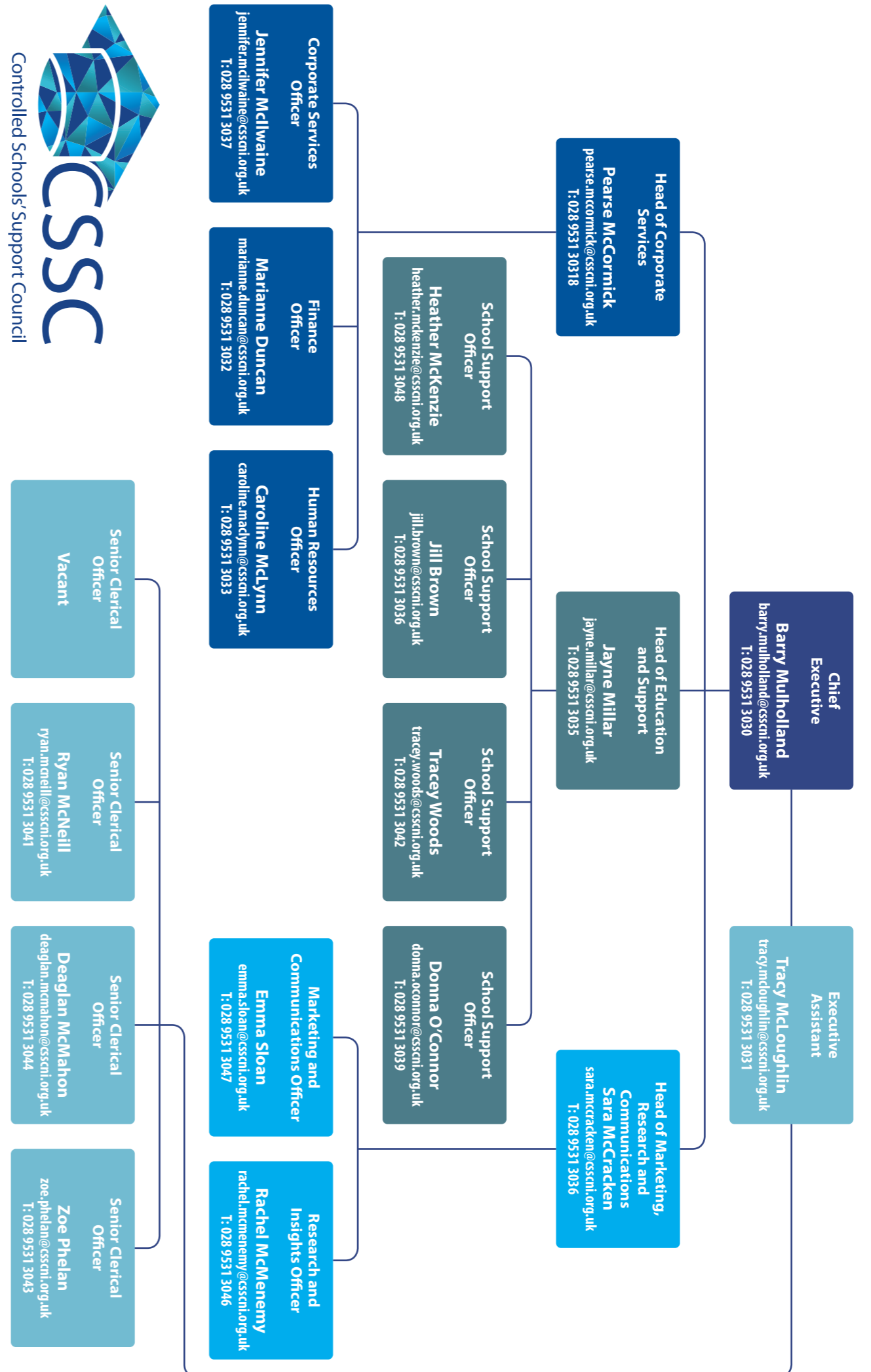
Our team of experienced staff is here to help you. All contact details are on the back of this newsletter; please don't hesitate to contact us about any issue.

You can also visit our interactive map on our website to find your designated school support officer.

Controlled Schools' Support Council
 Second Floor, Main Building
 Stranmillis University College
 Stranmillis Road
 Belfast
 BT9 5DY

Telephone: 028 9531 3030
 Email: info@csscni.org.uk
 Web: csscni.org.uk

Meet the team



Challenging misconceptions

CSSC carried out a baseline assessment of the controlled schools sector using DE's 16/17 data.

The research challenges misconceptions of the sector and demonstrates its complexity and diversity. We have presented our findings to a range of stakeholders. Our report is available to download from our website.

3 facts about controlled education

- 1 It is the largest education sector in Northern Ireland
- 2 It is the only sector with all school types
- 3 95% of special schools are controlled schools

CSSC's work

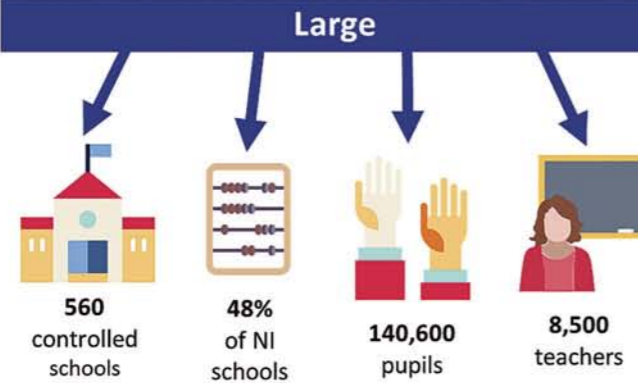
We are working with schools, DE and EA on

- advocacy
- ethos
- raising standards
- governance
- schools' estate

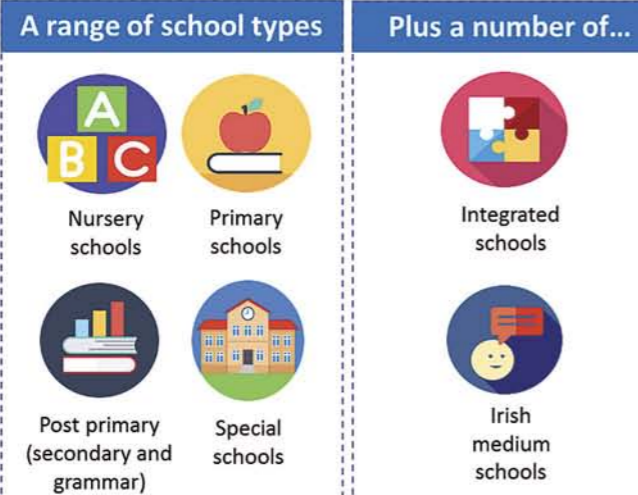
What is the controlled schools' sector?

The controlled sector is the largest education sector in Northern Ireland, yet despite its size and distinctive characteristics there is a general lack of understanding of the sector.

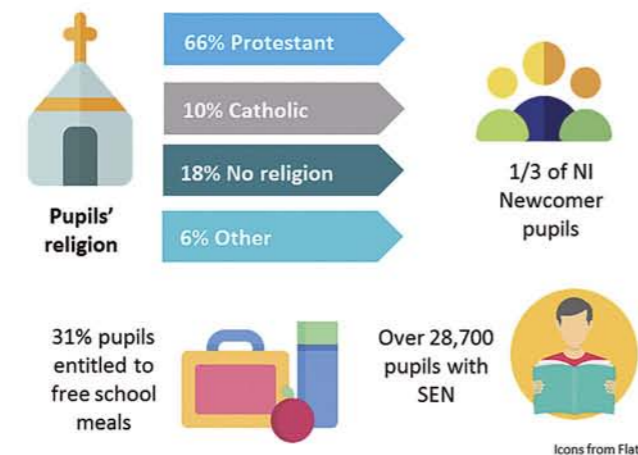
The controlled sector is...



Diverse



Inclusive



Controlled Schools' Support Council

In September 2016 the Controlled Schools' Support Council was set up to represent and support the controlled sector.

www.csscni.org.uk | 028 9531 3046 | info@csscni.org.uk



Barry Mulholland, Mervyn Storey, Raymond McFeeters, Derek Baker, Peter Hamill



Karen Mullan MLA, Barry Mulholland



Ken Twyble, Mark Orr, Reverend Colin McClure, Jayne Millar

First anniversary reception

We were delighted to welcome the Permanent Secretary, politicians and partner organisations to our reception in September. Staff took the opportunity to highlight the successes that CSSC has achieved in its first year.



Professor Sir Desmond Rea, Mark Orr



Duke of Edinburgh representatives with Barry Mulholland and David Knox



Steven Aiken MLA, Barry Mulholland



Ian McConaghy, John Wilkinson



Hugh McCarthy, Ken Twyble, Mervyn Storey MLA



Liam Barr, Jayne Millar



Mark Orr, Derek Baker, Kellie Armstrong MLA, Barry Mulholland and Mervyn Storey MLA