

Statistical Bulletin 2/2018

Annual enrolments at schools and in funded pre-school education in Northern Ireland, 2017/18

Published date: 27 February 2018

Revised: 17 July 2018

Coverage: Northern Ireland

Frequency: Annual

Theme: Children, Education and Skills

Issued by:

Statistics & Research Team
Department of Education
Rathgael House
Balloo Road, Rathgill
BANGOR BT19 7PR

Telephone

Press Office:

028 9127 9207

Statistics & Research Team:

028 9127 9707

Statistician: Gemma Thomson

Email:

statistics@education-ni.gov.uk

Internet

<https://www.education-ni.gov.uk/topics/statistics-and->

The purpose of this statistical release is to present final enrolment figures for schools and for children in funded pre-school education for 2017/18.

Key points:

- There are 173,744 pupils in **primary** schools (years 1-7), and this has risen by over 2,000 pupils this year to the highest total since 1999/00.
- In total 140,545 pupils are enrolled in **post-primary** schools, increasing slightly from 2016/17. There are approximately 28,500 pupils in **sixth forms** in schools, 62% of all 16-17 year olds in Northern Ireland.
- There are 23,500 pupils in **funded pre-school education**, a small drop on last year. This is 91% of three year olds in the population.
- More than 100,000 pupils in Northern Ireland are entitled to **free school meals** and this represents three in ten of all pupils.



Contents

Section	Title	Page
	Introduction	3
1	Funded pre-school education	4
2	Primary school education	6
3	Post-primary school education	8
4	Special education	11
5	Free school meal entitlement	13
6	Changes in enrolment patterns	14
	Notes for readers	16

Introduction

Provisional enrolment data from the 2017/18 annual school census was released in December 2017. The purpose of this statistical release is to present the final enrolment figures, and a more detailed analysis of this information.

The data are taken from the school census exercise, which ran in October 2017. Data collected through the school census exercise are used by the Department of Education (DE) to inform a wide range of policy areas, including finance allocations, school estate development and planning, special education, school improvement, area based planning, extended schools, additional educational needs, early years and integrated and Irish medium education. Other users include the Education Authority, the Education and Training Inspectorate and to inform responses to Assembly questions and requests from academic researchers, journalists, lobby groups and the public.

Statistics relating to school numbers and enrolments can be found on the Statistics and Research section of the DE website¹. Analysis is provided at Northern Ireland and school level.

This is an annual publication. Provisional data relating to the 2018/19 academic year will be released in December 2018, with a 2018/19 update of this publication being released in February/March 2019.

¹ <https://www.education-ni.gov.uk/topics/statistics-and-research/statistics>

Section 1: Funded pre-school education

1.1. Number of institutions

- There are a total of 773 institutions in Northern Ireland providing funded pre-school education (Table 1a). The total number of institutions offering pre-school education has dropped by twenty this year.
 - Half of all funded pre-school providers are funded voluntary and private pre-school centres, that is, playgroups and day nurseries. There are 383 funded centres this year².
 - Compared to last year, there are sixteen fewer funded voluntary and private pre-school centres. There are also nine fewer primary schools that have reception provision compared to last year³. However, there are an additional five primary schools with nursery provision.

1.2. Enrolments

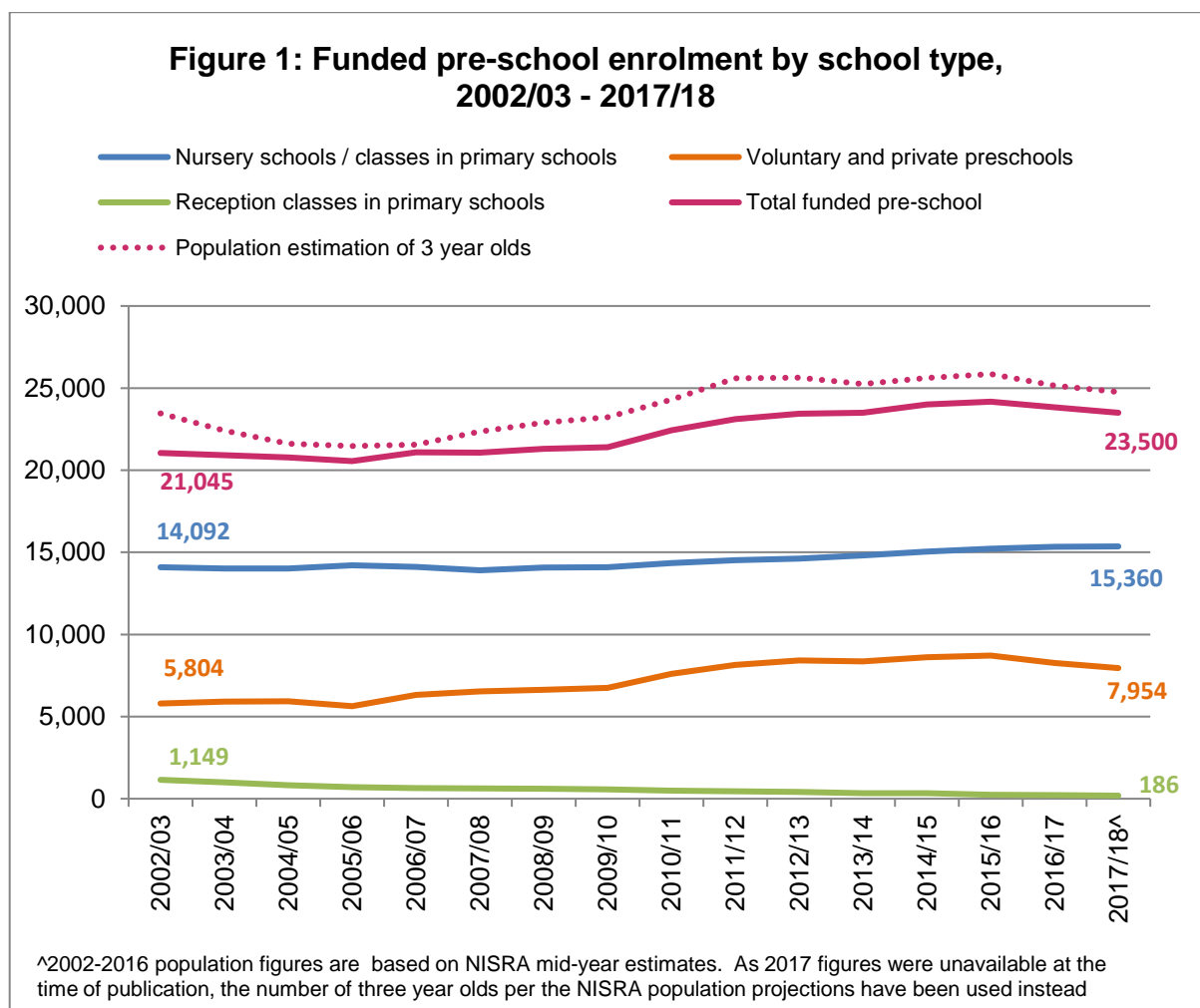
- There are 23,500 pupils in funded pre-school education (Table 2a). This has dropped by over 300 pupils this year compared to last, representing the second year in a row funded pre-school enrolments have decreased.
 - However, this may be explained by there being approximately 400 fewer three year olds in the population this year. In both years, the same proportion (91%) of three year olds in the Northern Ireland population were in funded pre-school education⁴.

² There are a total of 474 voluntary and private pre-school centres in Northern Ireland, but just 383 are fully or partially funded by the Department of Education.

³ Investing in Early Learning, published in 1997, set out the Department's 'intention to replace reception provision with suitable alternative provision so that all children below compulsory school age in school settings will be in planned pre-school provision which meets specified standards' and proposed that 'no new reception provision in primary schools (i.e. provision in schools where a reception class or group does not exist in the 1998/99 school year) will be funded from September 1999'. This policy was implemented with the introduction of the Pre-School Education Expansion Programme in 1998.

⁴ This is calculated by dividing the number of pupils aged 3 in preschool education according to the NI school census (22,633) by the number of children aged 3 in the 2017 population projections (24,761) (the most recent available at time of publication): https://www.nisra.gov.uk/sites/nisra.gov.uk/files/publications/NPP16-ppp-sya_0.xls

- Most of the decrease in funded pre-school enrolments comes from the drop of over 300 pupils enrolled in voluntary and private pre-schools compared to last year. (Figure 1).



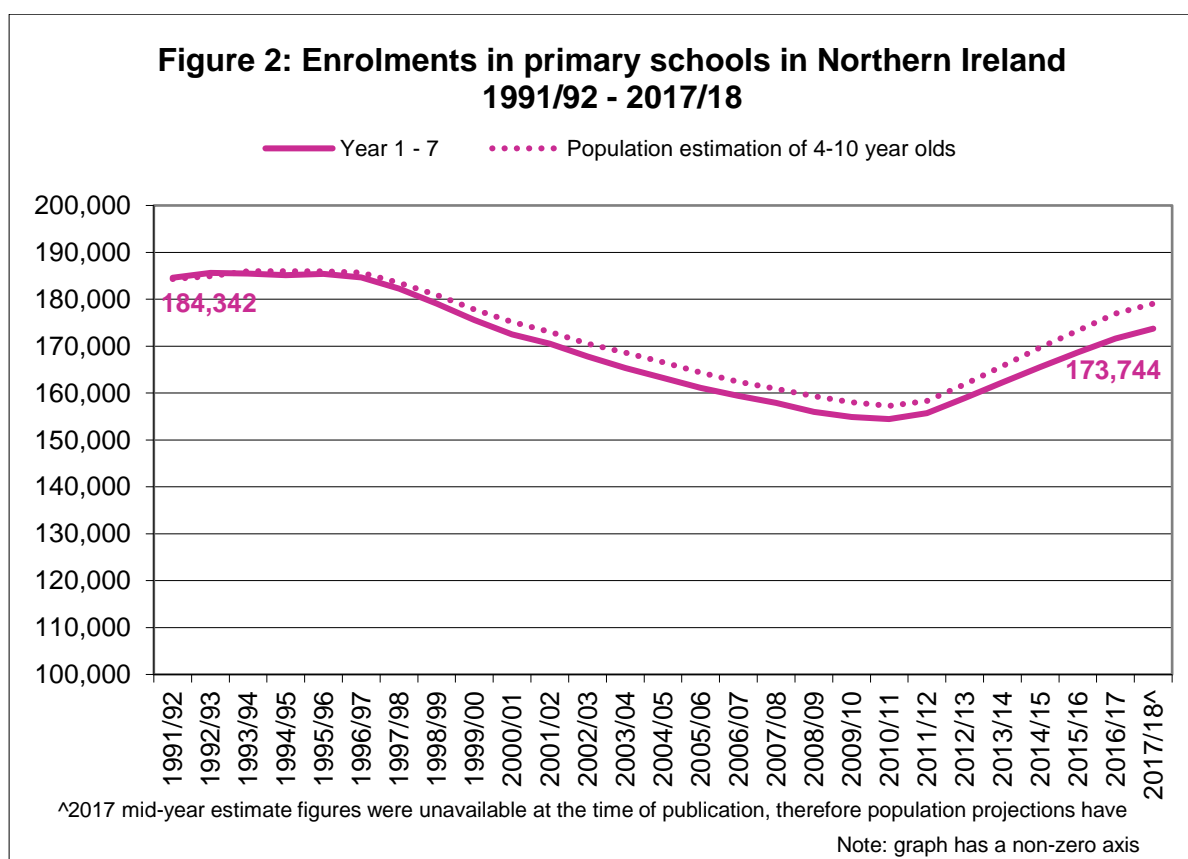
Section 2: Primary school education

2.1. Number of schools

- There are 817 primary schools⁵ (including preparatory departments) in Northern Ireland. This has dropped by 22 schools in the last five years (table 1b).

2.2. Enrolments

- Enrolments of pupils in years 1 to 7 have risen for the seventh year in succession. In October 2017 the total number of year 1-7 pupils was 173,744 (Table 2a), its highest level since 1999/00. Enrolments have increased sharply in recent years; by more than 19,000 pupils since 2010/11 and over 2,000 compared to last year (Figure 2). The increase observed is in line with the rise in the number of 4-10 year olds in NISRA's mid-year estimates over the last seven years⁶.



⁵ This includes St Matthew's PS, Garvaghey, which closed on 31st January 2018.

⁶ <https://www.nisra.gov.uk/sites/nisra.gov.uk/files/publications/Nl-sya-6116.xls>
and https://www.nisra.gov.uk/sites/nisra.gov.uk/files/publications/NPP16-ppp-sya_0.xls

- With the increase in enrolments in primary schools and the reduction in the number of schools, the mean number of pupils per school has risen from 179 in 2010/11 to 213 in 2017/18.

2.3. Class size

- The average number of pupils per class in primary schools (year 1 – year 7) remains steady at 25 (Table 4). Average class sizes differ depending on school type, from 20 in preparatory departments, to 27 in grant maintained integrated schools.

Section 3: Post-primary school education

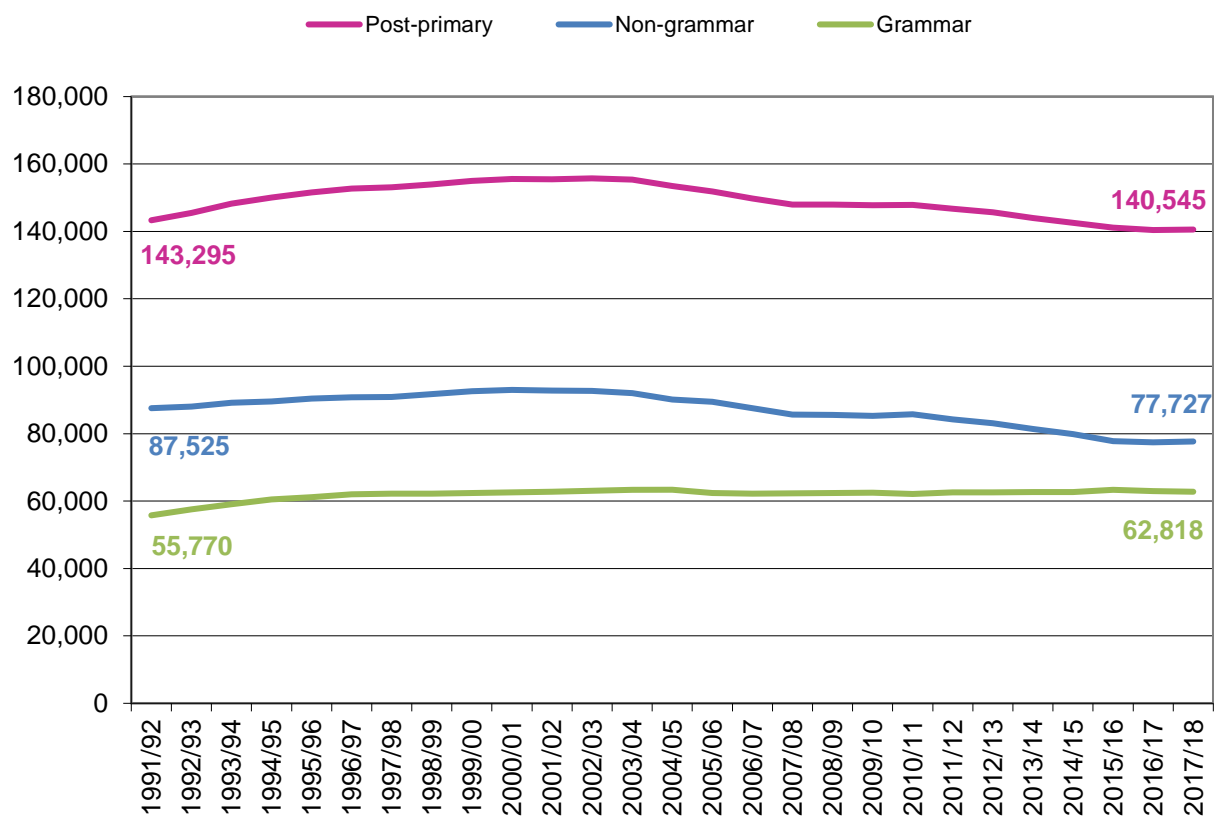
3.1. Number of schools

- The number of post-primary schools in 2017/18 is 199 (Table 1b), a decrease of eleven from five years ago. This is accounted for by a drop in the number of non-grammar schools.
- One-third (66) of post-primary schools are grammar schools and the remaining two-thirds (133) are non-grammars.
- A total of 163 schools have pupils in sixth form.

3.2. Enrolments

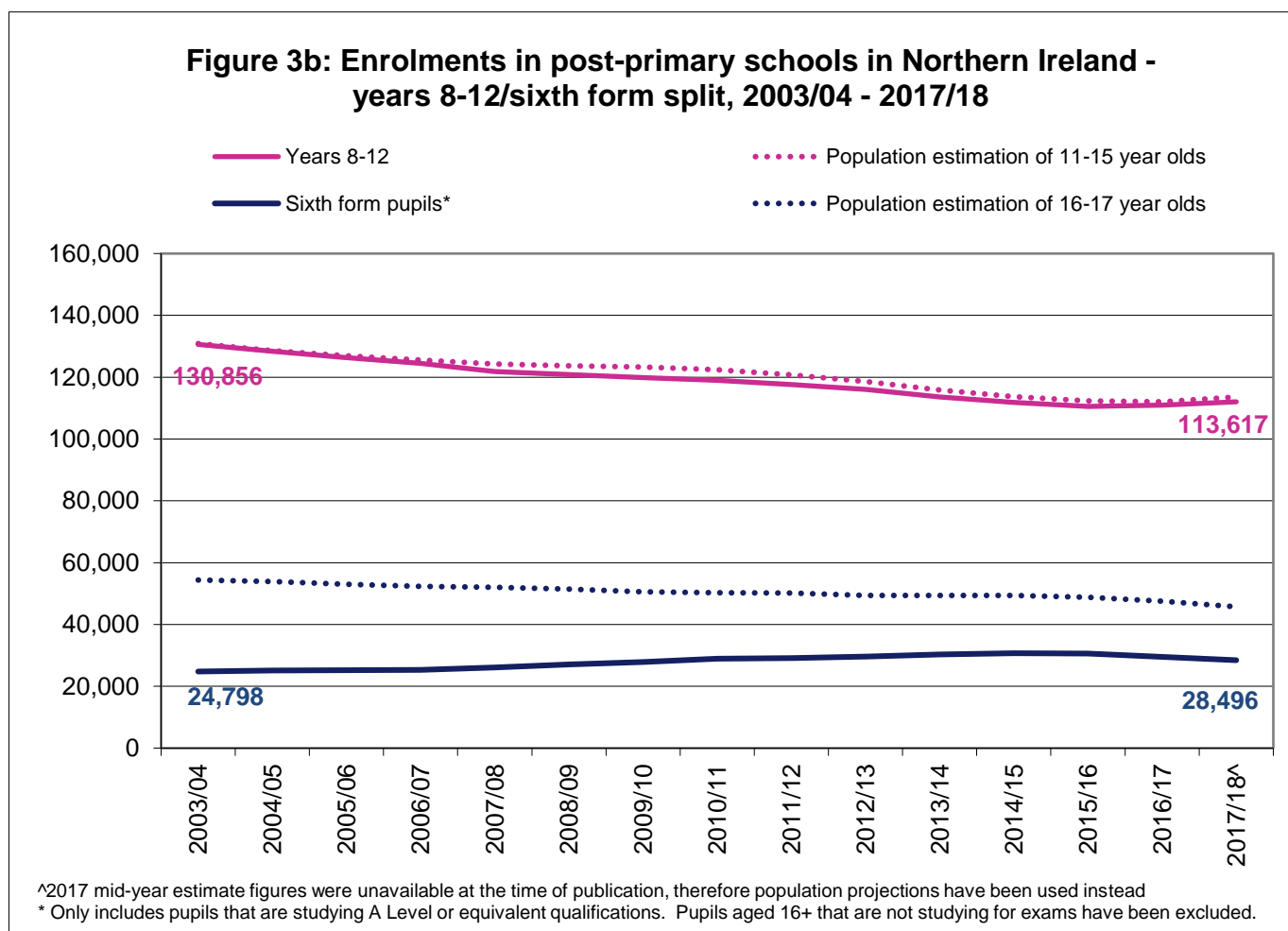
- The number of pupils in post-primary schools is 140,545 (Table 2a). Enrolments have dropped by over 15,000 pupils since its peak in 2002/03. However, it has risen by over 100 pupils in 2017/18 (Figure 3a).
- Small increases in enrolments in both grammar and non-grammar schools are witnessed this year.
- The proportion of post-primary school pupils attending grammar schools remains at its highest level (44.7% in 2017/18 compared to 37.2% in 1986/87).

Figure 3a: Enrolments in post-primary schools in Northern Ireland - grammar/non-grammar split, 1991/92 - 2017/18



3.3. Enrolments by year groups

- There are more than 1,000 additional pupils in years 8-12 compared to last year. This is reflected in an increase in the number of 11-15 year olds in the population.
- There are almost 28,500 pupils studying A Level or equivalent qualifications in schools in Northern Ireland in 2017/18. This has decreased by nearly 1,000 pupils compared to last year. This may be explained by the fact that the number of 16 and 17 year olds in the population has also dropped by over 1,800 compared to last year.



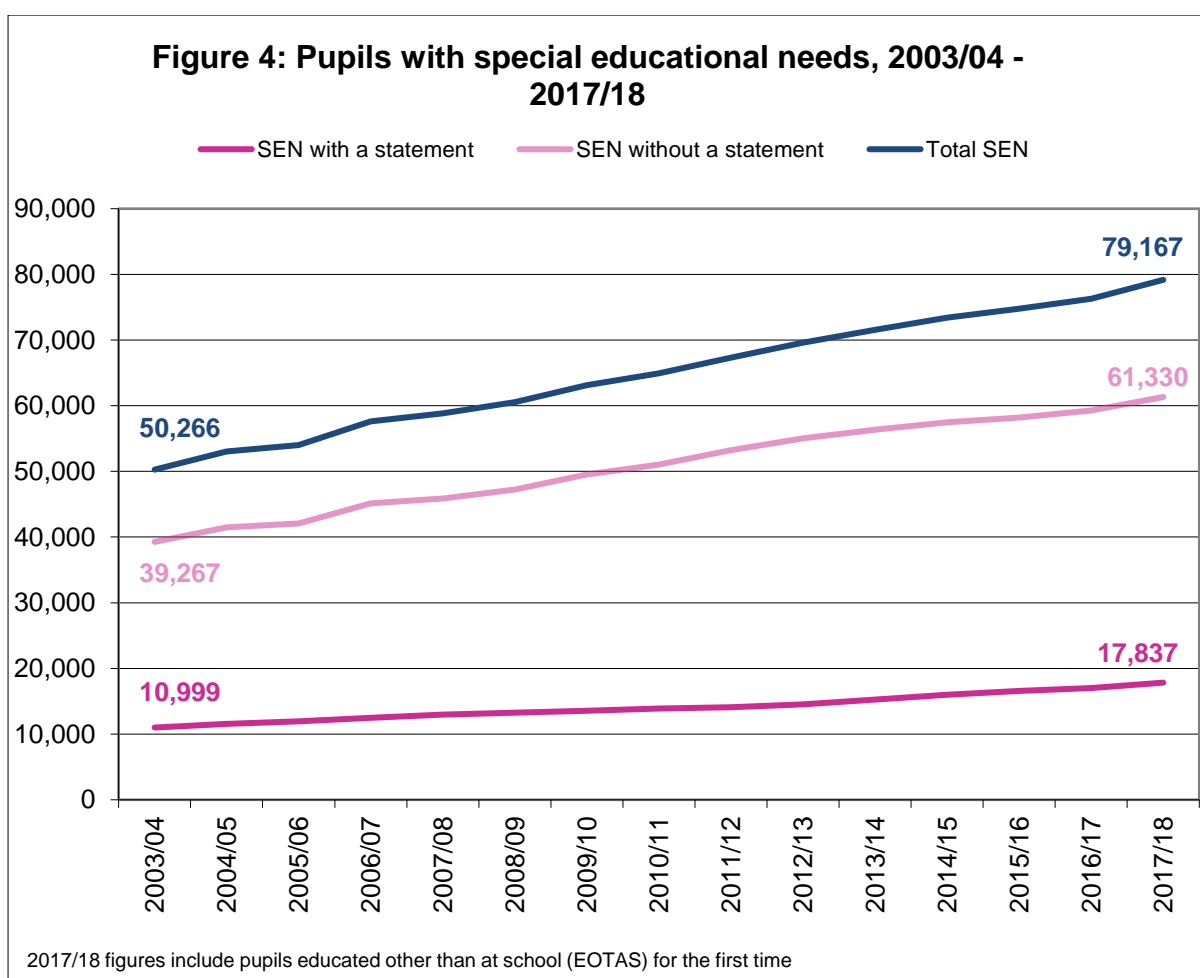
Overall, 62% of all 16 and 17 year olds in the population are studying A Level or equivalent qualifications in schools. This has stabilised in recent years but still represents a large increase from 46% in 2003/04.

- This differs substantially by gender; 68% of all girls aged 16 or 17 are studying A Levels or equivalent in schools compared to 51% of all boys.

Section 4: Special education

4.1. Special educational needs

- More than 79,000 pupils in schools have some form of special educational needs; this is 23.0% of the entire school population. Of this, more than 17,800, or 5.2% of pupils, have a statement of special educational needs⁷ (Table 7).
- The number of pupils with special educational needs has been steadily rising, with more than 2,800 pupils with any needs and 800 additional pupils with statements compared to last year (Figure 4).



⁷ A statement of special educational needs is issued to children with the most severe needs. It sets out the child's needs and the help they should have.

4.2. Special school enrolments

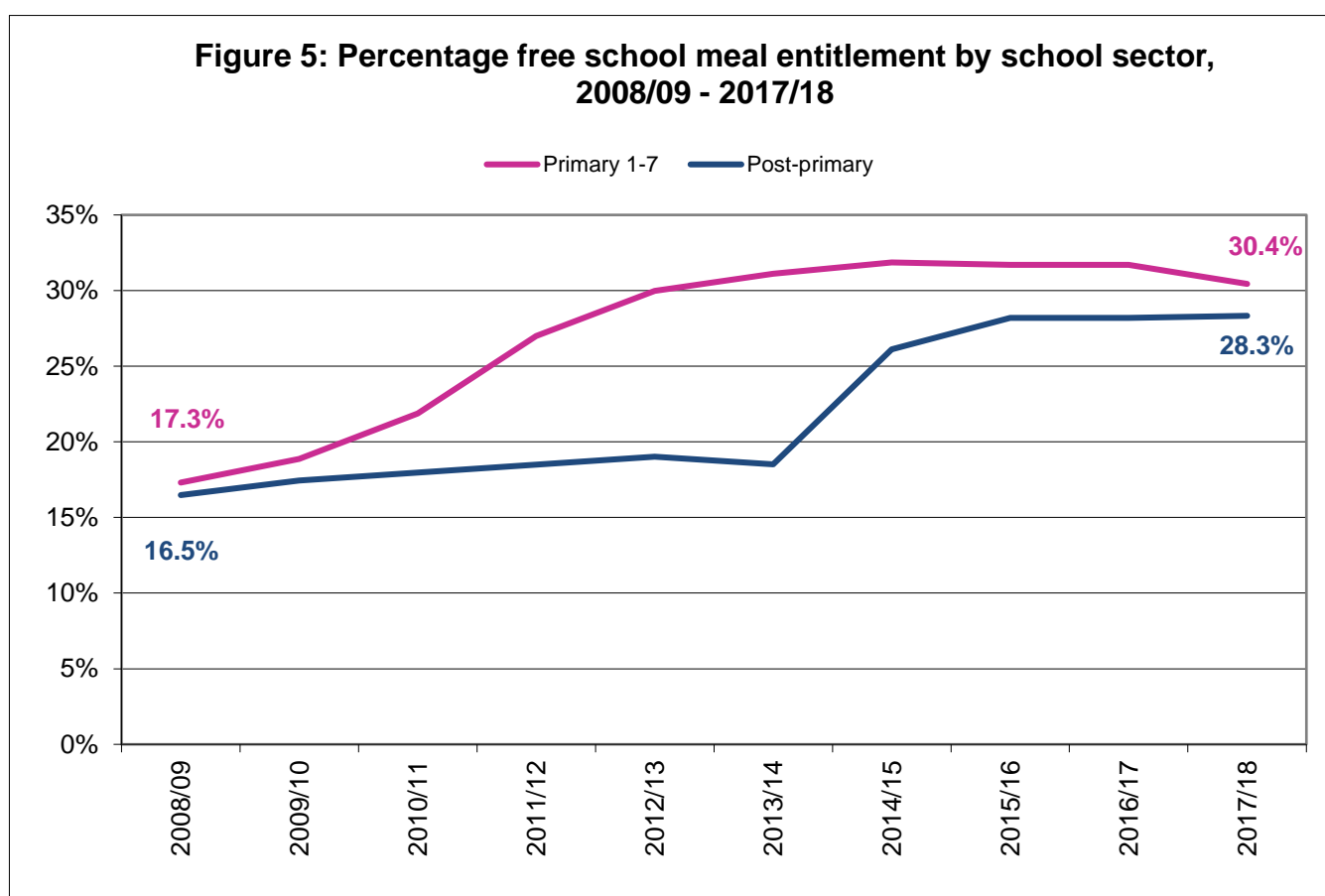
- More than 5,700 pupils are enrolled in 39 dedicated special schools (Table 1b; Table 2a). In addition to this, more than 1,800 are educated in learning support centres in primary and post-primary schools across 92 schools.
- Pupils with special educational needs are increasingly being educated in mainstream schools rather than special schools. In 2003/04, 39.6% of statemented pupils⁸ and 9.8% of pupils with any needs attended special schools. In 2017/18 the corresponding figures have dropped to 30.5% and 7.5% respectively.

⁸ Figures relate to primary (years 1-7) and post-primary pupils only

Section 5: Free school meal entitlement⁹

- The overall percentage of children entitled to free school meals has dropped from 30.7% to 29.9% this year. This equates to more than 100,000 free school meal entitled pupils in nursery, primary, post-primary and special schools (Table 3).
- Free school meal entitlement differs significantly by school type. Grammar schools (14.2%) and pre-school settings (22.9%) have the lowest proportions of free school meal entitled pupils, whereas non-grammar (39.7%) and special (51.4%) have the highest.

Figure 5: Percentage free school meal entitlement by school sector, 2008/09 - 2017/18



⁹ <https://www.education-ni.gov.uk/articles/school-milk-and-meals-background>

¹⁰ Eligibility under Working Tax Credit free school meal criterion was introduced on a phased basis with Nursery, Foundation Stage and Key Stage 1 pupils eligible from September 2010 and Key Stage 2 pupils eligible from September 2011. It was extended to post-primary pupils from September 2014.

Section 6: Changes in enrolment patterns

This final section details changes in enrolment patterns in schools in recent years.

6.1. Diversity in schools

- Schools are increasingly becoming more ethnically diverse. There are more than 14,400 pupils in schools in Northern Ireland recorded as “non-white”, and this represents 4.2% of the school population (Table 6a). This is an increase of more than 4,400 pupils and 1.1 percentage points compared to five years prior.
- There is also a rise year-on-year in the number of pupils whose first language is not English. In 2017/178, there are approximately 90 first languages spoken by pupils, with Polish and Lithuanian being the most common behind English.
- As such, there has been an increase in the number and proportion of newcomer pupils in schools in Northern Ireland (Table 6b). A newcomer pupil is one who has enrolled in a school but who does not have the satisfactory language skills to participate fully in the school curriculum. In 2017/18, there are more than 15,200 newcomer pupils accounting for 4.4% of the school population. This has risen by almost 5,500 pupils from five years prior.
- The growth in diversity in the school system may be explained by increased levels of migration among school age children over the last number of years¹¹.

6.2. Integrated education

- There are over 23,000 pupils enrolled in integrated schools – almost 10,900 in primary schools and more than 12,000 in post-primary schools. The number enrolled has increased by almost 500 pupils compared to last year, and over 1,500 pupils compared to five years ago.
- This growth is mainly seen in primary schools, and could be explained by the fact that three primary schools transformed to integrated status in the last two years.

¹¹ <https://www.nisra.gov.uk/sites/nisra.gov.uk/files/publications/Net-Mig-sya-0016.xls>

6.3. Irish medium education

- Almost 6,200 pupils participate in funded Irish medium education, with just less than 5,000 pupils educated in dedicated Irish medium schools and pre-school settings and more than 1,200 pupils educated in Irish medium units attached to English-medium schools (Table 2b).
- The total number of pupils in funded Irish medium education has steadily risen over time, increasing by over 1,500 pupils since 2012/13 and more than 300 pupils since last year. Most of this increase is coming from greater enrolments in Irish medium schools rather than units.

6.4. Educated other than at school (EOTAS)

- This year, for the first time, data was collected on pupils educated in a setting other than a school (EOTAS centres). EOTAS makes educational provision for children with social, emotional, behavioural, medical or other issues who, without its provision cannot access suitable education.
- In total, 617 pupils were enrolled in EOTAS centres in October 2017. This includes pupils that are 'dual registered' with a mainstream school, and may be accessing the EOTAS centre for a temporary period. Just 50 pupils are 'single registered' at EOTAS centres; this means that they no longer have a link to a mainstream school.

Notes for readers

National Statistics

1. The United Kingdom Statistics Authority has designated these statistics as National Statistics, in accordance with the Statistics and Registration Service Act 2007 and signifying compliance with the Code of Practice for Official Statistics.

Designation can be broadly interpreted to mean that the statistics:

- meet identified user needs;
- are well explained and readily accessible;
- are produced according to sound methods, and
- are managed impartially and objectively in the public interest.

Once statistics have been designated as National Statistics it is a statutory requirement that the Code of Practice shall continue to be observed.

2. For general enquiries about National Statistics, contact the National Statistics Public Enquiry Service on 0845 601 3034
minicom: 01633 812399

E-mail: info@statistics.gov.uk

Fax: 01633 652747

Letters: Customer Contact Centre, Office for National Statistics, Rm 1.101,
Government Buildings, Cardiff Road, Newport, NP10 8XG

3. You can also find National Statistics on the Internet: <http://www.statistics.gov.uk>

School Census

4. The statistics in this release have been derived from the annual school census; details can be found at <https://www.education-ni.gov.uk/publications/school-enrolments-data-collection-and-validation>. For voluntary and private pre-school centres, and nursery schools, the census consists of a paper return comprising a number of tables; for post-primary, primary and special schools, and EOTAS centres, it consists of a return comprising individual pupil records, made by Electronic Data Interchange. The tables presented in the release reflect key information on enrolments, as determined by Departmental needs and also on requests for information from other sources.

5. The figures for pre-school children in this release relate to children in funded pre-school education. The figures for nursery classes relate to approved nursery classes in primary schools. The figures for reception refer to pupils who were below compulsory school age at 1st July 2017, who were admitted to a reception class or group in primary school following their 4th birthday. Schools may admit reception pupils throughout the year, but only those who have been admitted or will be admitted by 31st October are counted in the school census.
6. Further statistics relating to school numbers and enrolments can be found on the DE website (www.education-ni.gov.uk) under the Facts and Figures section.

The DE website presents figures taken from the school census, summarised at Northern Ireland and school level. Statistics on pupil attendance, pupil: teacher ratios, school leaver destinations and qualifications may also be accessed via the website.

7. The data is produced at aggregate level only, therefore individual pupils cannot be identified. More information on confidentiality can be found in the DE Confidentiality and Access Statement at the following link:
<https://www.education-ni.gov.uk/sites/default/files/publications/education/Confidentiality%20and%20Access.pdf>

Data quality and coverage

8. In some cases, percentages may not sum due to rounding.

School types

9. Definitions of school management types are as follows:
 - **Controlled:** Schools are managed and funded by the Education Authority (EA) through Boards of Governors (BoG). Primary and post-primary school BoGs consist of representatives of transferors - mainly the Protestant churches - along with representatives of parents, teachers and the EA.
 - **Voluntary:** Self-governing schools, generally of long standing, originally established to provide an academic education at post primary level on a fee paying basis. Now funded by the Department and managed by Boards of Governors. The BoGs are constituted in accordance with each school's scheme of management - usually representatives of foundation governors, parents, teachers and in most cases, DE or EA representatives. The BoGs is the employing authority and is responsible for the employment of all staff in its school.
 - **Maintained** schools are managed by Boards of Governors which consist of members nominated by trustees, along with representatives of parents, teachers and the Education Authority. These schools are funded through the Education Authority for their running costs and directly by the Department in relation to capital building works. For **Catholic Maintained** schools, the Employing Authority is the Council for Catholic Maintained Schools (CCMS). **Other maintained** schools

are any schools that are not Catholic maintained. They are typically, but not exclusively, **Irish medium schools**.

- **Controlled integrated:** Controlled schools which have acquired integrated status.
- **Grant Maintained integrated:** Self-governing schools with integrated education status, funded directly by the Department of Education and managed by Boards of Governors. The BoG is the employing authority and responsible for employing staff.

10. Definitions of other school types are as follows

- A **special school** is a controlled or voluntary school which is specially organised to provide education for pupils with special needs and is recognised by the DE as a special school.
- An **independent school** is a school at which full-time education is provided for pupils aged from four to 16 and is not grant aided. These schools set their own curriculum and admissions policies and are funded by fees paid by parents and income from investments. Each independent school must be registered with DE and is inspected regularly by ETI.
- **Education Other Than at School (EOTAS)** includes all forms of education that takes place outside the formal school environment.

Revisions

11. The 2017/18 figures in this statistical release are based on information as at 6 October 2017. They may be subject to minor revision and these will be notified in accordance with our revisions policy. This can be accessed at <https://www.education-ni.gov.uk/sites/default/files/publications/education/Revisions%20policy.pdf>

Further enquiries

Request for further information should be addressed to:-

Gemma Thomson
Statistics and Research Team
Department of Education
Rathgael House
Balloo Road
Rathgill
BANGOR
Co. Down
BT19 7PR
Telephone (028) 9127 9707/ Fax (028) 9127 9594
e-mail: statistics@education-ni.gov.uk

Special analyses of the school census can be undertaken on request.

Press enquiries should be made to the Department's Press Office at the same address, telephone (028) 9127 9207 / fax (028) 9127 9271.

Feedback on this publication can be provided directly via the contact details above or via the website: <https://www.education-ni.gov.uk/contacts/statistics-and-research-team>

Table 1a: The number of pre-school providers with funded places, by centre type and management type, 2012/13-2017/18

		2012/13	2013/14	2014/15	2015/16	2016/17	2017/18
Nursery Schools	Controlled	65	64	64	64	64	64
	Catholic Maintained	32	32	32	32	31	31
	TOTAL	97	96	96	96	95	95
Primary Schools with Funded Nursery Units	Controlled	109	112	114	115	116	118
	Catholic Maintained¹	87	88	88	89	90	90
	Other Maintained²	11	11	13	13	14	15
	Controlled Integrated	3	3	3	3	3	4
	Grant Maintained Integrated	14	14	14	15	15	16
	TOTAL	224	228	232	235	238	243
Primary Schools with Funded Reception Classes	Controlled	31	26	22	21	23	18
	Catholic Maintained	56	45	43	42	35	31
	Other Maintained	1	1	1	1	-	-
	Controlled Integrated	4	4	4	3	3	3
	Grant Maintained Integrated	-	-	-	-	-	-
	TOTAL	92	76	70	67	61	52
Voluntary and private pre-School centres with funded places	Voluntary	343	343	342	343	343	329
	Private	47	53	59	62	56	54
	TOTAL	390	396	401	405	399	383
All Centres	GRAND TOTAL³	802	795	798	803	793	773

1 Includes one Irish medium school with a nursery class in 2017/18

2 Excludes one Irish medium school with a nursery class in 2017/18

3 The sum of the subtotals will not sum to the grand total as some primary schools have both nursery and reception classes

Table 1b: The number of schools by school type and management type, 2012/13-2017/18

		2012/13	2013/14	2014/15	2015/16	2016/17	2017/18
Nursery Schools	Controlled	65	64	64	64	64	64
	Catholic Maintained	32	32	32	32	31	31
	TOTAL	97	96	96	96	95	95
Primary Schools	Controlled ¹	374	370	370	368	366	365
	Catholic Maintained ^{2,5,8}	387	384	381	374	370	367
	Other Maintained	25	25	25	25	25	25
	Irish Medium ³	4	4	4	4	3	3
	Other	19	19	19	20	22	22
	TOTAL	832	825	822	814	809	805
Preparatory Departments ⁴	Controlled	3	3	3	2	1	1
	Voluntary	-	-	-	-	-	-
	Schools under Catholic Management	12	11	11	11	11	11
Schools under Other Management	15	14	14	13	12	12	
	TOTAL	15	14	14	13	12	12
Secondary (Non Grammar) Schools	Controlled	55	53	51	49	49	49
	Catholic Maintained ⁶	71	68	68	64	64	62
	Other Maintained	1	1	1	2	2	2
	Irish Medium	-	-	-	-	-	-
	Other	5	5	5	5	5	5
	TOTAL	147	142	140	135	135	133
Grammar Schools	Controlled	17	17	18	17	16	16
	Voluntary	29	29	29	29	29	29
	Schools under Catholic Management ⁷	22	22	21	21	21	21
Schools under Other Management	68	68	68	67	66	66	
	TOTAL	68	68	68	67	66	66
<u>Special Schools</u>	TOTAL	40	40	39	39	39	39
<u>Hospital Schools</u>	TOTAL	1	1	1	1	1	1
<u>Independent Schools</u>	TOTAL	15	15	14	14	14	14
All schools	GRAND TOTAL	1,200	1,187	1,180	1,166	1,159	1,153

¹ Includes two Irish Medium Controlled schools in 2017/18

² Includes one Irish Medium Catholic Maintained school in 2017/18

³ Excludes two Irish Medium Controlled schools and one Irish Medium Catholic Maintained school in 2017/18

⁴ These are part of grammar schools.

⁵ Includes 7 schools with Irish medium units in 2017/18

⁶ Includes 2 schools with Irish medium units in 2017/18

⁷ Includes 1 school with Irish medium units in 2017/18

⁸ The 2017/18 total includes St Matthew's PS, Garvaghey, which closed on 31st January 2018

Table 2a: Pupils by school type and management type, 2017/18

	Controlled	Catholic Maintained	Other Maintained	Controlled Integrated	Grant Maintained Integrated	Voluntary		Non Grant-Aided	Voluntary pre-school centres	Private pre-school centres	EOTAS Centres	Grand Total
						Schools under Catholic Management	Schools under Other Management					
<u>PRE-SCHOOL EDUCATION IN OTHER CENTRES (FUNDED PLACES ONLY)</u>												
Playgroups Part-time	-	-	-	-	-	-	-	-	6,779	317	-	7,096
Day Nurseries Part-time	-	-	-	-	-	-	-	-	70	788	-	858
TOTAL	-	-	-	-	-	-	-	-	6,849	1,105	-	7,954
<u>NURSERY</u>												
Nursery Schools Full-time	2,379	1,564	-	-	-	-	-	-	-	-	-	3,943
Part-time	1,738	156	-	-	-	-	-	-	-	-	-	1,894
Nursery Classes Full-time	2,254	2,394	293	75	130	-	-	-	-	-	-	5,146
Part-time	2,254	1,525	157	16	425	-	-	-	-	-	-	4,377
TOTAL	8,625	5,639	450	91	555	-	-	-	-	-	-	15,360
<u>PRIMARY</u>												
Reception	62	102	-	22	-	-	-	-	-	-	-	186
Primary Schools (Year 1 - Year 7)	79,173	79,247	3,388	4,209	6,017	-	-	-	-	-	-	172,034
Prep. Departments (Year 1- Year 7)	80	-	-	-	-	-	1,630	-	-	-	-	1,710
TOTAL	79,315	79,349	3,388	4,231	6,017	-	1,630	-	-	-	-	173,930
<u>SECONDARY (Year 8 - Year 14)</u>												
Secondary (Non Grammar)	27,724	37,075	734	2,587	9,607	-	-	-	-	-	-	77,727
Grammar	14,111	-	-	-	-	28,192	20,515	-	-	-	-	62,818
TOTAL	41,835	37,075	734	2,587	9,607	28,192	20,515	-	-	-	-	140,545
<u>SPECIAL</u>												
<u>Educated off site but not at school (EOTAS)</u>	5,389	267	79	-	-	-	-	-	-	-	-	5,735
<u>INDEPENDENT</u>	-	-	-	-	-	-	-	-	-	-	50	50
	-	-	-	-	-	-	-	604	-	-	-	604
GRAND TOTAL	135,164	122,330	4,651	6,909	16,179	28,192	22,145	604	6,849	1,105	50	344,128

Note:

- Enrolments for special schools and EOTAS centres relate those where pupils are single registered to the school, or are dual registered and the special school/EOTAS centre is recorded as the main school. Enrolments including these dual registered pupils are 5,779 for special schools and 617 for EOTAS centres. These additional pupils have been counted in another setting in the table above
- Previous bulletins provided enrolments in hospital schools. These pupils have been counted in their "main" school. There were 17 enrolled on Census day this year.

Table 2b: Pupils in Irish-medium education, 2012/13 - 2017/18

	2012/13	2013/14	2014/15	2015/16	2016/17	2017/18
Voluntary and private pre-schools - funded places	468	476	488	481	485	473
Nursery Classes in Irish-medium Schools						
Full-time	309	312	315	354	318	319
Part-time	-	-	52	26	76	105
Nursery Classes in Irish-medium units						
Full-time	26	26	30	30	30	26
Part-time	-	-	-	-	-	-
TOTAL	803	814	885	891	909	923
<i>PRIMARY</i>						
Primary Schools (Year 1 - Year 7)						
schools	2,411	2,570	2,738	2,906	3,103	3,324
units	644	686	720	764	802	832
TOTAL	3,055	3,256	3,458	3,670	3,905	4,156
<i>POST-PRIMARY (Year 8 - Year 14)</i>						
Post-primary Schools						
schools	541	564	581	620	694	734
units	228	267	332	344	355	371
TOTAL	769	831	913	964	1,049	1,105
<i>INDEPENDENT</i>	6	15	-	-	-	-
GRAND TOTAL	4,633	4,916	5,256	5,525	5,863	6,184

Note:

1. Figures relate to funded Irish medium provision only

Table 2c: Pupils in Integrated education¹, 2012/13 - 2017/18

	2012/13	2013/14	2014/15	2015/16	2016/17	2017/18	
<i>PRIMARY</i>							
Nursery Classes	Full-time	212	212	213	212	211	205
	Part-time	287	317	337	367	388	441
Reception	10	10	8	15	18	22	
Year 1 - Year 7	8,881	9,100	9,404	9,529	9,953	10,226	
TOTAL	9,390	9,639	9,962	10,123	10,570	10,894	
<i>SECONDARY (Year 8 - Year 14)</i>							
Year 8 - Year 12	10,291	10,210	10,063	9,988	10,186	10,366	
Sixth form²	1,822	1,896	1,931	1,906	1,851	1,828	
TOTAL	12,113	12,106	11,994	11,894	12,037	12,194	
GRAND TOTAL	21,503	21,745	21,956	22,017	22,607	23,088	

Note:

1. Figures include children attending Controlled Integrated schools and Grant Maintained Integrated Schools.
2. Sixth form figures are based solely on pupils studying A Level or equivalent qualifications

Table 3: Pupils entitled to Free School Meals¹ by school type and management type, 2017/18

Numbers and percentages²

		Number	Enrolment	Percentage
Voluntary and Private Pre-School Centres (funded places only)	Voluntary	748	6,849	10.9
	Private	38	1,105	3.4
	TOTAL	786	7,954	9.9
Nursery Schools Full-time	Controlled	1,007	2,379	42.3
	Catholic Maintained	749	1,564	47.9
	TOTAL	1,756	3,943	44.5
Nursery Schools Part-time	Controlled	186	1,738	10.7
	Catholic Maintained	10	156	6.4
	TOTAL	196	1,894	10.3
Nursery Classes Full-time	Controlled	928	2,254	41.2
	Catholic Maintained	1,012	2,394	42.3
	Other Maintained	120	293	41.0
	Controlled Integrated	42	75	56.0
	Grant Maintained Integrated	52	130	40.0
TOTAL	2,154	5,146	41.9	
Nursery Classes Part-time	Controlled	233	2,254	10.3
	Catholic Maintained	165	1,525	10.8
	Other Maintained	18	157	11.5
	Controlled Integrated	8	16	50.0
	Grant Maintained Integrated	46	425	10.8
TOTAL	470	4,377	10.7	
Reception pupils ³	TOTAL	23	186	12.4
TOTAL PRE-SCHOOL		5,385	23,500	22.9
Primary Schools (Year 1-Year 7)	Controlled	22,547	79,173	28.5
	Catholic Maintained	25,983	79,247	32.8
	Other Maintained - Irish Medium	1,293	3,032	42.6
	Other Maintained - Other	57	356	16.0
	Controlled Integrated	1,378	4,209	32.7
	Grant Maintained Integrated	1,601	6,017	26.6
TOTAL	52,859	172,034	30.7	
Prep. Departments ³	TOTAL	30	1,710	1.8
ALL PRIMARY AND PREP YEAR 1 - 7 PUPILS		52,889	173,744	30.4
Secondary (Non Grammar) Schools	Controlled	9,809	27,224	36.0
	Catholic Maintained	15,966	37,075	43.1
	Other Maintained - Irish Medium	433	734	59.0
	Controlled Integrated	1,029	2,587	39.8
	Grant Maintained Integrated	3,629	9,607	37.8
TOTAL	30,866	77,727	39.7	
Grammar Schools	Controlled	1,758	14,111	12.5
	Voluntary - Schools under Catholic Management	2,000	20,515	9.7
	Voluntary - Schools under Other Management	5,193	28,192	18.4
	TOTAL	8,951	62,818	14.2
ALL POST-PRIMARY SCHOOLS		39,817	140,545	28.3
ALL PRIMARY AND POST-PRIMARY SCHOOLS		92,706	314,289	29.5
ALL SPECIAL SCHOOLS		2,949	5,735	51.4
EOTAS Centres		21	50	42.0
ALL NURSERY, PRIMARY, POST-PRIMARY SCHOOLS, SPECIAL SCHOOLS and EOTAS Centres⁵		100,275	335,570	29.9

* Fewer than 5 cases.

Number suppressed.

¹ Income Support and income-based Jobseeker's Allowance are two of the benefits which determine eligibility for free school meals. As school meals are not universally available to children in pre-school education, parental receipt of these benefits is a better indicator of social disadvantage for the pre-school sector. Pupils who are recorded as entitled to free school meals in nursery classes in primary schools are also included in the totals.

² Percentages express the number of children in funded places whose parents were in receipt of Income Support or income-based Jobseeker's Allowance at the time of first application for admission, as a proportion of all children in funded places. Thus, for example, 42.3% of children in full-time places in controlled nursery schools had parents in receipt of these benefits.

³ Due to the small numbers when analysing by management type, only the total has been provided.

⁴ Enrolments for special schools and EOTAS centres relate those where pupils are single registered to the school, or are dual registered and the special school/EOTAS centre is recorded as the main school.

⁵ Overall total excludes voluntary and private pre-school centres

Table 4: Average class size^{1,2,3,4} by school type and management type, 2017/18

		Average number of pupils per class
Nursery Schools	Controlled	26
	Catholic Maintained	26
	TOTAL	26
Nursery Classes	Controlled	26
	Catholic Maintained ⁵	26
	Other Maintained	27
	Irish Medium	26
	Other	23
	Controlled Integrated	26
	Grant Maintained Integrated	26
TOTAL	26	
Primary Schools (Year 1 - Year 7) ⁵	Controlled ⁶	25
	Catholic Maintained ⁷	25
	Other Maintained	21
	Irish Medium ⁸	22
	Other	25
	Controlled Integrated	27
	Grant Maintained Integrated	25
TOTAL	25	
Preparatory Departments (Year 1 - Year 7)	Controlled	11
	Voluntary	-
	Schools under Catholic Management	21
	Schools under Other Management	20
TOTAL		

¹ Class size data is only collected in respect of nursery and primary schools and prep. departments.

² Children in learning support centres are excluded.

³ Any reception pupils in primary classes are excluded.

⁴ Any primary school classes that are solely reception have been excluded.

⁵ Includes one Irish medium school.

⁶ Includes two Irish medium schools.

⁷ Includes one Irish medium school.

⁸ Excludes two Controlled and one Catholic maintained Irish medium school.

Table 5: Religion of pupils by school type and management type, 2017/18
Nursery, Primary, Post Primary and Special Schools

	Protestant	Catholic	Other Christian	Non Christian	No Religion / Not recorded	Total
Voluntary and Private Pre-Voluntary School Centres (funded children only)	1,789	3,217	138	#	#	6,849
Private	348	296	32	*	#	1,105
TOTAL	2,137	3,513	170	29	2,105	7,954
Nursery Schools	1,835	1,153	268	44	817	4,117
Controlled	1,835	1,153	268	44	817	4,117
Catholic Maintained	24	1,494	24	14	164	1,720
TOTAL	1,859	2,647	292	58	981	5,837
Nursery Classes & Reception	2,335	580	280	62	1,313	4,570
Controlled	2,335	580	280	62	1,313	4,570
Catholic Maintained	69	3,724	30	68	130	4,021
Other Maintained	40	345	7	*	#	450
Controlled Integrated	41	35	7	*	#	113
Grant Maintained Integrated	176	223	36	#	#	555
TOTAL	2,661	4,907	360	142	1,639	9,709
Primary Schools (Year 1 - Year 7)	50,695	6,057	5,042	893	16,486	79,173
Controlled	50,695	6,057	5,042	893	16,486	79,173
Catholic Maintained	635	75,634	632	738	1,608	79,247
Other Maintained	260	2,833	36	*	#	3,388
Controlled Integrated	1,621	1,199	235	84	1,070	4,209
Grant Maintained Integrated	1,807	2,511	413	#	#	6,017
TOTAL	55,018	88,234	6,358	1,800	20,624	172,034
Prep. Departments (Year 1 - Year 7)	46	*	#	*	26	80
Controlled	46	*	#	*	26	80
Voluntary	740	#	#	#	410	1,630
TOTAL	786	223	224	41	436	1,710
Secondary (Non Grammar) Schools	21,801	1,047	1,177	154	3,545	27,724
Controlled	21,801	1,047	1,177	154	3,545	27,724
Catholic Maintained	#	35,393	#	275	#	37,075
Other Maintained	*	683	*	-	#	734
Controlled Integrated	1,541	407	117	35	487	2,587
Grant Maintained Integrated	3,803	3,916	523	127	1,238	9,607
TOTAL	27,711	41,446	2,138	591	5,841	77,727
Grammar Schools (Year 8 - Year 14)	10,016	1,327	806	112	1,850	14,111
Controlled	10,016	1,327	806	112	1,850	14,111
Voluntary - Schools under Catholic Management	336	27,212	174	119	351	28,192
Voluntary - Schools under Other Management	12,878	2,708	1,605	323	3,001	20,515
TOTAL	23,230	31,247	2,585	554	5,202	62,818
Special Schools	2,036	2,208	169	52	924	5,389
Controlled	2,036	2,208	169	52	924	5,389
Catholic Maintained	7	245	*	#	#	267
Other Maintained	31	29	*	*	#	79
TOTAL	2,074	2,482	172	60	947	5,735
EOTAS Centres	11	31	*	-	#	50
ALL FUNDED PRE-SCHOOL, NURSERY, PRIMARY, POST-PRIMARY AND SPECIAL SCHOOLS	115,487	174,731	12,300	3,275	37,782	343,574

* Fewer than 5 cases.

Number suppressed.

¹ Enrolments for special schools and EOTAS centres relate those where pupils are single registered to the school, or are dual registered and the special school/EOTAS centre is recorded as the main school.

Table 6a: Ethnicity of pupils by school type, 2017/18
Funded pre-school education, Primary, Post Primary and Special Schools

	White (excluding Irish Traveller)	Chinese	Irish Traveller	Indian/Sri Lankan	Pakistani	Black	Other ethnic group	Mixed ethnic group	Total
Voluntary and Private Pre-School Centres (funded children only)	7,635	23	18	17	5	33	98	125	7,954
Nursery Schools	5,549	36	12	32	7	32	64	105	5,837
Nursery Classes & Reception	9,222	52	36	75	14	56	102	152	9,709
Primary Schools & Prep. Departments (Year 1 - Year 7)	165,926	666	668	933	178	870	1,910	2,593	173,744
Secondary (Non Grammar) Schools	74,922	154	272	125	57	514	904	779	77,727
Grammar Schools (Year 8 - Year 14)	60,396	454	11	474	72	165	501	745	62,818
Special Schools	#	18	52	26	6	#	61	#	5,735
EOTAS Centres	#	-	*	-	-	*	-	*	50
ALL FUNDED PRE-SCHOOL, NURSERY, PRIMARY, POST-PRIMARY, SPECIAL SCHOOLS and EOTAS Centres	329,169	1,403	1,070	1,682	339	1,696	3,640	4,575	343,574

* Fewer than 5 cases.

Number suppressed.

¹ Enrolments for special schools and EOTAS centres relate those where pupils are single registered to the school, or are dual registered and the special school/EOTAS centre is recorded as the main school.

Table 6b: Newcomer pupils by school type, 2012/13 - 2017/18
Nursery, Primary, Post Primary and Special Schools

	2012/13		2013/14		2014/15		2015/16		2016/17		2017/18	
	n	%	n	%	n	%	n	%	n	%	n	%
Voluntary and Private Pre-School Centres (funded children only)	330	3.9%	341	4.1%	335	3.9%	364	4.2%	356	4.3%	337	4.2%
Nursery Schools	327	5.5%	330	5.6%	323	5.5%	382	6.5%	409	7.0%	452	7.7%
Nursery Classes & Reception	512	5.6%	570	6.1%	598	6.3%	654	6.8%	691	7.1%	699	7.2%
Primary Schools & Prep. Departments (Year 1 - Year 7)	5,969	3.8%	6,854	4.2%	8,080	4.9%	8,853	5.2%	9,703	5.7%	10,724	6.2%
Secondary (Non Grammar) Schools	2,244	2.7%	2,288	2.8%	2,219	2.8%	2,279	2.9%	2,381	3.1%	2,562	3.3%
Grammar Schools (Year 8 - Year 14)	274	0.4%	213	0.3%	232	0.4%	271	0.4%	262	0.4%	277	0.4%
Special Schools	91	2.0%	101	2.1%	113	2.2%	129	2.5%	141	2.6%	169	2.9%
EOTAS Centres	-	-	-	-	-	-	-	-	-	-	-	0.0%
ALL FUNDED PRE-SCHOOL, NURSERY, PRIMARY, POST-PRIMARY, SPECIAL SCHOOLS and EOTAS CENTRES	9,747	2.9%	10,697	3.2%	11,900	3.5%	12,932	3.8%	13,943	4.1%	15,220	4.4%

1. A newcomer pupil is one who has enrolled in a school but who does not have the satisfactory language skills to participate fully in the school curriculum, and the wider environment, and does not have a language in common with the teacher, whether that is English or Irish. This has previously been referred to as English an Additional Language. It does not refer to indigenous pupils who choose to attend an Irish medium school.

² Enrolments for special schools and EOTAS centres relate those where pupils are single registered to the school, or are dual registered and the special school/EOTAS centre is recorded as the main school.

Table 7: Percentage of children with Special Education Needs¹ at schools and funded pre-school education centres in 2017/18

	STAGE 1 - Statemented	4	TOTAL ENROLMENT	% Statemented children	% SEN children (non- statemented)	% SEN children (stage 1 - 5)
VOLUNTARY and PRIVATE PRE-SCHOOL EDUCATION CENTRES	29	970	7,954	0.4%	12.2%	12.6%
NURSERY SCHOOLS						
Total nursery school pupils	74	1,407	5,837	1.3%	24.1%	25.4%
PRIMARY SCHOOLS and PREPARATORY DEPARTMENTS						
Total nursery class pupils	70	376	9,523	0.7%	3.9%	4.7%
Total reception pupils	-	*	186	0.0%	*	*
Primary schools (year 1 - 7)	5,867	33,237	172,034	3.4%	19.3%	22.7%
Grammar school Preparatory Depts.(year 1 - 7)	33	292	1,710	1.9%	17.1%	19.0%
Total year 1 - 7 pupils	5,900	33,529	173,744	3.4%	19.3%	22.7%
Total primary pupils	5,970	33,907	183,453	3.3%	18.5%	21.7%
POST PRIMARY SCHOOLS						
Secondary (non grammar) schools	5,359	19,200	77,727	6.9%	24.7%	31.6%
Grammar Schools	994	5,479	62,818	1.6%	8.7%	10.3%
Total post primary pupils	6,353	24,679	140,545	4.5%	17.6%	22.1%
SPECIAL SCHOOLS						
Total	5,386	349	5,735	93.9%	6.1%	100.0%
EOTAS Centres						
Total	25	#	50	50.0%	#	#
INDEPENDENT SCHOOLS³						
Total	N/A	N/A	N/A	N/A	N/A	N/A
ALL SCHOOLS						
Total	17,808	60,360	335,620	5.3%	18.0%	23.3%
ALL SCHOOLS AND PRE-SCHOOL EDUCATION CENTRES						
Total	17,837	61,330	343,574	5.2%	17.9%	23.0%

1. Children with Special Education Needs are assessed under the 5 stages of the SEN Code of Practice.

2. Enrolments for special schools and EOTAS centres relate those where pupils are single registered to the school, or are dual registered and the special school/EOTAS centre is recorded as the main school.

3. Special needs data is not collected in respect of Independent schools.