



## Statistical Bulletin 3/2016

# Annual enrolments at schools and in funded pre-school education in Northern Ireland, 2015/16

**Published date:** 1 March 2016

**Revised:** 4 March 2016

**Coverage:** Northern Ireland

**Frequency:** Annual

**Theme:** Children, Education and Skills

**Issued by:**

Statistics & Research Team  
Department of Education  
Rathgael House  
Balloo Road, Rathgill  
BANGOR BT19 7PR

**Telephone**

Press Office:

028 9127 9207

Statistics & Research Team:

028 9127 9717

**Statistician:** Paul Matthews

**Email:** [statistics@deni.gov.uk](mailto:statistics@deni.gov.uk)

**Internet**

<http://www.deni.gov.uk/index/facts-and-figures-new.htm>

The purpose of this statistical release is to present final enrolment figures for schools and for children in funded pre-school education for 2015/16.

**Key points:**

- There are 168,669 pupils in **primary** schools (years 1-7), and this has risen by another 3,000 pupils this year to the highest total in almost fifteen years.
- In total 141,112 pupils are enrolled in **post-primary** schools, showing a decline for the fifth year in a row. This drop, however, masks an increase in **grammar** school enrolments this year, and the number of pupils in **sixth form** stabilising at over 30,500.
- There are almost 24,200 pupils in **funded pre-school education**, the highest figure on record. This is more than nine in ten of three year olds in the population.
- More than 100,000 pupils in Northern Ireland are entitled to **free school meals** and this represents three in ten of all pupils.



## Contents

Section	Title	Page
	Introduction	3
1	Funded pre-school education	4
2	Primary school education	6
3	Post-primary school education	8
4	Special education	11
5	Free school meal entitlement	12
6	Changes in enrolment patterns	14
	Notes for readers	15

## Introduction

Enrolment data from the 2015/16 annual school census was released in December 2015. The purpose of this statistical release is to present the final enrolment figures, and a more detailed analysis of this information.

The data are taken from the school census exercise, which ran in October 2015. Data collected through the school census exercise are used by the Department of Education (DE) to inform a wide range of policy areas, including finance allocations, school estate development and planning, special education, school improvement, area based planning, extended schools, additional educational needs, early years and integrated and Irish medium education. Other users include the Education Authority, the Education and Training Inspectorate and to inform responses to Assembly questions and requests from academic researchers, journalists, lobby groups and the public.

Statistics relating to school numbers and enrolments can be found on the Statistics and Research section of the DE website<sup>1</sup>. Analysis is provided at Northern Ireland and school level.

This is an annual publication. Provisional data relating to the 2016/17 academic year will be released in December 2016, with a 2016/17 update of this publication being released in February/March 2017.

---

<sup>1</sup> [http://www.deni.gov.uk/index/facts-and-figures-new/education-statistics/32\\_statistics\\_and\\_research-numbersofschoolsandpupils\\_pg.htm](http://www.deni.gov.uk/index/facts-and-figures-new/education-statistics/32_statistics_and_research-numbersofschoolsandpupils_pg.htm)

## Section 1: Funded pre-school education

### 1.1. Number of institutions

- There are a total of 803 institutions in Northern Ireland providing funded pre-school education (Table 1a).
  - Over half of these are funded voluntary and private pre-school centres<sup>2</sup>, that is, playgroups and day nurseries. This number has risen steadily each year from 380 in 2010/11 to 405 this year.
  - In the same time period, there has been a rise in the number of primary schools with funded nursery units (218 in 2010/11 to 235 in 2015/16), and a substantial decrease in the number of schools with reception pupils (102 to 67 this year)<sup>3</sup>.

### 1.2. Enrolments

- There are almost 24,200 pupils in funded pre-school education (Table 2a), which equates to 92% of all three year olds in the Northern Ireland population<sup>4</sup>.
- Funded pre-school enrolments have steadily increased over the last decade, with approximately an additional 200 pupils in funded pre-school education compared to last year. The number of pupils in each pre-school type has increased slightly this year, bar reception which has dropped from 329 to 241 pupils enrolled.
- Most pre-school pupils are enrolled in either nursery classes in primary schools (9,312) or voluntary and private pre-schools (8,716). (Figure 1).

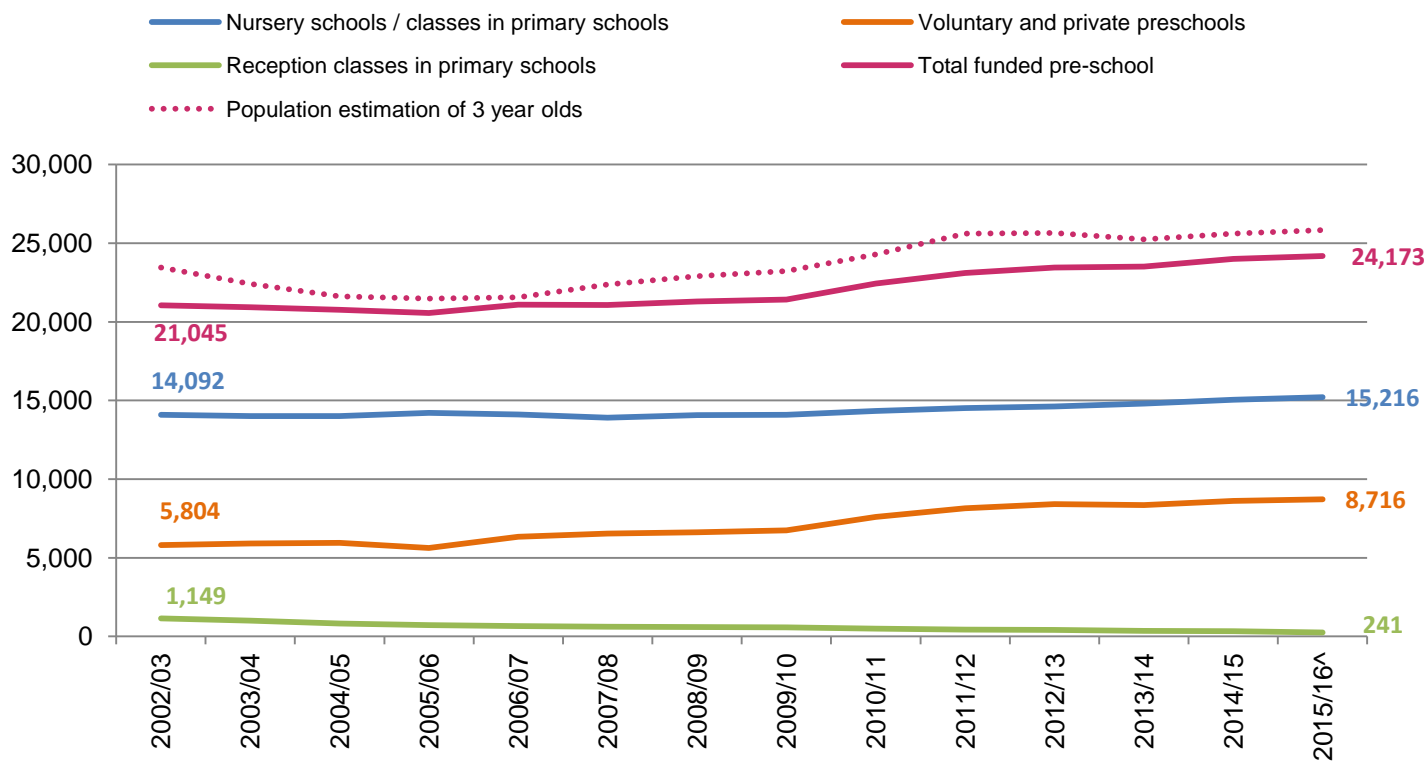
---

<sup>2</sup> There are a total of 498 voluntary and private pre-school centres in Northern Ireland, but just 405 are fully or partially funded by the Department of Education.

<sup>3</sup> Investing in Early Learning, published in 1997, set out the Department's 'intention to replace reception provision with suitable alternative provision so that all children below compulsory school age in school settings will be in planned pre-school provision which meets specified standards' and proposed that 'no new reception provision in primary schools (ie provision in schools where a reception class or group does not exist in the 1998/99 school year) will be funded from September 1999'. This policy was implemented with the introduction of the Pre-School Education Expansion Programme in 1998.

<sup>4</sup> This is calculated by dividing the number of pupils aged 3 according to the NI school census (23,650) by the number of children aged 3 in the 2015 population projections (25,827) (the most recent available at time of publication): <http://www.nisra.gov.uk/archive/demography/population/projections/NPP14-sya.xls>.

**Figure 1: Funded pre-school enrolment by school type, 2002/03 - 2015/16**



<sup>^</sup>2002-2014 population figures are based on NISRA mid-year estimates. As 2015 figures were unavailable at the time of publication, the number of three year olds per the NISRA population projections have been used instead

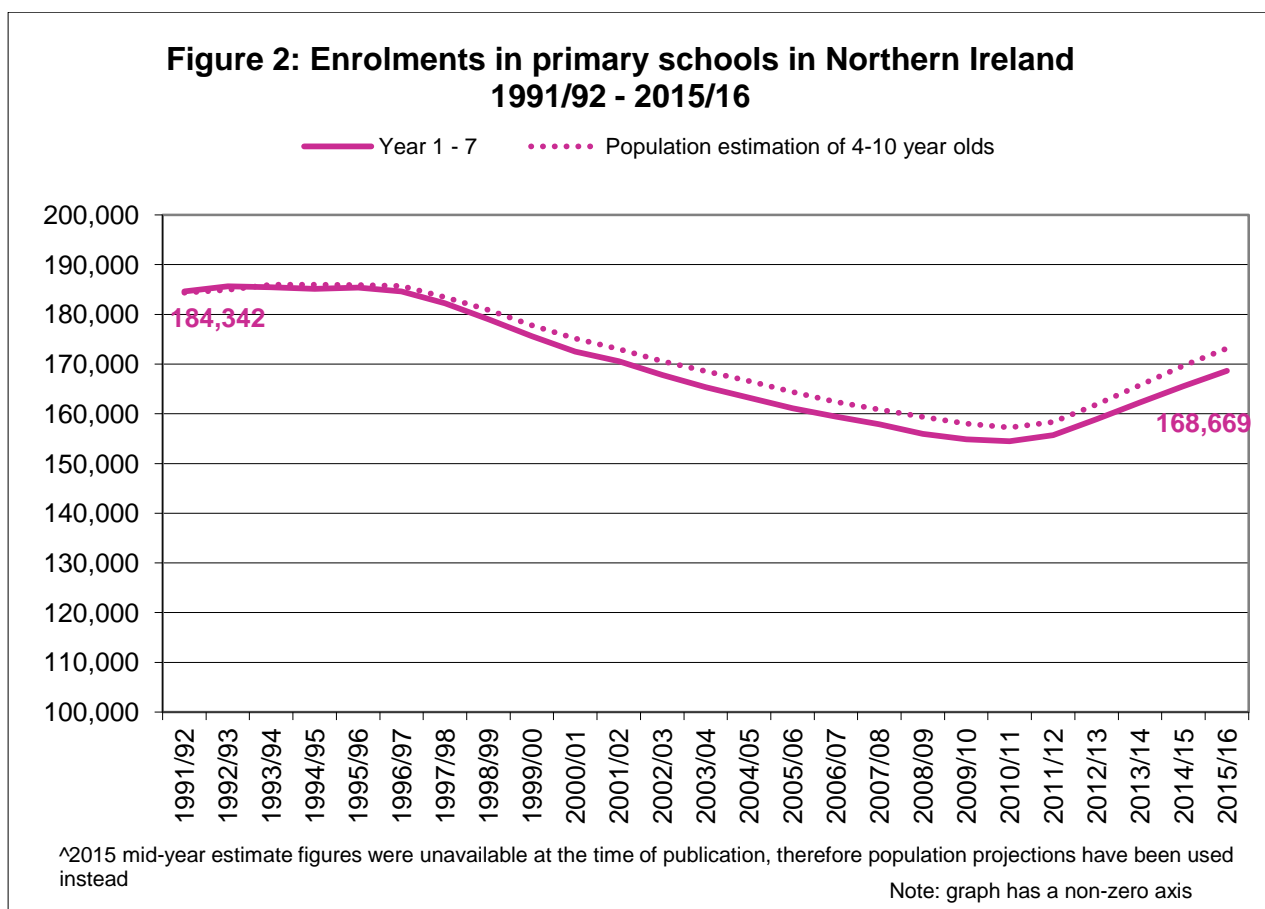
## Section 2: Primary school education

### 2.1. Number of schools

- There are 827 primary schools (including preparatory departments) in Northern Ireland. This has dropped by 36 schools in the last five years (table 1b).

### 2.2. Enrolments

- Enrolments of pupils in years 1 to 7 has risen for the fifth year in succession. In October 2015 the total number of year 1-7 pupils was 168,669 (Table 2a), its highest level since 2001/02. Enrolments have increased sharply in recent years; by more than 14,000 pupils since 2010/11 and over 3,000 compared to last year (Figure 2). The increase observed is in line with the rise in the number of 4-10 year olds in NISRA’s mid-year estimates over the last three years<sup>5</sup>.



<sup>5</sup> <http://www.nisra.gov.uk/archive/demography/population/midyear/NI-sya-6114.xls> and <http://www.nisra.gov.uk/archive/demography/population/projections/NPP14-sya.xls>

- With the increase in enrolments in primary schools and the reduction in the number of schools, the mean number of pupils per school has risen from 179 in 2010/11 to 204 in 2015/16.

### **2.3. Class size**

- The average number of pupils per class in primary schools (year 1 – year 7) was 25 (Table 4). Average class sizes differ depending on school type, from 20 in Irish medium schools and preparatory departments, to 27 in grant maintained integrated schools.

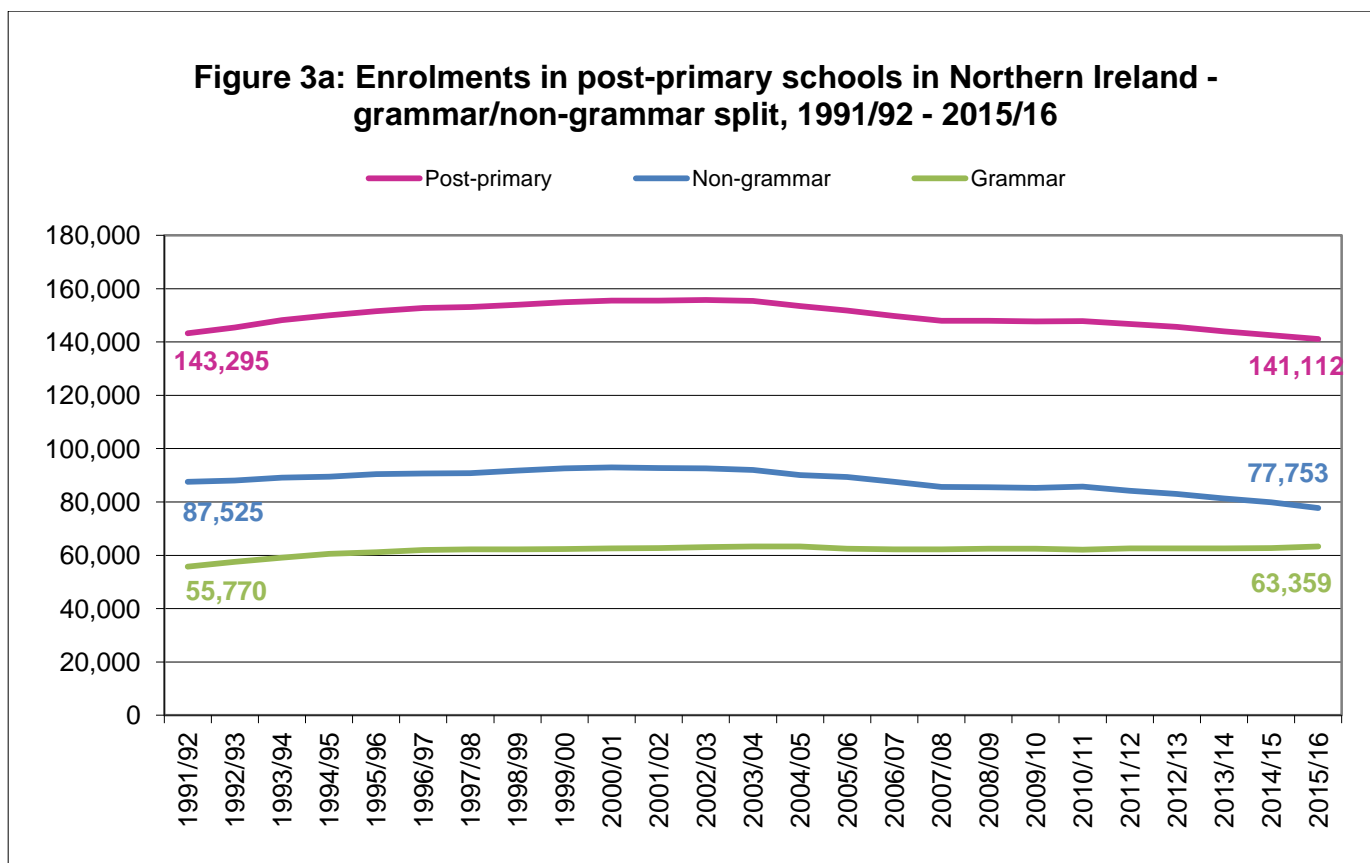
## Section 3: Post-primary school education

### 3.1. Number of schools

- The number of post-primary schools in 2015/16 is 202 (Table 1b), a decrease of six from last year and fifteen from five years ago. This is accounted for by a drop in the number of non-grammar schools.
- One-third (67) of post-primary schools are grammar schools and the remaining two-thirds (135) are non-grammars.

### 3.2. Enrolments

- Unlike primary schools, enrolments in post-primary schools continue to decline. The number of pupils in post-primary schools is 141,112 (Table 2a) – its lowest level since 1989/90. Enrolments have dropped by almost 15,000 pupils since its peak in 2002/03; and by almost 1,500 pupils since last year (Figure 3a). Again this mirrors the decrease seen in the number of 11-15 year olds in the population in the same period (Figure 3b).



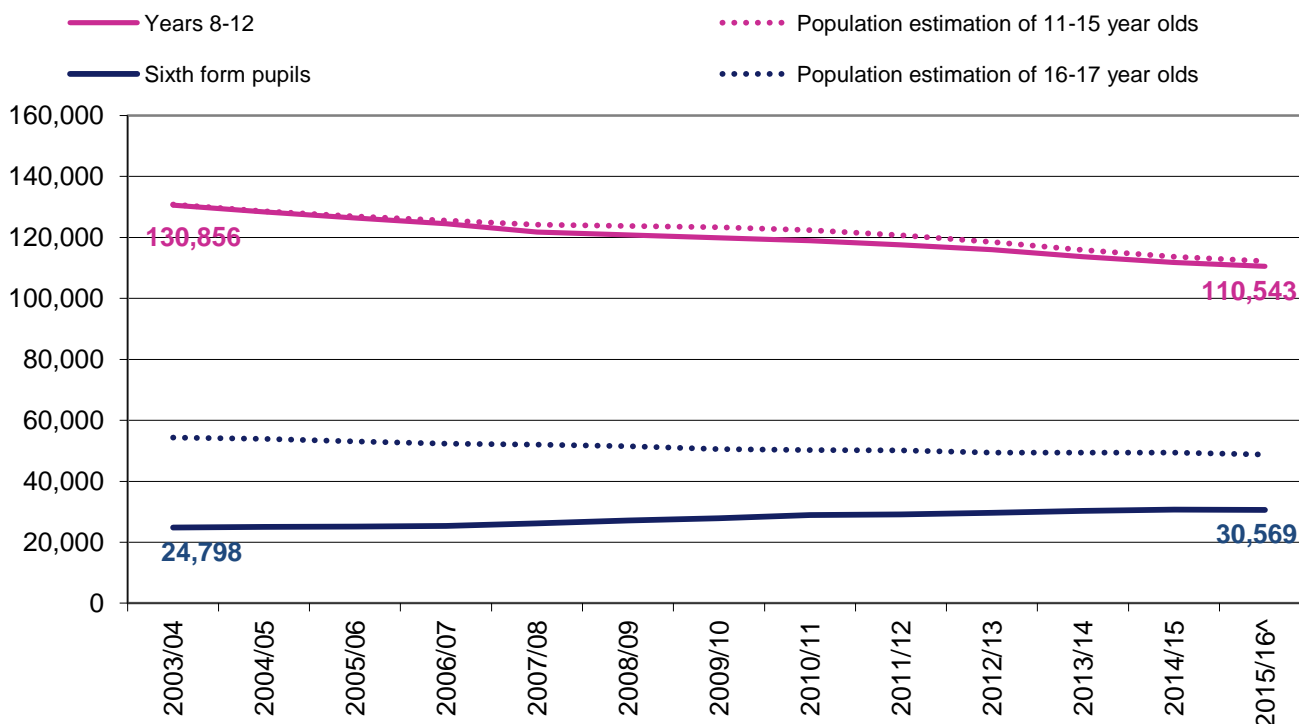


- This trend only exists in secondary (non-grammar) schools; grammar school enrolments have remained consistent in recent years (Figure 3a), and have in fact increased by almost 650 since last year. Non-grammar enrolments dropped by over 2,000 compared to last year; this may be a result of the fact that there are five fewer non-grammar schools than last year.
- Given the declining overall post-primary enrolment, a greater proportion of pupils are attending grammar schools than ever before (44.9% in 2015/16 compared to 37.2% in 1986/87).

### 3.3. Sixth form pupils

- There are over 30,500 pupils studying A Level or equivalent qualifications in schools in Northern Ireland in 2015/16. This has dropped slightly compared to last year, but has increased by almost 5,800 pupils since 2003/04.

**Figure 3b: Enrolments in post-primary schools in Northern Ireland - years 8-12/sixth form split, 2003/04 - 2015/16**



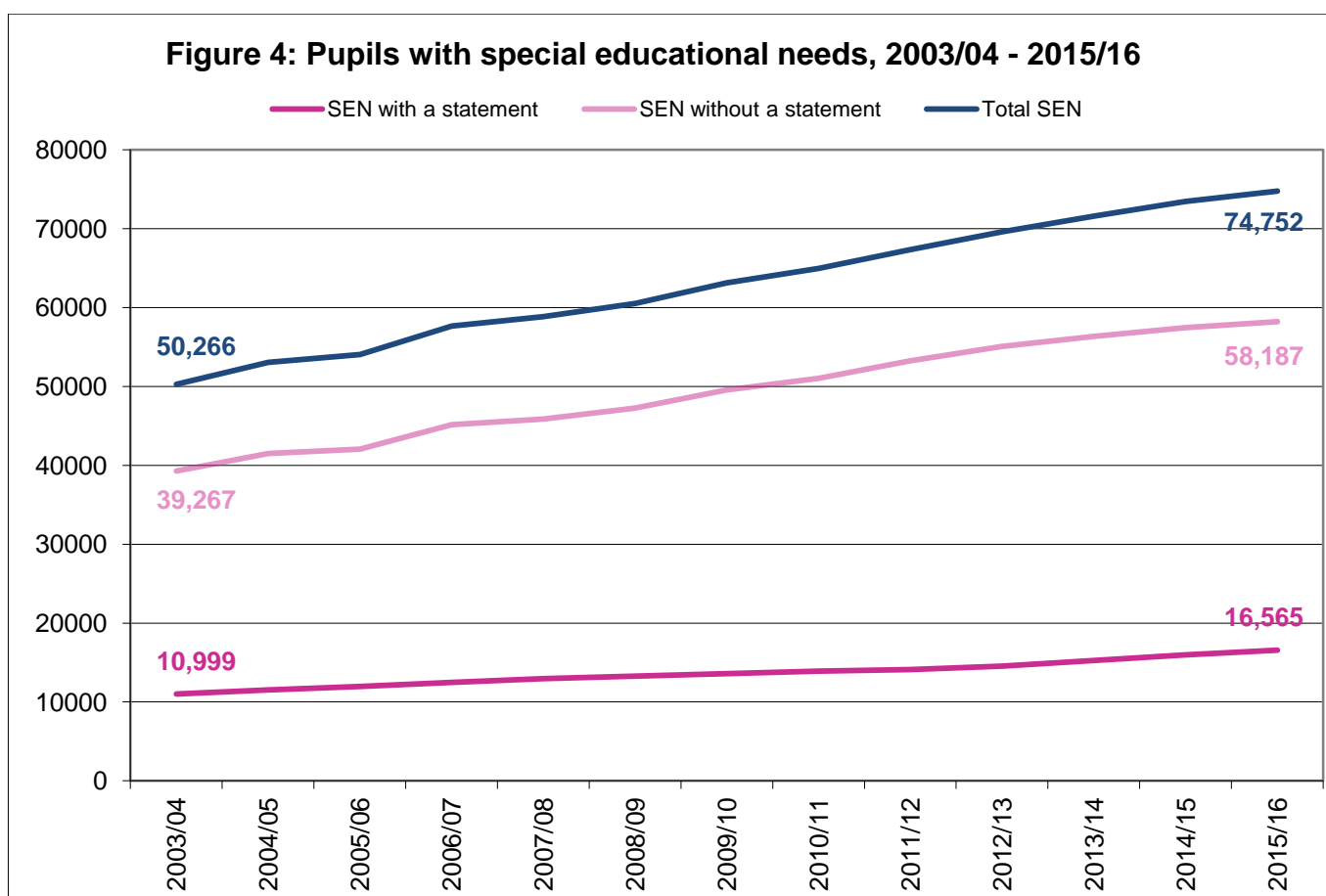
<sup>^</sup>2015 mid-year estimate figures were unavailable at the time of publication, therefore population projections have been used instead

- The number of 16 and 17 year olds in the population has remained relatively stable in the same time period, therefore a greater proportion of the population are studying A Level or equivalent qualifications in schools, rising from 46% in 2003/04 to 63% in 2015/16.

## Section 4: Special education

### 4.1. Special educational needs

- In total, approximately 74,750 pupils in schools have some form of special educational needs; this is 22.0% of the entire school population. Of this, more than 16,500, or 4.9% of pupils, have a statement of special educational needs (Table 7).
- The number of pupils with special educational needs has been steadily rising, with an additional 1,300 pupils with any needs and almost 600 additional pupils with statements compared to last year (Figure 4).



### 4.2. Special school enrolments

- Approximately 5,200 pupils are enrolled in 39 dedicated special schools (Table 1b; Table 2a). In addition to this, more than 1,700 are educated in learning support centres in primary and post-primary schools across 88 schools.

- Pupils with special educational needs are increasingly being educated in mainstream schools rather than special schools. In 2003/04, 39.6% of statemented pupils<sup>6</sup> and 9.8% of pupils with any needs attended special schools. In 2015/16 the corresponding figures have dropped to 29.9% and 7.2% respectively.

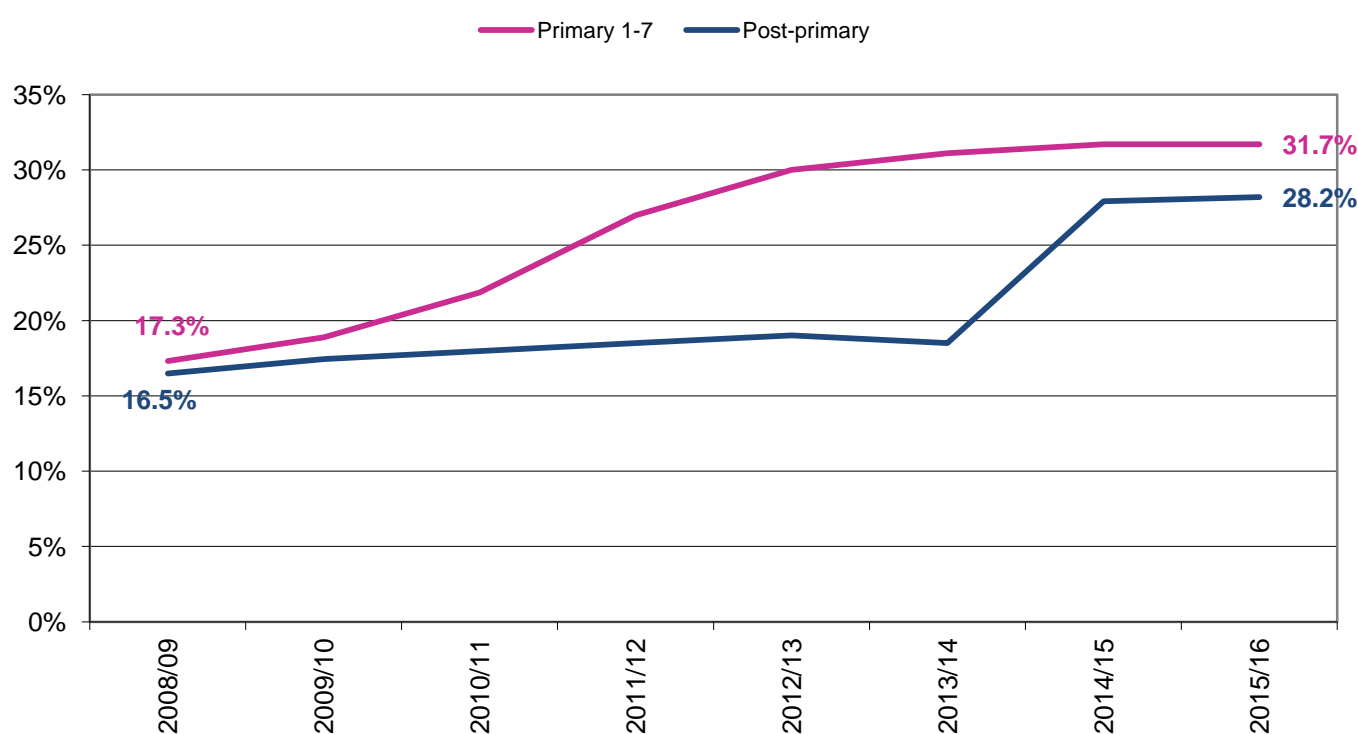
---

<sup>6</sup> Figures relate to primary (years 1-7) and post-primary pupils only

## Section 5: Free school meal entitlement<sup>7</sup>

- The overall percentage of children entitled to free school meals has risen from 29.7% last year to 30.6% this year. This equates to more than 101,000 free school meal entitled pupils in nursery, primary, post-primary and special schools (Table 3).
- The biggest increase in free school meal entitlement is seen in **post-primary** schools, rising from 26.1% last year to 28.2% this year (Figure 5). In particular, the proportion of non-grammar pupils entitled to free school meal pupils has increased from 37.1% last year to 39.9% this year. This increase is likely to relate to the extension of the Working Tax Credit free school meal criterion to post-primary pupils in September 2014<sup>8</sup>.
- By contrast, free school meal entitlement among **primary** school pupils remains static in 2015/16 at 31.7%.

**Figure 5: Percentage free school meal entitlement by school sector, 2008/09 - 2015/16**



<sup>7</sup> <https://www.deni.gov.uk/articles/school-milk-and-meals-background>

<sup>8</sup> Eligibility under the Working Tax Credit free school meal criterion was introduced on a phased basis with Nursery, Foundation Stage and Key Stage 1 pupils eligible from September 2010 and Key Stage 2 pupils eligible from September 2011. It was extended to post-primary pupils from September 2014.

## Section 6: Changes in enrolment patterns

This final section details changes in enrolment patterns in schools in recent years.

### 6.1. Diversity in schools

- Schools are increasingly becoming more ethnically diverse. There are approximately 12,500 pupils in schools in Northern Ireland recorded as “non-white”, and this represents 3.7% of the school population (Table 6a). This is an increase of 3,800 pupils and one percentage point compared to 2010/11.
- There is also a rise year-on-year in the number of pupils whose first language is not English. In 2015/16, there are more than 80 first languages spoken by pupils, with Polish and Lithuanian being the most common behind English.
- As such, there has been an increase in the number and proportion of newcomer pupils in schools in Northern Ireland (Table 6b). A newcomer pupil is one who has enrolled in a school but who does not have the satisfactory language skills to participate fully in the school curriculum. In 2015/16, there are approximately almost 13,000 newcomer pupils accounting for 3.8% of the school population. This has risen by more than 4,600 from five years prior.
- The growth in diversity in the school system may be explained by increased levels of migration among school age children over the last number of years<sup>9</sup>.

### 6.2. Irish medium education

- More than 5,500 pupils participate in Irish medium education, with 4,387 pupils educated in dedicated Irish medium schools and a further 1,155 pupils educated in Irish medium units attached to English-medium schools (Table 2b).
- The total number of pupils in Irish medium education has steadily risen over time, increasing by almost 1,300 pupils since 2010/11 and almost 300 pupils since last year. Most of this increase is coming from greater enrolments in Irish medium schools rather than units. One of the reasons for this increase is the fact that there are five more Irish medium primary schools and one more Irish medium post-primary school in this period.

---

<sup>9</sup> [http://www.nisra.gov.uk/archive/demography/population/midyear/Net\\_Mig\\_sya\\_0014.xls](http://www.nisra.gov.uk/archive/demography/population/midyear/Net_Mig_sya_0014.xls)

## Notes for readers

### ***National Statistics***

1. The United Kingdom Statistics Authority has designated these statistics as National Statistics, in accordance with the Statistics and Registration Service Act 2007 and signifying compliance with the Code of Practice for Official Statistics.

Designation can be broadly interpreted to mean that the statistics:

- meet identified user needs;
- are well explained and readily accessible;
- are produced according to sound methods, and
- are managed impartially and objectively in the public interest.

Once statistics have been designated as National Statistics it is a statutory requirement that the Code of Practice shall continue to be observed.

2. For general enquiries about National Statistics, contact the National Statistics Public Enquiry Service on 0845 601 3034  
minicom: 01633 812399

E-mail: [info@statistics.gov.uk](mailto:info@statistics.gov.uk)

Fax: 01633 652747

Letters: Customer Contact Centre, Office for National Statistics, Rm 1.101,  
Government Buildings, Cardiff Road, Newport, NP10 8XG

3. You can also find National Statistics on the Internet: <http://www.statistics.gov.uk>

### ***School Census***

4. The statistics in this release have been derived from the annual school census; details can be found at <https://www.deni.gov.uk/sites/default/files/publications/de/Census%20description%20for%20web%201516.docx>. For voluntary and private pre-school centres, and nursery schools, the census consists of a paper return comprising a number of tables; for post-primary, primary and special schools, it consists of a return comprising individual pupil records, made by Electronic Data Interchange. The tables presented in the release reflect key information on enrolments, as determined by Departmental needs and also on requests for information from other sources.

5. The figures for nursery *classes* relate to approved nursery classes in primary schools. The figures for reception refer to pupils who were below compulsory school age at 1st July 2015, who were admitted to a reception class or group in primary school following their 4<sup>th</sup> birthday. Schools may admit reception pupils throughout the year, but only those who have been admitted by 31st October are counted in the school census.
6. The figures for pre-school children in this release relate to children in funded pre-school education. Previous releases included small numbers of children in non-funded pre-school places in preparatory departments of grammar schools. While previous statistical releases have not been revised to take account of this minor change, time series and other tables available on the Education statistics section of the DE website have been revised, so that the figures are consistent in definition and relate to children in funded pre-school education.
7. Further statistics relating to school numbers and enrolments can be found on the DE website ([www.deni.gov.uk](http://www.deni.gov.uk)) under the Statistics and research section.

The DE website presents figures taken from the school census, summarised at Northern Ireland and school level. Statistics on pupil attendance, pupil: teacher ratios, school leaver destinations and qualifications may also be accessed via the website.

8. The data is produced at aggregate level only, therefore individual pupils cannot be identified. More information on confidentiality can be found in the DE Confidentiality and Access Statement at the following link:  
<https://www.deni.gov.uk/sites/default/files/publications/de/Confidentiality%20and%20Access.pdf>

### ***Data quality and coverage***

9. In some cases, percentages may not sum due to rounding.

### ***School types***

10. Definitions of school management types are as follows:
  - **Controlled:** Schools are managed and funded by the Education Authority (EA) through Boards of Governors (BoG). Primary and post-primary school BoGs consist of representatives of transferors - mainly the Protestant churches - along with representatives of parents, teachers and the EA.
  - **Voluntary:** Self-governing schools, generally of long standing, originally established to provide an academic education at post primary level on a fee paying basis. Now funded by the Department and managed by Boards of Governors. The BoGs are constituted in accordance with each school's scheme of management - usually representatives of foundation governors, parents, teachers and in most cases, DE or EA representatives. The BoGs is the employing authority and is responsible for the employment of all staff in its school.



- **Maintained** schools are managed by Boards of Governors which consist of members nominated by trustees, along with representatives of parents, teachers and the Education Authority. These schools are funded through the Education Authority for their running costs and directly by the Department in relation to capital building works. For **Catholic Maintained** schools, the Employing Authority is the Council for Catholic Maintained Schools (CCMS). **Other maintained** schools are any schools that are not Catholic maintained. They are typically, but not exclusively, **Irish medium schools**.
- **Controlled integrated:** Controlled schools which have acquired integrated status.
- **Grant Maintained integrated:** Self-governing schools with integrated education status, funded directly by the Department of Education and managed by Boards of Governors. The BoG is the employing authority and responsible for employing staff.

11. Definitions of other school types are as follows

- A **special school** is a controlled or voluntary school which is specially organised to provide education for pupils with special needs and is recognised by the DE as a special school.
- An **independent school** is a school at which full-time education is provided for pupils aged from four to 16 and is not grant aided. These schools set their own curriculum and admissions policies and are funded by fees paid by parents and income from investments. Each independent school must be registered with DE and is inspected regularly by ETI.

### **Revisions**

12. The 2015/16 figures in this statistical release are based on information as at 9 October 2015. They may be subject to minor revision and these will be notified in accordance with our revisions policy. This can be accessed at <https://www.deni.gov.uk/sites/default/files/publications/de/Statistical%20Revisions.pdf>.

Details of revisions are as follows:

- 4 March 2015: to correct the balance of part-time and full-time nursery pupils in nursery classes in primary schools (tables 2a, 2c and 3 - corrected figures in italics).

## Further enquiries

Request for further information should be addressed to:-

Paul Matthews  
Statistics and Research Team  
Department of Education  
Rathgael House  
Balloo Road  
Rathgill  
BANGOR  
Co. Down  
BT19 7PR  
Telephone (028) 9127 9717/ Fax (028) 9127 9594  
e-mail: [statistics@deni.gov.uk](mailto:statistics@deni.gov.uk)

Special analyses of the school census can be undertaken on request.

**Press enquiries should be made to the Department's Press Office at the same address, telephone (028) 9127 9207 / fax (028) 9127 9271.**

Feedback on this publication can be provided directly to Paul Matthews (contact details above) or via the website: <https://www.deni.gov.uk/contacts/statistics-and-research-team>

**Table 1a: The number of pre-school providers with funded places, by centre type and management type, 2010/11-2015/16**

		2010/11	2011/12	2012/13	2013/14	2014/15	2015/16
<b>Nursery Schools</b>	<b>Controlled</b>	65	65	65	64	64	64
	<b>Catholic Maintained</b>	33	32	32	32	32	32
	<b>TOTAL</b>	98	97	97	96	96	96
<b>Primary Schools with Funded Nursery Units</b>	<b>Controlled</b>	107	107	109	112	114	115
	<b>Catholic Maintained<sup>1</sup></b>	85	87	87	88	88	89
	<b>Other Maintained<sup>2</sup></b>	9	9	11	11	13	13
	<b>Controlled Integrated</b>	3	3	3	3	3	3
	<b>Grant Maintained Integrated</b>	14	14	14	14	14	15
	<b>TOTAL</b>	218	220	224	228	232	235
<b>Primary Schools with Funded Reception Classes</b>	<b>Controlled</b>	30	35	31	26	22	21
	<b>Catholic Maintained</b>	67	61	56	45	43	42
	<b>Other Maintained</b>	1	-	1	1	1	1
	<b>Controlled Integrated</b>	4	3	4	4	4	3
	<b>Grant Maintained Integrated</b>	-	-	-	-	-	-
	<b>TOTAL</b>	102	99	92	76	70	67
<b>Voluntary and private pre-School centres with funded places</b>	<b>Voluntary</b>	345	341	343	343	342	343
	<b>Private</b>	35	40	47	53	59	62
	<b>TOTAL</b>	380	381	390	396	401	405
<b>All Centres</b>	<b>GRAND TOTAL<sup>3</sup></b>	794	796	802	795	798	803

1 Includes one Irish medium school with a nursery class in 2015/16.

2 Excludes one Irish medium school with a nursery class in 2015/16.

3 The sum of the subtotals will not sum to the grand total as some primary schools have both nursery and reception classes

**Table 1b: The number of schools by school type and management type, 2010/11-2015/16**

		2010/11	2011/12	2012/13	2013/14	2014/15	2015/16
<b>Nursery Schools</b>	<b>Controlled</b>	65	65	65	64	64	64
	<b>Catholic Maintained</b>	33	32	32	32	32	32
	<b>TOTAL</b>	98	97	97	96	96	96
<b>Primary Schools</b>	<b>Controlled<sup>1</sup></b>	383	378	374	370	370	368
	<b>Catholic Maintained<sup>2,5</sup></b>	396	392	387	384	381	374
	<b>Other Maintained - Irish medium<sup>3</sup></b>	21	23	25	25	25	25
	<b>Other Maintained - other</b>	4	4	4	4	4	4
	<b>Controlled Integrated</b>	19	19	19	19	19	20
	<b>Grant Maintained Integrated</b>	23	23	23	23	23	23
	<b>TOTAL</b>	846	839	832	825	822	814
<b>Preparatory Departments<sup>4</sup></b>	<b>Controlled</b>	3	3	3	3	3	2
	<b>Voluntary - Schools under Other Management</b>	14	12	12	11	11	11
	<b>TOTAL</b>	17	15	15	14	14	13
<b>Secondary (Non Grammar) Schools</b>	<b>Controlled</b>	57	56	55	53	51	49
	<b>Catholic Maintained<sup>6</sup></b>	71	71	71	68	68	64
	<b>Other Maintained - Irish medium</b>	1	1	1	1	1	2
	<b>Other Maintained - other</b>	-	-	-	-	-	-
	<b>Controlled Integrated</b>	5	5	5	5	5	5
	<b>Grant Maintained Integrated</b>	15	15	15	15	15	15
	<b>TOTAL</b>	149	148	147	142	140	135
<b>Grammar Schools</b>	<b>Controlled</b>	17	17	17	17	18	17
	<b>Voluntary - Schools under Catholic Management<sup>7</sup></b>	29	29	29	29	29	29
	<b>Voluntary - Schools under Other Management</b>	22	22	22	22	21	21
	<b>TOTAL</b>	68	68	68	68	68	67
<b>Special Schools</b>	<b>TOTAL</b>	41	41	40	40	39	39
<b>Hospital Schools</b>	<b>TOTAL</b>	2	2	1	1	1	1
<b>Independent Schools</b>	<b>TOTAL</b>	15	15	15	15	14	14
<b>All schools</b>	<b>GRAND TOTAL</b>	1,219	1,210	1,200	1,187	1,180	1,166

<sup>1</sup> Includes two Irish Medium Controlled schools in 2015/16.

<sup>2</sup> Includes one Irish Medium Catholic Maintained school in 2015/16.

<sup>3</sup> Excludes two Irish Medium Controlled schools and one Irish Medium Catholic Maintained school in 2015/16.

<sup>4</sup> These are part of grammar schools.

<sup>5</sup> Includes 7 schools with Irish medium units.

<sup>6</sup> Includes 3 schools with Irish medium units in 2015/16.

<sup>7</sup> Includes 1 school with Irish medium units in 2015/16.

**Table 2a: Pupils by school type and management type, 2015/16**

	Controlled	Catholic Maintained	Other Maintained	Controlled Integrated	Grant Maintained Integrated	Voluntary		Non Grant-Aided	Voluntary pre-school centres	Private pre-school centres	Grand Total	
						Schools under Catholic Management	Schools under Other Management					
<b><u>PRE-SCHOOL EDUCATION IN OTHER CENTRES (FUNDED PLACES ONLY)</u></b>												
Playgroups	Part-time	-	-	-	-	-	-	-	7,411	388	7,799	
Day Nurseries	Part-time	-	-	-	-	-	-	-	81	836	917	
Other Provision	Part-time	-	-	-	-	-	-	-	-	-	-	
<b>TOTAL</b>		-	-	-	-	-	-	-	7,492	1,224	8,716	
<b><u>NURSERY</u></b>												
Nursery Schools	Full-time	2,382	1,629	-	-	-	-	-	-	-	4,011	
	Part-time	1,733	160	-	-	-	-	-	-	-	1,893	
Nursery Classes	Full-time	2,295	2,360	328	79	133	-	-	-	-	5,195	
	Part-time	2,158	1,514	78	-	367	-	-	-	-	4,117	
<b>TOTAL</b>		8,568	5,663	406	79	500	-	-	-	-	15,216	
<b><u>PRIMARY</u></b>												
Reception		70	154	2	15	-	-	-	-	-	241	
Primary Schools (Year 1 - Year 7)		77,322	77,022	3,039	3,810	5,719	-	-	-	-	166,912	
Prep. Departments (Year 1- Year 7)		114	-	-	-	-	-	1,643	-	-	1,757	
<b>TOTAL</b>		77,506	77,176	3,041	3,825	5,719	-	1,643	-	-	168,910	
<b><u>SECONDARY (Year 8 - Year 14)</u></b>												
Secondary (Non Grammar)		27,323	37,916	620	2,478	9,416	-	-	-	-	77,753	
Grammar		14,900	-	-	-	-	28,257	20,202	-	-	63,359	
<b>TOTAL</b>		42,223	37,916	620	2,478	9,416	28,257	20,202	-	-	141,112	
<b><u>SPECIAL</u></b>												
<b><u>HOSPITAL</u></b>		4,874	225	74	-	-	-	-	-	-	5,173	
<b><u>INDEPENDENT</u></b>		85	-	-	-	-	-	-	-	-	85	
		-	-	-	-	-	-	658	-	-	658	
<b>GRAND TOTAL</b>		133,256	120,980	4,141	6,382	15,635	28,257	21,845	658	7,492	1,224	339,870

**Table 2b: Pupils in Irish-medium education, 2010/11 - 2015/16**

	2010/11	2011/12	2012/13	2013/14	2014/15	2015/16
<b>Voluntary and private pre-schools - funded places</b>	434	473	468	467	488	481
<b>Nursery Classes in Irish-medium Schools</b>						
<b>Full-time</b>	235	258	309	312	315	354
<b>Part-time</b>	23	-	-	-	52	26
<b>Nursery Classes in Irish-medium units</b>						
<b>Full-time</b>	26	26	26	26	30	30
<b>Part-time</b>	-	-	-	-	-	-
<b>TOTAL</b>	718	757	803	805	885	891
<b><u>PRIMARY</u></b>						
<b>Primary Schools (Year 1 - Year 7)</b>						
<b>schools</b>	2,137	2,191	2,411	2,570	2,738	2,906
<b>units</b>	670	682	644	686	720	764
<b>TOTAL</b>	2,807	2,873	3,055	3,256	3,458	3,670
<b><u>POST-PRIMARY (Year 8 - Year 14)</u></b>						
<b>Post-primary Schools</b>						
<b>schools</b>	553	550	541	564	581	620
<b>units</b>	159	212	228	267	332	361
<b>TOTAL</b>	712	762	769	831	913	981
<b><u>INDEPENDENT</u></b>	11	7	6	15	-	-
<b>GRAND TOTAL</b>	4,248	4,399	4,633	4,907	5,256	5,542

**Table 2c: Pupils in Integrated education, 2010/11 - 2015/16**

	2010/11	2011/12	2012/13	2013/14	2014/15	2015/16	
<b><i>PRIMARY</i></b>							
<b>Nursery Classes</b>	<b>Full-time</b>	238	235	212	212	213	212
	<b>Part-time</b>	260	263	287	317	337	367
<b>Reception</b>	18	16	10	10	8	15	
<b>Year 1 - Year 7</b>	8,402	8,525	8,881	9,100	9,404	9,529	
<b>TOTAL</b>	8,918	9,039	9,390	9,639	9,962	10,123	
<b><i>SECONDARY (Year 8 - Year 14)</i></b>							
<b>Year 8 - Year 12</b>	10,442	10,421	10,291	10,210	10,063	9,988	
<b>Sixth form<sup>2</sup></b>	1,691	1,710	1,822	1,896	1,931	1,906	
<b>TOTAL</b>	12,133	12,131	12,113	12,106	11,994	11,894	
<b>GRAND TOTAL</b>	21,051	21,170	21,503	21,745	21,956	22,017	

Note:

1. Figures include children attending Controlled Integrated schools and Grant Maintained Integrated Schools.
2. These figures differ from previous years' bulletins as they are based solely on pupils studying A Level or equivalent qualifications. In previous years, pupils that were repeating GCSEs but were the age of a sixth form pupil were included.

**Table 3: Pupils entitled to Free School Meals<sup>1</sup> by school type and management type, 2015/16**

*Numbers and percentages<sup>2</sup>*

		Number	Enrolment	Percentage
Voluntary and Private Pre-School Centres (funded places only)	Voluntary	921	7,492	12.3
	Private	53	1,224	4.3
	<b>TOTAL</b>	974	8,716	11.2
Nursery Schools Full-time	Controlled	1,100	2,382	46.2
	Catholic Maintained	919	1,629	56.4
	<b>TOTAL</b>	2,019	4,011	50.3
Nursery Schools Part-time	Controlled	200	1,733	11.5
	Catholic Maintained	21	160	13.1
	<b>TOTAL</b>	221	1,893	11.7
Nursery Classes Full-time	Controlled	972	2,295	42.4
	Catholic Maintained	1,057	2,360	44.8
	Other Maintained	146	328	44.5
	Controlled Integrated	41	79	51.9
	Grant Maintained Integrated	56	133	42.1
	<b>TOTAL</b>	2,272	5,195	43.7
Nursery Classes Part-time	Controlled	246	2,158	11.4
	Catholic Maintained	192	1,514	12.7
	Other Maintained	10	78	12.8
	Grant Maintained Integrated	43	367	11.7
	<b>TOTAL</b>	491	4,117	11.9
Reception pupils <sup>3</sup>	<b>TOTAL</b>	34	241	14.1
<b>TOTAL PRE-SCHOOL</b>		6,011	24,173	24.9
Primary Schools (Year 1-Year 7)	Controlled	22,543	77,322	29.2
	Catholic Maintained	26,667	77,022	34.6
	Other Maintained - Irish Medium	1,234	2,653	46.5
	Other Maintained - Other	67	386	17.4
	Controlled Integrated	1,348	3,810	35.4
	Grant Maintained Integrated	1,583	5,719	27.7
	<b>TOTAL</b>	53,442	166,912	32.0
Prep. Departments	Controlled	*	114	*
	Voluntary	#	1,643	#
	<b>TOTAL</b>	26	1,757	1.5
<b>ALL PRIMARY AND PREP YEAR 1 - 7 PUPILS</b>		53,468	168,669	31.7
Secondary (Non Grammar) Schools	Controlled	9,493	27,323	34.7
	Catholic Maintained	16,702	37,916	44.1
	Other Maintained - Irish Medium	400	620	64.5
	Controlled Integrated	928	2,478	37.4
	Grant Maintained Integrated	3,467	9,416	36.8
	<b>TOTAL</b>	30,990	77,753	39.9
Grammar Schools	Controlled	1,760	14,900	11.8
	Voluntary - Schools under Catholic Management	5,210	28,257	18.4
	Voluntary - Schools under Other Management	1,841	20,202	9.1
	<b>TOTAL</b>	8,811	63,359	13.9
<b>ALL POST-PRIMARY SCHOOLS</b>		39,801	141,112	28.2
<b>ALL PRIMARY AND POST-PRIMARY SCHOOLS</b>		93,269	309,781	30.1
<b>ALL SPECIAL SCHOOLS</b>		2,757	5,173	53.3
<b>ALL NURSERY, PRIMARY, POST-PRIMARY SCHOOLS AND SPECIAL SCHOOLS<sup>4</sup></b>		101,063	330,411	30.6

\* Fewer than 5 cases.

# Number suppressed.

<sup>1</sup> Income Support and income-based Jobseeker's Allowance are two of the benefits which determine eligibility for free school meals. As school meals are not universally available to children in pre-school education, parental receipt of these benefits is a better indicator of social disadvantage for the pre-school sector. Pupils who are recorded as entitled to free school meals in nursery classes in primary schools are also included in the totals.

<sup>2</sup> Percentages express the number of children in funded places whose parents were in receipt of Income Support or income-based Jobseeker's Allowance at the time of first application for admission, as a proportion of all children in funded places. Thus, for example, 46.2% of children in full-time places in controlled nursery schools had parents in receipt of these benefits.

<sup>3</sup> Due to the small numbers when analysing reception by management type, only the total has been provided.

<sup>4</sup> Overall total excludes voluntary and private pre-school centres



**Table 4: Average class size<sup>1,2</sup> by school type and management type, 2015/16**

		Average number of pupils per class
<b>Nursery Schools</b>	<b>Controlled</b>	26
	<b>Catholic Maintained</b>	26
	<b>TOTAL</b>	26
<b>Nursery Classes</b>	<b>Controlled</b>	26
	<b>Catholic Maintained<sup>3</sup></b>	27
	<b>Other Maintained</b>	26
	<b>Irish Medium</b>	27
	<b>Other</b>	26
	<b>TOTAL</b>	26
<b>Primary Schools (Year 1 - Year 7)<sup>4,5</sup></b>	<b>Controlled<sup>6</sup></b>	25
	<b>Catholic Maintained<sup>7</sup></b>	24
	<b>Other Maintained</b>	20
	<b>Irish Medium<sup>8</sup></b>	21
	<b>Other</b>	25
	<b>TOTAL</b>	25
<b>Preparatory Departments (Year 1 - Year 7)<sup>4</sup></b>	<b>Controlled</b>	14
	<b>Voluntary</b>	-
	<b>Schools under Catholic Management</b>	20
	<b>Schools under Other Management</b>	20
<b>TOTAL</b>	20	

<sup>1</sup>. Class size data is only collected in respect of nursery and primary schools and prep. departments.

<sup>2</sup>. Children in learning support centres are excluded.

<sup>3</sup>. Includes one Irish medium school.

<sup>4</sup>. Any reception pupils integrated into primary classes are excluded.

<sup>5</sup> Any primary school classes that are solely reception have been excluded

<sup>6</sup>. Includes two Irish medium schools.

<sup>7</sup>. Includes one Irish medium school.

**Table 5: Religion of pupils by school type and management type, 2015/16**  
**Nursery, Primary, Post Primary and Special Schools**

		Protestant	Catholic	Other Christian	Non Christian	No Religion / Not recorded	Total
Voluntary and Private Pre-School Centres (funded children only)	Voluntary	1,964	3,496	114	32	1,886	7,492
	Private	374	285	17	6	542	1,224
	<b>TOTAL</b>	<b>2,338</b>	<b>3,781</b>	<b>131</b>	<b>38</b>	<b>2,428</b>	<b>8,716</b>
Nursery Schools	Controlled	1,997	1,045	174	33	866	4,115
	Catholic Maintained	30	1,380	126	14	239	1,789
	<b>TOTAL</b>	<b>2,027</b>	<b>2,425</b>	<b>300</b>	<b>47</b>	<b>1,105</b>	<b>5,904</b>
Nursery Classes & Reception	Controlled	2,482	563	259	50	1,169	4,523
	Catholic Maintained	50	3,766	31	51	130	4,028
	Other Maintained	41	310	*	-	#	408
	Controlled Integrated	41	33	#	*	14	94
	Grant Maintained Integrated	162	193	34	#	#	500
	<b>TOTAL</b>	<b>2,776</b>	<b>4,865</b>	<b>333</b>	<b>110</b>	<b>1,469</b>	<b>9,553</b>
Primary Schools (Year 1 - Year 7)	Controlled	51,765	5,401	4,430	777	14,949	77,322
	Catholic Maintained	600	74,175	465	519	1,263	77,022
	Other Maintained	286	2,508	42	*	#	3,039
	Controlled Integrated	1,547	1,143	200	#	#	3,810
	Grant Maintained Integrated	1,768	2,449	421	73	1,008	5,719
	<b>TOTAL</b>	<b>55,966</b>	<b>85,676</b>	<b>5,558</b>	<b>1,425</b>	<b>18,287</b>	<b>166,912</b>
Prep. Departments (Year 1 - Year 7)	Controlled	71	*	8	-	#	114
	Voluntary	766	#	226	38	#	1,643
	<b>TOTAL</b>	<b>837</b>	<b>210</b>	<b>234</b>	<b>38</b>	<b>438</b>	<b>1,757</b>
Secondary (Non Grammar) Schools	Controlled	22,055	925	1,133	161	3,049	27,323
	Catholic Maintained	478	36,652	221	140	425	37,916
	Other Maintained	-	580	*	-	#	620
	Controlled Integrated	1,603	380	#	27	#	2,478
	Grant Maintained Integrated	3,914	3,801	488	105	1,108	9,416
<b>TOTAL</b>	<b>28,050</b>	<b>42,338</b>	<b>1,935</b>	<b>433</b>	<b>4,997</b>	<b>77,753</b>	
Grammar Schools (Year 8 - Year 14)	Controlled	11,043	1,339	802	90	1,626	14,900
	Voluntary - Schools under Catholic Management	273	27,446	153	96	289	28,257
	Voluntary - Schools under Other Management	13,062	2,507	1,400	263	2,970	20,202
	<b>TOTAL</b>	<b>24,378</b>	<b>31,292</b>	<b>2,355</b>	<b>449</b>	<b>4,885</b>	<b>63,359</b>
Special Schools	Controlled	1,876	2,027	#	#	799	4,874
	Catholic Maintained	*	214	*	-	#	225
	Other Maintained	#	27	*	*	#	74
	<b>TOTAL</b>	<b>1,910</b>	<b>2,268</b>	<b>142</b>	<b>33</b>	<b>820</b>	<b>5,173</b>
<b>ALL FUNDED PRE-SCHOOL, NURSERY, PRIMARY, POST-PRIMARY AND SPECIAL SCHOOLS</b>		<b>118,282</b>	<b>172,855</b>	<b>10,988</b>	<b>2,573</b>	<b>34,429</b>	<b>339,127</b>

\* Fewer than 5 cases.

# Number suppressed.

**Table 6a: Ethnicity of pupils by school type, 2015/16**  
**Funded pre-school education, Primary, Post Primary and Special Schools**

	White (excluding Irish Traveller)	Chinese	Irish Traveller	Indian/Sri Lankan	Pakistani	Black	Other ethnic group	Mixed ethnic group	Total
<b>Voluntary and Private Pre-School Centres (funded children only)</b>	8,314	60	14	35	*	36	#	117	8,716
<b>Nursery Schools</b>	5,667	31	10	25	#	15	#	101	5,904
<b>Nursery Classes &amp; Reception</b>	9,147	54	30	73	5	52	73	119	9,553
<b>Primary Schools &amp; Prep. Departments (Year 1 - Year 7)</b>	161,785	590	645	898	159	758	1,649	2,185	168,669
<b>Secondary (Non Grammar) Schools</b>	75,466	141	245	122	59	428	677	615	77,753
<b>Grammar Schools (Year 8 - Year 14)</b>	61,318	412	13	364	71	118	443	620	63,359
<b>Special Schools</b>	4,956	19	45	19	5	13	55	61	5,173
<b>ALL FUNDED PRE-SCHOOL, NURSERY, PRIMARY, POST-PRIMARY AND SPECIAL SCHOOLS</b>	326,653	1,307	1,002	1,536	309	1,420	3,082	3,818	339,127

\* Fewer than 5 cases.

# Number suppressed.

**Table 6b: Newcomer pupils by school type, 2010/11 - 2015/16**  
**Nursery, Primary, Post Primary and Special Schools**

	2010/11		2011/12		2012/13		2013/14		2014/15		2015/16	
	n	%	n	%	n	%	n	%	n	%	n	%
<b>Voluntary and Private Pre-School Centres (funded children only)</b>	173	2.3%	256	3.1%	330	3.9%	341	4.1%	335	3.9%	364	4.2%
<b>Nursery Schools</b>	191	3.2%	242	4.1%	327	5.5%	330	5.6%	323	5.5%	382	6.5%
<b>Nursery Classes &amp; Reception</b>	373	4.2%	483	5.3%	512	5.6%	570	6.1%	598	6.3%	654	6.8%
<b>Primary Schools &amp; Prep. Departments (Year 1 - Year 7)</b>	5,019	3.2%	5,149	3.3%	5,969	3.8%	6,854	4.2%	8,080	4.9%	8,853	5.2%
<b>Secondary (Non Grammar) Schools</b>	2,114	2.5%	2,218	2.6%	2,244	2.7%	2,288	2.8%	2,219	2.8%	2,279	2.9%
<b>Grammar Schools (Year 8 - Year 14)</b>	336	0.5%	264	0.4%	274	0.4%	213	0.3%	232	0.4%	271	0.4%
<b>Special Schools</b>	60	1.3%	62	1.4%	91	2.0%	101	2.1%	113	2.2%	129	2.5%
<b>ALL FUNDED PRE-SCHOOL, NURSERY, PRIMARY, POST-PRIMARY AND SPECIAL SCHOOLS</b>	8,266	2.5%	8,674	2.6%	9,747	2.9%	10,697	3.2%	11,900	3.5%	12,932	3.8%

1.A newcomer pupil is one who has enrolled in a school but who does not have the satisfactory language skills to participate fully in the school curriculum, and the wider environment, and does not have a language in common with the teacher, whether that is English or Irish. This has previously been referred to as English an Additional Language. It does not refer to indigenous pupils who choose to attend an Irish medium school.

**Table 7: Percentage of children with Special Education Needs<sup>1</sup> at schools and funded pre-school education centres in 2015/16**

	STAGE 1 - Statemented	4	TOTAL ENROLMENT	% Statemented children	% SEN children (non- statemented)	% SEN children (stage 1 - 5)	
<b>VOLUNTARY and PRIVATE PRE-SCHOOL EDUCATION CENTRES<sup>2</sup></b>	34	901	8,716	0.4%	10.3%	10.7%	
<b>NURSERY SCHOOLS</b>							
<b>Total nursery school pupils</b>	71	1,499	5,904	1.2%	25.4%	26.6%	
<b>PRIMARY SCHOOLS and PREPARATORY DEPARTMENTS</b>							
<b>Total nursery class pupils</b>	#	#	9,312	#	#	4.0%	
<b>Total reception pupils</b>	*	*	241	*	*	2.1%	
Primary schools (year 1 - 7)	5,331	30,867	166,912	3.2%	18.5%	21.7%	
Grammar school Preparatory Depts.(year 1 - 7)	31	288	1,757	1.8%	16.4%	18.2%	
<b>Total year 1 - 7 pupils</b>	5,362	31,155	168,669	3.2%	18.5%	21.7%	
<b>Total primary pupils</b>	5,444	31,453	178,222	3.1%	17.6%	20.7%	
<b>POST PRIMARY SCHOOLS</b>							
Secondary (non grammar) schools	5,167	18,864	77,753	6.6%	24.3%	30.9%	
Grammar Schools	945	5,201	63,359	1.5%	8.2%	9.7%	
<b>Total post primary pupils</b>	6,112	24,065	141,112	4.3%	17.1%	21.4%	
<b>SPECIAL SCHOOLS</b>	<b>Total</b>	4,904	269	5,173	94.8%	5.2%	100.0%
<b>HOSPITAL SCHOOLS<sup>3</sup></b>	<b>Total</b>	N/A	N/A	N/A	N/A	N/A	
<b>INDEPENDENT SCHOOLS<sup>4</sup></b>	<b>Total</b>	N/A	N/A	N/A	N/A	N/A	
<b>ALL SCHOOLS<sup>5</sup></b>	<b>Total</b>	16,531	57,286	330,411	5.0%	17.3%	22.3%
<b>ALL SCHOOLS AND PRE-SCHOOL EDUCATION CENTRES<sup>5</sup></b>		16,565	58,187	339,127	4.9%	17.2%	22.0%

1. Children with Special Education Needs are assessed under the 5 stages of the SEN Code of Practice.

2. Voluntary and private centres funded under the Pre-school Education Expansion Programme.

3. Special needs data is not collected in respect of Hospital schools.

4. Special needs data is not collected in respect of Independent schools.

5. Excluding Hospital and Independent schools.