

# COVID-19 BOOSTER VACCINATION PROGRAMME

VERSION: 15 November 2021

## Overall planning assumptions:

- Groups 1-10 eligible for booster 6 months after 2<sup>nd</sup> dose 40 years +
- mRNA used as booster – Single Pfizer or Moderna, AZ only where needed
- Co-delivered with flu programme where possible, and co-promotion if not

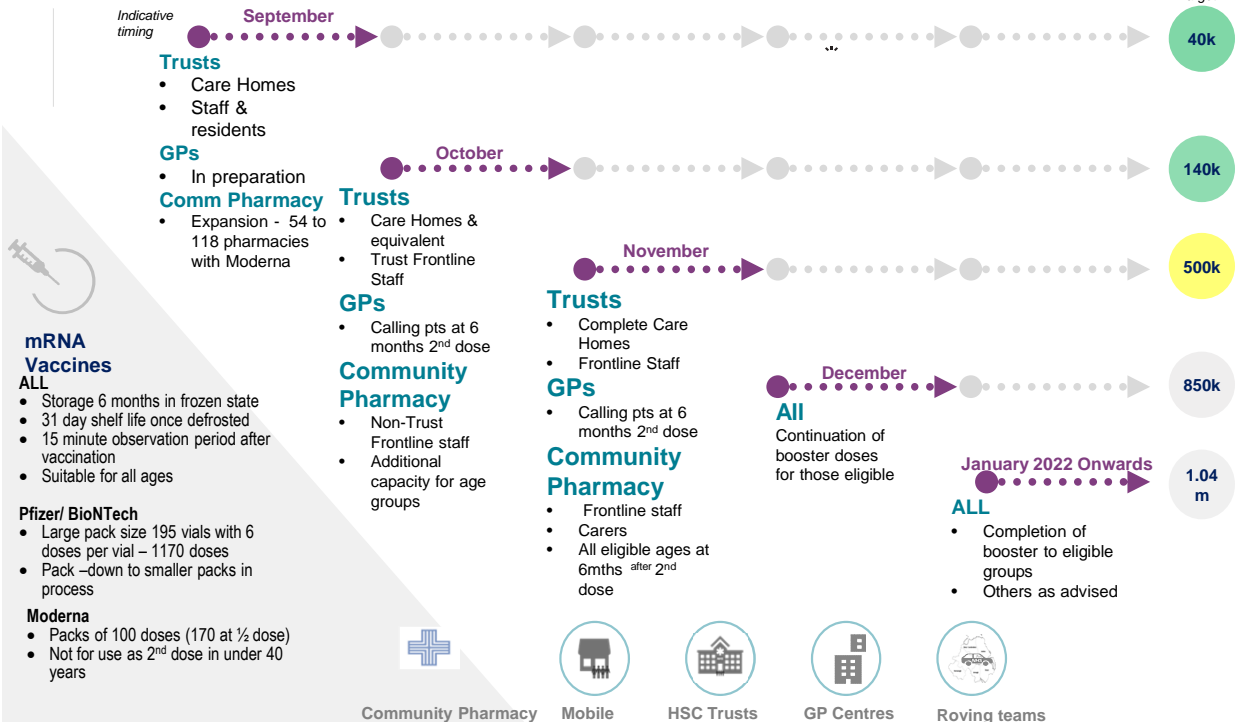


## Programme

	HSC Trusts	GPs	Community Pharmacy	All	
1.	Care homes (13k residents and 20K staff) & equivalent Trust inpatients	4. All over 50 year olds (625k)	6. Non-Trust frontline staff (30k)	JCV1 Groups 1 to 10	Programme 2022
2.	Trust frontline staff (approx 50k)	5. All 'at risk' (formerly CEV/CV) 16-49 year olds (95k)	7. Carers (40-65k)		
3.	40-49 year olds (207k)		8. Other eligible age groups		



## Booster Vaccination Programme



## Delivery Models

### Trust Mobile teams – using Pfizer vaccine

- Residents & staff of care homes
- Offer 1<sup>st</sup> dose for unvaccinated staff

### GP Practices

- 321 Practices for priority groups 2-9
- All practices to have access to Pfizer
- Moderna or packed down Pfizer used for smaller practices
- Pack down of larger packs where possible
- Commenced October 2021

### Roving – Pfizer & AZ

- Target - Housebound individuals

### Trust

- Hubs for staff vaccination (from September)
- Centres for public access (from December)

### Community Pharmacy

- 242 community pharmacies using Moderna vaccine increasing to wider coverage
- Booster for Non-Trust frontline staff
- Care homes staff flu vaccination on site where possible and in CP where not
- Carers & foster carers
- All others on basis of age at least 6 months post 2<sup>nd</sup> dose (not 'at-risk' 16-49 year olds)
- Evergreen Programme for anyone unvaccinated – using Moderna for over 40s )
- Evergreen offer commenced October and Booster commenced November