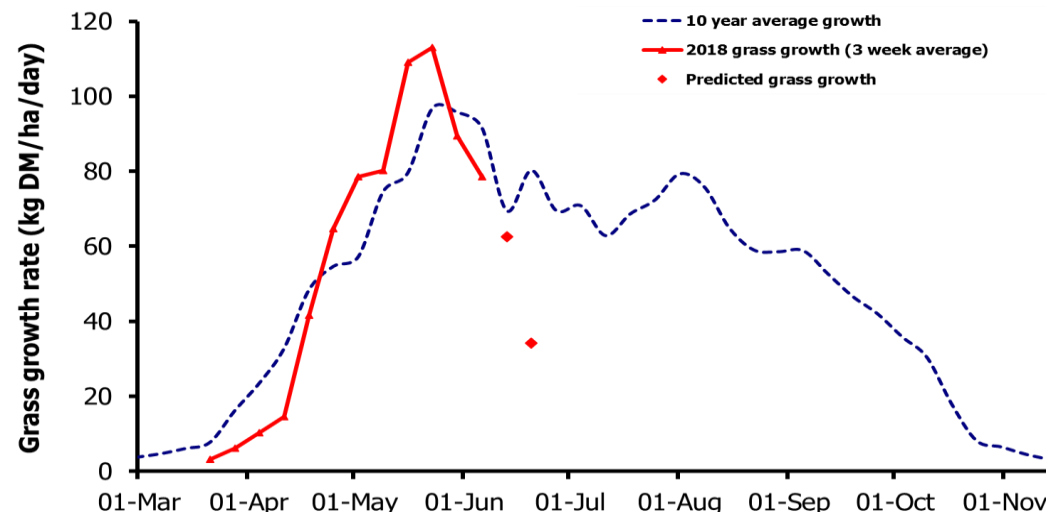
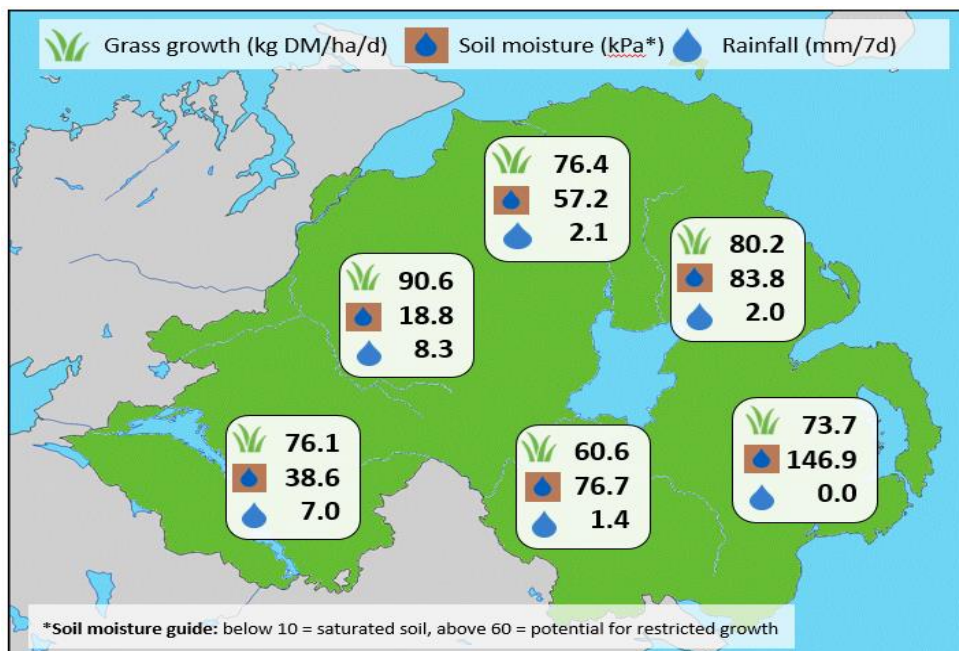


Week Beginning 11 June 2018



MANAGEMENT NOTES:

- Growth has fallen in the past week in line with predictions and due to the dry conditions experienced particularly in the eastern counties of N.I.
- Predictions this week show a dramatic fall in grass growth based on weather forecasts and current dry soil conditions at AFBI Hillsborough. These extremes haven't been witnessed since June 2008 and it is likely that these predictions will be localised to areas which continue to receive little rainfall.
- However, a large range in growth rates is currently evident across GrassCheck farms (24 – 137kg DM/ha/day). Wetter farms or those which have received localised heavy rainfall recently are expected to maintain current growth rates.
- Grass quality remains low across much of the province due to the stress on the plant from dry weather. Testing grass and reviewing current supplementation rates for stock to meet animal requirements for target performance.

Weekly Grass Growth (kg DM/ha/day)		Grass Quality	
		Plots	On-farm
GrassCheck plots	78.2	DM (%)	21.8
Dairy farms*	88.5	ME (MJ/kg DM)	11.1
Beef & sheep farms*	71.5	CP (% DM)	16.0
Forecast	7 day	62.5	WSC (% DM)
	14 day	34.2	15.7
			10.6

*On-farm grass growth data supplied by AgriNet

GrassCheck plots receive 270 kgN/ha/year

