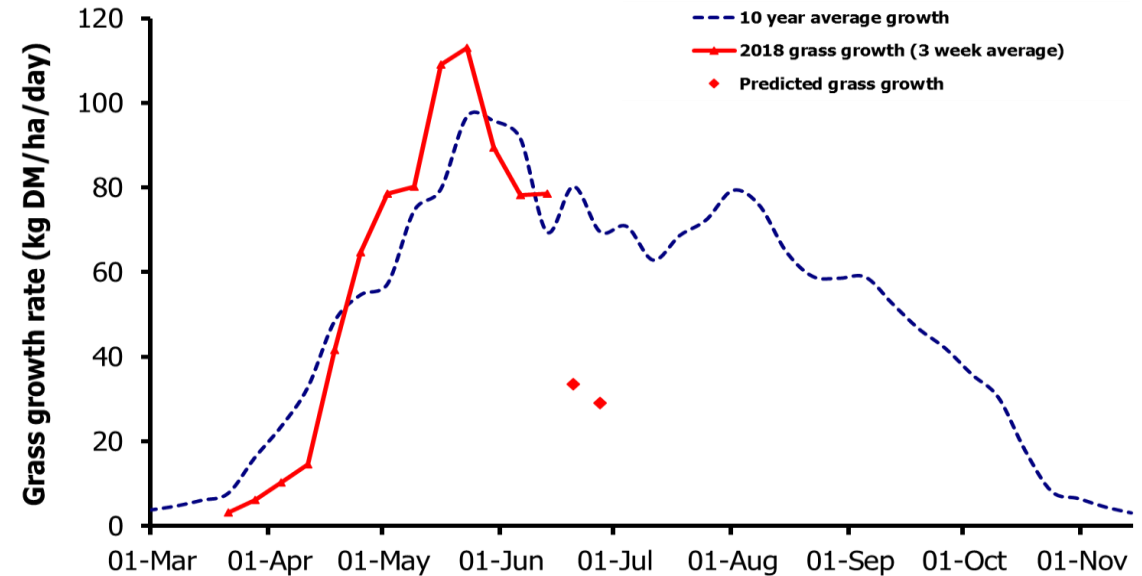


## Week Beginning 18 June 2018



### MANAGEMENT NOTES:

- Again this week there is huge variation in grass growth between farms due to large differences in soil moisture.
- On some farms grass growth is as low as 28 kg DM/ha/day. Where grass is in short supply, aim to lengthen the grazing rotation by bringing in silage ground and / or supplementary feeding.
- Measuring grass growth will be essential to enable grass budgeting for the farm for the next few weeks.
- For dry farms growth rate predictions remain low for the next week.
- Wetter farms or those which have received localised rainfall recently are expected achieve growth rates >50 kg DM/ha/day.

| Weekly Grass Growth (kg DM/ha/day) |        | Grass Quality |            |
|------------------------------------|--------|---------------|------------|
|                                    |        | Plots         | On-farm    |
| GrassCheck plots                   | 78.5   | DM (%)        | 23.3       |
| Dairy farms*                       | 72.3   | ME (MJ/kg DM) | 11.5       |
| Beef & sheep farms*                | 46.6   | CP (% DM)     | 15.5       |
| Forecast                           | 7 day  | 33.6          | WSC (% DM) |
|                                    | 14 day | 29.1          | 16.6       |
|                                    |        |               | 13.0       |

\*On-farm grass growth data supplied by AgriNet

# GrassCheck plots receive 270 kgN/ha/year

