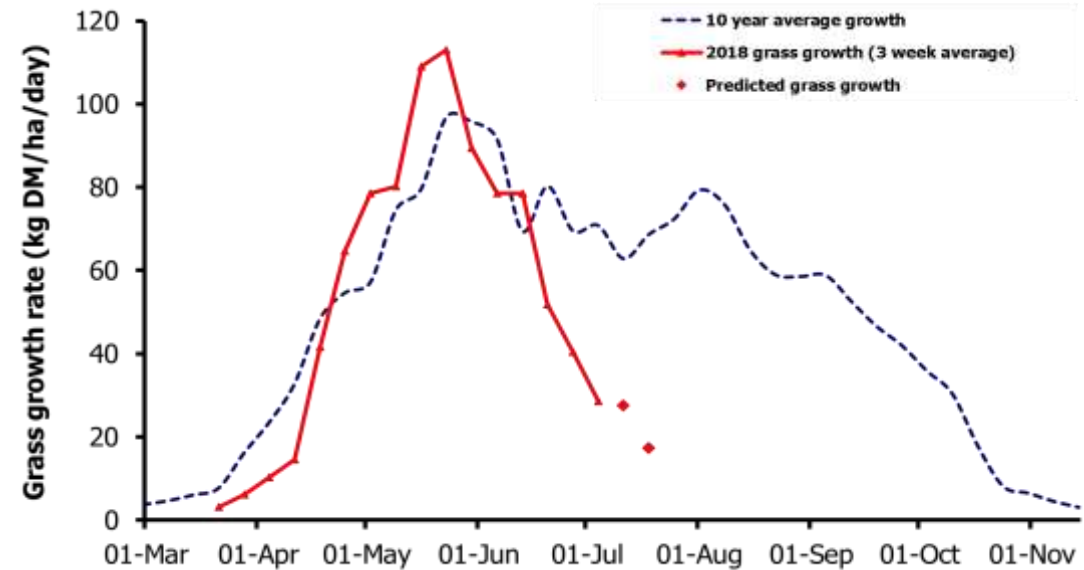
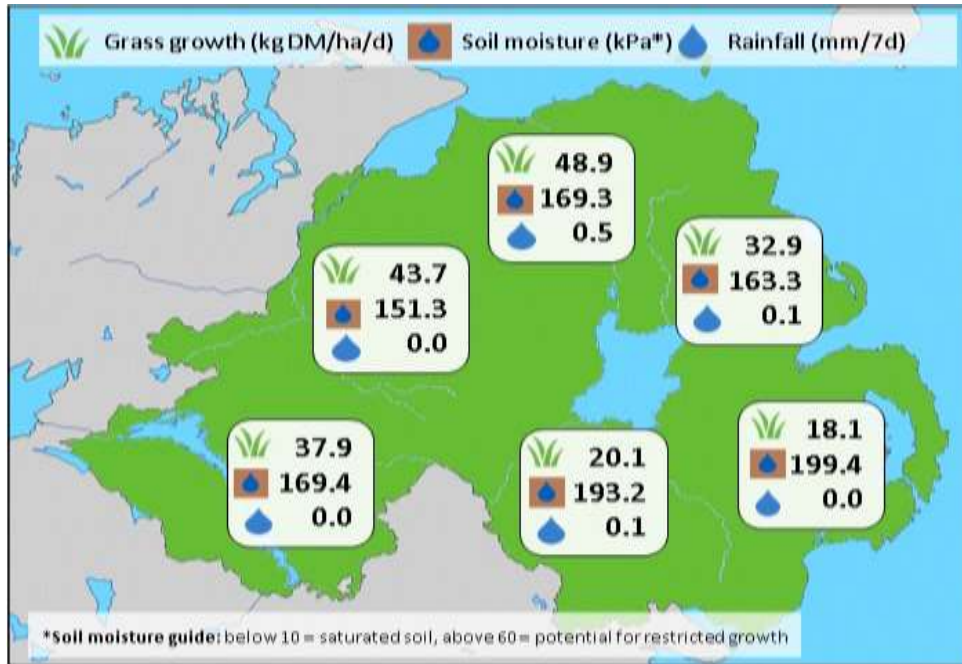


## Week Beginning 9 July 2018



### MANAGEMENT NOTES:

- Very dry conditions continue this week with soil temperatures reaching 20°C and soil moisture levels at a record low. The fall in growth rates has reduced summer growth to date by 28% (0.6t DM/ha).
- Growth rate predictions remain low for the next few weeks. However, this is the first time the GrassCheck model has experienced these extreme conditions, making it difficult for long term forecasts. Nonetheless dry conditions are set to continue so forage budgeting will be key in all areas of the province.
- Where forage is in very short supply removing surplus stock may be necessary. For lactating animals consider drying off or weaning early and supplementing youngstock with concentrate to maintain performance.

Weekly Grass Growth (kg DM/ha/day)		Grass Quality	
		Plots	On-farm
GrassCheck plots	26.8	DM (%)	26.7
Dairy farms*	33.4	ME (MJ/kg DM)	11.4
Beef & sheep farms*	31.0	CP (% DM)	16.2
Forecast	7 day	27.6	WSC (% DM)
	14 day	17.4	15.6
			14.5

\*On-farm grass growth data supplied by AgriNet

# GrassCheck plots receive 270 kgN/ha/year

