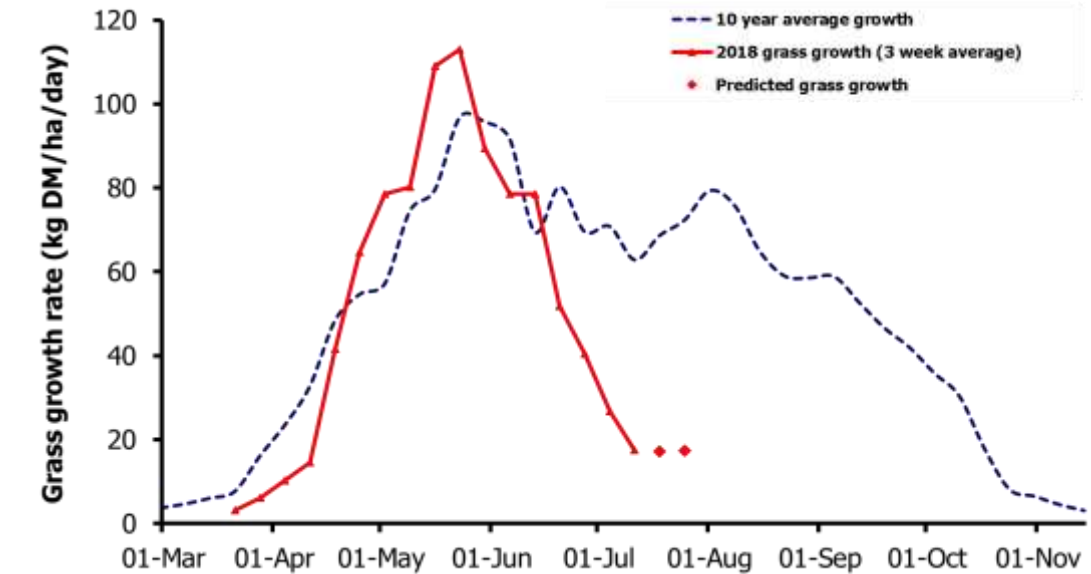
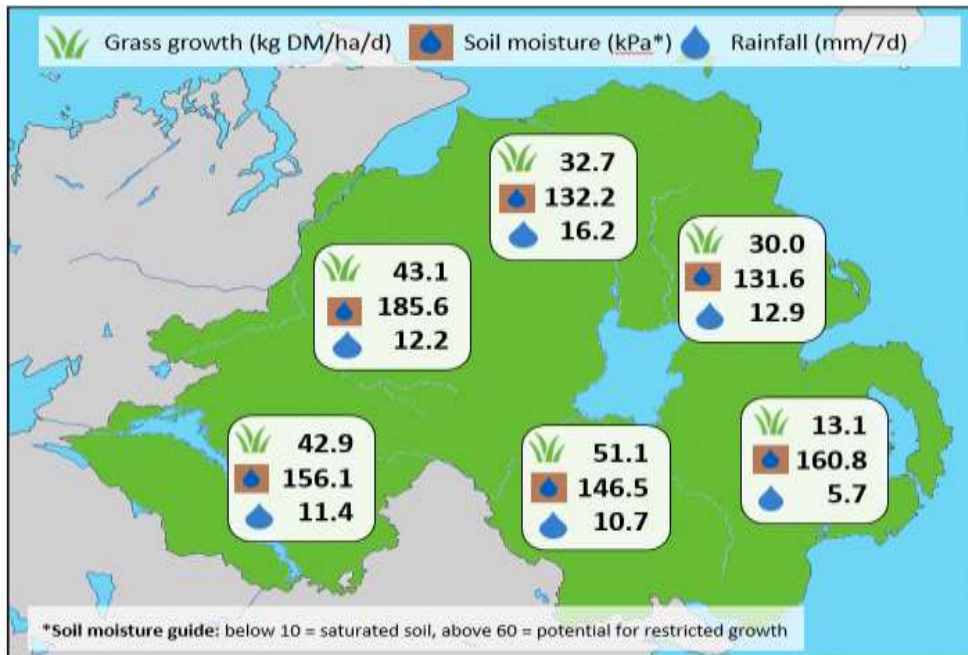


Week Beginning 16 July 2018



MANAGEMENT NOTES:

- This week again sees significant variation in growth rates across the province. Growth rates average 43kg DM/ha in the west, considerably below the long-term average but these are likely to be boosted by Sunday's rain.
- However, little or no growth is being recorded on farms in counties Down and south Antrim and with little rain expected, growth rates are forecast to remain low for the coming weeks in these counties.
- Revise winter feed budgets now to allow time to source alternative forage options for the winter months.
- Where reseeds have been sown but haven't yet germinated, seeds should still be viable and should germinate when sufficient moisture is present.

Weekly Grass Growth (kg DM/ha/day)		Grass Quality	
		Plots	On-farm
GrassCheck plots	17.5	DM (%)	23.3
Dairy farms*	34.0	ME (MJ/kg DM)	11.2
Beef & sheep farms*	27.1	CP (% DM)	18.7
Forecast	7 day	17.2	WSC (% DM)
	14 day	17.3	12.0
			18.7

*On-farm grass growth data supplied by AgriNet

GrassCheck plots receive 270 kgN/ha/year

