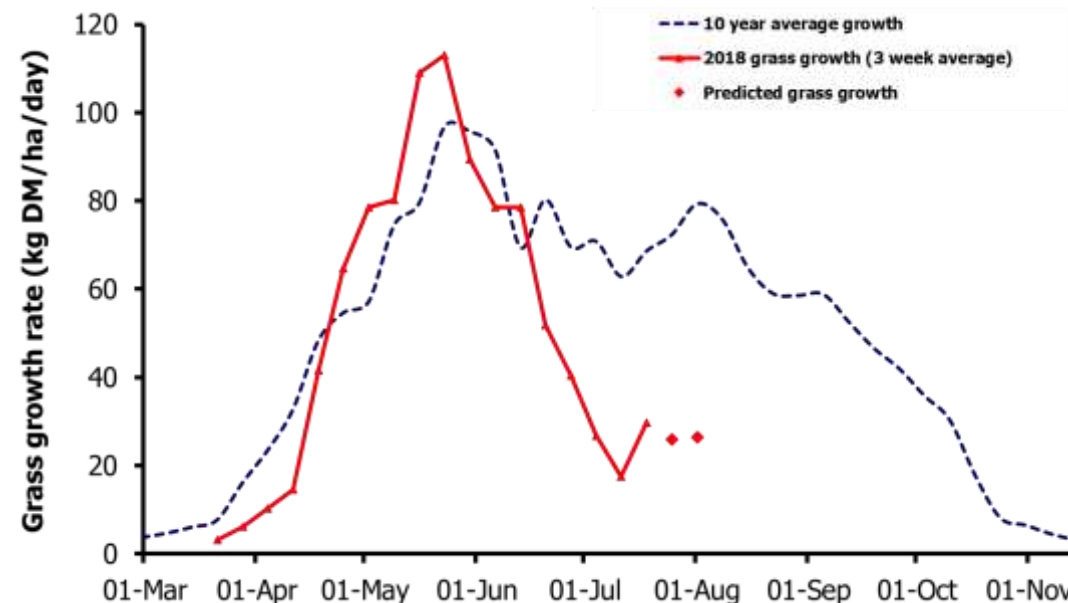
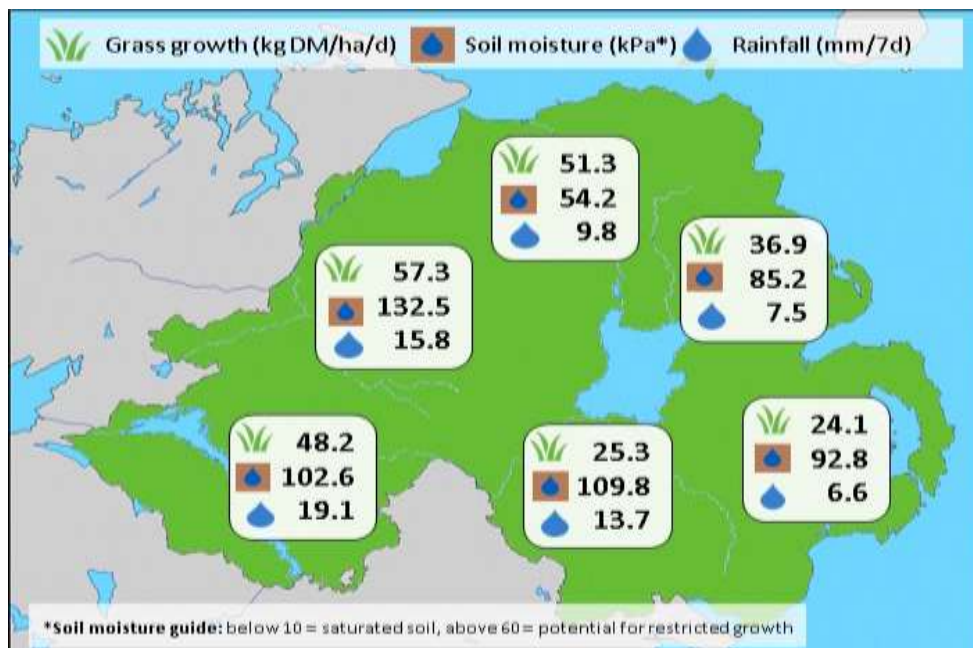


Week Beginning 23 July 2018



MANAGEMENT NOTES:

- With some welcome rainfall this past week, soil moisture levels have risen and growth rates have recovered somewhat particularly in the west of the province. Growth rates are set to improve slightly but will remain well below the seasonal average in eastern counties.
- Grass protein levels have risen considerably this week, with soil nitrogen stores being released to the plant in the presence of more moisture. However, grass ME values remain low, which should be taken into account when devising feed plans.
- With rainfall forecast consider applying fertiliser to support good growth in the next month and boost winter forage stores. Winter feed budgets should also be calculated.

Weekly Grass Growth (kg DM/ha/day)		Grass Quality		
		Plots	On-farm	
GrassCheck plots	29.7	DM (%)	23.2 / 23.5	
Dairy farms*	44.9	ME (MJ/kg DM)	11.3 / 10.8	
Beef & sheep farms*	40.6	CP (% DM)	21.8 / 17.6	
Forecast	7 day	25.9	WSC (% DM)	10.3 / 11.2
	14 day	26.5		

*On-farm grass growth data supplied by AgriNet

GrassCheck plots receive 270 kgN/ha/year

