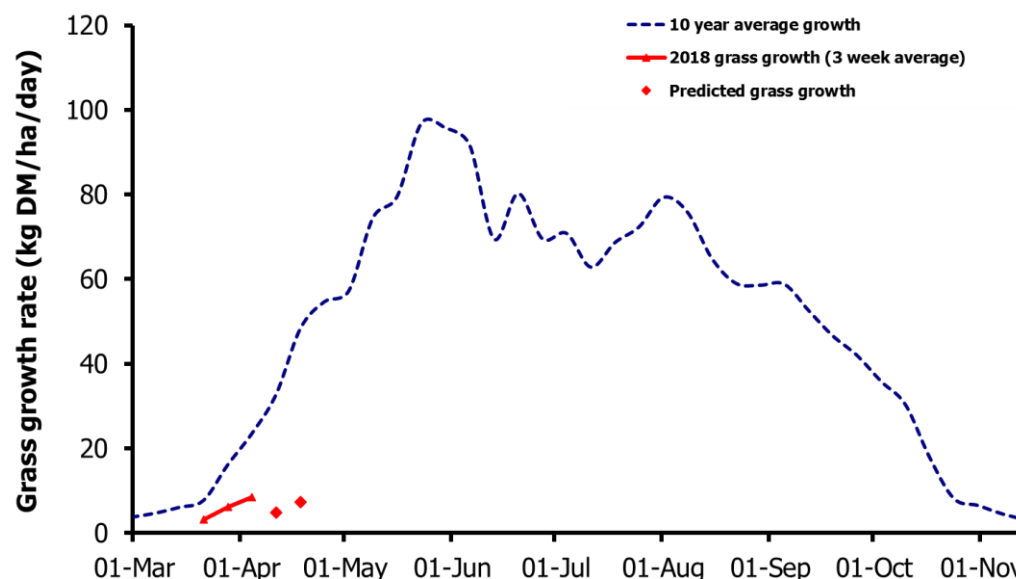
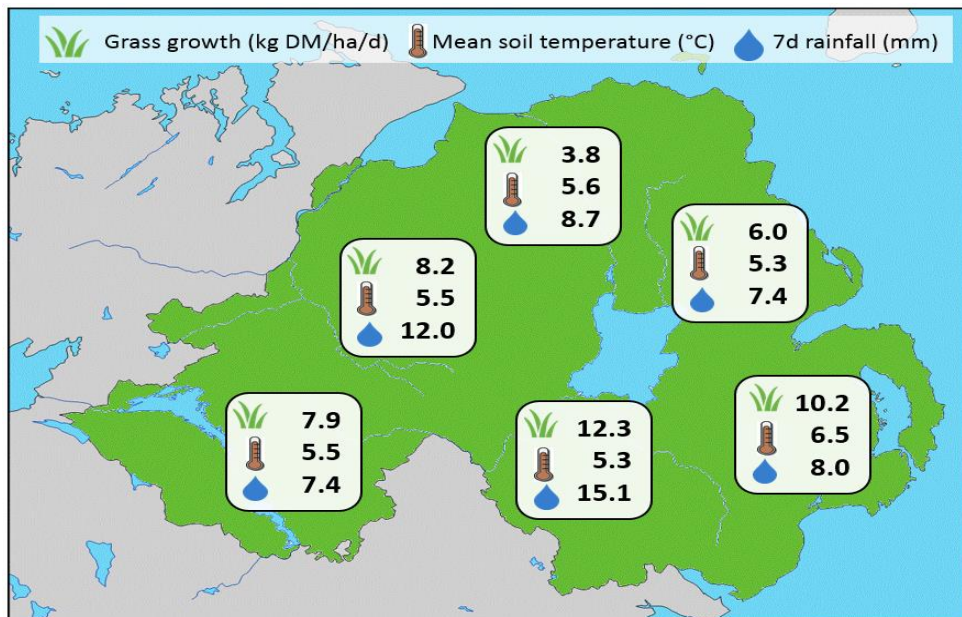


## Week Beginning 2 April 2018



### MANAGEMENT NOTES:

- Although average soil temperatures have risen 1.1°C in the past week, in most places they remain just below 6°C, the temperature required to stimulate grass growth. Grass covers on-farm remain low at 1977kg DM/ha which will slow grass response to any rise in temperature.
- Growth over the next two weeks is expected to remain significantly below expected for the time of year. Review forage budgets for coming weeks.
- Where grass is available, quality is excellent and opportunities should be taken to graze off winter covers and apply fertiliser to stimulate new growth.
- For the latest grass and weather info visit [agrisearch.org/GrassCheck](http://agrisearch.org/GrassCheck)

Weekly Grass Growth		(kg DM/ha/day)
GrassCheck plots		8.4
Dairy farms*		8.2
Beef & sheep farms*		9.1
Forecast	7 day	4.9
	14 day	7.3

	Grass Quality	
	Plots	On-farm
DM (%)	23.0	23.9
ME (MJ/kg DM)	12.5	12.3
CP (% DM)	22.7	19.1
WSC (% DM)	16.5	18.4

\*On-farm grass growth data supplied by AgriNet

# GrassCheck plots receive 270 kgN/ha/year

