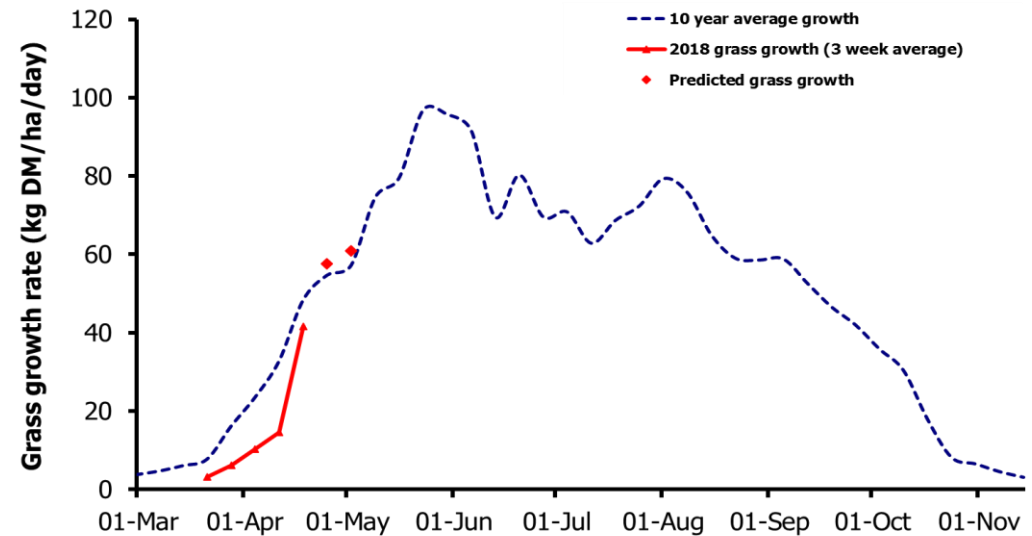
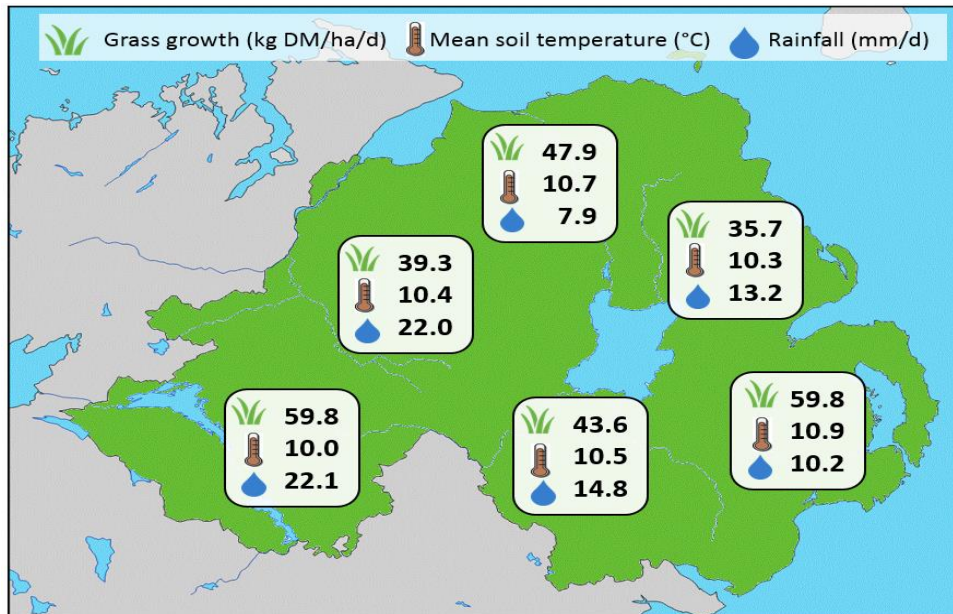


## Week Beginning 23 April 2018



### MANAGEMENT NOTES:

- Following a late start to the season, grass growth has returned to seasonal norms, averaging 51.1kg DM/ha across the GrassCheck farms.
- Most farms have managed to apply fertiliser and manure over this past week and grass has responded well. As a result of the good growth, farm covers are rising quickly across both dairy and beef, averaging 2,475kg DM/ha.
- With growth expected to continue to rise sharply it is important to get on top of grass covers by getting stock out where grazing is possible.
- Where covers are getting in excess of 3,000 kg DM/ha consider earmarking areas of the rotation for early silage.
- For the latest grass and weather info visit [agrisearch.org/GrassCheck](http://agrisearch.org/GrassCheck)

Weekly Grass Growth (kg DM/ha/day)		
GrassCheck plots	41.6	
Dairy farms*	54.4	
Beef & sheep farms*	47.1	
Forecast	7 day	57.6
	14 day	60.9

	Grass Quality	
	Plots	On-farm
DM (%)	16.8	21.8
ME (MJ/kg DM)	12.0	12.4
CP (% DM)	19.0	20.9
WSC (% DM)	16.1	16.4

\*On-farm grass growth data supplied by AgriNet

# GrassCheck plots receive 270 kgN/ha/year

