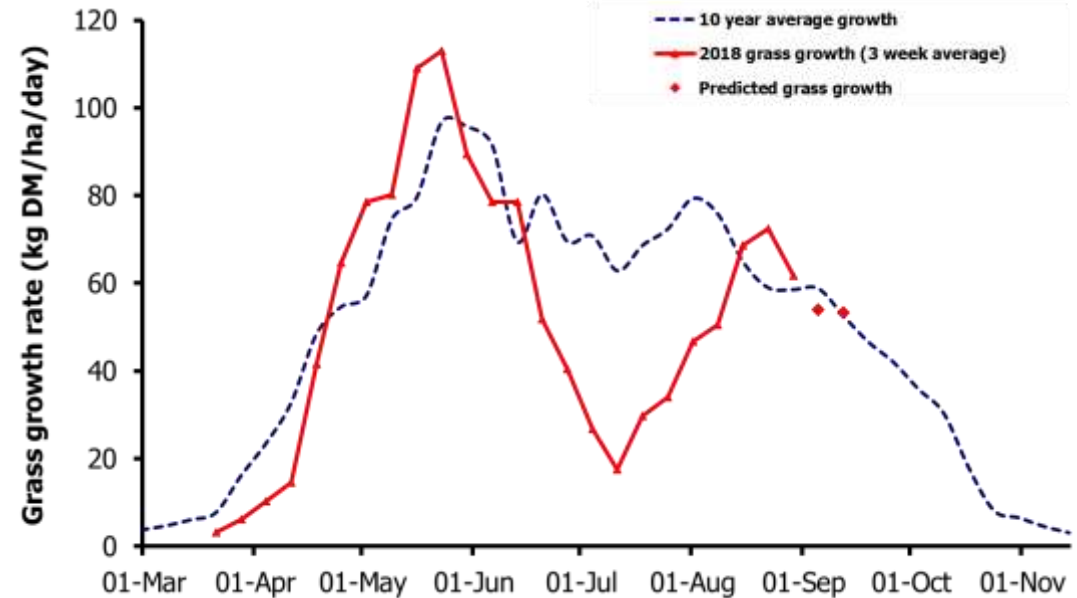
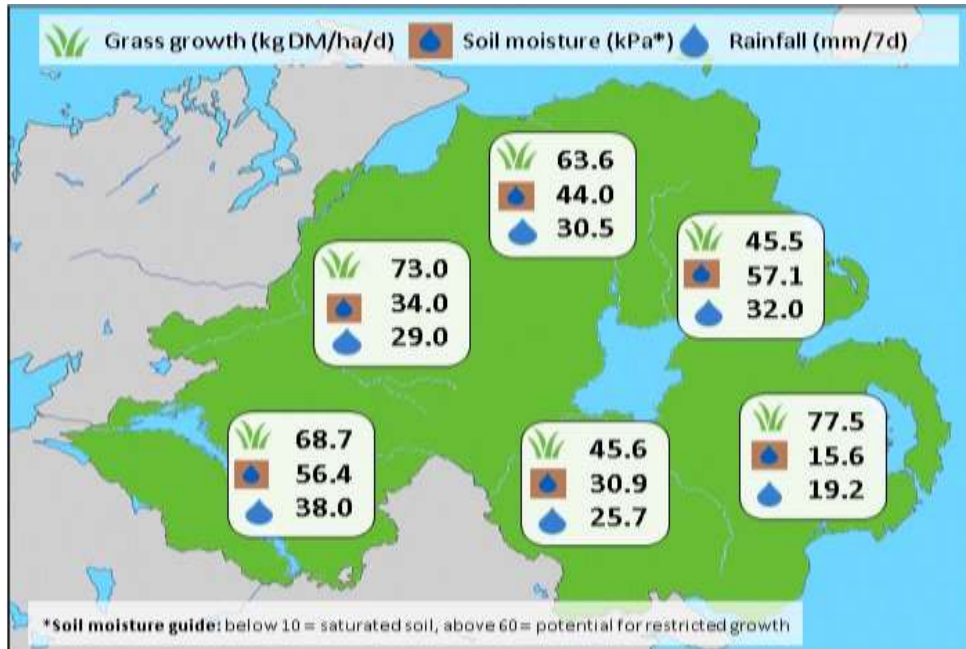


Week Beginning 27 August 2018



Weekly Grass Growth (kg DM/ha/day)		Grass Quality	
		Plots	On-farm
GrassCheck plots	61.8	DM (%)	15.4
Dairy farms*	73.6	ME (MJ/kg DM)	10.7
Beef & sheep farms*	66.2	CP (% DM)	19.8
Forecast	7 day	54.0	WSC (% DM)
	14 day	53.3	9.6
			8.6

MANAGEMENT NOTES:

- Growth rates have remained strong this week due to warm conditions however as cooler temperatures arrive growth is expected to fall in the coming fortnight.
- Warm soil temperatures and lower growth rates during the summer months have led to high levels of soil nitrogen, increasing grass nitrogen levels. Ensure third cut grasses are tested for nitrate content before ensiling to avoid poor fermentation and loss of silage quality.
- Some areas have received heavy rainfall in the past week increasing soil moisture contents. Ensure good access points for grazing. Reseed are particularly prone to damage in wet conditions so monitor closely and remove stock at the first signs of damage to the soil.

*On-farm grass growth data supplied by AgriNet

GrassCheck plots receive 270 kgN/ha/year

