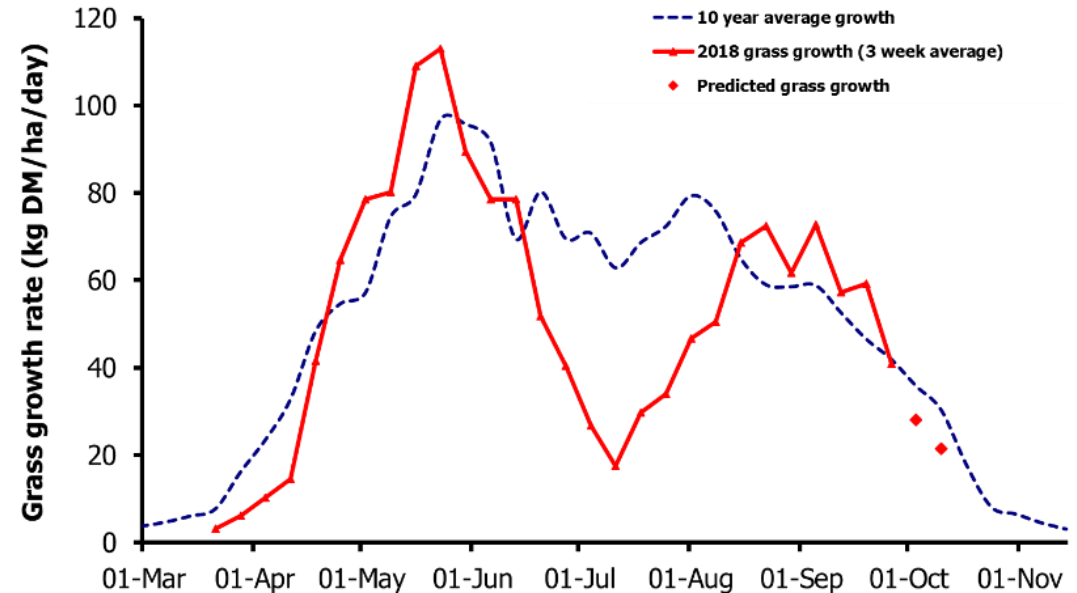
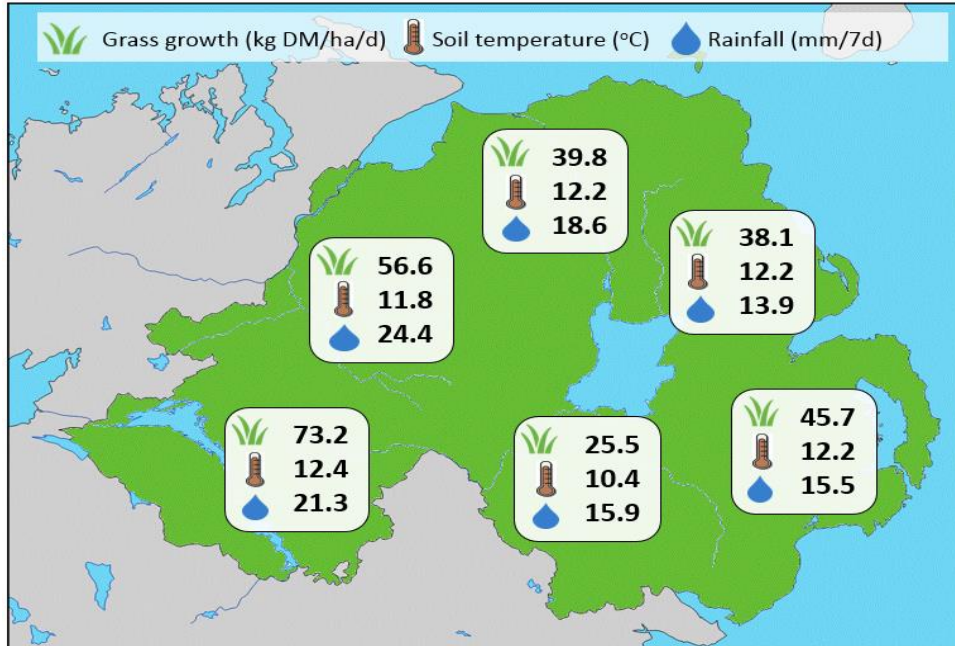


Week Beginning 24 September 2018



Weekly Grass Growth (kg DM/ha/day)		Grass Quality	
		Plots	On-farm
GrassCheck plots	41.0	DM (%)	15.1
Dairy farms*	53.8	ME (MJ/kg DM)	11.1
Beef & sheep farms*	43.6	CP (% DM)	21.5
Forecast	7 day	28.1	WSC (% DM)
	14 day	21.5	9.7
			10.5

MANAGEMENT NOTES:

- A significant temperature drop this week has reduced grass growth on the GrassCheck plots to the average for this time of year. On-farm growth rates remain higher where rotations are being extended and average farm cover is greater. Nonetheless, growth is expected to continue to decline substantially over the next two weeks.
- With many farms entering the last round of grazing, target drier fields first, aiming to get these well grazed out, to ensure quality grass for an early spring bite.

*On-farm grass growth data supplied by AgriNet

GrassCheck plots receive 270 kgN/ha/year

