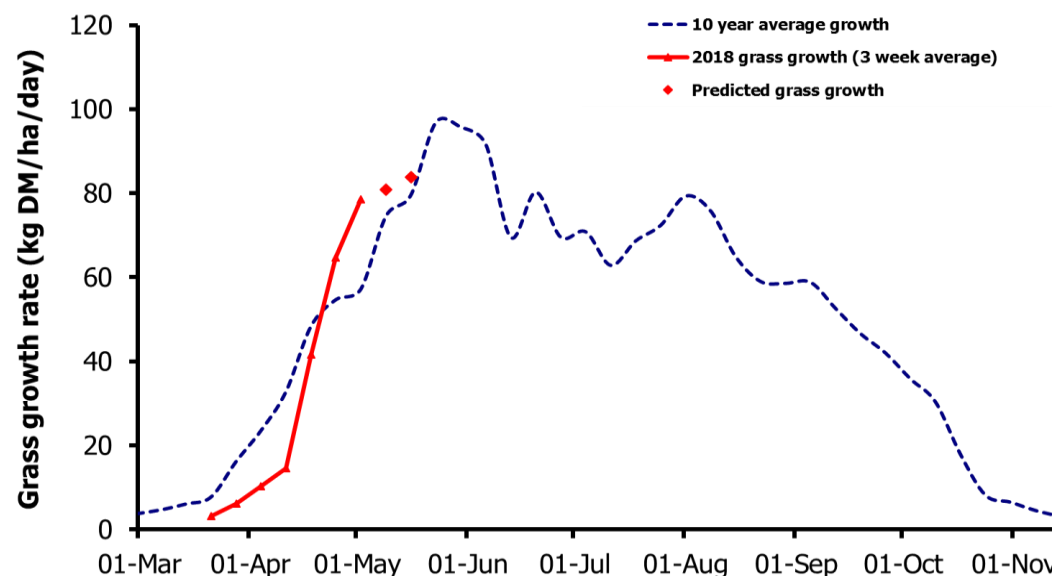
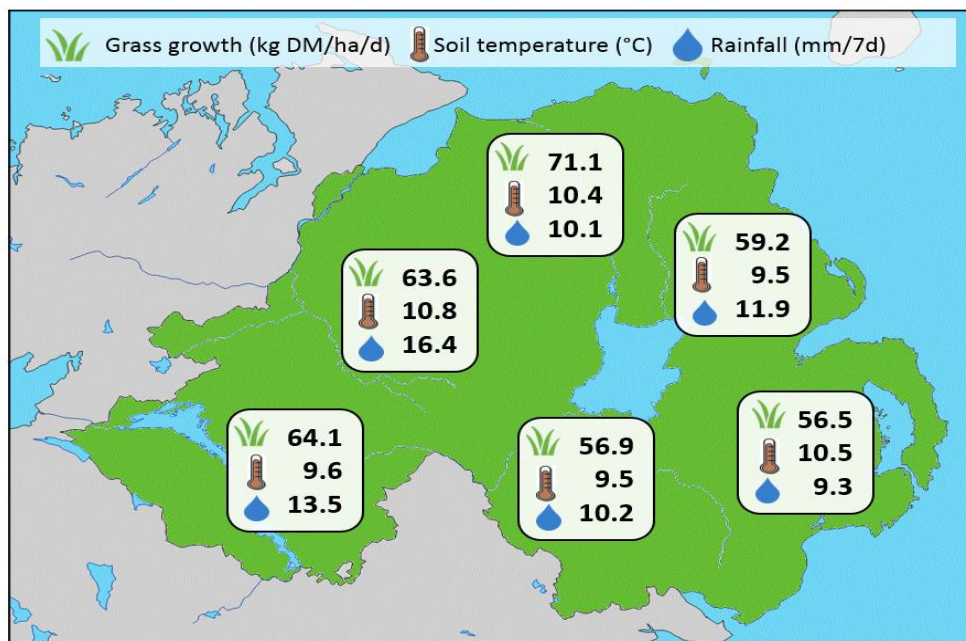


Week Beginning 7 May 2018



MANAGEMENT NOTES:

- Good growth during the last 2 weeks of April led to a total monthly yield of 1.28t DM/ha, only marginally behind the long-term average of 1.33t DM/ha.
- This past week growth on farm is close to the seasonal average however growth on sheep farms was significantly lower than dairy or beef, averaging 37.8kg DM/ha/day.
- First cut silage has begun for some farms. Ensilability analysis is showing good sugar contents but a wide range in nitrate concentrations, with high levels where fertiliser has been applied later than normal. Testing samples before cutting will be essential to ensure good quality first cuts.
- For the latest grass and weather info visit agrisearch.org/GrassCheck

Weekly Grass Growth (kg DM/ha/day)		
GrassCheck plots	78.5	
Dairy farms*	69.9	
Beef & sheep farms*	53.1	
Forecast	7 day	80.9
	14 day	83.8

	Grass Quality	
	Plots	On-farm
DM (%)	14.5	18.1
ME (MJ/kg DM)	11.8	12.4
CP (% DM)	19.2	17.3
WSC (% DM)	13.8	18.4

*On-farm grass growth data supplied by AgriNet

GrassCheck plots receive 270 kgN/ha/year

