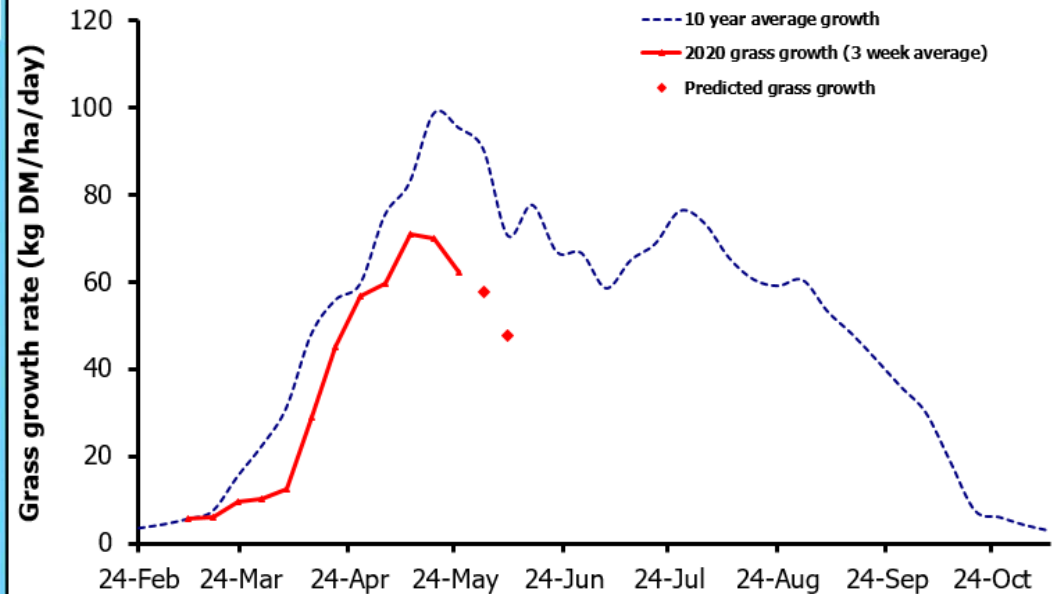
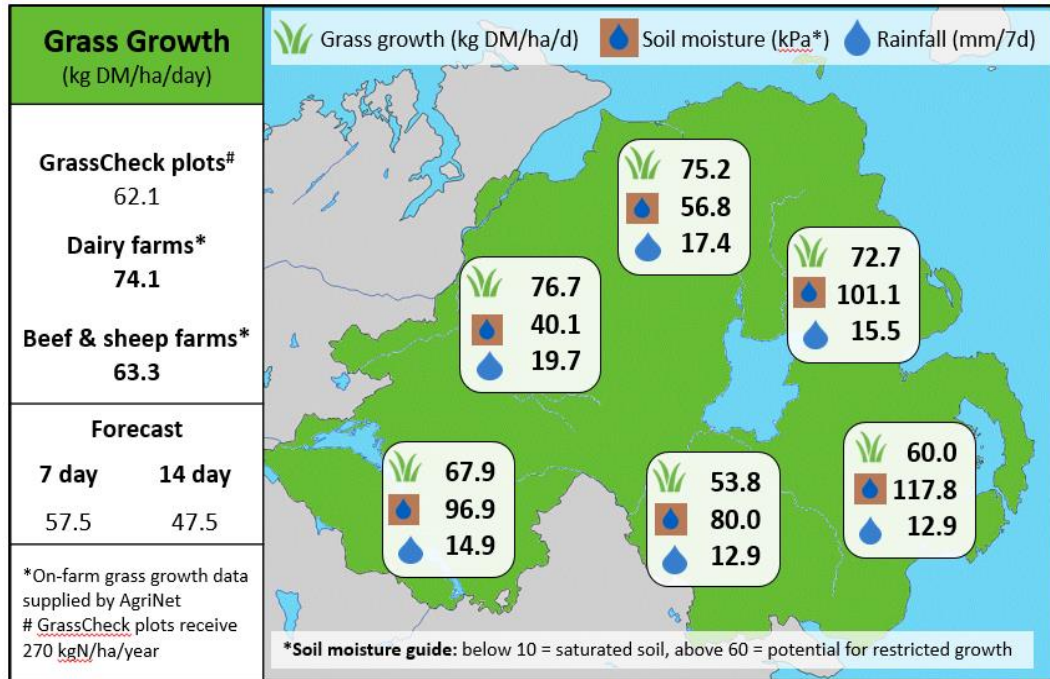


## Week Beginning 25<sup>th</sup> May 2020



### MANAGEMENT NOTES:

- The exceptionally high winds last week caused higher water loss from soils via evapotranspiration, meaning that despite some positive impact from the recent rainfall, soil moisture readings have remained high (dry) this week.
- Average grass growth on farms rose by 13.2 kg DM/ha/d over the past 7 days, boosted by the rain, but without more substantial rainfall to counteract the current soil moisture deficit, growth rates are forecast to decline over the next 14 days. This will particularly impact the east, where soils are already very dry.
- With growth staying well below average at the moment, heavily stocked farms could look to reduce their grass demand by selling on stock where possible.

Value of Grass		Grass Quality	
Dairy – maintenance plus (M+) (kg/cow/day)*	20.6	DM (%)	20.3
Growing animals – daily live weight gain (kg/head/day)**	1.02	ME (MJ/kg DM)	11.5
*M+ calculated assuming: 650kg cow, Maintenance=75 MJ/day, 5.3 MJ/kg and 16 kg DMI **Beef daily gain assuming: 300 kg beef steer, Maintenance=35 MJ/day, 40 MJ/kg gain, and 6.6 kg DMI		CP (% DM)	18.0
		WSC (% DM)	14.9