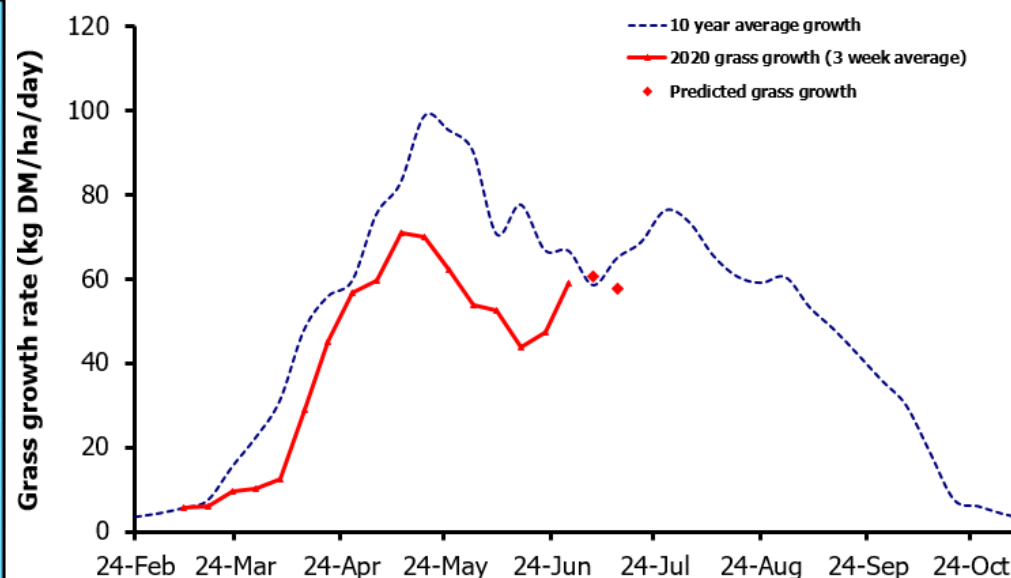
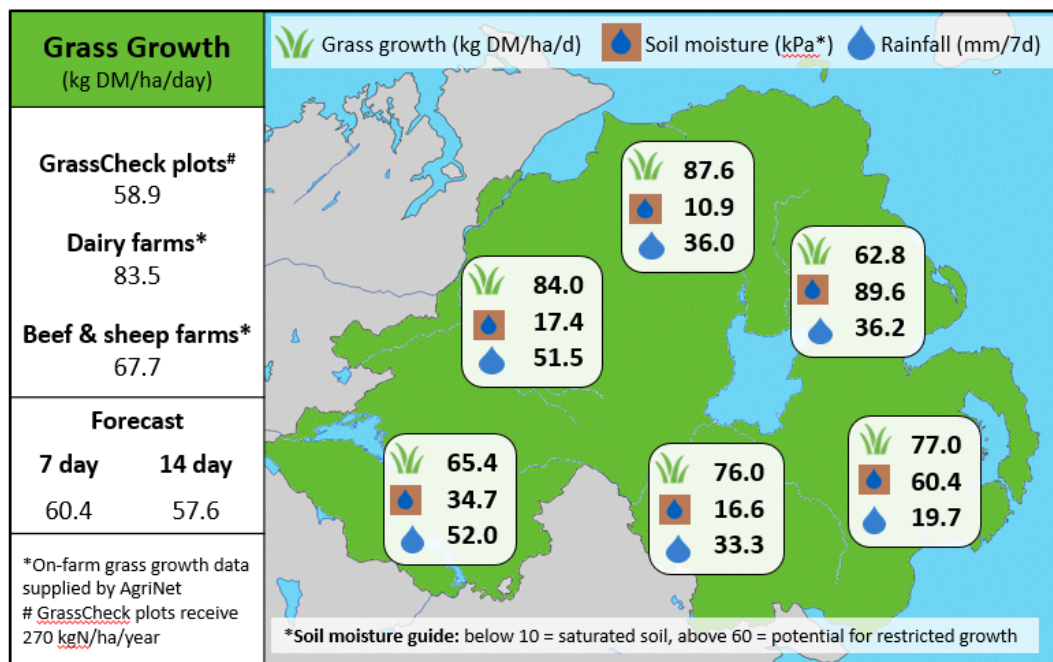


Week Beginning 29th June 2020



MANAGEMENT NOTES:

- Growth on GrassCheck farms is averaging 76 kg DM/ha/d, this week, with growth on the GrassCheck plots notably lower at 59 kg. Growth is forecast to remain steady around 60 kg on the GrassCheck plots over the next 14 days.
- After a week of quite heavy rainfall some farms in the western counties are facing wet grazing conditions once again. On Average farms in Tyrone and Fermanagh have recorded > 50 mm of rainfall in the past 7 days.
- In wetter areas grass DM values are likely to fall, so intakes, and consequently ADG and M+ from grass, may be lower than indicated. Some additional supplementation may be needed to maintain productivity where this occurs.

Value of Grass		Grass Quality	
Dairy – maintenance plus (M+) (kg/cow/day)*	17.3	DM (%)	15.3
Growing animals – daily live weight gain (kg/head/day)**	0.96	ME (MJ/kg DM)	11.1
<small>*M+ calculated assuming: 650kg cow, Maintenance=75 MJ/day, 5.3 MJ/kg and 15 kg DMI **Beef daily gain assuming: 300 kg beef steer, Maintenance=35 MJ/day, 40 MJ/kg gain, and 6.6 kg DMI</small>		CP (% DM)	19.3
		WSC (% DM)	10.2