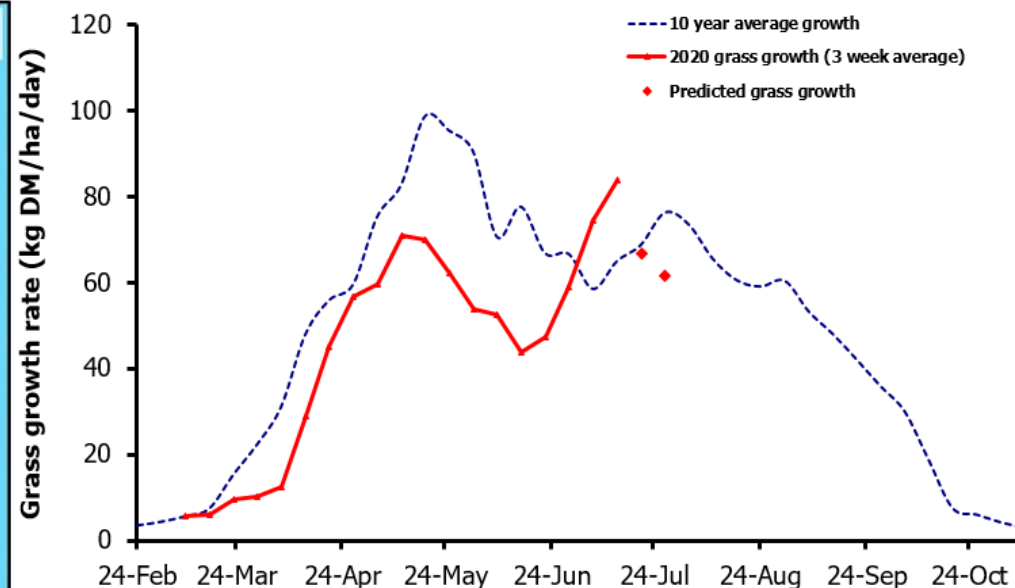
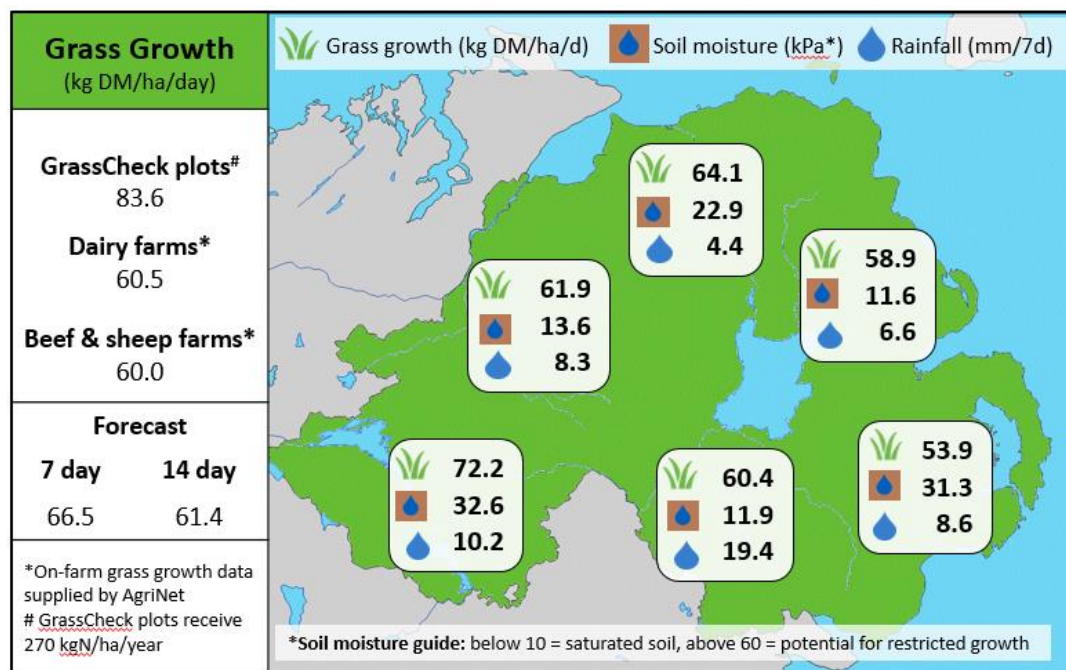


Week Beginning 13th July 2020



MANAGEMENT NOTES:

- Growth rates on the GrassCheck plot sites continue to be very different, impacted by the variation in weather conditions between each location. Grass growth at Hillsborough was 62.4 kg DM/ha/d this week, but Greenmount saw much higher growth rates, averaging 104.8 kg DM/ha/d.
- Average farm growth rates are also variable between counties at present, ranging from 53.9-72.2kg DM/ha/d, with an overall average of 60.3 kg.
- With largely dry conditions forecast many farms will be taking second-cut silage soon. Where high growth rates have generated a grass surplus, take off extra round bales if possible and avoid grazing heavy covers where poor grass utilisation is more likely. Target pre-grazing covers of 2800-3200 kg DM/ha.

Value of Grass		Grass Quality	
Dairy – maintenance plus (M+) (kg/cow/day)*	17.0	DM (%)	15.4
Growing animals – daily live weight gain (kg/head/day)**	1.01	ME (MJ/kg DM)	11.4
*M+ calculated assuming: 650kg cow, Maintenance=75 MJ/day, 5.3 MJ/kg and 14.5 kg DMI		CP (% DM)	18.4
**Beef daily gain assuming: 300 kg beef steer, Maintenance=35 MJ/day, 40 MJ/kg gain, and 6.6 kg DMI		WSC (% DM)	12.1