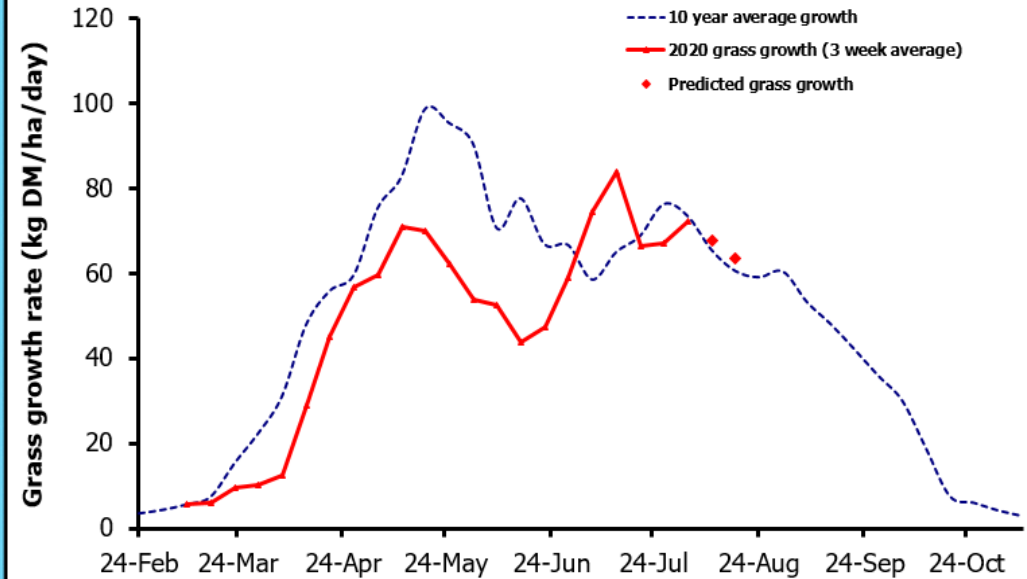
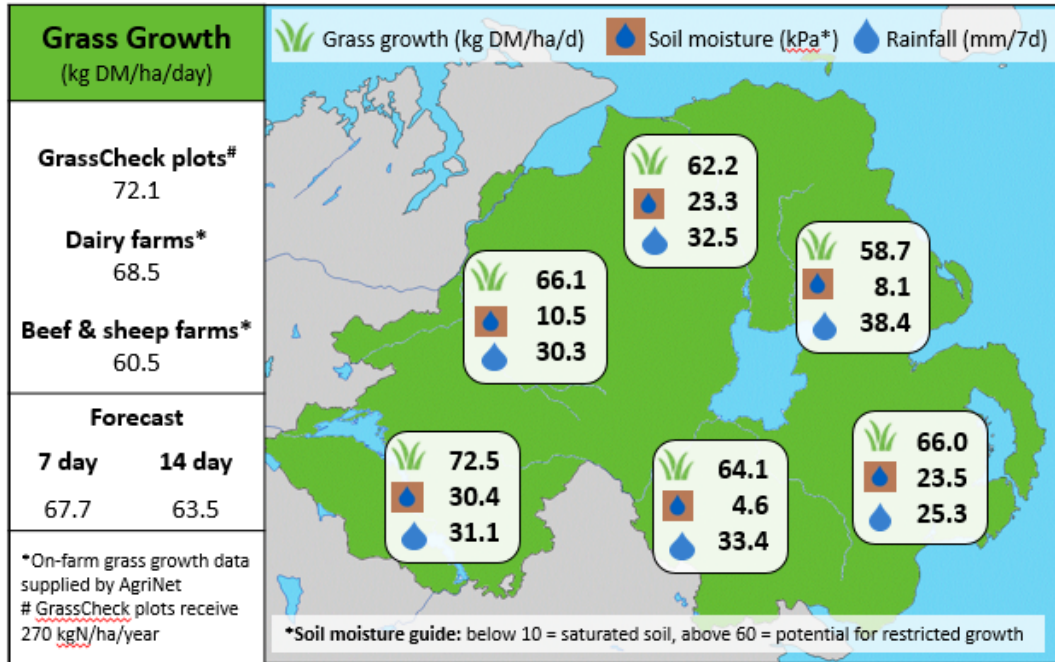


Week Beginning 3rd August 2020



MANAGEMENT NOTES:

- Grass DM production through July was 1.9 t DM/ha on GrassCheck farms, and 2.0 t DM/ha on the GrassCheck plots, comparable to the long term July average of 1.9 t. Total yields to-date remain below average at 7.5 t and 6.9 t on farms and plots respectively, vs the long-term yield of 8.6 t DM/ha.
- The average recorded rainfall last week was >30 mm, with the wet weather driving down grass DM% and creating some very wet ground conditions.
- Spring-calved suckler cows should have passed peak lactation, so it is increasingly important to ensure calves have access to high quality grass to maximise performance. Creep grazing calves ahead of cows can facilitate this.

Value of Grass		Grass Quality	
Dairy – maintenance plus (M+) (kg/cow/day)*	14.9	DM (%)	14.9
Growing animals – daily live weight gain (kg/head/day)**	1.01	ME (MJ/kg DM)	11.4
*M+ calculated assuming: 650kg cow, Maintenance=75 MJ/day, 5.3 MJ/kg and 13.5 kg DMI		CP (% DM)	20.7
**Beef daily gain assuming: 300 kg beef steer, Maintenance=35 MJ/day, 40 MJ/kg gain, and 6.6 kg DMI		WSC (% DM)	10.2