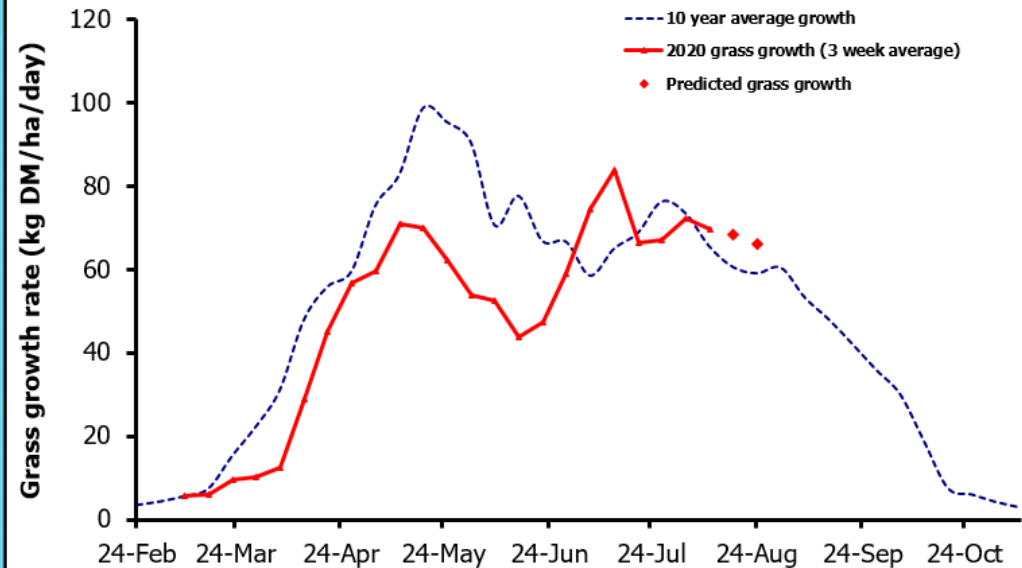
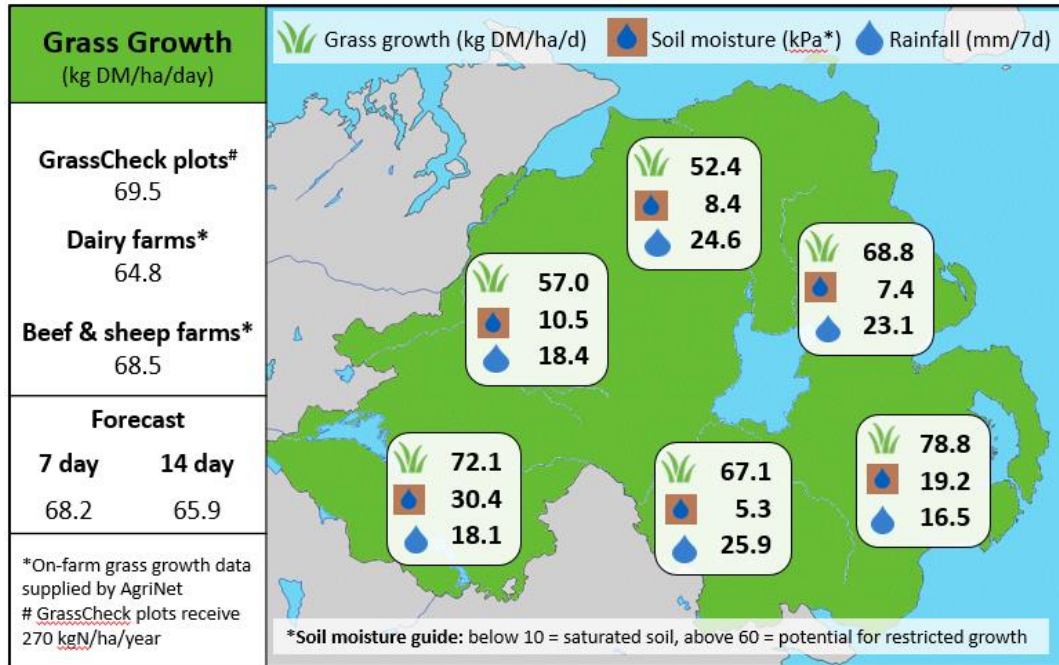


Week Beginning 10th August 2020



MANAGEMENT NOTES:

- Growth on the GrassCheck plots remains just above average for mid-August, at 69.5 kg DM/ha/d compared to the long-term average of 65.3 kg DM/ha/d
- Soil sensors on GrassCheck farms are showing some saturated ground conditions (readings <10 cb) in the west of the province after the past few weeks with heavy rainfall, and grass growth rates are lower here at present; averaging 52.4 and 57.0 kg DM/ha/d in Derry and Tyrone respectively.
- Grass ME and DM% have declined this week, likely linked to the recent wet weather, and target post grazing residuals not being achieved in the wet conditions. When ground conditions improve aim to achieve clean post-grazing residuals to improve quality for the remainder of the season.

Value of Grass		Grass Quality	
Dairy – maintenance plus (M+) (kg/cow/day)*	14.4	DM (%)	14.7
Growing animals – daily live weight gain (kg/head/day)**	0.97	ME (MJ/kg DM)	11.2
*M+ calculated assuming: 650kg cow, Maintenance=75 MJ/day, 5.3 MJ/kg and 13.5 kg DMI		CP (% DM)	17.6
**Beef daily gain assuming: 300 kg beef steer, Maintenance=35 MJ/day, 40 MJ/kg gain, and 6.6 kg DMI		WSC (% DM)	11.5